

Product datasheet for **RG203821**

C1QB (NM_000491) Human Tagged ORF Clone

Product data:

Product Type: Expression Plasmids
Product Name: C1QB (NM_000491) Human Tagged ORF Clone
Tag: TurboGFP
Symbol: C1QB
Mammalian Cell Selection: Neomycin
Vector: pCMV6-AC-GFP (PS100010)
E. coli Selection: Ampicillin (100 ug/mL)
ORF Nucleotide Sequence: >RG203821 representing NM_000491
 Red=Cloning site Blue=ORF Green=Tags(s)

TTTTGTAATACGACTCACTATAGGGCGGCCGGGAATTCGTCGACTGGATCCGGTACCGAGGAGATCTGCC
 GCC**CGATCGCC**

ATGATGATGAAGATCCCATGGGGCAGCATCCCAGTACTGATGTTGCTCCTGCTCCTGGGCCTAATCGATA
 TCTCCCAGGCCAGCTCAGCTGCACCGGGCCCCAGCCATCCCTGGCATCCCGGGTATCCCTGGGACACC
 TGGCCCCGATGGCCAACCTGGGACCCAGGGATAAAAGGAGAGAAAGGGCTTCCAGGGCTGGCTGGAGAC
 CATGGTGAATTCGGAGAGAAGGGAGACCCAGGGATTCTGGGAATCCAGGAAAAGTCCGGCCCCAAGGGCC
 CCATGGGCCCTAAAGGTGGCCAGGGGCCCTGGAGCCCCAGGCCCAAGGTGAATCGGGAGACTACAA
 GGCCACCCAGAAAATCGCTTCTCTGCCACAAGAACCATCAACGTCCTCCCTGCGCCGGGACCAGACCATC
 CGTTCGACCACGTGATCACCAACATGAACAACAATTATGAGCCCGCAGTGGCAAGTTCACCTGCAAGG
 TGCCCGGTCTCTACTACTTACCTACCACGCCAGCTCTCGAGGGAACCTGTGCGTGAACCTCATGCGTGG
 CCGGGAGCGTGACAGAAAGGTGGTACCTTCTGTGACTATGCCTACAACACCTTCCAGGTACCACCGGT
 GGCATGGTCTCAAGCTGGAGCAGGGGAGAACGTTCTCCTGCAGGCCACCGACAAGAACTCACTACTGG
 GCATGGAGGGTGCCAACAGCATCTTTCCGGGTTCTGCTCTTCCAGATATGGAGGCC

ACGCGTACGCGGCCGCTCGAG - GFP Tag - GTTTAA

Protein Sequence: >RG203821 representing NM_000491
 Red=Cloning site Green=Tags(s)

MMMKIPWGSIPVLMLLLLLGLIDISQAQLSCTGPPAIPGIPGIPGTPGPDGQPGTPIKGEKPLPGLAGD
 HGEFGEKGDPIGNPGKVGPKGPMGPKGGPGAPGAPGPKGESGDYKATQKIAFSATRTINVPLRRDQTI
 RFDHVITNMNNNYEPRSGKFTCKVPGLYYFTYHASSRGNLCVNLMRGRERAQKVVTFCDYAYNTFQVTTG
 GMVLKLEQGENVFLQATDKNSLLGMEGANSIFSGFLLFPDMEA

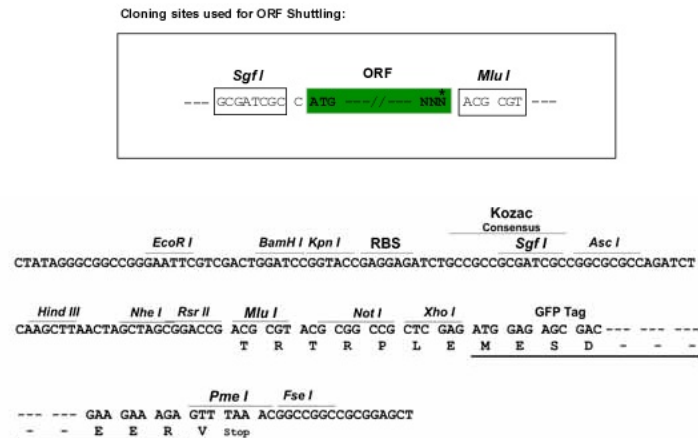
TRTRPLE - GFP Tag - V



[View online »](#)

Restriction Sites: SgfI-MluI

Cloning Scheme:



ACCN: NM_000491

ORF Size: 759 bp

OTI Disclaimer: The molecular sequence of this clone aligns with the gene accession number as a point of reference only. However, individual transcript sequences of the same gene can differ through naturally occurring variations (e.g. polymorphisms), each with its own valid existence. This clone is substantially in agreement with the reference, but a complete review of all prevailing variants is recommended prior to use. [More info](#)

OTI Annotation: This clone was engineered to express the complete ORF with an expression tag. Expression varies depending on the nature of the gene.

Components: The ORF clone is ion-exchange column purified and shipped in a 2D barcoded Matrix tube containing 10ug of transfection-ready, dried plasmid DNA (reconstitute with 100 ul of water).

Reconstitution Method:

1. Centrifuge at 5,000xg for 5min.
2. Carefully open the tube and add 100ul of sterile water to dissolve the DNA.
3. Close the tube and incubate for 10 minutes at room temperature.
4. Briefly vortex the tube and then do a quick spin (less than 5000xg) to concentrate the liquid at the bottom.
5. Store the suspended plasmid at -20°C. The DNA is stable for at least one year from date of shipping when stored at -20°C.

RefSeq: [NM_000491.5](#)

RefSeq Size: 1044 bp

RefSeq ORF: 762 bp

Locus ID: 713

UniProt ID: [P02746](#)

Cytogenetics: 1p36.12

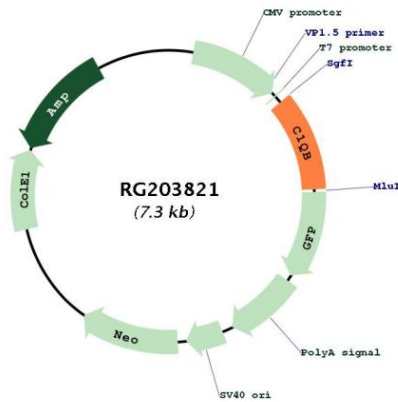
Domains: C1Q, Collagen

Protein Families: Secreted Protein

Protein Pathways: Complement and coagulation cascades, Prion diseases, Systemic lupus erythematosus

Gene Summary: This gene encodes the B-chain polypeptide of serum complement subcomponent C1q, which associates with C1r and C1s to yield the first component of the serum complement system. C1q is composed of 18 polypeptide chains which include 6 A-chains, 6 B-chains, and 6 C-chains. Each chain contains an N-terminal collagen-like region and a C-terminal C1q globular domain. C1q deficiency is associated with lupus erythematosus and glomerulonephritis. [provided by RefSeq, Dec 2016]

Product images:



Circular map for RG203821