

## Product datasheet for **RG203819**

### CD14 (NM\_000591) Human Tagged ORF Clone

#### Product data:

Product Type:	Expression Plasmids
Product Name:	CD14 (NM_000591) Human Tagged ORF Clone
Tag:	TurboGFP
Symbol:	CD14
Mammalian Cell Selection:	Neomycin
Vector:	pCMV6-AC-GFP (PS100010)
E. coli Selection:	Ampicillin (100 ug/mL)
ORF Nucleotide Sequence:	>RG203819 representing NM_000591 Red=Cloning site Blue=ORF Green=Tags(s)

TTTTGTAATACGACTCACTATAGGGCGGCCGGAATTCGTCGACTGGATCCGGTACCGAGGAGATCTGCC  
GCC**CGATCGCC**

ATGGAGCGCGCTCCTGCTTGTGCTGCTGCTGCTGCCGCTGGTGCACGTCTCTGCGACCAGCCAGAAC  
CTTGTGAGCTGGACGATGAAGATTTCCGCTGCGTCTGCAACTTCTCCGAACCTCAGCCCGACTGGTCCGA  
AGCCTTCCAGTGTGTGCTGCAGTAGAGGTGGAGATCCATGCCGGCGGTCTAACCTAGAGCCGTTTCTA  
AAGCGCGTCGATGCGGACGCCGACCCGCGGAGTATGCTGACACGGTCAAGGCTCTCCGCTGCGGCGGC  
TCACAGTGGGAGCCGACAGGTTCTGCTCAGCTACTGGTAGGCGCCCTGCGTGTGCTAGCGTACTCCCG  
CCTCAAGGAAGTACGCTCGAGGACCTAAAGATAACCGGCACCATGCCTCCGCTGCCTCTGGAAGCCACA  
GGACTTGCACTTTCCAGCTTGGCCTACGCAACGTGTCGTGGGCGACAGGGCGTTCTTGGCTCGCCGAGC  
TGCAGCAGTGGCTCAAGCCAGGCCTCAAGGTAAGTACTGAGCATTGCCAAGCACACTCGCCTGCTTTTCTG  
CGAACAGGTTTCGCGCCTTCCCGCCCTTACCAGCCTAGACCTGTCTGACAATCCTGGACTGGGCGAACGC  
GGACTGATGGCGGCTCTCTGTCCCACAAGTCCCGGCCATCCAGAATCTAGCGCTGCGCAACACAGGAA  
TGGAGACGCCACAGGCGTGTGCGCCGACTGGCGGCGGAGGTGTCAGCCCCACAGCCTAGACCTCAG  
CCACAACCTGCTGCGCGCCACCCTAAACCCTAGCGCTCCGAGATGCATGTGGTCCAGCGCCCTGAACCTC  
CTCAATCTGTCGTTGCTGGGCTGGAACAGGTGCCTAAAGGACTGCCAGCCAAGCTCAGAGTGTCTGATC  
TCAGCTGCAACAGACTGAACAGGCGCCGAGCCTGACGAGCTGCCCGAGGTGGATAACCTGACACTGGA  
CGGAATCCCTTCTGTTCCCTGGAAGTCCCTCCCGACGAGGCTCAATGAACTCCGCGGTGGTCCCA  
GCCTGTGCACGTTTCGACCTGTCCGGTGGGGTGTCCGGAACCCTGGTGTCTCCAAGGGGCCCGGGGCT  
TTGCC

**ACGCGT**ACGCGGCCGCTCGAG - GFP Tag - GTTTAA



[View online »](#)

**Protein Sequence:** >RG203819 representing NM\_000591  
Red=Cloning site Green=Tags(s)

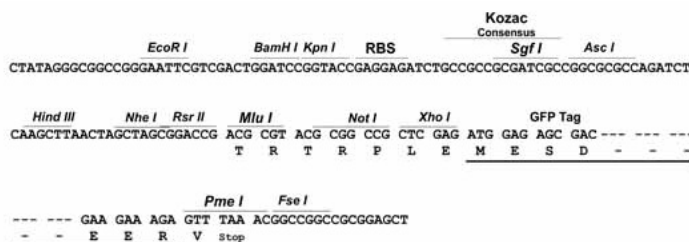
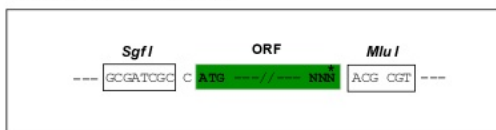
```
MERASCLLLLLLPLVHVSATTPEPCELDEDFRCVCFNFSEPQPDWSEAFQCVSAVEVEIHAGGLNLEPFL
KRVADADPRQYADTVKALRVRRLLTVGAAQVPAQLLVGALRVLAYSRLKELTLEDLKITGTMPPLEAT
GLALSSLRLRNVSATGRSWLAELQWLKPKLVLSIAQAHSPAFSCEQVRAFPAALTSLDLSDNPLGER
GLMAALCPHKFPAIQNLALRNTGMETPTGVCAALAAAGVQPHSLDLSHNSLRATVNPSAPRCMWSSALNS
LNL SFAGLEQVPKGLPAKLRLVLDLSCNRLNRAPQPEDELPEVDNLTL DGNPFLVPGTALPHEGSMNSGVVP
ACARSTLSVGSGLVLLQGARGFA
```

TRTRPLE - GFP Tag - V

**Restriction Sites:** SgfI-MluI

**Cloning Scheme:**

Cloning sites used for ORF Shuttling:



**ACCN:** NM\_000591

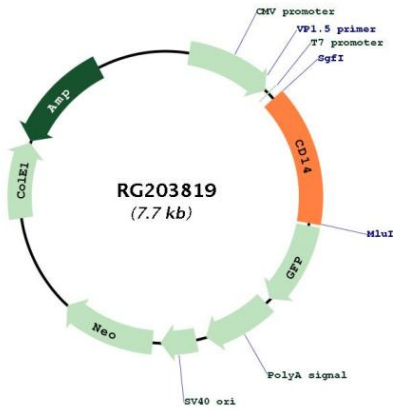
**ORF Size:** 1125 bp

**OTI Disclaimer:** Due to the inherent nature of this plasmid, standard methods to replicate additional amounts of DNA in *E. coli* are highly likely to result in mutations and/or rearrangements. Therefore, OriGene does not guarantee the capability to replicate this plasmid DNA. Additional amounts of DNA can be purchased from OriGene with batch-specific, full-sequence verification at a reduced cost. Please contact our customer care team at [custsupport@origene.com](mailto:custsupport@origene.com) or by calling 301.340.3188 option 3 for pricing and delivery.

The molecular sequence of this clone aligns with the gene accession number as a point of reference only. However, individual transcript sequences of the same gene can differ through naturally occurring variations (e.g. polymorphisms), each with its own valid existence. This clone is substantially in agreement with the reference, but a complete review of all prevailing variants is recommended prior to use. [More info](#)

<b>OTI Annotation:</b>	This clone was engineered to express the complete ORF with an expression tag. Expression varies depending on the nature of the gene.
<b>Components:</b>	The ORF clone is ion-exchange column purified and shipped in a 2D barcoded Matrix tube containing 10ug of transfection-ready, dried plasmid DNA (reconstitute with 100 ul of water).
<b>Reconstitution Method:</b>	<ol style="list-style-type: none"><li>1. Centrifuge at 5,000xg for 5min.</li><li>2. Carefully open the tube and add 100ul of sterile water to dissolve the DNA.</li><li>3. Close the tube and incubate for 10 minutes at room temperature.</li><li>4. Briefly vortex the tube and then do a quick spin (less than 5000xg) to concentrate the liquid at the bottom.</li><li>5. Store the suspended plasmid at -20°C. The DNA is stable for at least one year from date of shipping when stored at -20°C.</li></ol>
<b>RefSeq:</b>	<a href="#">NM_000591.4</a>
<b>RefSeq Size:</b>	1623 bp
<b>RefSeq ORF:</b>	1128 bp
<b>Locus ID:</b>	929
<b>UniProt ID:</b>	<a href="#">P08571</a>
<b>Cytogenetics:</b>	5q31.3
<b>Domains:</b>	LRR
<b>Protein Families:</b>	Adult stem cells, Druggable Genome, Embryonic stem cells, ES Cell Differentiation/IPS, Transmembrane
<b>Protein Pathways:</b>	Hematopoietic cell lineage, MAPK signaling pathway, Pathogenic Escherichia coli infection, Regulation of actin cytoskeleton, Toll-like receptor signaling pathway
<b>Gene Summary:</b>	The protein encoded by this gene is a surface antigen that is preferentially expressed on monocytes/macrophages. It cooperates with other proteins to mediate the innate immune response to bacterial lipopolysaccharide, and to viruses. This gene has been identified as a target candidate in the treatment of SARS-CoV-2-infected patients to potentially lessen or inhibit a severe inflammatory response. Alternative splicing results in multiple transcript variants encoding the same protein. [provided by RefSeq, Aug 2020]

Product images:



Circular map for RG203819