

Product datasheet for **RG203810**

OB Cadherin (CDH11) (NM_001797) Human Tagged ORF Clone

Product data:

Product Type:	Expression Plasmids
Product Name:	OB Cadherin (CDH11) (NM_001797) Human Tagged ORF Clone
Tag:	TurboGFP
Symbol:	OB Cadherin
Synonyms:	CAD11; CDHOB; ESWS; OB; OSF-4
Mammalian Cell Selection:	Neomycin
Vector:	pCMV6-AC-GFP (PS100010)
E. coli Selection:	Ampicillin (100 ug/mL)



[View online »](#)

ORF Nucleotide Sequence:

>RG203810 representing NM_001797
 Red=Cloning site Blue=ORF Green=Tags(s)

TTTTGTAATACGACTCACTATAGGGCGGCCGGAATTCGTCGACTGGATCCGGTACCGAGGAGATCTGCC
 GCC**CGCATCGCC**

ATGAAGGAGAACTACTGTTTACAAGCCGCCTGGTGTGCCTGGGCATGCTGTGCCACAGCCATGCCTTTG
 CCCAGAGCGGGCGGGACCTGCGGCCCTCCTCCATGGGCACCATGAGAAGGGCAAGGAGGGGCAGGT
 GCTACAGCGCTCCAAGCGTGGCTGGGTCTGGAACCAAGTCTTCGTGATAGAGGAGTACACCGGGCCTGAC
 CCCGTGCTTGTGGGCAGGCTTCATTAGATATTGACTCTGGTGTGGAAACATTAATACATTCTCTCAG
 GGAAGGAGCTGGAACATTTTTGTGATTGATGACAAATCAGGGAACATTCATGCCACCAAGACGTTGGA
 TCGAGAAGAGAGAGCCAGTACACGTTGATGGCTCAGGCGGTGGACAGGGACACCAATCGGCCACTGGAG
 CCACCGTCGGAATTCATTGTCAAGGTCCAGGACATTAATGACAACCTCCGGAGTTCCTGCACGAGACCT
 ATCATGCCAACGTGCCTGAGAGGTCATGTGGGAACGTCAGTAATCCAGGTGACAGCTTCAGATGCAGA
 TGACCCCACTTATGGAATAGCGCAAGTTAGTGTACAGTATCCTCGAAGGACAACCTATTTTTCGGTG
 GAAGCACAGACAGGTATCATCAGAACAGCCCTACCCAACATGGACAGGGAGGCCAAGGAGGAGTACCACG
 TGGTGATCCAGGCCAAGGACATGGTGGACATATGGGCGGACTCTCAGGGACAACCAAAGTGATGATCAC
 ACTGACCGATGTCAATGACAACCCACAAAGTTTTCCGAGAGCGTATACCAGATGTCTGTGTGAGAAGCA
 GCCGTCCCTGGGAGGAAGTAGGAAGAGTGAAAGCTAAAGATCCAGACATTGGAGAAAAATGGCTTAGTCA
 CATACAATATTGTTGATGGAGATGGTATGGAAATCATTGAAATCACAAACGGACTATGAAACACAGGAGGG
 GGTGATAAAGCTGAAAAAGCCTGTAGATTTTGAACAAAAGAGCCTATAGCTTGAAGGTAGAGGCGCC
 AACGTGCACATCGACCCGAAGTTTATCAGCAATGGCCCTTCAAGGACACTGTGACCGTCAAGATCGCAG
 TAGAAGATGCTGATGAGCCCCATGTTCTTGGCCCCAAGTTACATCCACGAAGTCCAAGAAAAATGCAG
 TGCTGGCACCGTGGTGGGAGAGTGCATGCCAAAGACCCTGATGCTGCCAACAGCCCGATAAGGTATTCC
 ATCGATCGTCACACTGACCTCGACAGATTTTTACTATTAATCCAGAGGATGGTTTTATTAATAACTACAA
 AACCTCTGGATAGAGAGGAAACAGCCTGGCTCAACATCACTGTCTTTCAGCAGAAAATCCACAATCGGCA
 TCAGGAAGCCAAAGTCCCAGTGGCCATTAGGGTCTTGTGATGCAACGATAATGCTCCCAAGTTTGTGCTCC
 CCTTATGAAGTTTTCATCTGTGAGAGTATCAGACCAAGCCACTTCCAACCAGCCAATTGTTACAATTA
 GTGCAGATGACAAGGATGACACGGCCAATGGACCAAGATTTATCTTCAGCCTACCCCTGAAATCATTCA
 CAATCAAATTTACAGTCAGAGACAACCGAGATAACACAGCAGGCGTGTACGCCCGCGTGGAGGGTTC
 AGTCGGCAGAAGCAGGACTTGTACCTTCTGCCATAGTGATCAGCGATGGCGGCATCCCGCCCATGAGTA
 GCACCAACACCCTCACCATCAAAGTCTGCGGGTGCAGCTGAACGGGGCACTGCTCTCCTGCAACGCAGA
 GGCTACATTCTGAACCGCGCCTGAGCACAGGCGCCCTGATCGCCATCCTCGCCTGCATCGTCATTCTC
 CTGGTCATTGTAGTATTGTTGTGACCCCTGAGAAGGCAAAAGAAAGAACCACTCATTGTCTTTGAGGAAG
 AAGATGTCCTGTGAGAATCATTACTTATGATGATGAAGGGGGTGGGGAAGAAGACAGAAAGCCTTTGA
 TATTGCCACCCTCAGAAATCCTGATGGTATCAATGGATTTATCCCCCGCAAAGACATCAAACCTGAGTAT
 CAGTACATGCCTAGACCTGGGCTCCGGCCAGCGCCCAACAGCGTGGATGTCGATGACTTCATCAACACGA
 GAATACAGGAGGCAGACAATGACCCACGGCTCCTCCTTATGACTCCATTCAAATCTACGGTTATGAAGG
 CAGGGGCTCAGTGGCCGGTCCCTGAGCTCCCTAGAGTCGGCCACCACAGATTGACTTGGACTATGAT
 TATCTACAGAACTGGGGACCTCGTTTTAAGAACTAGCAGATTTGTATGGTTCCAAGACACTTTTGATG
 ACGATTCT

ACGCGTACGCGGCCGCTCGAG - GFP Tag - GTTTAA

Protein Sequence: >RG203810 representing NM_001797
Red=Cloning site Green=Tags(s)

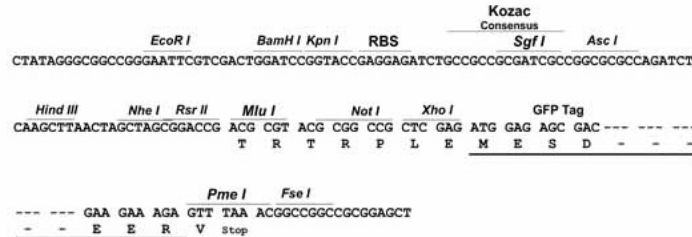
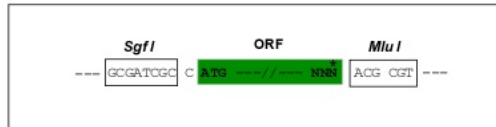
MKENYCLQAALVCLGMLCHSHAFAPERRGHLRPSFHGHHEKGEQVLQRSKRGWVWNQFFVIEEYTGPD
PVLVGRHLHSDIDSGDGNIKYILSGEGAGTIFVIDDKSGNIHATKTLDREERAQYTLMAQAVDRDTNRPLE
PPSEFIVKVQDINDNPPEFLHETYHANVPERSNVGTSVIQVTASDADDPTYGNSAKLVYSILEGQPYFSV
EAQTGIIRTALPNMDREAKEEYHVVIQAKDMGGHMGGLSGTTKVMITLTDVNDNPPKFPQSVYQMSVSEA
AVPGEEVGRVKAKDPDIGENGLVTYNIVDGDMESFEITTDYETQEGVIKLLKPVDFETKRAYSLKVEAA
NVHIDPKFISNGPFKDTVTVKIAVEDADEPPMFLAPSYIHEVQENAAAAGTVVGRVHAKDPAANSPIRYS
IDRHTDLDRFFTINPEDGFIKTTKPLDREETAWLNITVFAAEIHNHRQEAKVPVAIRVLDVNDNAPKFAA
PYEGFICESDQTKPLSNQPIVTISADDKDDTANGPRFIFSLPPEIIHNPNFTVRDNRDNTAGVYARRGGF
SRQKQDLYLLPIVISDGGIPPMSSNTLTIKVCGCDVNGALLSCNAEAYILNAGLSTGAL IAILACIVIL
LVIVVLFVTLRRQKKEPLIVFEEEDVRENIITYDDEGGGEEDTEAFDIATLQNPDGINGFIPRKDIKPEY
QYMPRPGLRPAPNSVDVDDFINTRIQEADNDPTAPPYDSIQIYGYEGRGSVAGSLSSLESATTDSDLDYD
YLQNWGPRFKKLADLYGSKDTFDDDS

TRTRPLE - GFP Tag - V

Restriction Sites: Sgfl-MluI

Cloning Scheme:

Cloning sites used for ORF Shutting:


ACCN: NM_001797

ORF Size: 2388 bp

OTI Disclaimer: The molecular sequence of this clone aligns with the gene accession number as a point of reference only. However, individual transcript sequences of the same gene can differ through naturally occurring variations (e.g. polymorphisms), each with its own valid existence. This clone is substantially in agreement with the reference, but a complete review of all prevailing variants is recommended prior to use. [More info](#)
OTI Annotation: This clone was engineered to express the complete ORF with an expression tag. Expression varies depending on the nature of the gene.

Components: The ORF clone is ion-exchange column purified and shipped in a 2D barcoded Matrix tube containing 10ug of transfection-ready, dried plasmid DNA (reconstitute with 100 ul of water).

Reconstitution Method:

1. Centrifuge at 5,000xg for 5min.
2. Carefully open the tube and add 100ul of sterile water to dissolve the DNA.
3. Close the tube and incubate for 10 minutes at room temperature.
4. Briefly vortex the tube and then do a quick spin (less than 5000xg) to concentrate the liquid at the bottom.
5. Store the suspended plasmid at -20°C. The DNA is stable for at least one year from date of shipping when stored at -20°C.

RefSeq: [NM_001797.2](#), [NP_001788.2](#)

RefSeq Size: 3654 bp

RefSeq ORF: 2391 bp

Locus ID: 1009

UniProt ID: [P55287](#)

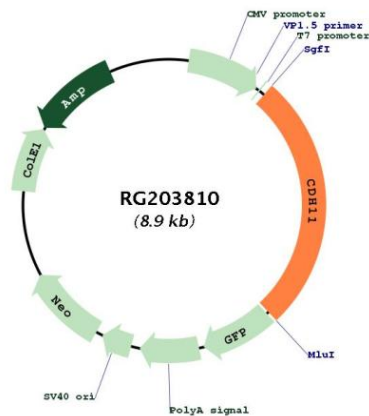
Cytogenetics: 16q21

Domains: Cadherin_C_term, CA

Protein Families: Druggable Genome, Transmembrane

Gene Summary: This gene encodes a type II classical cadherin from the cadherin superfamily, integral membrane proteins that mediate calcium-dependent cell-cell adhesion. Mature cadherin proteins are composed of a large N-terminal extracellular domain, a single membrane-spanning domain, and a small, highly conserved C-terminal cytoplasmic domain. Type II (atypical) cadherins are defined based on their lack of a HAV cell adhesion recognition sequence specific to type I cadherins. Expression of this particular cadherin in osteoblastic cell lines, and its upregulation during differentiation, suggests a specific function in bone development and maintenance. [provided by RefSeq, Jul 2008]

Product images:



Circular map for RG203810