

Product datasheet for **RG203792**

TOX1 (TOX) (NM_014729) Human Tagged ORF Clone

Product data:

Product Type:	Expression Plasmids
Product Name:	TOX1 (TOX) (NM_014729) Human Tagged ORF Clone
Tag:	TurboGFP
Symbol:	TOX1
Synonyms:	TOX1
Mammalian Cell Selection:	Neomycin
Vector:	pCMV6-AC-GFP (PS100010)
E. coli Selection:	Ampicillin (100 ug/mL)



[View online »](#)

ORF Nucleotide Sequence:

>RG203792 representing NM_014729
 Red=Cloning site Blue=ORF Green=Tags(s)

TTTTGTAATACGACTCACTATAGGGCGGCCGGGAATTCGTCGACTGGATCCGGTACCGAGGAGATCTGCC
 GCC**CGCATCGCC**

ATGGACGTAAGATTTTATCCACCTGTAGCCAGCCCGCCGCTGCGCCGACGCTCCCTGTCTGGACCTT
 CTCCTGCCTGGACCCCTACTATTGCAACAAGTTTGACGGTGAGAACATGTATATGAGCATGACAGAGCC
 GAGCCAGGACTATGTGCCAGCCAGCCAGTCTACCCTGGTCCAAGCCTGGAAGTGAAGACTTCAACATT
 CCACCAATTACTCCTCCTCCCTCCCAGACCCTCGCTGGTGCACCTGAATGAAGTTGAGCTGGTTACC
 ATTCTCTGTGTACCCCCATGAACCATAATGGCCTGCTACCATTTCCATCCACAAAACATGGACCTCCCTGA
 AATCACAGTCTCCAATATGCTGGGCCAGGATGGAACACTGCTTTCTAATTCATTCTGTGATGCCAGAT
 ATACGAAACCCAGAAGGAACCTAGTACAGTTCCCATCCTCAGATGGCAGCCATGAGACCAAGGGGCCAGC
 CTGCAGACATCAGGCAGCAGCCAGGAATGATGCCACATGGCCAGCTGACTACCATTAACCACTCACAGCT
 AAGTGCTCAACTTGGTTTGAATATGGGAGGAAGCAATGTTCCCCACAACCTCACCATCTCCACCTGGAAGC
 AAGTCTGCAACTCCTTACCATCCAGTTTCAAGTGAAGATGAAGGCGATGATACCTCTAAGATCAATG
 GTGGAGAGAAGCGGCCTGCCTCTGATATGGGAAAAAACCAAAACTCCCAAAAAGAAGAAGAAGAGGA
 TCCCAATGAGCCCCAGAAGCCTGTGTCTGCCTATGCGTTATTCTTTCGTGATACTCAGGCCGCCATCAAG
 GGCCAAAATCCAAACGCTACCTTGGCGAAGTCTCTAAAATTGTGGCTTCAATGTGGGACGGTTTAGGAG
 AAGAGCAAAAACAGGTCTATAAAAAGAAAACCGAGGCTGCGAAGAAGGAGTACCTGAAGCAACTCGCAGC
 ATACAGAGCCAGCCTTGTATCCAAGAGCTACAGTGAACCTGTTGACGTGAAGACATCTCAACCTCCTCAG
 CTGATCAATTGAAAGCCGTCGGTGTCCATGGGCCAGCCAGGCCACTCGGCCCTGTACCTAAGTTCCC
 ACTATCACCAACAACCGGAATGAATCCTCACCTAACTGCCATGCATCCTAGTCTCCCAGGAACATGAC
 CCCAAGCCGAATAACCAAATGCCAGTGTCTCTATAGCAAAACATGGCTGTGTCCCTCCTCCTCCC
 CTCCAGATCAGCCCGCCTCTTACCAGCATCTCAACATGCAGCAGCACCAGCCGCTCACCATGCAGCAGC
 CCCTTGGGAACCAGCTCCCCATGCAGGTCCAGTCTGCCTTACACTCACCCACCATGCAGCAAGGATTTAC
 TCTTCAACCCGACTATCAGACTATTATCAATCCTACATCTACAGCTGCACAAGTTGTACCCAGGCAATG
 GAGTATGTGCGTTCGGGGTGCAGAAATCCTCCCCACAACCGGTGGACTGGAATAACGACTACTGCAGTA
 GTGGGGCATGCAGAGGGACAAAGCACTGTACCTTACT

ACGCGTACGCGGCCGCTCGAG - GFP Tag - GTTTAA

Protein Sequence:

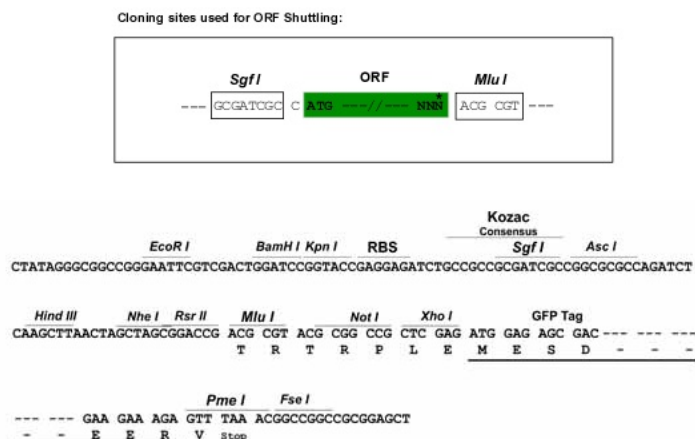
>RG203792 representing NM_014729
 Red=Cloning site Green=Tags(s)

MDVRFYPPVAQPAAPDAPCLGSPCLDPYYCNKFDGENMYMSMTEPSQDYVPASQSYPGPSLESEDFNI
 PPITPPSLPDHSLVHLNEVESGYHSLCHPMNHNGLLPFHPQNMDLPEITVSNMLGQDGTLLSNSISVMPD
 IRNPEGTQYSSHPQMAAMRPRGQPADIRQPGMMPHGQLTTINQSQLSAQLGLNMGGSNVPHNPSPPGS
 KSATPSPSSSVHEDEGDDTSKINGGEKRPASDMGKPKTPKPKKPKKDPNEPQKPVSAAYLFFRDTQAAIK
 GQNPNAIFGEVSKIVASMWDLGEEQKQVYKKTAAKKEYLKQLAAYRASLVSKSYSEPVVKTSQPPQ
 LINSKPSVFHGSPQAHSALYLSSHVHQPGMNPMLTAMHPSLPRNIAPKPNQMPVTVSIANMAVSPPPP
 LQISPLHLQHLNMQQHQPLTMQQPLGNQLPMQVQSALHSPTMQQGFTLQPDYQTIINPTSTAAQVVTQAM
 EYVRSGRNPPQPVDWNNDYCSSGGMQRDKALYLT

TRTRPLE - GFP Tag - V

Restriction Sites:

Sgfl-Mlul

Cloning Scheme:


ACCN: NM_014729

ORF Size: 1578 bp

OTI Disclaimer: The molecular sequence of this clone aligns with the gene accession number as a point of reference only. However, individual transcript sequences of the same gene can differ through naturally occurring variations (e.g. polymorphisms), each with its own valid existence. This clone is substantially in agreement with the reference, but a complete review of all prevailing variants is recommended prior to use. [More info](#)

OTI Annotation: This clone was engineered to express the complete ORF with an expression tag. Expression varies depending on the nature of the gene.

Components: The ORF clone is ion-exchange column purified and shipped in a 2D barcoded Matrix tube containing 10ug of transfection-ready, dried plasmid DNA (reconstitute with 100 ul of water).

Reconstitution Method:

1. Centrifuge at 5,000xg for 5min.
2. Carefully open the tube and add 100ul of sterile water to dissolve the DNA.
3. Close the tube and incubate for 10 minutes at room temperature.
4. Briefly vortex the tube and then do a quick spin (less than 5000xg) to concentrate the liquid at the bottom.
5. Store the suspended plasmid at -20°C. The DNA is stable for at least one year from date of shipping when stored at -20°C.

RefSeq: [NM_014729.2](#), [NP_055544.1](#)

RefSeq Size: 4131 bp

RefSeq ORF: 1581 bp

Locus ID: 9760

UniProt ID: [O94900](#)

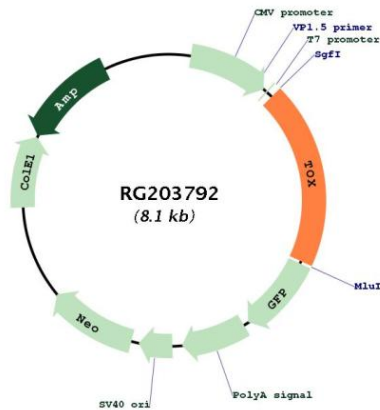
Cytogenetics: 8q12.1

Domains: HMG

Protein Families: Transcription Factors

Gene Summary: The protein encoded by this gene contains a HMG box DNA binding domain. HMG boxes are found in many eukaryotic proteins involved in chromatin assembly, transcription and replication. This protein may function to regulate T-cell development.[provided by RefSeq, Apr 2009]

Product images:



Circular map for RG203792