

Product datasheet for **RG203775**

SNF2H (SMARCA5) (NM_003601) Human Tagged ORF Clone

Product data:

Product Type:	Expression Plasmids
Product Name:	SNF2H (SMARCA5) (NM_003601) Human Tagged ORF Clone
Tag:	TurboGFP
Symbol:	SNF2H
Synonyms:	hISWI; hSNF2H; ISWI; SNF2H; WCRF135
Mammalian Cell Selection:	Neomycin
Vector:	pCMV6-AC-GFP (PS100010)
E. coli Selection:	Ampicillin (100 ug/mL)
ORF Nucleotide Sequence:	>RG203775 representing NM_003601 Red=Cloning site Blue=ORF Green=Tags(s)

TTTTGTAATACGACTCACTATAGGGCGGCCGGAATTCGTCGACTGGATCCGGTACCGAGGAGATCTGCCGCC**CGATCGCC**

ATGTCGTCGGCGCCGAGCCTCCGCCACCCCGCCTCCCGAGAGCGCGCCTTCCAAGCCCGCAGCCTCGA
TCGCCAGCGGGGAGCAACAGCAGCAACAAGGCGGCCCGAAGGCGTCGCGGCGCAGGCGTTGCGTC
TGCGGCCAGCGCTGGTCCCGCAGACGCGGAGATGGAGGAAATATTTGATGATGCGTCACCTGGAAAGCAA
AAGGAAATCCAAGAACCAGATCTTACCTATGAAGAAAAATGCAAAGTACCGGGCAAATAGATTCGAGT
ATTTATTAAGCAGACAGAACTTTTGCACATTTCACTCAACCTGCTGCTCAGAAGACTCCAACCTCACC
TTTGAAGATGAAACCAGGCGGCCACGAATAAAAAAGATGAGAAGCAGAACTTACTATCCGTTGGCGAT
TACCGACACCGTAGAACAGAGCAAGAGGAGGATGAAGAGCTATTAACAGAAAGCTCCAAAGCAACCAATG
TTTGCACCTCGATTTGAAGACTCTCCATCGTATGTAATGGGGTAAACTGAGAGATTATCAGGTCGGAGG
ATTAAGCTGGCTCATTCTTTGTATGAGAATGGCATCAATGGTATCCTTGCAGATGAAATGGGCCTAGGA
AAGACTCTTCAACAATTTCTCTTTGGGTACATGAAACATTATAGAAACATTCCTGGGCTCATATGG
TTTTGGTTCCTAAGTCTACATTACAACTGGATGAGTGAATCAAGAGATGGGTACCAACACTTAGATC
TGTTTGTGATAGGAGATAAAGAACAAGAGCTGCTTTTGTGAGAGACGTTTTATTACCGGAGAAATGG
GATGTATGTGAACATCTTATGAAATGCTTATTAAGAGAAGTCTGTGTTCAAAAAATTTAATTGGAGAT
ACTTAGTAATAGATGAAGCTCACAGGATCAAAAAAGAAAAATCTAAGTTGTCAGAAATAGTGAGGGAATT
CAAGACTACAAATAGACTATTATTAAGTGAACACCTCTTCAGAACAACTTGCATGAGCTGTGGTCACTT
CTTAACCTTCTGTTGCCAGATGTGTTAATTCAGCAGATGACTTTGATTCTGGTTTGATACAAACAACT
GCCTTGGGATCAAAAACTAGTTGAGAGGCTTCATATGGTTTTGCGTCCATTCTCCTTCGTCGAATTA
GGCTGATGTTGAAAAGAGTTTGCCTCCAAAGAAGGAAAGTAAAAATCTATGTGGCCTCAGCAAAATGCAA
AGGGAATGGTAACTCGGATATTAATGAAGGATATAGATATACTCAACTCAGCAGGCAAGATGGACAAAA
TGAGGTTATTGAACATCCTAATGCAGTTGAGAAAAATGTTGTAATCATCCATATCTCTTTGATGGAGCAGA
ACCTGGTCCACCTTATACAACAGATATGCATCTAGTAACCAACAGTGGCAAAATGGTGGTTTTAGACAAG



[View online »](#)

CTGCTCCCTAAGTTAAAAGAACAAGGTTACGAGTACTAATCTTCAGTCAAATGACAAGGGTATTGGACA
 TTTTGGAAAGATTATTGCATGTGGAGAAATTATGAGTACTGCAGGTTGGATGGTCAGACACCCCATGATGA
 GAGACAAGACTCCATCAATGCATACAATGAACCAACAGCACAAAGTTTGTTCATGTTAAGCACGCGT
 GCTGGTGGTCTTGGCATCAATCTTGGCACTGCTGATGTAGTAATTTTGTATGATTCTGATTGGAATCCCC
 AAGTAGATCTTCAGGCTATGGACCGAGCACATAGAATTGGGCAGACTAAGACAGTCAGAGTGTCCGCTT
 TATAACTGATAACACTGTAGAAGAAAGAATAGTAGAACGTGCTGAGATGAAACTCAGACTGGATTCAATA
 GTCATTCAACAAGGGAGGCTTGTGGATCAGAATCTGAACAAAATTGGGAAAGATGAAATGCTTCAAATGA
 TTAGACATGGAGCAACACATGTGTTGCTTCAAAGGAAAGTGAATCACTGATGAAGATATCGATGGTAT
 TTTGAAAGAGGTTGCAAAGAAGACTGCAGAGATGAATGAAAAGCTCTCCAAGATGGGCGAAAAGTTCACTT
 AGAAACTTTACAATGGATACAGAGTCAAGTGTATAACTTCAAGGAGAAGACTATAGAGAAAAACAAA
 AGATTGCATTACAGAGTGGATTGAACCACCTAAACGAGAAAGAAAAGCCAACTATGCCGTTGATGCATA
 TTTCCAGGGAAGCTCTTCGTGTTAGTGAACCTAAAGCACCAAGGCTCCTCGACCTCCAAAACAACCCAAAT
 GTTCAGGATTTCCAGTCTTTCTCCACGTTTATTTGAATTACTGGAAAAAGAAATCTGTTTTACAGAA
 AACTATTGGGTACAAGTACCTCGAAATCCTGAGCTGCCTAACGCAGCACAGGCACAAAAGAAGAACA
 GCTTAAAATTGATGAAGCTGAATCCCTAATGATGAAGAGTTAGAGGAAAAGAGAAGCTTCTAACACAG
 GGATTTACCAATTGGAATAAGAGAGATTTAACCAGTTTATCAAAGCTAATGAGAAGTGGGGTCGTGATG
 ATATTGAAAATATAGCAAGAGAAGTAGAAGGCAAAACTCCAGAAGAAGTCATTGAATATTAGCTGTGTT
 TTGGGAAAGGTGCAACGAGCTCCAGGACATAGAGAAGATTATGGCTCAGATTGAAAGGGGAGAGGCGAGA
 ATTCAAAGAAGAAATAGCATCAAGAAAGCACTTGACACAAAGATTGGACGGTACAAGCACCTTTTCATC
 AGCTGAGAATATCATATGGTACTAACAAAGGAAAAAATACTGAAGAAGAAGATCGTTTTCTGATTTG
 TATGCTTCACAACTTGGATTTGACAAAGAAAATGTTTATGATGAATTGCGACAGTGTATTCCGAACTCT
 CCTCAGTTCAGATTTGACTGGTTTCTTAAGTCCAGAAGTCAATGGAGCTCCAGAGGAGATGTAATACCT
 TAATTAATTTGATTGAAAGAGAAAACATGGAAGTGAAGAAAAGGAGAAGGCAGAGAAAAGAAACGAGG
 ACCAAAGCCTTCAACACAGAAACGTAATAATGGATGGCGCACCTGATGGTCGAGGAAGAAAAGAAAGCTG
 AACTA

AGCGGACCGACGCGTACGCGGCCGCTCGAG - GFP Tag - GTTTAA

Protein Sequence:

>RG203775 representing NM_003601

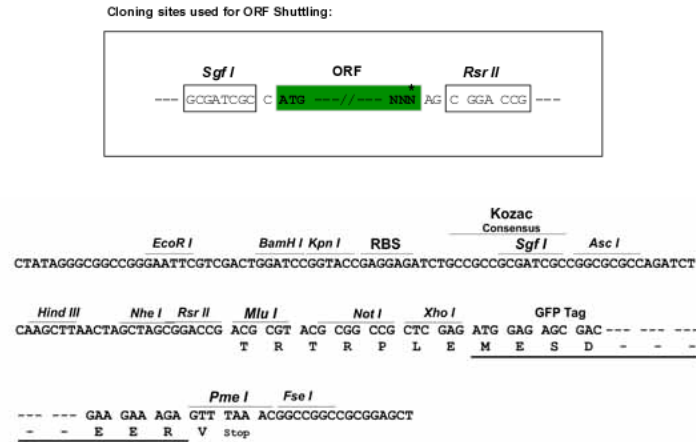
Red=Cloning site Green=Tags(s)

MSSAAEPPPPPPESAPSKPAASIASGGSNSSNKGPEGVAAQAVASAASAGPADAEMEEIFDDASPGKQ
 KEIQEPDPTYEEKMQTDRANRFEYLLKQTELF AHFIQPAAQKTPSPLKMKPGRPRIKKDEKQNLSSVGD
 YRHRRTQEEDDELL TESSKATNVCTRFEDSPSYVKWGLRQYVRLNWLISLYENGINGLADEMGLG
 KTLQTIISLLGYMKHYRNIPGPHMVLVPKSTLHNWSEFKRWVPTLRVCLIGDKEQRAAFVRDVLVLPGEW
 DVCVTSYEMLIKEKSVFKFNWRYLVIDEAHRIKNEKSKLSEIVREFKTTNRLLLTGTPLQNNLHELWSL
 LNFLLPDVFN SADD FDSWFD TNCLGDQKLVERLHMVLRPFLRRRIKADVEKSLPPKKEVKIYVGLSKMQ
 REWYTRILMKDIDILNSAGKMDKMRLNINLMQLRKCCHPYLFDGAEPGPPYTTDMHLVTNSGKMVVLDK
 LLPKLKEQGSRVLIFSQMTRVLDILEDYCMWRNYEYCRLDGQTPHDERQDSINAYNEPNSTKVFMLSTR
 AGGLGINLATADV VILYSDWNPQVLDLQAMDRAHRIGQTKTVRVFRFITDNTVEERIVERAEMKRLDSI
 VIQQGRLVDQNLNKIGKDEMLQIRHGATHVFASKESI TDEDIDGILERGAKKTAE MNEKLSKMGESSL
 RNFTMDTESSVYNFEGEDYREKQKIAFTEWIEPPKRERKANYAVDAYFREALRVSEPKAPRPPKQPN
 VQDFQFFPRLFELLEKEILFYRKTIGYKVPNPPEL PNAQAQKEEQKIDEAESLNDEELEEKEKLLTQ
 GFTNWNKRDFNQFIKANEKWRDDIENIAREVEGKTPEEVI EYSAVFWERCNELQDIEKIMAQIERGEAR
 IQRRISIKKALDTKIGRYKAPFHQLRISYGTNKGKNYEEEDRFLICMLHKLGFDKENVYDEL RQCIRNS
 PQFRFDWFLKSR TAMELQRRCNTLITLIERENMELEEKEAEKKGPKPSTQKRKMDGAPDGRGRKKKL
 KL

SGPTRRRLE - GFP Tag - V

Restriction Sites:

Sgfl-RsrII

Cloning Scheme:


ACCN: NM_003601

ORF Size: 3156 bp

OTI Disclaimer: The molecular sequence of this clone aligns with the gene accession number as a point of reference only. However, individual transcript sequences of the same gene can differ through naturally occurring variations (e.g. polymorphisms), each with its own valid existence. This clone is substantially in agreement with the reference, but a complete review of all prevailing variants is recommended prior to use. [More info](#)

OTI Annotation: This clone was engineered to express the complete ORF with an expression tag. Expression varies depending on the nature of the gene.

Components: The ORF clone is ion-exchange column purified and shipped in a 2D barcoded Matrix tube containing 10ug of transfection-ready, dried plasmid DNA (reconstitute with 100 ul of water).

Reconstitution Method:

1. Centrifuge at 5,000xg for 5min.
2. Carefully open the tube and add 100ul of sterile water to dissolve the DNA.
3. Close the tube and incubate for 10 minutes at room temperature.
4. Briefly vortex the tube and then do a quick spin (less than 5000xg) to concentrate the liquid at the bottom.
5. Store the suspended plasmid at -20°C. The DNA is stable for at least one year from date of shipping when stored at -20°C.

RefSeq: [NM_003601.3](#)

RefSeq Size: 3866 bp

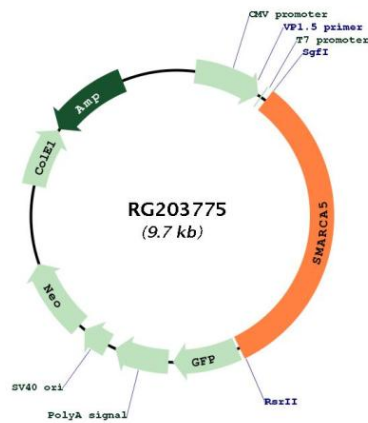
RefSeq ORF: 3159 bp

Locus ID: 8467

UniProt ID: [O60264](#)
Cytogenetics: 4q31.21
Domains: SNF2_N, myb_DNA-binding, DEAD, helicase_C
Protein Families: Transcription Factors

Gene Summary: The protein encoded by this gene is a member of the SWI/SNF family of proteins. Members of this family have helicase and ATPase activities and are thought to regulate transcription of certain genes by altering the chromatin structure around those genes. The protein encoded by this gene is a component of the chromatin remodeling and spacing factor RSF, a facilitator of the transcription of class II genes by RNA polymerase II. The encoded protein is similar in sequence to the Drosophila ISWI chromatin remodeling protein. [provided by RefSeq, Jul 2008]

Product images:



Circular map for RG203775