

## Product datasheet for **RG203733**

### Gemin 4 (GEMIN4) (NM\_015721) Human Tagged ORF Clone

#### Product data:

Product Type:	Expression Plasmids
Product Name:	Gemin 4 (GEMIN4) (NM_015721) Human Tagged ORF Clone
Tag:	TurboGFP
Symbol:	GEMIN4
Synonyms:	HC56; HCAP1; HHRF-1; NEDMCR; p97
Mammalian Cell Selection:	Neomycin
Vector:	pCMV6-AC-GFP (PS100010)
E. coli Selection:	Ampicillin (100 ug/mL)
ORF Nucleotide Sequence:	>RG203733 representing NM_015721 Red=Cloning site Blue=ORF Green=Tags(s)

TTTTGTAATACGACTCACTATAGGGCGGCCGGAATTCGTCGACTGGATCCGGTACCGAGGAGATCTGCC  
GCC**CGATCGCC**

ATGGACCTAGGACCCCTTGAACATCTGTGAAGAAATGACTATTCTGCATGGAGGCTTCTTGCTGGCCGAGC  
AGCTGTTCCACCCTAAGGCACTGGCAGAATTAACAAAGTCTGACTGGGAACGTGTTGGACGGCCCATCGT  
GGAGGCCCTTAAGGGAGATCTCCTCGGCTGCAGCACACTCCAGCCCTTTGCCTGGAAGAAGAAAGCCCTG  
ATCATCATCTGGCCAAGGTTCTGCAGCCGCACCCCGTGACCCCGTCCGACACAGAGACACGGTGGCAGG  
AAGACCTGTTCTCTCGGTGGGCAACATGATCCCACCATCAACCACACCATCCTCTTCGAGCTGCTCAA  
ATCCCTGGAAGCTTCTGGACTCTTATCCAGCTCCTGATGGCCCTGCCACCACCATCTGCCATGCAGAA  
CTAGAGCGCTTTCTGGAACATGTGACCCTTGACACTTCTGCCGAAGACGTGGCCTTCTTCTGGACGCTCT  
GGTGGGAGGTGATGAAGCACAAGGGTCACCCGCAGGACCCCTGCTCTCCAGTTTAGTGAATGGCCCA  
TAAGTACCTGCCTGCCTTAGATGAGTTCACCCATCCTCCAAGAGGCTTAGGTGACAGCCAGACGGTGC  
CCCACCATGCCCTGTTGGCCATGCTGCTCCGCGGGTGACACAGATCCAGAGTCGGATCCTGGGCCCGG  
GGAGGAAGTGTGTGCGCTGGCCAACCTGGCTGACATGCTGACTGTGTTTGGCTGACAGAGGACGACCC  
CCAGGAGGTGTCTGCAACCGTGTATCTGGACAACTGGCCACGGTGTCTCTGTGGAAGTCCGGACACC  
CAGAATCCCTACCACAGCAGGCGTGGCAGAGAAGGTGAAGGAGGCAGAACGGGATGTGACGCTGACCT  
CGCTGGCCAACTCCCAAGTGGACCATTTTCGTGGGCTGCGAGTTCTGCACCACCTGCTGCGGGAGTG  
GGGGGAGGAGTTGCAGGCCGTGCTCCGACGAGCCAGGGGACAAGTTACGACAGTACCGCTGTGCGAC  
AGTCTGACTTCTTCAGCCAGAACGCGACGCTCTACCTGAACCGCACCAGCCTGTCCAAGGAGGACAGGC  
AGGTGGTCTCTGAGCTGGCGGAGTGTGTGAGGACTTCTGAGGAAAACGAGCACGGTGTGAAGAACAG  
GGCCTTGAGGATATCACAGTTCATTGCCATGGCCGTCATCCAGCAGAAGATGGACCGCCATATGGAA  
GTGTGCTACATTTTTGCCTCTGAGAAGAAGTGGGCCTTCTCGGACGAGTGGGTAGCCTGCCTGGGGAGTA  
ACAGGGCCCTCTCCGAGAGCCAGACTTGGTGTGAGGCTGCTGGAAACAGTGATAGACGTCAGCACAGC  
TGACAGAGCCATCCCTGAGTCTCAGATCCGGCAGGTGATCCACCTGATCCTGGAATGTTACGACAGCCTC



[View online »](#)

```

TCCTGCCAGGTA AAAATAAAGTCCTTGCAAGTATCCTGCGTTCCTGGGGCGAAAGGGCCTCTCTGAAA
AGTTGCTGGCTTATGTGGAGGGTTTTAGGAAGACCTCAATACAACCTTTAAACCAGCTCACTCAGAGTGC
CTCCGAACAGGGCTTGGCAAAGCTGTGGCCTCCGTGGCCCGCCTGGTCATAGTGCACCCGGAAGTCACG
GTGAAGAAAATGTGCAGCCTGGCTGTGGTCAATCTCGGACCCACAAGTTCCTGGCCAGATTCTCACTG
CCTTCCCTGCCCTTAGGTTTGTGAAGAGCAGGGTCCCAATTCATCTGCCACTTTCATGGTGTATGCCT
CAAAGAAAACCGTCTGGATGAAGTCTCTACACCAAGGAAGAAAAGCAATTTTATAGACTCCTGAACTGC
CTGATGAGTCCCGTGAACCCCAAGGGATTCCAGTGGCTGCTCTCTTGGCCAGACGAGGTGCTGAAGG
AATTTGTCTGCCTTCTTGGAGTTAGATGTTGAAGAGGTAGACCTCAGTCTGAGGATCTTCATCCAGAC
TCTAGAGGCAAACGCGTGCCGAGAGGAATACTGGCTCCAGACCTGCTCCCGTTTCCACTCCTCTCAGC
TTGTGCCAGCTCTTGACCGCTCAGCAAATACTGGCAGCTTCCCAAGGAGAAGCGGTGCCTCTCTTTGG
ATAGGAAGGATCTAGCGATCCATATCCTGGAGCTCCTGTGTGAGATTGTATCAGCCAATGCTGAGACCTT
CTCCCCGATGTCTGGATCAAGTCCCTGTCTGGCTCCACCGCAAGTTAGAACAGCTAGACTGGACTGTG
GGCCTGAGGCTGAAGAGCTTCTCGAGGGGCACCTCAAGTGTGAAGTCCAGCCACACTTTTTGAGATCT
GTAAGCTTTCAGAAGACGAGTGGACCTCCAGGCCACCCAGGGTACGGGGCTGGCACGGGGCTCCTGGC
CTGGATGGAGTGTGCTGCGTCTCCAGCGCATCTCGGAGAGGATGCTGTCTCTTGGTGGTGGACGTG
GGCAATCCTGAGGAGGTAGACTGTTTCCAGAAAGGCTTCTGGTGGCCCTGGTGAAGTCAATGCCTTGGT
GCAGCCCTCAGGAGTGGCAGCGCCTTACCAGCTGACCAGGAGACTGCTGGAGAAGCAGCTCCTCCATGT
CCCTTATAGCCTGGAATATATTCAGTTTGTTCCTGCTCAACCTGAAGCCCTTGGCCAGGAGTTGCAA
CTCTCCGTCTCTTCTGAGGACTTTCAGTTTCTCTGCAGCCATAGCTGTCTGTAATTGGCTTCTCTGG
AAGGCTGGAACACGTTGTTCAAACCTCTGTGGCAGTCTGACCCGCTCCTGGACTCAGTCAGGGCGAT
ACAGGCAGCTGGCCCTTGGGTTCAAGGACCAGAGCAGGACCTGACCCAGGAAGCCCTGTTTGTTTACACC
CAGGTGTTCTGCCATGCTCTGCACATCATGGCCATGCTCCACCCGAGGTCTGTGAGCCACTCTACGTTT
TAAGTATTGAAACCCCTCACCTGCTATGAGACTTTGAGCAAGACCAACCCCTCTGTGAGCTCCTTGCCTT
AAGGGCACACGAGCAGCGCTTCTTAAAGTCCATTGCTGAGGGCATCGGCCCTGAAGAACGGCCCAAACC
CTGTTGAGAAGATGAGCAGCTTC
    
```

AGCGGACCGACCGTACGCGGCCGCTCGAG - GFP Tag - GTTTAA

**Protein Sequence:**

>RG203733 representing NM\_015721

Red=Cloning site Green=Tags(s)

```

MDLGPLNICEEMTILHGGFLLAEQLFHPKALAE LTKSDWERVGRPIVEALREISSAAHSQPF AWKKKAL
IIIWAKVLQPHVTPSDTETRWQEDLFFSVGNMIPTINHILFELLKSLEASGLFIQLLMALPTTICHAE
LERFLEHVTVDTS AEDVAFFLDVWVEVMKHKGHPQDPLL SQFSAMAHKYL PALDEFPHPPKRLRSDPDAC
PTMPLLAMLLRGLTQIQSRILGPRKCCALANLADMLTVFALTEDDPQEV SATVYLDK LATVISVWNSDT
QNPYHQQALAEKVKEAERDVSLTSLAKLPSETIFV GCEFLHLLREWGEELQAVLRSSQGSYDSYRLCD
SLTSFSQ NATLYLNRTSLSKEDRQVVSELAECVRDFLRKTSTVLKNRALEDITASIAMA VIQQMDRHME
VCYIFASEKKWAFSDEWVACLGSNRALFREPD LVLRLLETVIDVSTADRAIPESQIRQVIHLILECYADL
SLPGKNKVLGILRSWGRKGLSEKLLAYVEGFQEDLNTTFNQLTQ SASEQLAKAVASVARLVIVHPEVT
YKKMCSLAVVNLGTHKFLGQILTAFPALRFV EEQGNSSATFMV SCLKETVWMKFSTPKEEKQFLELLNC
LMSPVKPQGIPVAALLEPDEVLKEFVLPFLRLDVEEVDLSLRIFIQ TLEANACREEYWLQTCSPFP LLS
LCQLLDRFSKYWQLPKEKRCLSLDRKDLAIHILELLCEI VSANAETFSPDVWIKSLSWLHRKLEQLDWTV
GLRLKSF FEGHFKEVPATLFEICKLSEDEWTSQAHPGYGAGTG LLAWMECCCVSSG I SERMLSLLVVDV
GNPEEVRLFSKGFLVALVQVMPWCSPQEWQRLHQLTRR LLEKQLLHVPYSLEYIQFVPLNLKPFAQELQ
LSVLFLRTFQFLCSHSCRNWPLEGWNHVVKLLCGSLTRLLDSVRAIQ AAGPWVQGPEDLTQEALFVYT
QVFCHALHIMAMLHPEVCEPLYVLSIETLTCYETLSKTNPSVSSLR SRAHEQRFLKSI AEGIGPEERRQT
LLQKMSSF
    
```

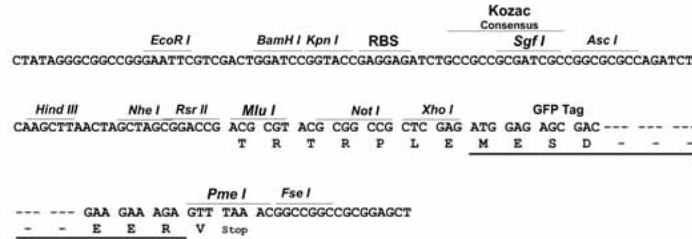
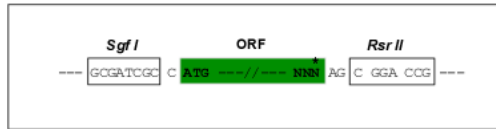
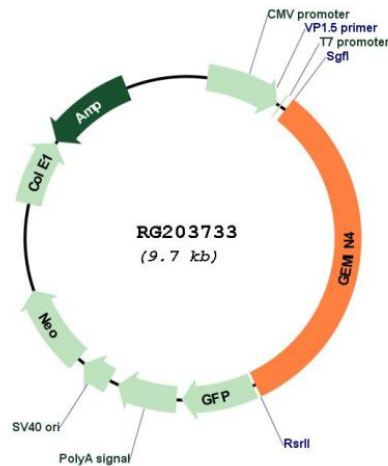
SGPTRRRLE - GFP Tag - V

**Restriction Sites:**

Sgfl-RsrII

**Cloning Scheme:**

Cloning sites used for ORF Shuttling:


**Plasmid Map:**

**ACCN:** NM\_015721

**ORF Size:** 3174 bp

**OTI Disclaimer:** The molecular sequence of this clone aligns with the gene accession number as a point of reference only. However, individual transcript sequences of the same gene can differ through naturally occurring variations (e.g. polymorphisms), each with its own valid existence. This clone is substantially in agreement with the reference, but a complete review of all prevailing variants is recommended prior to use. [More info](#)
**OTI Annotation:** This clone was engineered to express the complete ORF with an expression tag. Expression varies depending on the nature of the gene.

<b>Components:</b>	The ORF clone is ion-exchange column purified and shipped in a 2D barcoded Matrix tube containing 10ug of transfection-ready, dried plasmid DNA (reconstitute with 100 ul of water).
<b>Reconstitution Method:</b>	<ol style="list-style-type: none"><li>1. Centrifuge at 5,000xg for 5min.</li><li>2. Carefully open the tube and add 100ul of sterile water to dissolve the DNA.</li><li>3. Close the tube and incubate for 10 minutes at room temperature.</li><li>4. Briefly vortex the tube and then do a quick spin (less than 5000xg) to concentrate the liquid at the bottom.</li><li>5. Store the suspended plasmid at -20°C. The DNA is stable for at least one year from date of shipping when stored at -20°C.</li></ol>
<b>RefSeq:</b>	<a href="#">NM_015721.2</a> , <a href="#">NP_056536.2</a>
<b>RefSeq Size:</b>	3757 bp
<b>RefSeq ORF:</b>	3177 bp
<b>Locus ID:</b>	50628
<b>UniProt ID:</b>	<a href="#">P57678</a>
<b>Cytogenetics:</b>	17p13.3
<b>Protein Families:</b>	Druggable Genome
<b>Gene Summary:</b>	The product of this gene is part of a large complex localized to the cytoplasm, nucleoli, and to discrete nuclear bodies called Gemini bodies (gems). The complex functions in spliceosomal snRNP assembly in the cytoplasm, and regenerates spliceosomes required for pre-mRNA splicing in the nucleus. The encoded protein directly interacts with a DEAD box protein and several spliceosome core proteins. Alternatively spliced transcript variants have been described, but their biological validity has not been determined. [provided by RefSeq, Jul 2008]