

## Product datasheet for **RG203728**

### **KLHL9 (NM\_018847) Human Tagged ORF Clone**

#### **Product data:**

Product Type:	Expression Plasmids
Product Name:	KLHL9 (NM_018847) Human Tagged ORF Clone
Tag:	TurboGFP
Symbol:	KLHL9
Mammalian Cell Selection:	Neomycin
Vector:	pCMV6-AC-GFP (PS100010)
E. coli Selection:	Ampicillin (100 ug/mL)



[View online »](#)

**ORF Nucleotide Sequence:**

>RG203728 representing NM\_018847  
 Red=Cloning site Blue=ORF Green=Tags(s)

TTTTGTAATACGACTCACTATAGGGCGGCCGGAATTCGTCGACTGGATCCGGTACCGAGGAGATCTGCC  
 GCC**CGCATCGCC**

ATGAAAGTGTCCCTTGGTAACGGCGAAATGGGCGTCTCTGCCATTTGCAGCCTTGAAGCAGGAACCA  
 CAGCCTTTTTTACCAGCAATACTCACAGTTCGGTGGTATTGCAAGCCTTTGATCAGCTTAGAATAGAAGG  
 ATTGCTTTGTGATGTGACCCTGGTACCAGGTGATGGAGATGAAATCTTCCTGTTACAGAGCTATGATG  
 GCGTCTGCTAGTGATTATTTCAAAGCCATGTTACAGGTGGAATGAAAGAACAAGATTTGATGTGCATTA  
 AGCTTCATGGGGTGAACAAGGTTGGTCTGAAGAAAATCATTGATTTTATTATACTGCAAACTTTCTCT  
 TAATATGGACAATCTTCAGGACACACTTGAAGCTGCTAGCTTTTTACAAATATTACCCGTTTTGGATTC  
 TGTAAGTATTTCTATATCAGGAGTCTCTTTGGATAATTGTGTTGAGGTTGGACGAATTGCTAACACCT  
 ACAATCTTATAGAAGTGATAAATATGTTAATAATTTTCATCCTGAAGAACTTTCTGCTTTATTGAGTAC  
 TGGGGAGTTTCTAAAACCTCTTTGAACGACTTGCATTTGTGCTTTCCAGTAATAGTCTTAAGCACTGT  
 ACCGAACTTGAACCTTTAAGGCAGCCTGTCGCTGGCTAAGGTTGGAAGACCCTCGGATGGATTATGCTG  
 CAAAGTTAATGAAGAATATTCGATTTCCACTGATGACACCACAGGATCTCATCAATTACGTGCAGACAGT  
 AGATTTTATGAGAACAGACAATACCTGCGTGAATTTGCTTTTGGAAAGCTAGCAATTACCAATGATGCCA  
 TATATGCAGCCAGTGTGAGTCAAGTACAAGTGCATTTCCGATCTGACTCCACTCACTTGGTTACATTAG  
 GAGGAGTTTTGAGGCAGCAGCTGGTTGTCAGTAAAGAATTACGGATGTATGATGAAAGGGCACAAGAATG  
 GAGATCTTTAGCCCAATGGATGCTCCCGTTACCAGCATGGTATTGCTGTCATTGGAACTTTCTTTAT  
 GTAGTTGGTGGTCAAGTAATTATGATACAAAAGGAAAACTGCTGTTGATACAGTTTTTCAGATTTGATC  
 CTCGGTATAATAAATGGATGCAGTTGCATCAATAAATGAAAAGCGCACATTTCTTCACTTGAGTGCCCT  
 CAAAGGCATTTGTATGCAGTTGGTGGGCGCAGTGCAGCTGGTGAACCTGGCCACAGTAGAATGTTACAAC  
 CCAAGAATGAATGAGTGGAGCTATGTTGCAAAAATGAGTGAACCCCACTATGGTCATGCTGGAACAGTAT  
 ATGGAGGCTTAATGTATATTTTCCAGGAGGAATTACCCATGACACTTTCCAAAATGAGCTCATGTGTTTTGA  
 CCCAGATACAGATAAATGGATGCAAAAGGCTCCAATGACTACAGTCAAGGCTGCTGATTGCATGTGTACA  
 GTTGGAGATAAGCTCTATGTCATTGGTGGCAATCACTTCAAGGAACAAGTATTATGATGATGTTCTAA  
 GCTGTGAATACTATTCACCAACCCTTGACCAGTGGACCCCAATTGCCGCCATGTTAAGAGGCCAAAGTGA  
 TGTTGGAGTTGCCGCTTTGAAAATAAAATCTATGTTGTTGGTGGATATCTTGGAAATACGTTGTATG  
 GTAGAAAATGTCCAGAAATATGACCCAGAAAAGATGAGTGGCATAAAGTTTTTGATCTTCCAGAGTCAC  
 TTGGTGGCATTGAGCCTGTACACTCACAGTTTTTCCACCTGAAGAAAACCTGGGTACCTTCTAGAGA  
 ATCACCTTTTACGACCTTTCAGATCATTCT

**ACGCGTACGCGGCCGCTCGAG** - GFP Tag - GTTTAA

**Protein Sequence:**

>RG203728 representing NM\_018847  
 Red=Cloning site Green=Tags(s)

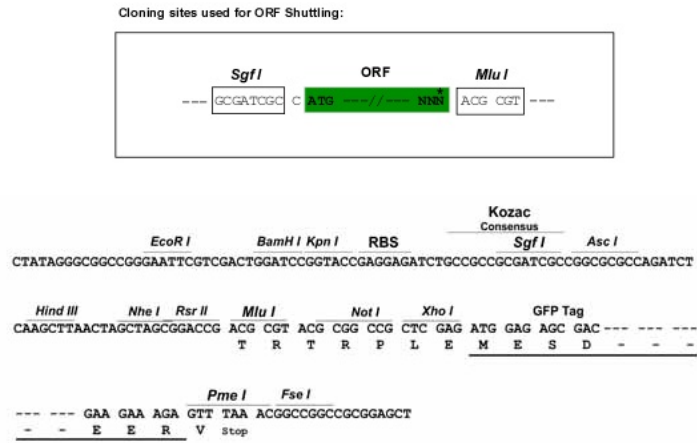
MKVS LGNGEMG VSAHLQ PCKAGTTRFFTSNTHSSVVLQGF DQLRIEGLLCDVTLVPGDGD EIFPVHRAMM  
 ASASDYFKAMFTGGMKEQDLMCIK LHVGNKVG LKKIIDFIYTA KLSL NMDNLQDTLEAASF LQILPVLDF  
 CKVFLISGVSLDNCVEVGRIANTY NLIEVDKYVNNFILKNFPALLSTGEFLKLPFERLAFV LSSNSLKH C  
 TELELFKAACRWLRLEDPRMDYAAKLMKNIRFPLMTPQDLIN YVQTVDFMRTDNTCVNLLLEASNYQMMP  
 YMQPVMQSDRTAIRSDSTHLVTLGGVLRQQLVVSKE LRM YDERAQEWRS LAPMDAPRYQHGI AVIGNFLY  
 VVGQGSNYDTKGTAVD TVFRFDPRYNKWMQV ASLNEKRTFFHL SALKGHL YAVGGRSAAGELATVECYN  
 PRMNEWSYVAKMSEPHYGHAGTVYGG LMYISGGITHDTFQNELMCFDPD TDKWMQKAPMTTVRGLH CMCT  
 VGDKLYVIGGNHFRGTS DYDDVLSCEYYSPTLDQWTP IAAMLRGQSDVGVAVFENKIYVVGGSYWN NRCM  
 VEIVQKYDPEKDEWHKVFDLPESLGGIRACTLTVFPPEENPGSPSRESPLSAPSDHS

**TRTRPLE** - GFP Tag - V

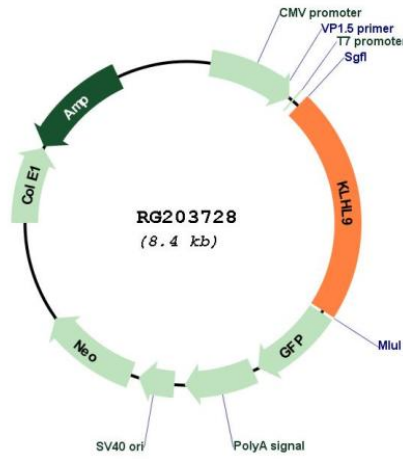
**Restriction Sites:**

Sgfl-MluI

Cloning Scheme:



Plasmid Map:



ACCN: NM\_018847  
 ORF Size: 1851 bp

<b>OTI Disclaimer:</b>	Due to the inherent nature of this plasmid, standard methods to replicate additional amounts of DNA in E. coli are highly likely to result in mutations and/or rearrangements. Therefore, OriGene does not guarantee the capability to replicate this plasmid DNA. Additional amounts of DNA can be purchased from OriGene with batch-specific, full-sequence verification at a reduced cost. Please contact our customer care team at <a href="mailto:custsupport@origene.com">custsupport@origene.com</a> or by calling 301.340.3188 option 3 for pricing and delivery.
	The molecular sequence of this clone aligns with the gene accession number as a point of reference only. However, individual transcript sequences of the same gene can differ through naturally occurring variations (e.g. polymorphisms), each with its own valid existence. This clone is substantially in agreement with the reference, but a complete review of all prevailing variants is recommended prior to use. <a href="#">More info</a>
<b>OTI Annotation:</b>	This clone was engineered to express the complete ORF with an expression tag. Expression varies depending on the nature of the gene.
<b>Components:</b>	The ORF clone is ion-exchange column purified and shipped in a 2D barcoded Matrix tube containing 10ug of transfection-ready, dried plasmid DNA (reconstitute with 100 ul of water).
<b>Reconstitution Method:</b>	<ol style="list-style-type: none"> <li>1. Centrifuge at 5,000xg for 5min.</li> <li>2. Carefully open the tube and add 100ul of sterile water to dissolve the DNA.</li> <li>3. Close the tube and incubate for 10 minutes at room temperature.</li> <li>4. Briefly vortex the tube and then do a quick spin (less than 5000xg) to concentrate the liquid at the bottom.</li> <li>5. Store the suspended plasmid at -20°C. The DNA is stable for at least one year from date of shipping when stored at -20°C.</li> </ol>
<b>RefSeq:</b>	<a href="#">NM_018847.2</a> , <a href="#">NP_061335.1</a>
<b>RefSeq Size:</b>	4412 bp
<b>RefSeq ORF:</b>	1854 bp
<b>Locus ID:</b>	55958
<b>UniProt ID:</b>	<a href="#">Q9P2J3</a>
<b>Cytogenetics:</b>	9p21.3
<b>Domains:</b>	BTB, Kelch
<b>Protein Pathways:</b>	Ubiquitin mediated proteolysis
<b>Gene Summary:</b>	This gene encodes a protein that belongs to the kelch repeat-containing family, and contains an N-terminal BTB/POZ domain, a BACK domain and six C-terminal kelch repeats. The encoded protein is a component of a complex with cullin 3-based E3 ligase, which plays a role in mitosis. This protein complex is a cell cycle regulator, and functions in the organization and integrity of the spindle midzone in anaphase and the completion of cytokinesis. The complex is required for the removal of the chromosomal passenger protein aurora B from mitotic chromosomes. [provided by RefSeq, Jul 2016]