

## Product datasheet for **RG203723**

### **KIAA0408 (NM\_014702) Human Tagged ORF Clone**

#### **Product data:**

Product Type:	Expression Plasmids
Product Name:	KIAA0408 (NM_014702) Human Tagged ORF Clone
Tag:	TurboGFP
Symbol:	KIAA0408
Mammalian Cell Selection:	Neomycin
Vector:	pCMV6-AC-GFP (PS100010)
E. coli Selection:	Ampicillin (100 ug/mL)



[View online »](#)

**ORF Nucleotide Sequence:**

>RG203723 representing NM\_014702  
 Red=Cloning site Blue=ORF Green=Tags(s)

TTTTGTAATACGACTCACTATAGGGCGGCCGGAATTCGTGCGACTGGATCCGGTACCGAGGAGATCTGCC  
 GCC**CGGATCGCC**

ATGGACCTACATAAGCAGTGGGAGAACACAGAGACTAACTGGCATAAGGAAAAGATGGAATTACTGGACC  
 AGTTTGACAATGAAAGAAAGGAATGGGAAAGTCAATGGAAGATTATGCAGAAGAAAAAGAGAGCTTTG  
 CCGGGAAGTAAAGCTTTGGAGGAAAATCAATATCAATGAACGTGCTAAGATCATTGATCTTTACCATGAG  
 AAGACCATTCCAGAGAAAGTGATAGAATCTTCCCAAATACCCCGATTTAGGACAAAAGTGAATTTATAA  
 GGACGAATCACAAAGATGGTCTGAGAAAAGAAAATAAAAGAGAGCAGAGCTTAGTCAGTGGAGGAAATCA  
 AATGTGTAAAGAACAAAAAGCAACAAAAAATCAAAGTAGGGTTTTGGATCCTTTGGTACAGACAAC  
 CAAAAGGAATGTGAGGCCTGGCCTGACCTGAGGACTTCTGAGGAAGACAGCAAGAGCTGTCTGGCGCCC  
 TCAGTACAGCTCTGAAGAACTTGCAGAGGTGAGTGAAGAATTATGCAGCTTTCAAGAGGAAATTCGAAA  
 GCGGTCTAACCATAGAAGGATGAAGTCAGATTCTTTCTCCAGGAAATGCCAAATGTAACATAATACCT  
 CATGGGGACCCCATGATCAACAATGACCAGTGCATTCTTCCAATCAGTTTAGAAAAAGAAAAACAGAAAA  
 ATAGGAAGAATCTGAGCTGTACCAATGTCTCCAGAGCAATTCTACGAAAAAATGTGGAATTGATACAAT  
 CGATTTAAAAAGAAATGAACTCCACCAGTTCTCTCCTCCAAGAAGCACCTCTCGAAATTTTCCAGCTCG  
 GATTCTGAAACAAGCCTATGAAAGATGGAAGGAAAGGTTAGACCACAACAGCTGGGTGCCCATGAGGGTC  
 GAAGTAAAAGGAATTACAACCTCACTTCCCTTTGAGACAACAAGAGATGTCTATGTTGTATCCAAATGA  
 AGGGAAAACCTTCGAAAGATGGTATCATCTTTTCTCTTTGGTACCAGAAGTCAAATAGATAGCAAGCCT  
 CCAAGTAATGAAGATGTTGGACTTAGCATGTGGTATGTGACATTGGGATAGGTGCAAAAAGGAGCCCCT  
 CTACTTCGTGGTTTCAGAAAACCTGCTCTACCCCAAGTAATCAAATATGAAATGGTATCCAGATCA  
 CCCTGCTAAATCTCATCCTGATCTTCATGTAAGTAATGACTGTAGCTCCTCAGTAGCAGAGAGCAGTAGC  
 CCACTTAGAAATTCAGTTGTGGCTTTGAAAGGACTACAAGGAATGAGAAGCTGGCAGCAAAGACTGATG  
 AATTTAACAGAACTGATTTAGAACAGATAGAAATGTCAGGCAATACAGCAAAATCACAGCTGCTCAAA  
 ATCATCGGAGGATCTCAAGCCCTGTGATACCTCATCTACTCACACAGGTAGCATATCACAAAGTAACGAT  
 GTGTCCGGTATTTGAAAACCAATGCCACATGCCTGTGCCATGGAAAATGTGCCTGATAATCCCACCA  
 AGAAATCCACAACAGGCCTAGTAAGACAAATGCAGGGACACCTAAGTCTCGCAGTTATCGAAATATGCT  
 CCACGAGCATGACTGGAGACCGAGTAATTTGTCTGGCCGTCGAGGTGAGCTGATCCAGGTCAAATTA  
 GGTGTTGTGAAAAGCTGCTGAAAACCTATGAGACAGCAACAGAGTCTGCATTGCAAAATCTAAGTGCT  
 TCCAGGATAATTGGACCAATGTAATTCGATGTGAGTGGTGGTCCACATTAAGTCAGCATTTAGAAAT  
 GCTCAAATGGAACAACAGTTTCAGCAAAAGACAGCTGTGTGGGGGGACAGGAAGTGAAGCAAGGAATA  
 GATCCGAAAAGATAACAGAGGAATCCATGTCAGTGAACGCCCTCACATGGAAAAGGATTTTCCCGACCTG  
 CTAGACCAGCAAATCGTCGTCTCCCTCCAGATGGGCATCCAGATCTCCATCTGCACCCCTGCCTTGCG  
 GAGAACTACCCACAACATAACATTTCTCTGCGATCCGAAGCATTGATGGTT

**ACGCGT**ACGCGGCCGCTCGAG – GFP Tag – GTTTAA

**Protein Sequence:** >RG203723 representing NM\_014702  
 Red=Cloning site Green=Tags(s)

MDLHKQWENTETNWHKEKMELLDQFDNERKEWESQWKIMQKKIEELCREVKLWRKININERAKIIDLYHE  
 KTIPEKVIESPYPDLGQSEFIRTNHKDGLRKENKREQSLVSGGNQMCKEQKATKKSQVGLDPLATDN  
 QKECEAWPDLRTSEEDSKSCSGALSTALEELAKVSEELCSFQEEIRKRSNHRMRKSDSFLQEMPVNTNIP  
 HGDPMINNDQCILPISLEKEKQKNRKNLSCTNVLQSNSTKCGIDTIDLKRNTPPVPPRSTSRNFPSS  
 DSEQAYERWKERLDHNSWVPHEGRSKRNYNPHFPLRQQEMSMLYPNEGKTSKDGIIIFSSLVPEVKIDSKP  
 PSNEDVGLSMWSCDIGIGAKRSPSTSWFQKTCSTPSNPKYEMVIPDHPAKSHPDLHVSNDCSSVAESS  
 PLRNFSCGFERTTRNEKLAAKTDEFNRTVFRTDRNCQAIQQNHSCSKSSEDLKPCDTSSTHTGSISQNSD  
 VSGIWKNAHMPVPMENVPDNPSTTKSTTGLVRQMQLSPRSYRNLHEHDWRPSNLSGRPRADPRSNY  
 GVVEKLLKTYETATESALQNSKCFQDNWTKCNSDVSGGATLSQHLEMLQMEQQFQKQKTAVWGGQEVKQGI  
 DPKKITEESMSVNASHGKGFSRPAPANRRLPSRWASRSPSAPPALRRTTHNYTISLRSEALMV

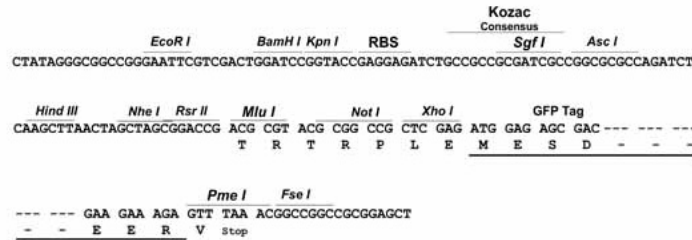
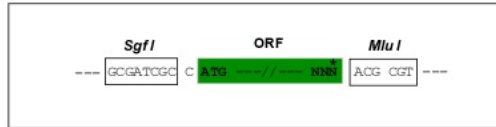
TRTRPLE - GFP Tag - V

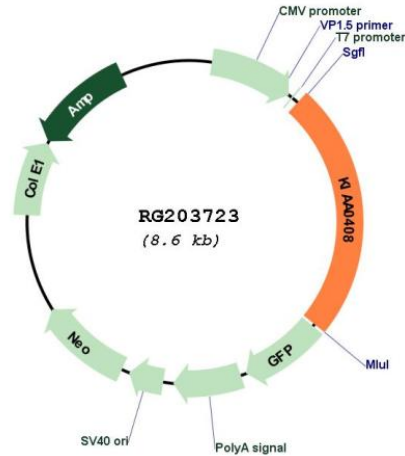
**Restriction Sites:**

SgfI-MluI

**Cloning Scheme:**

Cloning sites used for ORF Shuttling:



**Plasmid Map:**


**ACCN:** NM\_014702

**ORF Size:** 2082 bp

**OTI Disclaimer:** The molecular sequence of this clone aligns with the gene accession number as a point of reference only. However, individual transcript sequences of the same gene can differ through naturally occurring variations (e.g. polymorphisms), each with its own valid existence. This clone is substantially in agreement with the reference, but a complete review of all prevailing variants is recommended prior to use. [More info](#)

**OTI Annotation:** This clone was engineered to express the complete ORF with an expression tag. Expression varies depending on the nature of the gene.

**Components:** The ORF clone is ion-exchange column purified and shipped in a 2D barcoded Matrix tube containing 10ug of transfection-ready, dried plasmid DNA (reconstitute with 100 ul of water).

**Reconstitution Method:**

1. Centrifuge at 5,000xg for 5min.
2. Carefully open the tube and add 100ul of sterile water to dissolve the DNA.
3. Close the tube and incubate for 10 minutes at room temperature.
4. Briefly vortex the tube and then do a quick spin (less than 5000xg) to concentrate the liquid at the bottom.
5. Store the suspended plasmid at -20°C. The DNA is stable for at least one year from date of shipping when stored at -20°C.

**RefSeq:** [NM\\_014702.3](#), [NP\\_055517.3](#)

RefSeq Size: 6449 bp  
RefSeq ORF: 2085 bp  
Locus ID: 9729  
UniProt ID: [Q6ZU52](#)  
Cytogenetics: 6q22.33