

Product datasheet for **RG203710**

TTYH1 (NM_001005367) Human Tagged ORF Clone

Product data:

| | |
|---------------------------|--|
| Product Type: | Expression Plasmids |
| Product Name: | TTYH1 (NM_001005367) Human Tagged ORF Clone |
| Tag: | TurboGFP |
| Symbol: | TTYH1 |
| Mammalian Cell Selection: | Neomycin |
| Vector: | pCMV6-AC-GFP (PS100010) |
| E. coli Selection: | Ampicillin (100 ug/mL) |
| ORF Nucleotide Sequence: | >RG203710 representing NM_001005367 Red=Cloning site Blue=ORF Green=Tags(s) |

TTTTGTAATACGACTCACTATAGGGCGGCCGGGAATTCGTCGACTGGATCCGGTACCGAGGAGATCTGCCGCC**CGATCGCC**

ATGGGGGCGCCCCGGGCTACCGGCCCTCAGCTTGGGTGCATCTCCTCCACCAGCTGCCCGCGCCGACT
TCCAGCTCCGCCCGGTGCCCAGCGTTTTTCGCGCCCCAAGAGCAGGAATACCAGCAGGCCTTGTGCTGGT
GGCGGCCCTGGCGGGCCTGGGCTTGGGCTGAGCCTCATTTTCATCGCTGTCTACCTCATCCGCTTCTGC
TGCTGCCGGCCCCGAGCCCCCGGGTCCAAGATCCCCGCCCCGGGGAGGCTGCGTCCACCTGGAGTGA
GCATTGTCGCCCTTCTCGCCGGCTGCACTGGCATTGGCATCGGTTTCTATGGCAACAGTGAGACCAGTGA
TGGGGTGTCCCAGCTCAGCTCTGCGCTGCTGCAGCCAACCACACTCAGCACCATTGACCACCTGGTG
TTGGAGACGCTGGAGAGGCTGGGCGAGGCGGTGAGGACAGAGCTGACCACCCTGGAGGAGGTGCTCGAGC
CGCGCACGGAGCTGGTGGCTGCCGCCGAGGGGCTCGACGGCAGGCGGAGGCTGCGGCCAGCAGCTGCA
GGGGCTGGCCTTCTGGCAGGGAGTGCCCTGAGCCCCCTGCAGGTGGTGAAAAATGTGTCCTTTGTGGAG
GAGTACAGGTGGCTGGCCTACGTCCTCTGCTGCTCCTGGAGCTGCTGGTCTGCCTCTTACCCTCTGG
GCCTGGGAAGCAGAGCAAGTGGCTGGTATCGTGATGACAGTCATGAGTCTCCTGGTTCTCGTCTGAG
CTGGGGCTCCATGGCCTGGAGGCAGCCACGGCCGTGGGCTCAGTGACTTCTGCTCCAATCCAGACCT
TATGTTCTGAACCTGACCAGGAGGAGACAGGGCTCAGCTCAGACATCCTGAGCTATTATCTCCTCTGCA
ACCGGGCCGTCTCCAACCCCTTCCAACAGAGGCTGACTCTGTCCCAGCGAGCTCTGGCCAACATCCACTC
CCAGCTGCTGGGCTGGAGCGAGAAGCTGTGCCTCAGTCCCTTCCAGCGAGAAGCCTCTGCTGTCTTG
GAGGAGACTCTGAATGTGACAGAAGAAATTTCCACCAGTTGGTGGCACTGCTACTGCCCGAGCCTGC
ACAAGGACTATGGTGCAGCCCTGCGGGGCTGTGCGAAGACGCCCTGGAAGGCCTGCTCTTCTGCTACT
CTTCTCCTGCTGCTGCAAGGAGCGTGCCACTGCCCTTGCAGCCTGCCCGAGCCTGGGCCCTTCTC
CCACCCAGGAATCCAAGCGCTTTGTGCAAGTGGCAGTCTCTATCTGAGCCCTCTCCCGGCTGGACTGG
AGCCTGGCTCCCCTTTCGTTCCCTCCCTGGCTGCCGGAGGAGACCCAC

ACGCGTACGCGGCCGCTCGAG - GFP Tag - GTTTAA



[View online >](#)

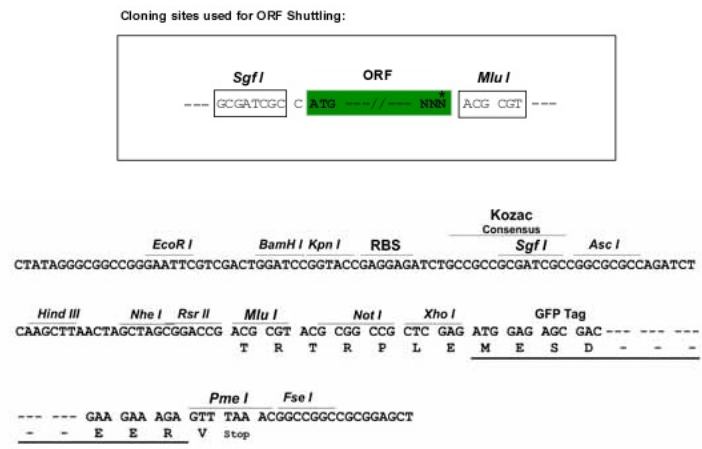
Protein Sequence: >RG203710 representing NM_001005367
Red=Cloning site Green=Tags(s)

MGAPPGYRPSAWVHLLHQLPRADFQLRPVPSVFAPQEYEQQALLLVAALAGLGLGLSLIFIAVYLIRFC
 CCRPPEPPGSKIPSPGGCVTWSCIVALLAGCTGIGIGFYGNSETSDGVSQSSALLHANHTLSTIDHLV
 LETVERLGEAVRTELTTLEEVLEPRTLVAAARGARRQAEAAAQQLQGLAFWQGVPLSPLQVAENVSFVE
 EYRWLAYVLLLLLELLVCLFTLLGLAKQSKWLVI VMTVMSLLVLVLSWGSMGLEAATAVGLSDFCSNPDP
 YVLNLTQEETGLSSDILSYLLCNRAVSNPFQQRLLTSQRALANIHSQLLGLEREAVPQFPPSAQKPLL
 EETLNVTEGNFHQLVALLHCRSLHKDYGAALRGLCEDALEGLLFLLLFLLSAGALATALCSLPRAWALF
 PPRNPSALCSGSRLSEPLL PABLEPGSPLRSFPGCRRRPH

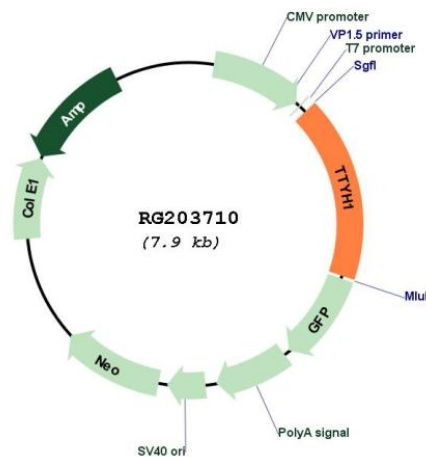
TRTRPLE - GFP Tag - V

Restriction Sites: SgfI-MluI

Cloning Scheme:



Plasmid Map:



| | |
|------------------------|---|
| ACCN: | NM_001005367 |
| ORF Size: | 1380 bp |
| OTI Disclaimer: | The molecular sequence of this clone aligns with the gene accession number as a point of reference only. However, individual transcript sequences of the same gene can differ through naturally occurring variations (e.g. polymorphisms), each with its own valid existence. This clone is substantially in agreement with the reference, but a complete review of all prevailing variants is recommended prior to use. More info |
| OTI Annotation: | This clone was engineered to express the complete ORF with an expression tag. Expression varies depending on the nature of the gene. |
| Components: | The ORF clone is ion-exchange column purified and shipped in a 2D barcoded Matrix tube containing 10ug of transfection-ready, dried plasmid DNA (reconstitute with 100 ul of water). |
| Reconstitution Method: | <ol style="list-style-type: none">1. Centrifuge at 5,000xg for 5min.2. Carefully open the tube and add 100ul of sterile water to dissolve the DNA.3. Close the tube and incubate for 10 minutes at room temperature.4. Briefly vortex the tube and then do a quick spin (less than 5000xg) to concentrate the liquid at the bottom.5. Store the suspended plasmid at -20°C. The DNA is stable for at least one year from date of shipping when stored at -20°C. |
| RefSeq: | NM_001005367.3 |
| RefSeq Size: | 1875 bp |
| RefSeq ORF: | 1383 bp |
| Locus ID: | 57348 |
| UniProt ID: | Q9H313 |
| Cytogenetics: | 19q13.42 |
| Protein Families: | Ion Channels: Other, Transmembrane |
| Gene Summary: | This gene encodes a member of the tweety family of proteins. Members of this family function as chloride anion channels. The encoded protein functions as a calcium(2+)-independent, volume-sensitive large conductance chloride(-) channel. Three transcript variants encoding distinct isoforms have been identified for this gene. [provided by RefSeq, Jan 2011] |