

## Product datasheet for **RG203705**

### **CYPIVF11 (CYP4F11) (NM\_021187) Human Tagged ORF Clone**

#### **Product data:**

Product Type:	Expression Plasmids
Product Name:	CYPIVF11 (CYP4F11) (NM_021187) Human Tagged ORF Clone
Tag:	TurboGFP
Symbol:	CYPIVF11
Synonyms:	CYPIVF11
Mammalian Cell Selection:	Neomycin
Vector:	pCMV6-AC-GFP (PS100010)
E. coli Selection:	Ampicillin (100 ug/mL)



[View online »](#)

**ORF Nucleotide Sequence:**

>RG203705 representing NM\_021187  
 Red=Cloning site Blue=ORF Green=Tags(s)

TTTTGTAATACGACTCACTATAGGGCGGCCGGAATTCGTCGACTGGATCCGGTACCGAGGAGATCTGCC  
 GCC**GCGATCGCC**

ATGCCGACGTGAGCCTGTCTGGCTGGGCTCGGGCCGTGGCAGCATCCCCGTGGCTGCTTCTGCTGC  
 TGGTTGGGGCTCCTGGCTCCTGGCCCGCTGGCCTGGACCTACACCTTCTATGACAACTGCCGCCG  
 CCTCCAGTGTTCCTCAACCCCGAAACAGAAGTGGTTTTGGGACACCAGGGCTTGAAGTTGTGGTGGGTC  
 GAAGAGGGCATGAAGACATTGACCCAGCTGGTACCACATATCCCCAGGGCTTTAAGTTGTGGTGGGTC  
 CTACCTTCCCCCTCCTATTTTATGCCACCCTGACATCATCCGGCCTATCACCAGTGCCTCAGCTGCTGT  
 CGCACCAAGGATATGATTTTCTATGGCTTCTGAAGCCCTGGCTGGGGATGGGCTCCTGCTGAGTGGT  
 GGTGACAAAGTGGAGCCGCCACCGTCGGATGTTGACGCCTGCCTCCATTTCAACATCTTGAAGCCTTATA  
 TGAAGATTTTCAACAAGAGTGTGAACATCATGCACGACAAGTGGCAGCGCTGGCCTCAGAGGGCAGCGC  
 CAGACTGGACATGTTTGAACACATCAGCCTCATGACCTTGACAGTCTGCAGAAATGTGTCTTCAGCTTT  
 GAAAGCAATTGTCAAGGAGAAGCCAGTGAATATATTGCCGCCATCTGGAGCTCAGTGCCTTTGTAGAAA  
 AGAGAAACCAGCAGATTCTCTTGACACCGACTTCTGTATTATCTCACTCCTGATGGGCAGCGCTCCG  
 CAGGGCTGCCACCTGGTGCACGACTTACAGATGCCGTATCCAGGAGCGGCCGCCACCTCCCCACT  
 CAGGGTATTGATGATTTCTCAAGAACAAGGCAAGTCCAAGACTTTAGACTTCAATTGATGTCTTCTGC  
 TGAGCAAGGATGAAGATGGGAAGGAATTGTCTGATGAGGACATAAGAGCAGAAGCTGACACCTTCATGTT  
 TGAGGGCCATGACACTACAGCCAGTGGTCTCTCTGGTCTTATACCACCTTGAAGCACCAGAATAC  
 CAGGAACAGTCCCGCAAGAAGTCAAGAGCTTCTGAAGGACCGTGAACCTATAGAGATTTGAATGGGACG  
 ACCTGGCCAGCTGCCCTTCTGACCATGTGCATTAAGGAGACCTGCGGTTGCATCCCCAGTCCCGGT  
 CATCTCCCGATGTTGACAGCAGGACTTTGTGCTCCCAGACGGCCGCTCATCCCCAAAGGCATTGTCTGC  
 CTCATCAATATTATCGGGATCCATTACAACCAACTGTGTGCCAGACCTGAGGTCTACGACCCCTTCC  
 GTTTCAACCAAGAGAACATCAAGGAGAGGTACCTCTGGCTTTTATTCCCTTCTCGGCAGGGCCAGAAA  
 CTGCATCGGGCAGGCGTTCGCCATGGCTGAGATGAAGGTGGTCTGGCGCTCACGCTGCTGCACTTCCGC  
 ATCCTGCCGACCCACTGAACCCCGCAGGAAACCCGAGCTGATATTGCGCGCAGAGGTGGACTTTGGC  
 TCGGGTGGAGCCCTGGGTGCCAACTCACAG

**ACGCGTACGCGGCCGCTCGAG** – GFP Tag – GTTTAA

**Protein Sequence:**

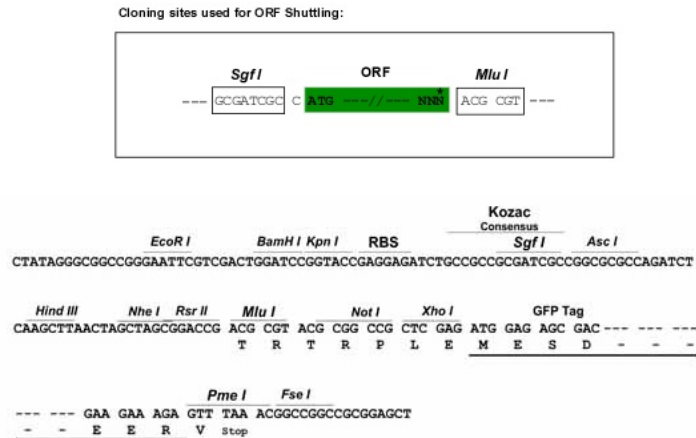
>RG203705 representing NM\_021187  
 Red=Cloning site Green=Tags(s)

MPQLSLSWLGLGPVAASPWLLLLLVGGSWLLARVLAWTYTFYDNCRRLLQCFPPKQNWFWGHQGLVTPT  
 EEGMKTLLQLVTTYYPQGFKLWLGPTFPLLLILCHPDIIRPITSASAAPKMDMIFYGFLKPWLDGLLLLSG  
 GDKWSRHRMLTPAFHFNILKPYMKIFNKSVNIMHDKWQRLASEGSARLDMFEHISLMTLDSLQKCVFSF  
 ESNCQEKPSEYIAAILELSAFVEKRNQQILLHTDFLYLTPDQGRFRACHLVHDFDAVIQERRRLPT  
 QGIDDFLKNKAKSKTLDLFDVLLLSKDEDGKELSDERAEADTFMFEHDTTASGLSWLYHLAKHPEY  
 QEQRQEVQELLKDREPIEIEWDDLAQLPFLTMCIKESLRLHPPVPVIRSCTQDFVLPDGRVIPKGIVC  
 LINIIGIHYNPTVWPDPEVYDPFRFNQENIKERSPLAFIPFSAGPRNCIGQAFAMAEMKVVLLALTLHFR  
 ILPTHTEPRRPELILRAEGLWLRVEPLGANSQ

**TRTRPLE** – GFP Tag – V

**Restriction Sites:**

Sgfl-MluI

**Cloning Scheme:**


**ACCN:** NM\_021187

**ORF Size:** 1572 bp

**OTI Disclaimer:** The molecular sequence of this clone aligns with the gene accession number as a point of reference only. However, individual transcript sequences of the same gene can differ through naturally occurring variations (e.g. polymorphisms), each with its own valid existence. This clone is substantially in agreement with the reference, but a complete review of all prevailing variants is recommended prior to use. [More info](#)

**OTI Annotation:** This clone was engineered to express the complete ORF with an expression tag. Expression varies depending on the nature of the gene.

**Components:** The ORF clone is ion-exchange column purified and shipped in a 2D barcoded Matrix tube containing 10ug of transfection-ready, dried plasmid DNA (reconstitute with 100 ul of water).

**Reconstitution Method:**

1. Centrifuge at 5,000xg for 5min.
2. Carefully open the tube and add 100ul of sterile water to dissolve the DNA.
3. Close the tube and incubate for 10 minutes at room temperature.
4. Briefly vortex the tube and then do a quick spin (less than 5000xg) to concentrate the liquid at the bottom.
5. Store the suspended plasmid at -20°C. The DNA is stable for at least one year from date of shipping when stored at -20°C.

**RefSeq:** [NM\\_021187.2](#), [NP\\_067010.2](#)

**RefSeq Size:** 3044 bp

**RefSeq ORF:** 1575 bp

**Locus ID:** 57834

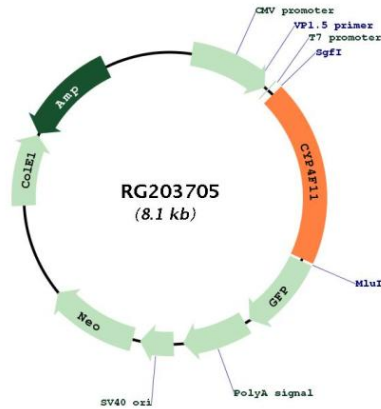
**UniProt ID:** [Q9HBI6](#)

**Cytogenetics:** 19p13.12

**Protein Families:** Druggable Genome, P450, Transmembrane

**Gene Summary:** This gene, CYP4F11, encodes a member of the cytochrome P450 superfamily of enzymes. The cytochrome P450 proteins are monooxygenases which catalyze many reactions involved in drug metabolism and synthesis of cholesterol, steroids and other lipids. This gene is part of a cluster of cytochrome P450 genes on chromosome 19. Another member of this family, CYP4F2, is approximately 16 kb away. Alternatively spliced transcript variants encoding the same protein have been found for this gene. [provided by RefSeq, Jul 2008]

**Product images:**



Circular map for RG203705