

Product datasheet for **RG203681**

GRAMD2B (NM_023927) Human Tagged ORF Clone

Product data:

Product Type:	Expression Plasmids
Product Name:	GRAMD2B (NM_023927) Human Tagged ORF Clone
Tag:	TurboGFP
Symbol:	GRAMD2B
Synonyms:	GRAMD3; NS3TP2
Mammalian Cell Selection:	Neomycin
Vector:	pCMV6-AC-GFP (PS100010)
E. coli Selection:	Ampicillin (100 ug/mL)
ORF Nucleotide Sequence:	>RG203681 representing NM_023927 Red=Cloning site Blue=ORF Green=Tags(s)

TTTTGTAATACGACTCACTATAGGGCGCCGGGAATTCGTCGACTGGATCCGGTACCGAGGAGATCTGCC
GCC**CGATCGCC**

ATGACTGAACTACAGCAAGATGTGGAAGACACAAAGCCTGCGAAAAGTGCTCGGGAAGAGGGAGAGCAAAC
TTGGCTCAGCCACTCAGAGGCTGAGAATGGTGTGGAGGAGAAAAAGAAAGCCTGCGAGTGCACCAACAGC
CCAATCCCCTACCCATCTGTGGAGGCGGACTCCCAGACCAGAAGAAAATCATTAGCCTATGGTCAAAA
TCCAGTTTGTGGTGCCTCTTTAGCAAGTGATAAGAACGACTGTAAAACAGAAAGCAAAAATGACCCTA
AGACTGAAAGAAAAAGTCTTCATCTTCCAGCCAGTACAAGCCAATATGCACTTTCACAAGTTGTTTCT
TAGTGTCCCAACGAGGAACCACTGAAGCAAAGCTTTACCTGTGCTCTACAGAAAGAAATACTATACCAA
GGAAAGCTCTTTGTATCAGAAAAGTGGATTTGTTTTCATTCCAAAAGTCTTTGAAAAGACACAAAGATCT
CTATTCAGCTTTCTCGGTAACCCATAAAGAAAACAAAAGTCTCTTCTAGTGCCAAACGCCCTGAT
CATAGCAACAGTCACAGACAGGTACATATTTGTCTCCTTACTCTCCAGAGATTCAACTTACAAACTACTA
AAATCTGTGTGTGGACACTTAGAAAATACAAGTGTGGTAACAGTCCCAATCCATCTTCTGCTGAAAACA
GTTTCCGAGCAGACCCGCTTCATCTCTGCCTCTGGATTTCAATGATGAATCTCAGATCTGGATGGAGT
GGTTCACAAAGAAGCAAGACATGGAAGGATATAGCAGTCTGGTTCTCAAACCTCTGAATCTGAGAAC
TCTCGAGATTTCCATGCGACAGAATCCCAAACAGTTCTGAATGTCTCAAGGGAGAAAGCAAGCCAACTC
GGCAGATGCCCATGTGAACAGAGTACCTGAAGGAAAAGCCAAGAGTCTCCCTGTACAGGGTCTGTGAGA
AACTGTTGGAATCTTACATAAAGTCAAGTCTCAGAAAATGTCCGATGCTTACCATATTCTTATATTCTAT
GCAATTGTTGTCTGTGCACTAATCATCTCGACCTTCTACATGAGATACAGAATTAATACTCTGGAGGAGC
AGCTGGGGTTACTAACCTCCATTGTGGACCCATAATACTGAACAGGCAGCACCATCTGGCCTGAGGTC
ACAAGTACAATTCAATGTGGAGTTCTCTGTCAAGAGCTTACAGCTAACATAGTGAATTAGAAAAGATA
CAAAATAACTTACAGAAGTTGCTTGAGAATGGTGAC

ACGCGTACGCGGCCGCTCGAG - GFP Tag - GTTTAA



[View online >](#)

Protein Sequence: >RG203681 representing NM_023927
Red=Cloning site Green=Tags(s)

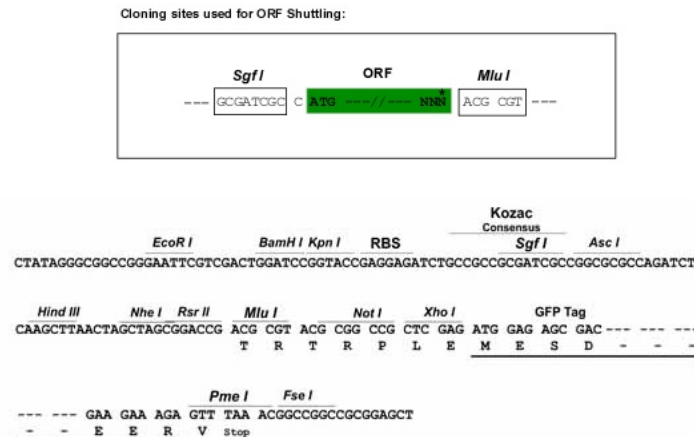
MTELQQDVEDTKPAKVLGKRESKLGSAHSEAENGVEEKKKACRSPTAQSPTPSVEADSPDQKKIISLWSK
 SSFDGASLASDKNDCKTESKNDPKTERKKSSSSSQYKANMHFKLFLSVPTEEPLKQSFTCALQKEILYQ
 GKLFVSENWICFHSKVF GKDTKISIPAFSVTLIKKTKTALLVPNALIIATVTDRIYFVSLLSRDSTYKLL
 KSVCGHLENTSVGNPNPSSAENSFRADRPSSLPLDFNDEFSDLGQVQRRQDMEGYSSSGSQTPESEN
 SRDFHATESQTVLNVSKGEAKPTRADAHVNRVPEGKAKSLPVQGLSETVGILHKVKSQKCPMLHHILIFY
 AIVVICALIISTFYMYRIRINTLEEQLGLLTSIVDTHNTEQAAPSGLRSQVQFNVEVLCQELTANIVKLEKI
 QNNLQKLENGD

TRTRPLE - GFP Tag - V

Restriction Sites:

SgfI-MluI

Cloning Scheme:



ACCN: NM_023927

ORF Size: 1296 bp

OTI Disclaimer: The molecular sequence of this clone aligns with the gene accession number as a point of reference only. However, individual transcript sequences of the same gene can differ through naturally occurring variations (e.g. polymorphisms), each with its own valid existence. This clone is substantially in agreement with the reference, but a complete review of all prevailing variants is recommended prior to use. [More info](#)

OTI Annotation: This clone was engineered to express the complete ORF with an expression tag. Expression varies depending on the nature of the gene.

Components: The ORF clone is ion-exchange column purified and shipped in a 2D barcoded Matrix tube containing 10ug of transfection-ready, dried plasmid DNA (reconstitute with 100 ul of water).

Reconstitution Method:

1. Centrifuge at 5,000xg for 5min.
2. Carefully open the tube and add 100ul of sterile water to dissolve the DNA.
3. Close the tube and incubate for 10 minutes at room temperature.
4. Briefly vortex the tube and then do a quick spin (less than 5000xg) to concentrate the liquid at the bottom.
5. Store the suspended plasmid at -20°C. The DNA is stable for at least one year from date of shipping when stored at -20°C.

RefSeq: [NM_023927.4](#)

RefSeq Size: 2912 bp

RefSeq ORF: 1299 bp

Locus ID: 65983

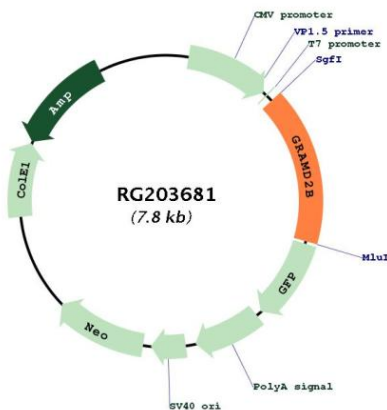
UniProt ID: [Q96HH9](#)

Cytogenetics: 5q23.2

Domains: GRAM

Protein Families: Transmembrane

Product images:



Circular map for RG203681