

Product datasheet for **RG203678**

C14orf169 (NM_024644) Human Tagged ORF Clone

Product data:

Product Type:	Expression Plasmids
Product Name:	C14orf169 (NM_024644) Human Tagged ORF Clone
Tag:	TurboGFP
Symbol:	C14orf169
Synonyms:	C14orf169; hsNO66; JMJD9; MAPJD; NO66; ROX; URLC2
Mammalian Cell Selection:	Neomycin
Vector:	pCMV6-AC-GFP (PS100010)
E. coli Selection:	Ampicillin (100 ug/mL)



[View online »](#)

ORF Nucleotide Sequence:

>RG203678 representing NM_024644
 Red=Cloning site Blue=ORF Green=Tags(s)

TTTTGTAATACGACTCACTATAGGGCGGCCGGAATTCGTCGACTGGATCCGGTACCGAGGAGATCTGCC
 GCC**CGATCGCC**

ATGGATGGGCTCCAGGCCAGTGCAGGGCGTTGAGGCGGGCGGCCGAAGCGCCGGCGCAAGCCCCAGC
 CACACAGCGGGTCGGTCCGTCCTGGCCCTGCCCTTGGAGTCCAGGAAGATACGAAAGCAGCTGCGAAGTGTGT
 ATCCCGCATGGCAGCGCTGAGGACGCAGACGCTGCCTAGCGAGAAGTCCGAGGAATCGAGGGTGGAGTCG
 ACGGCCGACGACCTGGGGGACGCGCTACCCGGTGGGGCGCGGTGGCGGCCGTCGCCGACGACGCCCGC
 GAGAGCCATACGGCCACCTGGGGCCGACAGAGCTGCTGGAGGCCTCGCCCGCCGCGCTCCCTGCAGAC
 CCCGTGCGCGCGCTGGTCCCGCTTCCGCGCCGCCCGCGCGCTGGTGGAGGTGCCCGCCGCGCCGGT
 CGGGTGGTGGAGACCTCGGCCCTGCTGTGACCCGCAACACTTAGCGGCCGTCAGTCCGCGGGGCC
 CTGCGACGGCGTGGGGCCGAGGTGGATAACACGGGTGGGAGCCGGCCTGGGACTCCCGCTGCGGGC
 CGTCTTGCCGAGCTGAACCGCATCCCCAGCAGCCGGCGCGAGCGGCCCGCCTCTTTGAGTGGCTCATC
 GCGCCATGCCGACAGATCACTTTTACCGCGCCTATGGGAGCGCGAGGGGTGCTGGTGGCGCGGAGG
 ACCACACCTACTACCAGGACTTTTCTCTACCGCTGACCTGGATTTCGATGCTGCGCAACGAGGAGGTGCA
 GTTCGGCCAGCATTTGGACGCGGCTCGCTACATCAACGGACGACGCGAGACCCTGAACCCACCCGGCCG
 GCGCTGCCCGCCCGCGTGGTCCCTGTACCAGGCCGGTGTCCCTGCGTCTCCTGTCCGAGGCTT
 TCTCTACTACTGTGTGGCAGTTTTTGGCTGTGCTTCAAGAGCAGTTTGAAGCATGGCAGGCTCCAACGT
 TTACCTCAGCCCCCTAACTCGCAGGGCTTTGCCCCACTACGACGACATCGAGGCCTTCGTGCTGCAG
 CTGGAAGGTAGGAAACTTGGCGTGTATACCGACCCGAGTCCAACCGAGGAAGTGGCTGACATCCA
 GCCCAACTTCAGTCAGGACGACCTCGGTGAGCCGGTGTGCAGACCGTGTGGAACCTGGAGATTTGCT
 GTATTTTCTCGGGCTTCACTACCAAGCTGAATGCCAGGATGGAGTCCACTCTCTGCACCTCACCTTG
 TCCACGTACCAGCGCAATACCTGGGGTACTTCTTAGAGGCCATACTGCCTCTGGCAGTGCAGGCTGCAA
 TGGAAGAAAATGTGGAGTTTCGGAGGGTCTGCCCGAGACTTTCATGGATTACATGGGGCCAGCATT
 AGATTCTAAGGATCCGCGAAGAACCCTTTCATGGAGAAGGTGCGGGTCTTGGTTGCCCGCTGGGACAC
 TTTGCTCTGTTGATGCTGTGGCCGACCAGCGAGCCAAAGACTTCATTACGATTCTCTGCCCTGTTT
 TGACTGATAGGGAGAGGGCACTAAGTGTTCACGGCTTCAATTCGCTGGGAGGCTGGAGAACCTGTAA
 CGTGGGGGCCAGTTGACAACAGAAACAGAAGTCCATATGCTTCAGGATGGGATAGCTCGCTGGTGGGT
 GAGGGGGCCATTGTTTCTCTATTACACAGTGGAAAACCTCCCGTGTGTATCATCTGGAAGAACCAAGT
 GCTTGGAAATATACCCCAAGCAAGCTGATGCCATGGAAGTGTGCTTGGTCTTATCCAGAGTTTGTGAG
 AGTGGGGGACCTGCCCTGTGACAGTGTGGAGGACCAGCTGTCCTTGGCAACCACGTTGTATGATAAGGG
 CTGCTGCTCACTAAGATGCCTCTAGCCCTAAAT

ACGCGTACGCGGCCGCTCGAG - GFP Tag - GTTTAA

Protein Sequence:

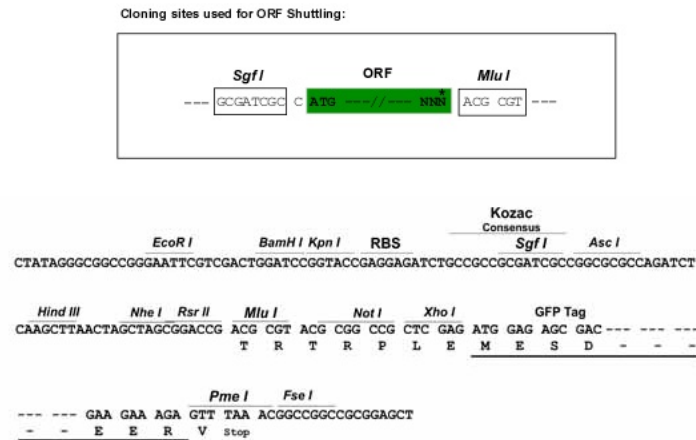
>RG203678 representing NM_024644
 Red=Cloning site Green=Tags(s)

MDGLQASAGPLRRGRPKRRRKPQPHSGSVLALPLRSRKIRKQLRSVVSMAALRTQTLPSSENSESRVES
 TADDLGDALPGGAAVAAPDAARREPYGHLGPAELLEASPAARSLQTPSARLVPASAPPARLVEVPAAPV
 RVVETSALLCTAQHLAAVQSSGAPATASGPQVDNTGGEPAWSPLRRVLAELNRIPSSRRRAARLFEWLI
 APMPDPHFYRRLWEREAVLVRQDHTYYQGLFSTADLDSMLRNEEVQFGQHLDAARYINGRRETLPNPPGR
 ALPAAAWSLYQAGCSLRLCPQAFSTTVWQFLAVLQEQFGSMAGSNVYLTPPNSQGFAPHYDDIEAFVLQ
 LEGRKLWRVYRPRVPTTEELALTSSPNFSQDDLGEPLVLTVLEPGDLLYFPRGFIHQAECDQGVHSLHLTL
 STYQRNTWGFLEAILPLAVQAAMEENVEFRRLPRDFMDYMQAHSKDPRTAFMEKVRVLAARLGH
 FAPVDAVADQRAKDFIHDSLPPVLTDRERALSIVYGLPIRWEAGEPVNVGAQLTTEVHMLQDGIARLVG
 EGGHFLYYTVENSRYVHLEPKCLEIYPQQADAMELLLSYPEFVRVGDLPDSDVEDQLSLATTLVYDKG
 LLLTKMPLALN

TRTRPLE - GFP Tag - V

Restriction Sites: SgfI-MluI

Cloning Scheme:



ACCN: NM_024644

ORF Size: 1923 bp

OTI Disclaimer: The molecular sequence of this clone aligns with the gene accession number as a point of reference only. However, individual transcript sequences of the same gene can differ through naturally occurring variations (e.g. polymorphisms), each with its own valid existence. This clone is substantially in agreement with the reference, but a complete review of all prevailing variants is recommended prior to use. [More info](#)

OTI Annotation: This clone was engineered to express the complete ORF with an expression tag. Expression varies depending on the nature of the gene.

Components: The ORF clone is ion-exchange column purified and shipped in a 2D barcoded Matrix tube containing 10ug of transfection-ready, dried plasmid DNA (reconstitute with 100 ul of water).

Reconstitution Method:

1. Centrifuge at 5,000xg for 5min.
2. Carefully open the tube and add 100ul of sterile water to dissolve the DNA.
3. Close the tube and incubate for 10 minutes at room temperature.
4. Briefly vortex the tube and then do a quick spin (less than 5000xg) to concentrate the liquid at the bottom.
5. Store the suspended plasmid at -20°C. The DNA is stable for at least one year from date of shipping when stored at -20°C.

RefSeq: [NM_024644.5](#)

RefSeq Size: 2463 bp

RefSeq ORF: 1926 bp

Locus ID: 79697

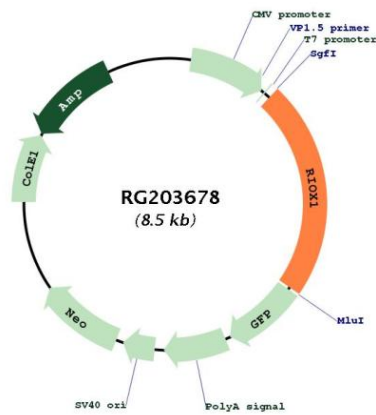
UniProt ID: [Q9H6W3](#)

Cytogenetics: 14q24.3

Protein Families: Druggable Genome

Gene Summary: Oxygenase that can act as both a histone lysine demethylase and a ribosomal histidine hydroxylase. Specifically demethylates 'Lys-4' (H3K4me) and 'Lys-36' (H3K36me) of histone H3, thereby playing a central role in histone code. Preferentially demethylates trimethylated H3 'Lys-4' (H3K4me3) and monomethylated H3 'Lys-4' (H3K4me1) residues, while it has weaker activity for dimethylated H3 'Lys-36' (H3K36me2). Also catalyzes the hydroxylation of 60S ribosomal protein L8 on 'His-216'. Acts as a regulator of osteoblast differentiation via its interaction with SP7/OSX by demethylating H3K4me and H3K36me, thereby inhibiting SP7/OSX-mediated promoter activation (By similarity). May also play a role in ribosome biogenesis and in the replication or remodeling of certain heterochromatic region. Participates in MYC-induced transcriptional activation.[UniProtKB/Swiss-Prot Function]

Product images:



Circular map for RG203678