

Product datasheet for **RG203672**

NABP1 (NM_001031716) Human Tagged ORF Clone

Product data:

Product Type: Expression Plasmids
Product Name: NABP1 (NM_001031716) Human Tagged ORF Clone
Tag: TurboGFP
Symbol: NABP1
Synonyms: OBFC2A; SOSS-B2; SSB2
Mammalian Cell Selection: Neomycin
Vector: pCMV6-AC-GFP (PS100010)
E. coli Selection: Ampicillin (100 ug/mL)
ORF Nucleotide Sequence: >RG203672 representing NM_001031716
 Red=Cloning site Blue=ORF Green=Tags(s)

TTTTGTAATACGACTCACTATAGGGCGGCCGGAATTCGTCGACTGGATCCGGTACCGAGGAGATCTGCC
 GCC**CGATCGCC**

ATGAATAGGGTCAACGACCCACTTATTTTTATAAGAGATATTAAGCCCGACTGAAAACTTAAATGTCG
 TCTTTATTGTCCTGGAGATAGGACGCGTGACCAAAACCAAGACGGCCATGAAGTGAATCGTGCAAAGT
 AGCAGATAAACGGGCAGCATCACTATTTCCGTGTGGGATGAGATCGGAGGTCTTATACAGCCAGGGGAT
 ATTATTCGGTTGACCAGAGGGTATGCATCCATGTGAAAGGATGTCTGACACTTTATACTGGAAGGGGTG
 GTGAACTTCAAAAATTGGGAATTTGTATGGTTTATTCAGAAGTGCCAAATTCAGTGAACCAACCC
 AGATTATCGAGGACAGCAGAACAAGGGGCACAGAGTGAACAGAAGAATAATCCATGAATAGTAATATG
 GGTACAGGTACATTTGGACCAAGTGGGAAATGGTGTTCACACTGGCCCTGAATCAAGGGAACACCAAGTTT
 CACATGCTGGCAGAAGCAATGGCCGGGGACTTATAAATCCACAACCTACAAGGAACAGCTAGTAATCAAAC
 AGTGATGACCACAATAAGTAATGGCAGGGACCCTCGGAGAGCCTTTAAAAGA

AG**CGGACCG**ACGCGTACGCGGCCGCTCGAG - GFP Tag - GTTTAA

Protein Sequence: >RG203672 representing NM_001031716
 Red=Cloning site Green=Tags(s)

MNRVNDPLIFIRDIKPGLKLNLVFIVLEIGRVTKTKDGHEVRSCKVADKTGSITISVWDEIGGLIQPGD
 IIRLTRGYASMWKGLCLTYTGRGGELQKIGFCMVYSEVPNFSEPNPDYRGQQNKG AQSEQKNNMSNM
 GTGTFGPVGVNGVHTGPESREHQF SHAGRSNGRGLINPQLQGTASNQTVMTTISNGRDPRAFKR

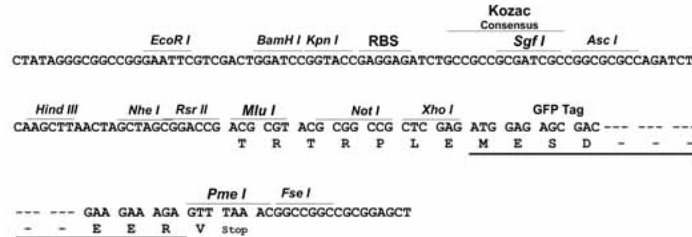
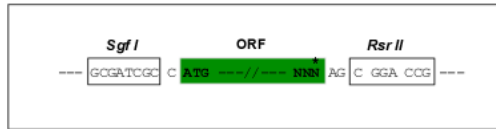
SGP**TRRRLE** - GFP Tag - V

Restriction Sites: Sgfl-RsrII



Cloning Scheme:

Cloning sites used for ORF Shuttling:


ACCN: NM_001031716

ORF Size: 612 bp

OTI Disclaimer: The molecular sequence of this clone aligns with the gene accession number as a point of reference only. However, individual transcript sequences of the same gene can differ through naturally occurring variations (e.g. polymorphisms), each with its own valid existence. This clone is substantially in agreement with the reference, but a complete review of all prevailing variants is recommended prior to use. [More info](#)
OTI Annotation: This clone was engineered to express the complete ORF with an expression tag. Expression varies depending on the nature of the gene.

Components: The ORF clone is ion-exchange column purified and shipped in a 2D barcoded Matrix tube containing 10ug of transfection-ready, dried plasmid DNA (reconstitute with 100 ul of water).

Reconstitution Method:

1. Centrifuge at 5,000xg for 5min.
2. Carefully open the tube and add 100ul of sterile water to dissolve the DNA.
3. Close the tube and incubate for 10 minutes at room temperature.
4. Briefly vortex the tube and then do a quick spin (less than 5000xg) to concentrate the liquid at the bottom.
5. Store the suspended plasmid at -20°C. The DNA is stable for at least one year from date of shipping when stored at -20°C.

RefSeq: [NM_001031716.4](#)
RefSeq Size: 1879 bp

RefSeq ORF: 615 bp

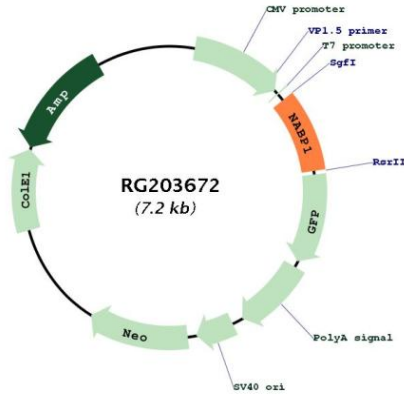
Locus ID: 64859

UniProt ID: [Q96AH0](#)
Cytogenetics: 2q32.3

Gene Summary:

Single-stranded DNA (ssDNA)-binding proteins, such as OBFC2A, are ubiquitous and essential for a variety of DNA metabolic processes, including replication, recombination, and detection and repair of damage (Richard et al., 2008 [PubMed 18449195]).[supplied by OMIM, Jun 2008]

Product images:



Circular map for RG203672