

Product datasheet for **RG203625**

BSCL2 (NM_032667) Human Tagged ORF Clone

Product data:

Product Type: Expression Plasmids
Product Name: BSCL2 (NM_032667) Human Tagged ORF Clone
Tag: TurboGFP
Symbol: BSCL2
Synonyms: GNG3LG; HMN5; HMN5C; PELD; SPG17
Mammalian Cell Selection: Neomycin
Vector: pCMV6-AC-GFP (PS100010)
E. coli Selection: Ampicillin (100 ug/mL)
ORF Nucleotide Sequence: >RG203625 representing NM_032667
 Red=Cloning site Blue=ORF Green=Tags(s)

TTTTGTAATACGACTCACTATAGGGCGGCCGGAATTCGTCGACTGGATCCGGTACCGAGGAGATCTGCC
 GCC**CGATCGCC**

ATGGTCAACGACCCTCCAGTACCTGCCTTACTGTGGGCCAGGAGGTGGGCCAAGTCTTGGCAGGCCGTG
 CCCGCAGGCTGCTGCTGCAGTTTGGGGTCTTCTGCACCATCCTCTTTGCTCTGGGTGTCTGTCTT
 CCTCTATGGCTCCTTCTACTATTCTATATGCCGACAGTCAGCCACCTCAGCCCTGTGCATTTCTACTAC
 AGGACCGACTGTGATTCCTCCACCCTCACTCTGCTCCTCCCTGTTGCCAATGTCTCGTGACTAAGG
 GTGGACGTGATCGGGTGTGATGTATGGACAGCCGTATCGTGTTACCTTAGAGCTTGAGCTGCCAGAGTC
 CCCTGTGAATCAAGATTTGGGCATGTTCTTGGTCACCATTTCTGCTACACCAGAGGTGGCCGAATCATC
 TCCACTTCTTCGCGTTCGGTGTGCTGCATTACCGCTCAGACCTGCTCCAGATGCTGGACACACTGGTCT
 TCTCTAGCCTCCTGCTATTTGGCTTTCAGAGCAGAAGCAGCTGCTGGAGGTGGAACCTCTACGCAGACTA
 TAGAGAGAACCTCGTACGTGCCGACCACTGGAGCGATCATTGAGATCCACAGCAAGCGCATCCAGCTGTAT
 GGAGCCTACCTCCGCATCCACGCGCACTTCACTGGGCTCAGATACCTGCTATACTTCCCGATGACCT
 GCGCCTCATAGGTGTTGCCAGCACTTCACTTCCCTCAGCGTCATCGTGCTCTTACGCTACATGCAGTG
 GGTGTGGGGGGCATCTGGCCCCGACACCGCTTCTCTTTCAGGTTAACATCCGAAAAAGAGACAATTCC
 CGGAAGGAAGTCCAACGAAGGATCTCTGCTCATCAGCCAGTGCCAGGGCCTGAAGGCCAGGAGGAGTCAA
 CTCGCAATCAGATGTTACAGAGGATGGTGAGAGCCCTGAAGATCCCTCAGGGACAGAGGGTCAGCTGTC
 CGAGGAGGAGAAAACCAGATCAGCAGCCCTGAGCGGAGAAGAGGAGCTAGAGCCTGAGGCCAGTGATGGT
 TCAGGCTCCTGGGAAGATGCAGCTTTGCTGACGGAGGCCAACCTGCCTGCTCCTGCTCCTGCTTCTGCTT
 CTGCCCTGTCTAGAGACTCTGGGCAGCTCTGAACCTGCTGGGGTGTCTCCGACAGCGCCCCACCTG
 CTCTAGTTCC

ACGCGTACGCGGCCGCTCGAG - GFP Tag - GTTTAA



[View online »](#)

Protein Sequence: >RG203625 representing NM_032667
 Red=Cloning site Green=Tags(s)

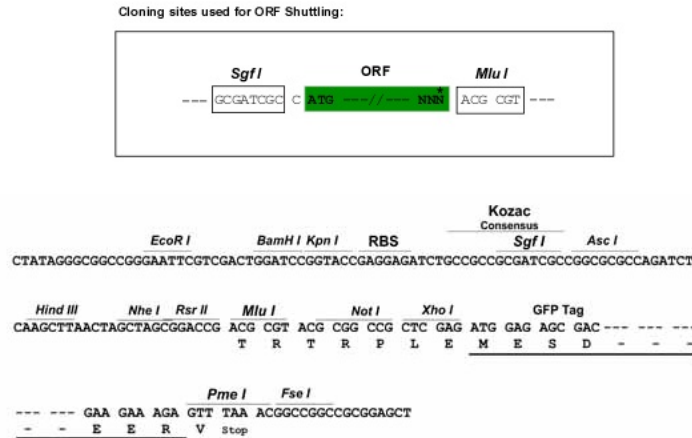
MVNDPPVPALLWAQEVGQVLAGRARRLLLQFGVLFCTILLLLWVSFVLYGFSFYSYMPTVSHLSPVHFYY
 RTDCDSSTTSLCSFPVANVSLTKGGRDRVLMYGQPYRVTLLELELPESPVNQDLGMFLVTISCYTRGGRII
 STSSRSVMLHYRSDLQMLDTLVFSSLLLFGFAEQKQLLEVELYADYRENSYVPTTGAIIEIHSKRIQLY
 GAYLRIHAHFTGLRYLLYNFPMTCAFIGVASNF TFLSVIVLFSYMQVWGGIWRHRSFSLQVNIKRKRDNS
 RKEVQRRISAHQPGAGPEGQEESTPQSDVTEDESPEDPSGTEGQLSEEKPDQQPLSGEEELEPEASDG
 SGSWEDAALLTEANLPAPAPASAPVLETLGSSEPAGGALRQRPTCSSS

TRTRPLE - GFP Tag - V

Restriction Sites:

Sgfl-MluI

Cloning Scheme:



ACCN: NM_032667

ORF Size: 1200 bp

OTI Disclaimer: The molecular sequence of this clone aligns with the gene accession number as a point of reference only. However, individual transcript sequences of the same gene can differ through naturally occurring variations (e.g. polymorphisms), each with its own valid existence. This clone is substantially in agreement with the reference, but a complete review of all prevailing variants is recommended prior to use. [More info](#)

OTI Annotation: This clone was engineered to express the complete ORF with an expression tag. Expression varies depending on the nature of the gene.

Components: The ORF clone is ion-exchange column purified and shipped in a 2D barcoded Matrix tube containing 10ug of transfection-ready, dried plasmid DNA (reconstitute with 100 ul of water).

Reconstitution Method:

1. Centrifuge at 5,000xg for 5min.
2. Carefully open the tube and add 100ul of sterile water to dissolve the DNA.
3. Close the tube and incubate for 10 minutes at room temperature.
4. Briefly vortex the tube and then do a quick spin (less than 5000xg) to concentrate the liquid at the bottom.
5. Store the suspended plasmid at -20°C. The DNA is stable for at least one year from date of shipping when stored at -20°C.

RefSeq: [NM_032667.4](#), [NP_116056.3](#)

RefSeq Size: 1664 bp

RefSeq ORF: 1197 bp

Locus ID: 26580

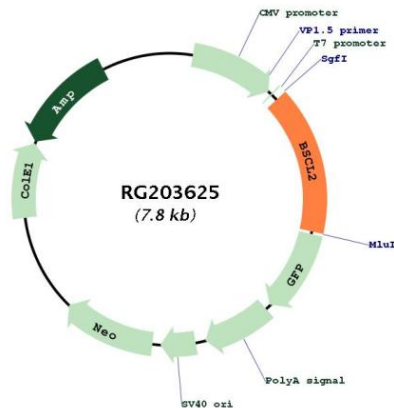
UniProt ID: [Q96G97](#)

Cytogenetics: 11q12.3

Protein Families: Druggable Genome, Transmembrane

Gene Summary: This gene encodes the multi-pass transmembrane protein protein seipin. This protein localizes to the endoplasmic reticulum and may be important for lipid droplet morphology. Mutations in this gene have been associated with congenital generalized lipodystrophy type 2 or Berardinelli-Seip syndrome, a rare autosomal recessive disease characterized by a near absence of adipose tissue and severe insulin resistance. Alternatively spliced transcript variants encoding different isoforms have been found for this gene. Naturally occurring read-through transcription occurs between this locus and the neighboring locus HNRNPUL2 (heterogeneous nuclear ribonucleoprotein U-like 2).[provided by RefSeq, Mar 2011]

Product images:



Circular map for RG203625