

Product datasheet for **RG203538**

RPP25 (NM_017793) Human Tagged ORF Clone

Product data:

Product Type: Expression Plasmids
Product Name: RPP25 (NM_017793) Human Tagged ORF Clone
Tag: TurboGFP
Symbol: RPP25
Mammalian Cell Selection: Neomycin
Vector: pCMV6-AC-GFP (PS100010)
E. coli Selection: Ampicillin (100 ug/mL)
ORF Nucleotide Sequence: >RG203538 representing NM_017793
Red=Cloning site Blue=ORF Green=Tags(s)

GACGTTGTATACGACTCCTATAGGGCGGCCGGGAATTCGTCGACTGGATCCGGTACCGAGGAGATCTGCC
GCCGGCGCGCC

ATGGAGAACTTCCGTAAGGTGCGCTCCGAAGAGGCGCCAGCGGGTGCGGGGCCAGGGAGGCGGCCCGG
GCTCCGGCCCTTCGCAGACCTGGCGCCGGCGCGGTGCACATGCGGGTCAAGGAAGGCAGCAAGATCCG
GAACCTGATGGCCTTCGCCACCGCCAGCATGGCGCAGCCAGCCACGCGGCCATCGTCTTCAGCGGCTGC
GGCCGGGCCACCACAAAACCGTCACGTGCGCCGAGATCCTCAAGCGCCGCTGGCGGGCTGCACCAGG
TCACGCGGCTGCGCTACCGGAGCGTACGGGAGGTGTGGCAGAGCCTCCCGCTGGGCCACGCAGGGTCA
GACGCTGGCGAGCCGGCGCTAGTCTCAGCGTACTTAAGAACGTGCCCGCCTCGCCATCCTACTTTCC
AAGGACGCGTGGATCCGCGACAGCCCGCTACCAGCCCCGAATCCCCATCCTGGTCCCTCGTCCCGC
CAGCCGCGCCAGCGTCCAAGAGGAGCCTAGGGGAACCCGAGCTGGAGAAGGCTCCGCGAAGCGATCGCA
ACCCGAGCCAGGGTTGCGGACGAGGATCAGACGGCC

ACGCGTACGCGGCCGCTCGAG - GFP Tag - GTTTAA

Protein Sequence: >RG203538 representing NM_017793
Red=Cloning site Green=Tags(s)

MENFRKVRSEEAPAGCGAEGGGPGSGPFADLAPGAVHMRVKEGSKIRNLMAFATASMAQPATRAIVFSGC
GRATTKVTCAEILKRRLAGLHQVTRLRYRSVREVMQSLPPGPTQGQTPGEPAAASLVLKNVPLAILLS
KDALDPRQPGYQPPNPHPGPSSPPAAPASKRSLGEPAGEGSAKRSQPEPGVADEDQTA

TRTRPLE - GFP Tag - V

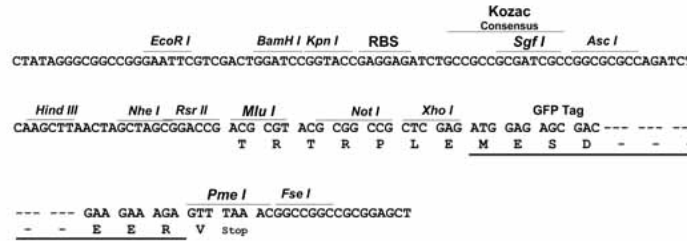
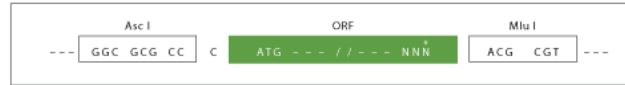
Restriction Sites: AscI-MluI



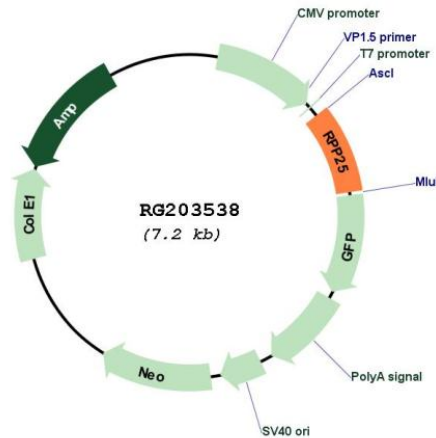
[View online »](#)

Cloning Scheme:

Cloning sites used for ORF Shuttling:



Plasmid Map:



ACCN: NM_017793

ORF Size: 597 bp

OTI Disclaimer: The molecular sequence of this clone aligns with the gene accession number as a point of reference only. However, individual transcript sequences of the same gene can differ through naturally occurring variations (e.g. polymorphisms), each with its own valid existence. This clone is substantially in agreement with the reference, but a complete review of all prevailing variants is recommended prior to use. [More info](#)

OTI Annotation: This clone was engineered to express the complete ORF with an expression tag. Expression varies depending on the nature of the gene.

Components:	The ORF clone is ion-exchange column purified and shipped in a 2D barcoded Matrix tube containing 10ug of transfection-ready, dried plasmid DNA (reconstitute with 100 ul of water).
Reconstitution Method:	<ol style="list-style-type: none">1. Centrifuge at 5,000xg for 5min.2. Carefully open the tube and add 100ul of sterile water to dissolve the DNA.3. Close the tube and incubate for 10 minutes at room temperature.4. Briefly vortex the tube and then do a quick spin (less than 5000xg) to concentrate the liquid at the bottom.5. Store the suspended plasmid at -20°C. The DNA is stable for at least one year from date of shipping when stored at -20°C.
RefSeq:	NM_017793.3
RefSeq Size:	2333 bp
RefSeq ORF:	600 bp
Locus ID:	54913
UniProt ID:	Q9BUL9
Cytogenetics:	15q24.2
Gene Summary:	Component of ribonuclease P, a ribonucleoprotein complex that generates mature tRNA molecules by cleaving their 5'-ends (PubMed:12003489, PubMed:16723659, PubMed:30454648). Also a component of the MRP ribonuclease complex, which cleaves pre-rRNA sequences (PubMed:28115465).[UniProtKB/Swiss-Prot Function]