

## Product datasheet for **RG203534**

### ZNF496 (NM\_032752) Human Tagged ORF Clone

#### Product data:

Product Type:	Expression Plasmids
Product Name:	ZNF496 (NM_032752) Human Tagged ORF Clone
Tag:	TurboGFP
Symbol:	ZNF496
Synonyms:	NIZP1; ZFP496; ZKSCAN17; ZSCAN49
Mammalian Cell Selection:	Neomycin
Vector:	pCMV6-AC-GFP (PS100010)
E. coli Selection:	Ampicillin (100 ug/mL)



[View online »](#)

**ORF Nucleotide Sequence:**

>RG203534 representing NM\_032752  
 Red=Cloning site Blue=ORF Green=Tags(s)

TTTTGTAATACGACTCACTATAGGGCGGCCGGAATTCGTCGACTGGATCCGGTACCGAGGAGATCTGCC  
 GCC**CGGATCGCC**

ATGCCACAGCCCTGTGCCCCGAGTCTTGCTCCGAAGGAAAGTGAGGAGCCCAGGAAAATGAGGAGCC  
 CACCTGGAGAGAACCCTAGCCCCAGGGGAGCTTCCCAGCCCCGAGTCTCTCGCGTCTCTCCGCCG  
 TTTCCGCTACCAGGAGGCGGGCCCGGGAGGCCCTGCAGCGCTCTGGGACCTGTGCGGGGCTGG  
 CTGCGGCCTGAGAGGCACACCAAGGAGCAGATTCTGGAGCTGCTGGTGTGGAGCAGTCTCGCCATCC  
 TGCCCCGGGAGATCCAGAGCTGGGTGCGGGCGCAGGAGCCTGAGAGCGGAGAGCAGGCTGTGGCCGCGT  
 GGAGGCACTGGAACGGGAGCCCGGGAGACCCTGGCAGTGGCTCAAGCACTGTGAAGACCCTGTGGTATT  
 GATGATGGGGACAGCCCTCTGGACCAGGAGCAGGAGCAGTCCCGGTAGAGCCCCACAGCGACCTTGCAA  
 AGAACCAGGATGCCAGCCATAAACCCTGGCACAGTGCCTGGGGCTCCCAAGCAGACCACCAAGCCAGCT  
 CAGCGGGACCCAGTTCTGCAAGATGCTTTCCTTCTCAGGAAGAGAATGTGCGGGACACACAGCAGGTG  
 ACCACCCTCCAGTACCCCCGAGTCGGGTTTCTCCATTCAAGGACATGATTTTATGCTTCTCTGAAGAGG  
 ATTGGTCCCTTCTAGATCCTGCCAGACTGGCTTCTATGGAGAGTTCATCATTGGGGAGGATTACGGGGT  
 CTCAATGCCTCCAACGACCTAGCTGCCAGCCAGATCTCTCCAGGGAGAGGAGAATGAGCCACGCGTT  
 CCAGAGTTGCAGGATCTCCAGGGCAAAGAAGTGCCCCAGGTCTCTACTTGGACTCTCCAAGTCTCCAGC  
 CATTCCAGGTAGAAGAAAGAAGGAAACGTGAGGAGCTGCAGGTGCCAGAGTTCAGGCCTGCCACAGAC  
 GGTGGTGCCTCAAACACCTACCCAGCTGGCGGCAACCCGCGATCTCTAGAGAACAGCCTGGATGAAGAA  
 GTGACCATCGAGATCGTTCTCTCCAGCTCTGGGAGCAGGACTCCAGCATGGCCCGTACTGCACAGAAG  
 AGCTGGGAGCCCCACAGAGAAGCAGCGCAGCCTCCCCGCCTCCACCGGAGCAGCACCGGCGGAGG  
 CGAGGTGCAGACCTCCAAGAAGTCTACGTGTGTCCGAAGTGTGGGAAAATCTTCCGCTGGAGGGTCAAC  
 TTCATCCGGCATCTGCGGAGCCGAGGAGCAGGAGAAGCCGACGAGTCTCGGTGTGCGGGGAGCTGT  
 TCAGCGACAGCGAGGACCTGGATGGGCACCTAGAGAGCCACGAGGCCCAGAAGCCTTACCGGTGTGGTGC  
 CTGCGGGAAGAGCTTCCGCTGAACTCCCACCTGCTCTCCACCGCGGATACACCTGCAGCCGGACAGA  
 CTCCAGCCGGTGGAGAAGAGAGAGCAGGCGCATCCGAGGACGCGGACAAGGGTCCCAAAGGCCGCTGG  
 AAAACGGCAAGGCCAACTGAGCTTCCAGTGTGTGAGTGTGGGAAGGCCTTCCAGCGGCACGACCCT  
 GGCTCGGCACCGCAGCCACTTTCACCTGAAGGACAAAGCCCGGCCCTTCCAGTCCCGGTACTGCGTCAAG  
 AGCTTACGCAGAACTATGACCTCTCCGCCACGAGCGCTGCACATGAAGCGCCGTTCCAAGCAGGCTC  
 TGAACCTCTAC

AG**CGGACCG**ACGCGTACGCGGCCGCTCGAG - GFP Tag - GTTTAA

**Protein Sequence:**

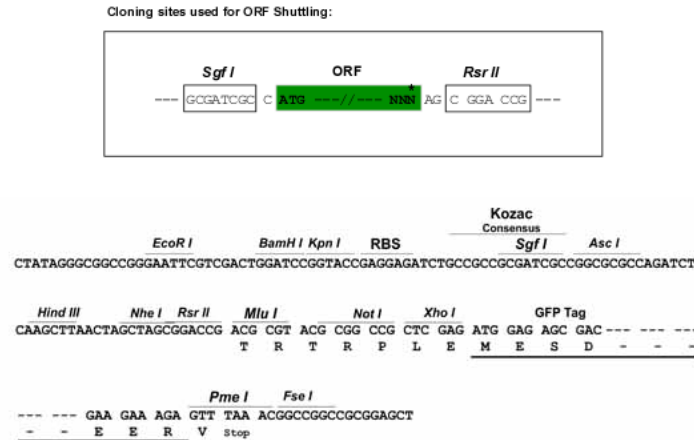
>RG203534 representing NM\_032752  
 Red=Cloning site Green=Tags(s)

MPTALCPRLAPKESEEPKMRSPGENPSPQGELPSPSSRRLFRRFRYQEAAGPREALQRLWDLCGGW  
 LRPERHTKEQILELLVLEQFLAILPREIQSWRAQEPESGEQAVAAVEALEREPRPWQLKHCEDPVVI  
 DDGDSPLDQEQQLPVEPHSDLAKNQDAQPITLAQCLGLPSRPPSQLSGDPVLQDAFLLEENVRDQQV  
 TTLQLPPSRVSPFKDMILCFSEEDWSLLDPAQTGFYGEFIIIGEDYGVSMPPNDLAAQPDLSQGEENEPRV  
 PELQDLQKQVQVSYLDSPSLQPFQVEERRKREELQVPEFQACPQTVVPQNTYPAGGNPRSLNSLDEE  
 VTIEIVLSSSGDEDSQHGPYCTEELGSPTEKQSRSLPASHRSSTEAGGEVQTSKKSYYVCPNCGKIFRWRVN  
 FIRHLRSRREQEPHECSVCGELFSDSEDLDGHLESHEAQKPYRCGACGKSFRLNSHLLSHRRIHLQDPDR  
 LQPVKEKREQAASEDADKGPKEPLENGKAKLSFQCCECGKAFQRHDHLARHRSHFHLKDKARPFQCRYCVK  
 SFTQNYDLLRHERLHMRRSKQALNSY

SGP**TRRRLE** - GFP Tag - V

**Restriction Sites:**

Sgfl-RsrII

**Cloning Scheme:**


**ACCN:** NM\_032752

**ORF Size:** 1761 bp

**OTI Disclaimer:** The molecular sequence of this clone aligns with the gene accession number as a point of reference only. However, individual transcript sequences of the same gene can differ through naturally occurring variations (e.g. polymorphisms), each with its own valid existence. This clone is substantially in agreement with the reference, but a complete review of all prevailing variants is recommended prior to use. [More info](#)

**OTI Annotation:** This clone was engineered to express the complete ORF with an expression tag. Expression varies depending on the nature of the gene.

**Components:** The ORF clone is ion-exchange column purified and shipped in a 2D barcoded Matrix tube containing 10ug of transfection-ready, dried plasmid DNA (reconstitute with 100 ul of water).

**Reconstitution Method:**

1. Centrifuge at 5,000xg for 5min.
2. Carefully open the tube and add 100ul of sterile water to dissolve the DNA.
3. Close the tube and incubate for 10 minutes at room temperature.
4. Briefly vortex the tube and then do a quick spin (less than 5000xg) to concentrate the liquid at the bottom.
5. Store the suspended plasmid at -20°C. The DNA is stable for at least one year from date of shipping when stored at -20°C.

**RefSeq:** [NM\\_032752.3](#)

**RefSeq Size:** 2453 bp

**RefSeq ORF:** 1764 bp

**Locus ID:** 84838

**UniProt ID:** [Q96IT1](#)

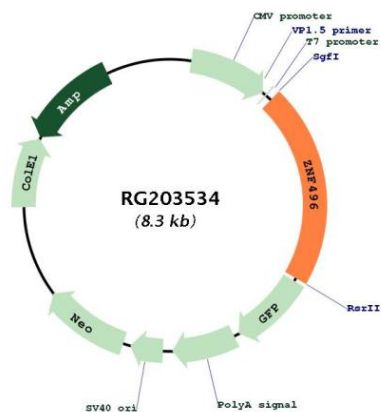
**Cytogenetics:** 1q44

**Domains:** KRAB, LER, zf-C2H2

**Protein Families:** Transcription Factors

**Gene Summary:** DNA-binding transcription factor that can both act as an activator and a repressor.  
[UniProtKB/Swiss-Prot Function]

### Product images:



Circular map for RG203534