

Product datasheet for **RG203525**

DACT3 (NM_145056) Human Tagged ORF Clone

Product data:

Product Type: Expression Plasmids
Product Name: DACT3 (NM_145056) Human Tagged ORF Clone
Tag: TurboGFP
Symbol: DACT3
Synonyms: DAPPER3; RRR1
Mammalian Cell Selection: Neomycin
Vector: pCMV6-AC-GFP (PS100010)
E. coli Selection: Ampicillin (100 ug/mL)
ORF Nucleotide Sequence: >RG203525 representing NM_145056
Red=Cloning site Blue=ORF Green=Tags(s)

TTTTGTAATACGACTCACTATAGGGCGGCCGGAATTCGTCGACTGGATCCGGTACCGAGGAGATCTGCC
GCC**CGATCGCC**

ATGCGCAGCCCGGGCCCTGCGGCCGCCCTCCCACCGACTCGCCGACGCGGGGGGCGCAGGGCGGCCCC
TGGACGGTACATCTCGGCGCTCTGCGCAGGCGCCGCCCGGGGGGCGGGCCAGCCCCGACCAGTCC
TGGGGGCGCGGACGGCGGCCCGGGCGCCAGAACAGCGTGGCCAGCGGCCGCCGACGCGTCTCCGTCC
CCCGGACGCGCGACCCGCGGGGAGCCCTCGTTGGAGCGCGTGGGGGCCACCCACCAGCCCTGCCG
CCTTGAGCCGCGCTGGGCGTCTGCTGGGAGTCGGAGCGGCACCCGAGCCCGTGCGCCGCCCGCCG
CCCTCACCCCCGACAGCCCGCTGAGGGCCGCTTGGTGAAGGCGCAGTACATCCCGGGCGCGCAGGGC
GCCACCCGAGGCCTCCCTGGCCGCGCCGCCCGCCGCAAACCGCCGCCACTGACCCGCGGCCGCGAGCGTGG
AGCAGTACCACCCCGGGAGCGTCCCGGGCCGCGCGCCCGCTGGACGCATGGCCGAGGCTTCGGGCCG
CCGCGGCTCGCCAGGGCCCGCAAGGCCTCGCGCTCCCAGTCTGAGACCAGCCTGCTGGGCCGCGCTCC
GCGGTCCCTTCGGGGCCCTAAGTACCCACGGCGGAGCGGGAAGACCTCGGCCTCCACGGCCACGCC
GCGGCCAGCGCCACGCTGGCGGCCAGGCCGAGGGTCTGCCGTGCTGGCGCTCCACTGCGGAGAT
CGACGCTCCCGATGGGCGCCGCTGCGGCCCGAGCCCTGCGGCGCGTGTCCCGGCCCGGCCCGTCC
CCGTGAGTCCCAGCGTCTGCTTTACGGCTGCGCGGGCAGCGACTCCGAGTGTCTGGTGGGCGCC
TGGGCCCTGGGACCGCGGGGCTGCGGGAGCGCTCGCGGGGGTTACGGGGAGAGCGAATCGAGCGC
CAGCGAGGGAGAATCGCCTGCCTCAGCTCGCTCCAGCGACTCAGACGCGAGCGGTGGCTCGTGTGG
CCGCGAGCAGTGGTGGCGCCACCGCGGCTCTGGGGTGGAGCAGTGCAGGGGCGCCCGAGGCCCG
CCAAAGTCTTCTGAAAAATCAAAGCTTCCACGCGCTCAAGAAAAAGATACTGCGTTTCCGTTCCGGTTC
TCTCAAGGTCATGACTACAGTG

AGCGGACCGACGCGTACGCGGCCGCTCGAG - GFP Tag - GTTTAA



[View online »](#)

Protein Sequence: >RG203525 representing NM_145056
Red=Cloning site Green=Tags(s)

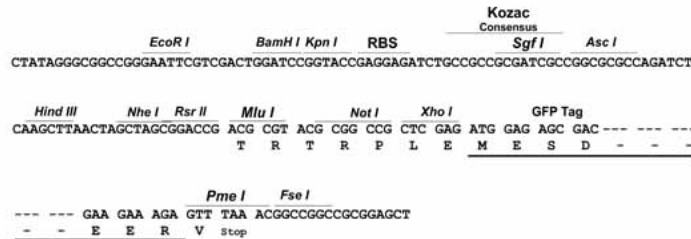
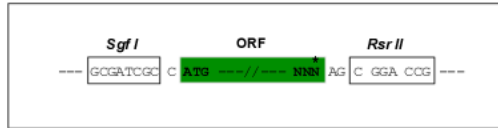
MRSRPRPCGRPPTDSPDAGGAGRPLDGYISALLRRRRRRGAGQPRTSPGGADGGPRRQNSVRQRPPDASPS
 PGSARPAREPSLERVGGHPTSPAALSRAWASSWESEAPEPAAPPAAPSPPDSPAEGRLVKAQYIPGAQA
 ATRGLPGRAARRKPPPLTRGRSVEQSPPRERPRAAGRRGRMAEASGRRGSPRARKASRSQSETSLGRAS
 AVPSGPPKYPTAEREERPPRRRGPAPTLAAQAAGSCRRWRSTAEIDAADGRRVRPRAPAARVPGPGPS
 PSAPQRLLLYGCAGSDSECSAGRLGPLGRRGPAGGVGGYGESESSASEGESPAFSSASSSDSGSGLLVW
 PQLVAATAASGGGAGAGAPAGPAKVFVKIKASHALKKKILFRSGSLKVMTTY

SGPTRRRLE - GFP Tag - V

Restriction Sites: SgfI-RsrII

Cloning Scheme:

Cloning sites used for ORF Shutting:



ACCN: NM_145056

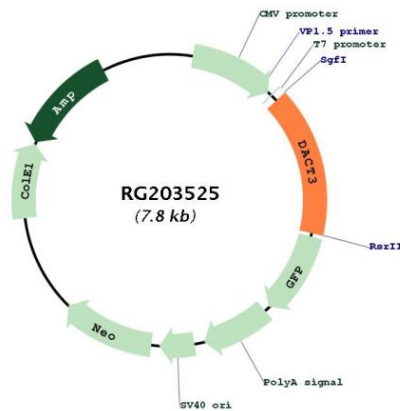
ORF Size: 1212 bp

OTI Disclaimer: Due to the inherent nature of this plasmid, standard methods to replicate additional amounts of DNA in E. coli are highly likely to result in mutations and/or rearrangements. Therefore, OriGene does not guarantee the capability to replicate this plasmid DNA. Additional amounts of DNA can be purchased from OriGene with batch-specific, full-sequence verification at a reduced cost. Please contact our customer care team at custsupport@origene.com or by calling 301.340.3188 option 3 for pricing and delivery.

The molecular sequence of this clone aligns with the gene accession number as a point of reference only. However, individual transcript sequences of the same gene can differ through naturally occurring variations (e.g. polymorphisms), each with its own valid existence. This clone is substantially in agreement with the reference, but a complete review of all prevailing variants is recommended prior to use. [More info](#)

OTI Annotation: This clone was engineered to express the complete ORF with an expression tag. Expression varies depending on the nature of the gene.

Components:	The ORF clone is ion-exchange column purified and shipped in a 2D barcoded Matrix tube containing 10ug of transfection-ready, dried plasmid DNA (reconstitute with 100 ul of water).
Reconstitution Method:	<ol style="list-style-type: none"> 1. Centrifuge at 5,000xg for 5min. 2. Carefully open the tube and add 100ul of sterile water to dissolve the DNA. 3. Close the tube and incubate for 10 minutes at room temperature. 4. Briefly vortex the tube and then do a quick spin (less than 5000xg) to concentrate the liquid at the bottom. 5. Store the suspended plasmid at -20°C. The DNA is stable for at least one year from date of shipping when stored at -20°C.
RefSeq:	<u>NM_145056.1, NP_659493.1</u>
RefSeq Size:	2544 bp
RefSeq ORF:	1890 bp
Locus ID:	147906
UniProt ID:	<u>Q96B18</u>
Cytogenetics:	19q13.32
Gene Summary:	May be involved in regulation of intracellular signaling pathways during development. Specifically thought to play a role in canonical and/or non-canonical Wnt signaling pathways through interaction with DSH (Dishevelled) family proteins.[UniProtKB/Swiss-Prot Function]

Product images:


Circular map for RG203525