

Product datasheet for **RG203517**

CDC34 (NM_004359) Human Tagged ORF Clone

Product data:

Product Type: Expression Plasmids
Product Name: CDC34 (NM_004359) Human Tagged ORF Clone
Tag: TurboGFP
Symbol: CDC34
Synonyms: E2-CDC34; UBC3; UBCH3; UBE2R1
Mammalian Cell Selection: Neomycin
Vector: pCMV6-AC-GFP (PS100010)
E. coli Selection: Ampicillin (100 ug/mL)
ORF Nucleotide Sequence: >RG203517 representing NM_004359
Red=Cloning site Blue=ORF Green=Tags(s)

TTTTGTAATACGACTCACTATAGGGCGGCCGGAATTCGTCGACTGGATCCGGTACCGAGGAGATCTGCC
GCC**CGATCGCC**

ATGGCTCGGCCGCTAGTGCCAGCTCGCAGAAGGCGCTGCTGCTGGAGCTCAAGGGGCTGCAGGAAGAGC
CGGTCGAGGGATTCCGCGTGACTGGTGGACGAGGGCGATCTATACTGGGAGGTGGCCATCTTCGG
GCCCCAACACCTACTACGAGGGCGGCTACTTCAAGGCGCGCTCAAGTTCCCCATCGACTACCCATAC
TCTCCACCAGCCTTTTCGGTTCTGACCAAGATGTGGCACCTAACATCTACGAGACGGGGACGTGTGTA
TCTCCATCCTCCACCCGCGGTGGACGACCCCCAGAGCGGGAGCTGCCCTCAGAGAGGTGGAACCCAC
GCAGAAGCTCAGGACCTTCTCCTGAGTGTGATCTCCCTCCTGAACGAGCCCAACACCTTCTCGCCCGCA
AACGTGGACGCTCCGTGATGTACAGGAAGTGGAAAGAGAGCAAGGGGAAGGATCGGGAGTACACAGACA
TCATCCGGAAGCAGGTCTTGGGACCAAGGTGGACGCGGAGCGTGACGGCGTGAAGGTGCCACACGCT
GGCCGAGTACTGCGTGAAGACCAAGGCGCGGCCGACGAGGGCTCAGACCTTCTACGACGACTAC
TACGAGGACGGCAGGTGGAGGAGGAGCCGACAGCTGCTTCGGGACGATGAGGATGACTCTGGCACGG
AGGAGTCC

ACGCGTACGCGGCCGCTCGAG - GFP Tag - GTTTAA



[View online »](#)

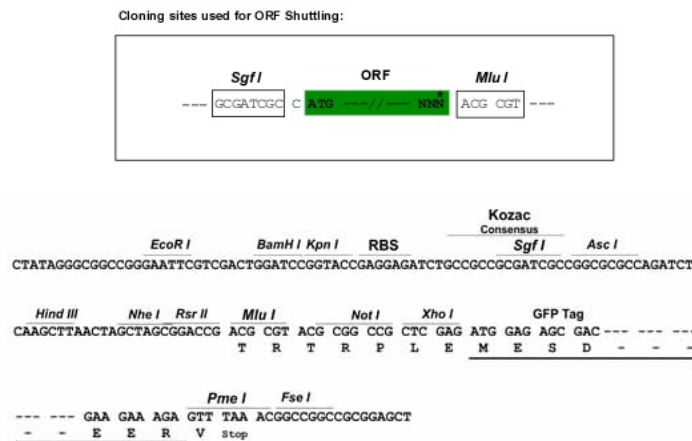
Protein Sequence: >RG203517 representing NM_004359
 Red=Cloning site Green=Tags(s)

MARPLVPSSQKALLLELKGLEQEEPVEGFRVTLVDEGDLYNWEVAIFGPPNTYYEGGYFKARLKFPIDYPY
 SPPAFRFLTKMWHPNIYETGDVCISILHPPVDDPQSGELPSEWRNPTQNVRTILLSVISLLNEPNTFSPA
 NVDASVMYRKWKESKGDREYTDIIRKQVLGTKVDAERDGVKVP TTLAEYCVKTKAPAPDEGSDLFYDDY
 YEDGEVEEEEADSCFGDDEDDSGTEES

TRTRPLE - GFP Tag - V

Restriction Sites: SgfI-MluI

Cloning Scheme:



ACCN: NM_004359

ORF Size: 708 bp

OTI Disclaimer: The molecular sequence of this clone aligns with the gene accession number as a point of reference only. However, individual transcript sequences of the same gene can differ through naturally occurring variations (e.g. polymorphisms), each with its own valid existence. This clone is substantially in agreement with the reference, but a complete review of all prevailing variants is recommended prior to use. [More info](#)

OTI Annotation: This clone was engineered to express the complete ORF with an expression tag. Expression varies depending on the nature of the gene.

Components: The ORF clone is ion-exchange column purified and shipped in a 2D barcoded Matrix tube containing 10ug of transfection-ready, dried plasmid DNA (reconstitute with 100 ul of water).

Reconstitution Method:

1. Centrifuge at 5,000xg for 5min.
2. Carefully open the tube and add 100ul of sterile water to dissolve the DNA.
3. Close the tube and incubate for 10 minutes at room temperature.
4. Briefly vortex the tube and then do a quick spin (less than 5000xg) to concentrate the liquid at the bottom.
5. Store the suspended plasmid at -20°C. The DNA is stable for at least one year from date of shipping when stored at -20°C.

RefSeq: [NM_004359.2](#)

RefSeq Size: 1462 bp

RefSeq ORF: 711 bp

Locus ID: 997

UniProt ID: [P49427](#)

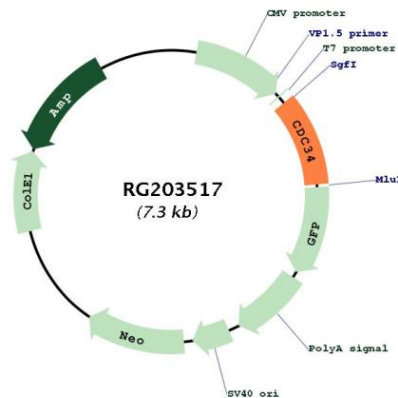
Cytogenetics: 19p13.3

Domains: UBCc

Protein Pathways: Ubiquitin mediated proteolysis

Gene Summary: The protein encoded by this gene is a member of the ubiquitin-conjugating enzyme family. Ubiquitin-conjugating enzyme catalyzes the covalent attachment of ubiquitin to other proteins. This protein is a part of the large multiprotein complex, which is required for ubiquitin-mediated degradation of cell cycle G1 regulators, and for the initiation of DNA replication. [provided by RefSeq, Jul 2008]

Product images:



Circular map for RG203517