

## Product datasheet for **RG203514**

### MESD (NM\_015154) Human Tagged ORF Clone

#### Product data:

Product Type: Expression Plasmids

Product Name: MESD (NM\_015154) Human Tagged ORF Clone

Tag: TurboGFP

Symbol: MESD

Synonyms: BOCA; MESDC2; OI20

Mammalian Cell Selection: Neomycin

Vector: pCMV6-AC-GFP (PS100010)

E. coli Selection: Ampicillin (100 ug/mL)

ORF Nucleotide Sequence: >RG203514 representing NM\_015154  
Red=Cloning site Blue=ORF Green=Tags(s)

TTTTGTAATACGACTCACTATAGGGCGGCCGGAATTCGTCGACTGGATCCGGTACCGAGGAGATCTGCC  
GCC**CGATCGCC**

ATGGCGGCTTCCAGGTGGGCGCGCAAGGCCGTGGTCTGCTTTGTGCCTCTGACCTGCTGCTGCTGCTGCTGCTGCT  
TACTGCTACCACCGCCTGGGTCTGCGCGGCCGAAGGCTCGCCCGGACGCCGACGAGTCTACCCACC  
TCCCCGAAGAAGAAGAAGGATATTCGCGATTACAATGATGCAGACATGGCGCTTTCTGGAGCAATGG  
GAGAAAGATGATGACATTGAAGAAGGAGATCTTCCAGAGCACAAAGAGACCTTTCAGCACCTGTCGACTTCT  
CAAAGATAGACCCAAGCAAGCCTGAAAGCATATTGAAAATGACGAAAAAAGGGAAGACTCTCATGATGTT  
TGTCACTGTATCAGGAAGCCCTACTGAGAAGGAGACAGAGGAAATTACGAGCCTCTGGCAGGGCAGCCTT  
TCAATGCCAACTATGACGTCCAGAGGTTTCATTGTGGGATCAGACCGTGCTATCTTCATGCTTCCGGATG  
GGAGCTACGCCTGGGAGATCAAGGACTTTTTGGTCCGGTCAAGACAGGTGTGCTGATGTAAGTCTGGAGGG  
CCAGGTGTACCCCGCAAGGAGGAGGAAAGCAAGAGAAAAATAAAACAAGCAAGACAAGGCCAAAAAA  
AAGAAGGAAGGAGATCTGAAATCTCGGTCTTCCAAGGAAGAAAATCGAGCTGGAATAAAAGAGAAGACC  
TG

**ACGCGTACGCGGCCGCTCGAG** - GFP Tag - GTTTAA



[View online >](#)

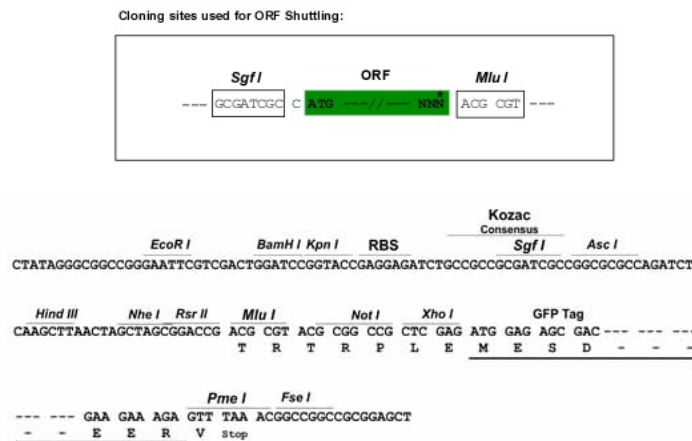
**Protein Sequence:** >RG203514 representing NM\_015154  
Red=Cloning site Green=Tags(s)

MAASRWARKAVLLCASDLLLLLLLPPPGSCAAEGSPGTPDESTPPPRKKKDIRDYNDADMARLLEQW  
 EKDDDIIEGDLPEHKRPSAPVDFSKIDPSKPESILKMTKKGKTLMMFVTVSGSPTEKETEEITSLWQGS  
 FNANYDVQRFIVGSDRAIFMLRDGSYAWIEIKDFLVGQDRCADVTLEGVYPGKGGGSKEKNKTKQDKGKK  
 KKEGDLKSRSSKEENRAGNKREDL

TRTRPLE - GFP Tag - V

**Restriction Sites:** SgfI-MluI

**Cloning Scheme:**



**ACCN:** NM\_015154

**ORF Size:** 702 bp

**OTI Disclaimer:** The molecular sequence of this clone aligns with the gene accession number as a point of reference only. However, individual transcript sequences of the same gene can differ through naturally occurring variations (e.g. polymorphisms), each with its own valid existence. This clone is substantially in agreement with the reference, but a complete review of all prevailing variants is recommended prior to use. [More info](#)

**OTI Annotation:** This clone was engineered to express the complete ORF with an expression tag. Expression varies depending on the nature of the gene.

**Components:** The ORF clone is ion-exchange column purified and shipped in a 2D barcoded Matrix tube containing 10ug of transfection-ready, dried plasmid DNA (reconstitute with 100 ul of water).

**Reconstitution Method:**

1. Centrifuge at 5,000xg for 5min.
2. Carefully open the tube and add 100ul of sterile water to dissolve the DNA.
3. Close the tube and incubate for 10 minutes at room temperature.
4. Briefly vortex the tube and then do a quick spin (less than 5000xg) to concentrate the liquid at the bottom.
5. Store the suspended plasmid at -20°C. The DNA is stable for at least one year from date of shipping when stored at -20°C.

**RefSeq:** [NM\\_015154.3](#)

**RefSeq Size:** 4243 bp

**RefSeq ORF:** 705 bp

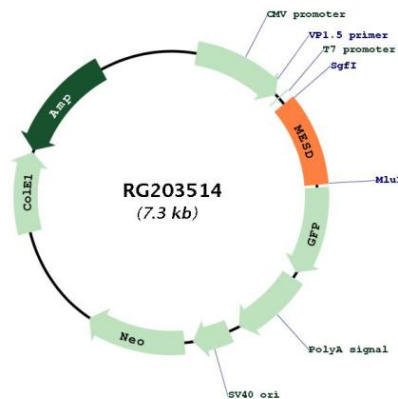
**Locus ID:** 23184

**UniProt ID:** [Q14696](#)

**Cytogenetics:** 15q25.1

**Gene Summary:** Chaperone specifically assisting the folding of beta-propeller/EGF modules within the family of low-density lipoprotein receptors (LDLRs). Acts as a modulator of the Wnt pathway through chaperoning the coreceptors of the canonical Wnt pathway, LRP5 and LRP6, to the plasma membrane. Essential for specification of embryonic polarity and mesoderm induction. Plays an essential role in neuromuscular junction (NMJ) formation by promoting cell-surface expression of LRP4 (By similarity). May regulate phagocytosis of apoptotic retinal pigment epithelium (RPE) cells (By similarity).[UniProtKB/Swiss-Prot Function]

### Product images:



Circular map for RG203514