

Product datasheet for **RG203486**

POLR1C (NM_203290) Human Tagged ORF Clone

Product data:

Product Type:	Expression Plasmids
Product Name:	POLR1C (NM_203290) Human Tagged ORF Clone
Tag:	TurboGFP
Symbol:	POLR1C
Synonyms:	AC40; HLD11; RPA5; RPA39; RPA40; RPAC1; RPC40; TCS3
Mammalian Cell Selection:	Neomycin
Vector:	pCMV6-AC-GFP (PS100010)
E. coli Selection:	Ampicillin (100 ug/mL)
ORF Nucleotide Sequence:	>RG203486 representing NM_203290 Red=Cloning site Blue=ORF Green=Tags(s)

TTTTGTAATACGACTCACTATAGGGCGGCCGGAATTCGTCGACTGGATCCGGTACCGAGGAGATCTGCC
GCC**CGATCGC**C

ATGGCGGCTTCTCAGGCGGTGGAGGAAATGCGGAGCCGCGTGGTTCTGGGGAGTTGGGGTTCCGAATG
TCCATACTACTGACTTTCCCGGTAATACTCCGGTTATGATGATGCCTGGGACCAGGACCGCTTCGAGAA
GAATTTCCGTGTGGATGTAGTACACATGGATGAAAACACTGGAGTTTGACATGGTGGGAATTGACGCA
GCCATTGCCAATGCTTTTCGACGAATTCTGCTAGCTGAGGTGCCAACTATGGCTGTGGAGAAGTCTCGG
TGTACAATAATACATCCATTGTTTCAGGATGAGATTCTTGCTCACCGTCTGGGGCTCATTCCCATTCATGC
TGATCCCCGTCTTTTGTAGTATCGGAACCAAGGAGATGAAGAAGGCACAGAGATAGATACTCTACAGTTT
CGTCTCCAGGTCAGATGCACTCGGAACCCCATGCTGCTAAAGATTCTCTGACCCCAACGAACTGTACG
TGAACCACAAAGTGTATACCAGGCATATGACATGGATCCCCCTGGGGAACCAGGCTGATCTCTTTCCAGA
GGGCACTATCCGACCAGTGCATGATGATATCCTCATCGCTCAGCTGCGGCCTGGCCAAGAAATTGACCTG
CTCATGCACTGTGTCAAGGGCATTGGCAAAGATCATGCCAAGTTTTACCAGTGGCAACAGCCAGTTACA
GGCTCTGCCAGACATCACCTGCTTGAGCCCGTGAAGGGGAGGCAGCTGAGGAGTTGAGCAGGTGCTT
CTCACCTGGTGTATTGAGGTGCAGGAAGTCCAAGGTAAGGTAAGGTTGGCCAGAGTTGCCAACCCCGGCTG
GATACCTTCAGCAGAGAAATCTCCGGAATGAGAAGCTAAAGAAGTTGTGAGGCTTGCCCGGTTTCGAG
ATCATTATCTTCTCTGTTGAGTCAACGGGGTGTGGCCACCAGATGTGCTGGTGAAGTGAAGCCATCAA
AGTACTGATGGGAAGTGCCGGCCTTCTTGGATGAACTAGATGCGGTTTCAGATGGAC

ACGCGTACGCGGCCGCTCGAG - GFP Tag - GTTTAA



[View online »](#)

Protein Sequence: >RG203486 representing NM_203290
Red=Cloning site Green=Tags(s)

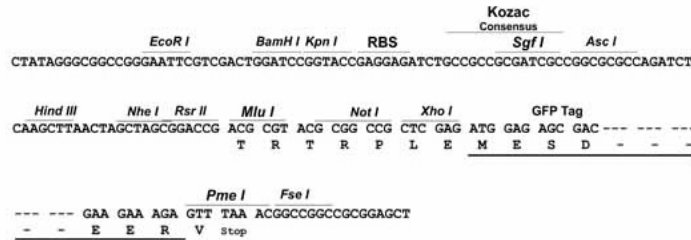
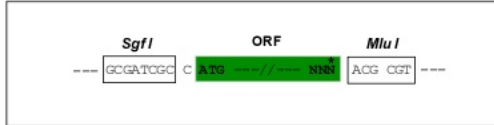
MAASQAVEEMRSRVVLGEFGVRNVHTTDFPGNYSYDDAWDQDRFEKNFRVDVVHMDENSLEFDMVGIDA
 AIANAFRRILLAEVPTMAVEKVLVYNNTSIVQDEILAHRLGLIPIHADPRLFEYRNQGDEEGTEIDTLQF
 RLQVRCRTRNPHAADSSDPNELVYNHKVYTRHMTWIPLGNQADLFPEGTIRPVHDDILIAQLRPGQEIDL
 LMHCVKIGIKDHAKFSPVATASYRLLPDITLLEPVEGEAAEELSRCFSPGVIEVQEVQGGKVARVANPRL
 DTFSRIFRNEKLLKVVRLARVRDHYIFSVESTGVLPPDVLVSEAIKVLMGKCRRFLELDAVQMD

TRTRPLE - GFP Tag - V

Restriction Sites: SgfI-MluI

Cloning Scheme:

Cloning sites used for ORF Shuttling:



ACCN: NM_203290

ORF Size: 1038 bp

OTI Disclaimer: The molecular sequence of this clone aligns with the gene accession number as a point of reference only. However, individual transcript sequences of the same gene can differ through naturally occurring variations (e.g. polymorphisms), each with its own valid existence. This clone is substantially in agreement with the reference, but a complete review of all prevailing variants is recommended prior to use. [More info](#)

OTI Annotation: This clone was engineered to express the complete ORF with an expression tag. Expression varies depending on the nature of the gene.

Components: The ORF clone is ion-exchange column purified and shipped in a 2D barcoded Matrix tube containing 10ug of transfection-ready, dried plasmid DNA (reconstitute with 100 ul of water).

Reconstitution Method:

1. Centrifuge at 5,000xg for 5min.
2. Carefully open the tube and add 100ul of sterile water to dissolve the DNA.
3. Close the tube and incubate for 10 minutes at room temperature.
4. Briefly vortex the tube and then do a quick spin (less than 5000xg) to concentrate the liquid at the bottom.
5. Store the suspended plasmid at -20°C. The DNA is stable for at least one year from date of shipping when stored at -20°C.

RefSeq: [NM_203290.4](#)

RefSeq Size: 1322 bp

RefSeq ORF: 1041 bp

Locus ID: 9533

UniProt ID: [O15160](#)

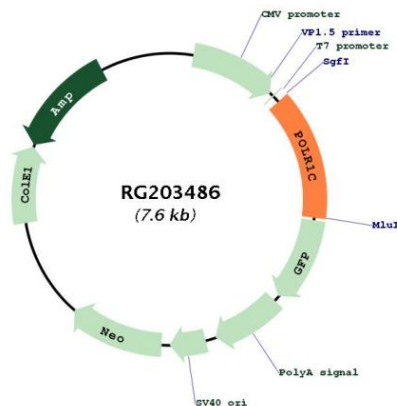
Cytogenetics: 6p21.1

Protein Families: Druggable Genome, Stem cell - Pluripotency, Transcription Factors

Protein Pathways: Cytosolic DNA-sensing pathway, Metabolic pathways, Purine metabolism, Pyrimidine metabolism, RNA polymerase

Gene Summary: The protein encoded by this gene is a subunit of both RNA polymerase I and RNA polymerase III complexes. The encoded protein is part of the Pol core element. Mutations in this gene have been associated with Treacher Collins syndrome (TCS) and hypomyelinating leukodystrophy 11. Alternative splicing results in multiple transcript variants. [provided by RefSeq, Jan 2016]

Product images:



Circular map for RG203486