

Product datasheet for **RG203469**

ARL3 (NM_004311) Human Tagged ORF Clone

Product data:

Product Type: Expression Plasmids
Product Name: ARL3 (NM_004311) Human Tagged ORF Clone
Tag: TurboGFP
Symbol: ARL3
Synonyms: ARFL3; JBTS35; RP83
Mammalian Cell Selection: Neomycin
Vector: pCMV6-AC-GFP (PS100010)
E. coli Selection: Ampicillin (100 ug/mL)
ORF Nucleotide Sequence: >RG203469 representing NM_004311
Red=Cloning site Blue=ORF Green=Tags(s)

TTTTGTAATACGACTCACTATAGGGCGCCGGGAATTCGTCGACTGGATCCGGTACCGAGGAGATCTGCC
GCC**CGATCGCC**

ATGGGCTTGCTCTCAATTTTGGCAAGTTGAAAAGTGCACCAGACCAGGAGGTGAGAATACTTCTCCTGG
GCTTGGATAATGCTGGCAAGACCCTCTTCTGAAGCAGCTTGCATCTGAAGACATCAGCCACATCACACC
TACACAGGGTTTCAACATCAAAGTGTACAATCACAAGGTTTTAACTGAATGTATGGGACATTGGTGA
CAGAGGAAAATCAGACCATACTGGAAGAATTATTTGAAAATACCGATATCTTATATATGTAATCGACA
GTGCAGACAGAAAAGATTTGAAGAGACGGGTGAGGAAGTACTGGAGGAAGAAAACTAAG
TTGTGTGCCAGTCTCATCTTTGCTAATAAGCAGGATTTGCTCACAGCAGCCCCTGCCTCTGAAATTGCA
GAAGGACTGAACCTGCATACCATCCGCGACCGAGTCTGGCAGATCCAGTCTTGCTCAGCTCTCACAGGAG
AGGGCGTTCAGGATGGCATGAACTGGGTCTGCAAAAATGTCAATGCAAAGAAGAAA

ACGCGTACGCGGCCGCTCGAG - GFP Tag - GTTTAA

Protein Sequence: >RG203469 representing NM_004311
Red=Cloning site Green=Tags(s)

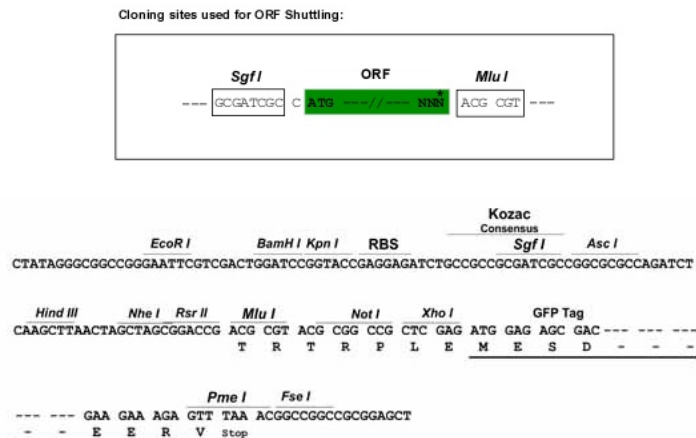
MGLLSILRKLKSPDQEVRIILLGLDNAGKTTLLKQLASEDISHITPTQGFNIKSVQSQGFKLNVDIGG
QRKIRPYWKNYFENDILIIYVIDSADRKRFEETGQELAELEEEKLSVPLVIFANKQDLLTAAPASEIA
EGLNLHTIRDRVWQIQSCSALTGEGVQDGMNWVCKNVNAKK

TRTRPLE - GFP Tag - V

Restriction Sites: Sgfl-MluI



[View online >](#)

Cloning Scheme:


ACCN: NM_004311

ORF Size: 546 bp

OTI Disclaimer: The molecular sequence of this clone aligns with the gene accession number as a point of reference only. However, individual transcript sequences of the same gene can differ through naturally occurring variations (e.g. polymorphisms), each with its own valid existence. This clone is substantially in agreement with the reference, but a complete review of all prevailing variants is recommended prior to use. [More info](#)

OTI Annotation: This clone was engineered to express the complete ORF with an expression tag. Expression varies depending on the nature of the gene.

Components: The ORF clone is ion-exchange column purified and shipped in a 2D barcoded Matrix tube containing 10ug of transfection-ready, dried plasmid DNA (reconstitute with 100 ul of water).

Reconstitution Method:

1. Centrifuge at 5,000xg for 5min.
2. Carefully open the tube and add 100ul of sterile water to dissolve the DNA.
3. Close the tube and incubate for 10 minutes at room temperature.
4. Briefly vortex the tube and then do a quick spin (less than 5000xg) to concentrate the liquid at the bottom.
5. Store the suspended plasmid at -20°C. The DNA is stable for at least one year from date of shipping when stored at -20°C.

RefSeq: [NM_004311.4](#)

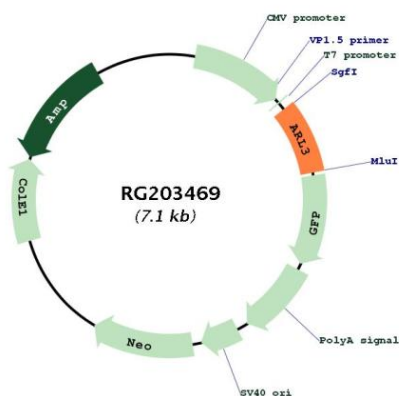
RefSeq Size: 3891 bp

RefSeq ORF: 549 bp

Locus ID: 403

UniProt ID: [P36405](#)

Cytogenetics: 10q24.32
Domains: SAR, ARF, arf
Protein Families: Druggable Genome
Gene Summary: ADP-ribosylation factor-like 3 is a member of the ADP-ribosylation factor family of GTP-binding proteins. ARL3 binds guanine nucleotides but lacks ADP-ribosylation factor activity. [provided by RefSeq, Jul 2008]

Product images:


Circular map for RG203469