

## Product datasheet for **RG203458**

### PRMT5 (NM\_006109) Human Tagged ORF Clone

#### Product data:

Product Type:	Expression Plasmids
Product Name:	PRMT5 (NM_006109) Human Tagged ORF Clone
Tag:	TurboGFP
Symbol:	PRMT5
Synonyms:	HRMT1L5; HSL7; IBP72; JBP1; SKB1; SKB1Hs
Mammalian Cell Selection:	Neomycin
Vector:	pCMV6-AC-GFP (PS100010)
E. coli Selection:	Ampicillin (100 ug/mL)



[View online »](#)

**ORF Nucleotide Sequence:**

>RG203458 representing NM\_006109  
 Red=Cloning site Blue=ORF Green=Tags(s)

TTTTGTAATACGACTCACTATAGGGCGGCCGGAATTCGTCGACTGGATCCGGTACCGAGGAGATCTGCC  
 GCC**CGGATCGCC**

ATGGCGGCGATGGCGGTGCGGGGTGCTGGTGGGAGCCCGTGTCCAGCGGAGGGACCTGAATTGCGTCC  
 CCGAAATAGCTGACACACTAGGGGCTGTGGCCAAGCAGGGGTTGATTTCTCTGCATGCCTGTCTTCCA  
 TCCGCGTTTCAAGAGGGAGTTTCATTACAGAACCTGCTAAGAATCGGCCCGGTCCCCAGACACGATCAGAC  
 CTAAGTGTGTCAGGAAGGGACTGGAATACGCTAATTGTGGGAAAGCTTTCTCCATGGATTCGTCAGACT  
 CAAAAGTGGAGAAGATTCGACAGAACTCCGAGGCGGCCATGTTACAGGAGCTGAATTTGGTGCATATTT  
 GGGTCTTCCAGCTTCTGCTGCCCTTAATCAGGAAGATAACACCAACCTGGCCAGAGTTTTGACCAAC  
 CACATCCACACTGGCCATCACTTTCATGTTCTGGATGCGGGTACCCTTGGTGGCACCAGAGGACCTGA  
 GAGATGATATAATTGAGAATGCACCAACTACACACACAGAGGAGTACAGTGGGGAGGAGAAAACGTGGAT  
 GTGGTGGCACAACCTCCGGACTTTGTGACTATAGTAAGAGGATTGCAGTGGCTCTTGAATTTGGGGCT  
 GACCTCCCATCTAATCATGTCTTATGATCGCTGGCTTGGGAGCCCATCAAAGCAGCCATTCTCCCCACTA  
 GCATTTTCTGACCAATAAGAAGGGATTTCTGTTCTTTCTAAGATGCACCAGAGGCTCATCTTCCGGCT  
 CCTCAAGTTGGAGGTGCAGTTCATCATCACAGGCCAACCAACCACTCAGAGAAGGAGTTCTGCTCCTAC  
 CTCCAATACCTGGAACTTAAGCCAGAACCGTCTCCACCTAATGCCTATGAACCTTTGCCAAGGGCT  
 ATGAAGACTATCTGCAGTCCCGCTTACGCCACTGATGGACAATCTGGAATCTCAGACATATGAAGTGT  
 TGAAAAGGACCCCATCAAATACTCTCAGTACCAGCAGGCCATCTATAAATGTCTGCTAGACCGAGTACCA  
 GAAGAGGAGAAGGATACCAATGTCCAGGTACTGATGGTGTGGGAGCAGGACGGGACCCCTGGTGAACG  
 CTTCCCTGCGGGCAGCCAAGCAGGCCGACCGCGGATAAAGCTGTATGCTGTGGAGAAAACCCAAATGC  
 CGTGGTACGCTAGAGAAGTGGCAGTTTGAAGAATGGGGAAGCCAAGTGACCGTAGTCTCATCAGACATG  
 AGGGAATGGGTGGCTCCAGAGAAAGCAGACATCATTGTCAGTGAGCTTCTGGGCTCATTTGCTGACAATG  
 AATTGTCGCTGAGTGCCTGGATGGAGCCAGCACTTCTAAAAGATGATGGTGTGAGCATCCCCGGGGA  
 GTACACTTCTTTCTGGCTCCCATCTCTTCTCCAAGCTGTACAATGAGGTCCGAGCCTGTAGGGAGAAG  
 GACCGTGACCCTGAGGCCAGTTTGTAGTGCCTTATGTGGTACGGCTGCACAACCTCCACCAGCTCTCTG  
 CACCCAGCCCTGTTTACCTTCCAGCCATCCCAACAGAGATCCTATGATTGACAACAACCCGCTATTGCAC  
 CTTGGAATTTCTGTGGAGGTGAACACAGTACTACATGGCTTTGCCGGCTACTTTGAGACTGTGCTTTAT  
 CAGGACATCACTCTGAGTATCCGTCCAGAGACTACTCTCTGGGATGTTCTCATGGTTTCCCATCTCT  
 TCCTATTAAGCAGCCATAACGGTACGTGAAGGCCAAACCATCTGTGTGCGTTTTCTGGCGATGCAGCAA  
 TTCCAAGAAGGTGTGGTATGAGTGGGCTGTGACAGCACCAGTCTGTTCTGCTATTATAACCCACAGGC  
 CGCTCATATACCATTGGCCTC

**ACGCGT**ACGCGGCCGCTCGAG – GFP Tag – GTTTAA

**Protein Sequence:**

>RG203458 representing NM\_006109  
 Red=Cloning site Green=Tags(s)

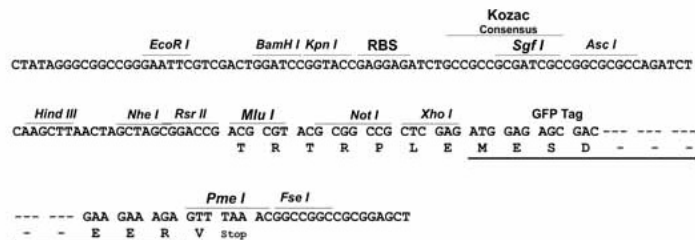
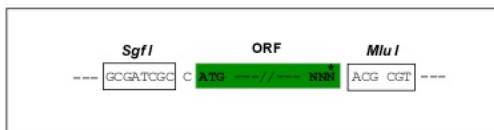
MAAMAVGGAGGSRVSSGRDLNCPVEIADTLGAVAKQGFDFLCMPVFHPRFKREFIQEPAKNRPGPQTRSD  
 LLLSGRDWNTLIVGKLSPIRWDKVEKIRRNSEAAMLQELNFGAYLGLPAFLPLNQNEDNTNLARVLTN  
 HIHTGHHSSMFWMRVPLVAPEDLRDDIENAPTHTEEYSGEETWMMWHNFRTLCDYSKRIAVALAIGA  
 DLPSNHVIDRWLGEPIKAAILPTSIFLTKKGFVLSKMHQRLIFRLLKLEVQFIITGTNHHSEKEFCSY  
 LQYLEYLSQNRPPNAYELFAKGYEDYLSPLQPLMDNLESQTYEVFEKDPKYSQYQQAIIYKCLLDRVP  
 EEEKDNTVQVLMVLGAGRPLVNASLRAAQADRRRIKLYAVEKNPNAVVTLENWQFEEWGSQVTVVSSDM  
 REWVAPEKADIIIVSELLGSFADNELSPECLDGAQHFLKDDGVSIPGEYTSFLAPISSSKLYNEVRACREK  
 DRDPEAQFEMPYVVRHNFHQLSAPQPCFTFSHPNRDPMIDNNRYCTLEFPVEVNTVLHGFAGYFETVLY  
 QDITLSIRPETHSPGMFSWFPIKQPITVREGQTCVRFWRCSNSKVKVYEWAVTAPVCSAIHNPTG  
 RSYTIGL

**TRTRPLE** – GFP Tag – V

Restriction Sites: SgfI-MluI

Cloning Scheme:

Cloning sites used for ORF Shutting:



ACCN: NM\_006109

ORF Size: 1911 bp

OTI Disclaimer: The molecular sequence of this clone aligns with the gene accession number as a point of reference only. However, individual transcript sequences of the same gene can differ through naturally occurring variations (e.g. polymorphisms), each with its own valid existence. This clone is substantially in agreement with the reference, but a complete review of all prevailing variants is recommended prior to use. [More info](#)

OTI Annotation: This clone was engineered to express the complete ORF with an expression tag. Expression varies depending on the nature of the gene.

Components: The ORF clone is ion-exchange column purified and shipped in a 2D barcoded Matrix tube containing 10ug of transfection-ready, dried plasmid DNA (reconstitute with 100 ul of water).

Reconstitution Method:

1. Centrifuge at 5,000xg for 5min.
2. Carefully open the tube and add 100ul of sterile water to dissolve the DNA.
3. Close the tube and incubate for 10 minutes at room temperature.
4. Briefly vortex the tube and then do a quick spin (less than 5000xg) to concentrate the liquid at the bottom.
5. Store the suspended plasmid at -20°C. The DNA is stable for at least one year from date of shipping when stored at -20°C.

RefSeq: [NM\\_006109.5](#)

RefSeq Size: 2385 bp

RefSeq ORF: 1914 bp

Locus ID: 10419

UniProt ID: [O14744](#)

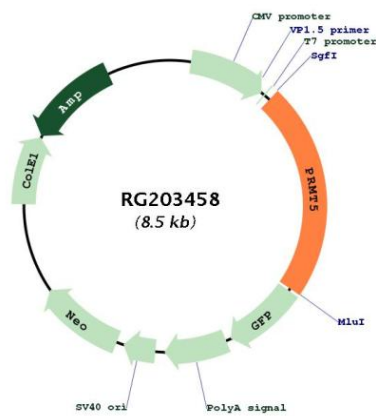
**Cytogenetics:** 14q11.2

**Domains:** Skb1

**Protein Families:** Stem cell - Pluripotency

**Gene Summary:** This gene encodes an enzyme that belongs to the methyltransferase family. The encoded protein catalyzes the transfer of methyl groups to the amino acid arginine, in target proteins that include histones, transcriptional elongation factors and the tumor suppressor p53. This gene plays a role in several cellular processes, including transcriptional regulation, and the assembly of small nuclear ribonucleoproteins. A pseudogene of this gene has been defined on chromosome 4. Alternative splicing results in multiple transcript variants encoding different isoforms. [provided by RefSeq, Sep 2015]

**Product images:**



Circular map for RG203458