

## Product datasheet for **RG203456**

### WBP5 (TCEAL9) (NM\_001006613) Human Tagged ORF Clone

#### Product data:

**Product Type:** Expression Plasmids  
**Product Name:** WBP5 (TCEAL9) (NM\_001006613) Human Tagged ORF Clone  
**Tag:** TurboGFP  
**Symbol:** TCEAL9  
**Synonyms:** WBP5; WEX6  
**Mammalian Cell Selection:** Neomycin  
**Vector:** pCMV6-AC-GFP (PS100010)  
**E. coli Selection:** Ampicillin (100 ug/mL)  
**ORF Nucleotide Sequence:** >RG203456 representing NM\_001006613  
Red=Cloning site Blue=ORF Green=Tags(s)

TTTTGTAATACGACTCACTATAGGGCGGCCGGAATTCGTCGACTGGATCCGGTACCGAGGAGATCTGCC  
GCC**CGATCGCC**

ATGAAATCCTGTCAAAAAATGGAAGGAAAACCAGAAAATGAGAGTGAACCAAAGCATGAGGAAGAGCCAA  
AGCCTGAGGAAAAGCCAGAAGAGGAGGAGAAGCTAGAGGAGGAGGCCAAAGCAAAGGAACCTTTAGAGA  
AAGGCTGATTCAATCTCTCCAGGAGTTTAAAGAAGATATACACAACAGGCATTTAAGCAATGAAGATATG  
TTTAGAGAAGTGGATGAAATAGATGAGATAAGGAGAGTCAGAAACAACTTATAGTGATGCGTTGGAAGG  
TTAATCGAAACCATCCTTACCCATTTAATG

**ACGCGT**ACGCGGCCGCTCGAG - GFP Tag - GTTTAA

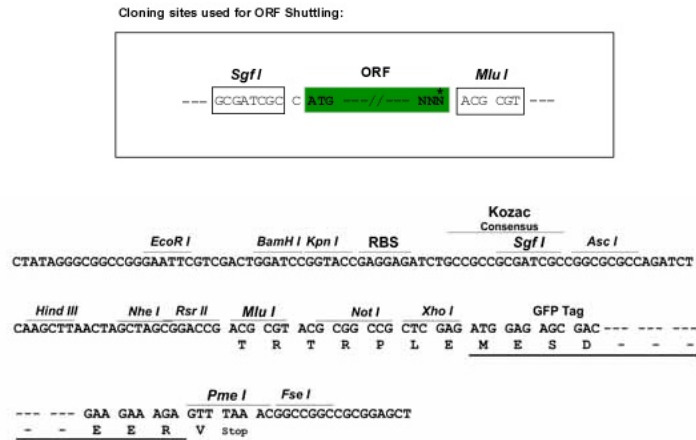
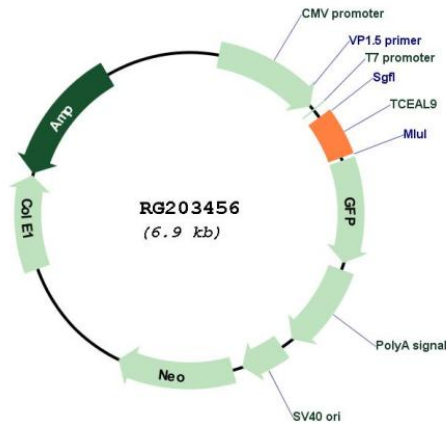
**Protein Sequence:** >RG203456 representing NM\_001006613  
Red=Cloning site Green=Tags(s)  
MKSCQKMEGKPENESEPKHEEEPKPEEKPEEEEEKLEEEAKAKGTFRERLIQSLQEFKEDIHNRHLSNEDM  
FREVDEIDEIRVRNKLIYMRWKVNRNHPYPYLM

**TRTRPLE** - GFP Tag - V

**Restriction Sites:** Sgfl-MluI



[View online »](#)

**Cloning Scheme:**

**Plasmid Map:**


**ACCN:** NM\_001006613

**ORF Size:** 312 bp

**OTI Disclaimer:** The molecular sequence of this clone aligns with the gene accession number as a point of reference only. However, individual transcript sequences of the same gene can differ through naturally occurring variations (e.g. polymorphisms), each with its own valid existence. This clone is substantially in agreement with the reference, but a complete review of all prevailing variants is recommended prior to use. [More info](#)

<b>OTI Annotation:</b>	This clone was engineered to express the complete ORF with an expression tag. Expression varies depending on the nature of the gene.
<b>Components:</b>	The ORF clone is ion-exchange column purified and shipped in a 2D barcoded Matrix tube containing 10ug of transfection-ready, dried plasmid DNA (reconstitute with 100 ul of water).
<b>Reconstitution Method:</b>	<ol style="list-style-type: none"><li>1. Centrifuge at 5,000xg for 5min.</li><li>2. Carefully open the tube and add 100ul of sterile water to dissolve the DNA.</li><li>3. Close the tube and incubate for 10 minutes at room temperature.</li><li>4. Briefly vortex the tube and then do a quick spin (less than 5000xg) to concentrate the liquid at the bottom.</li><li>5. Store the suspended plasmid at -20°C. The DNA is stable for at least one year from date of shipping when stored at -20°C.</li></ol>
<b>RefSeq:</b>	<u><a href="#">NM_001006613.2</a></u>
<b>RefSeq Size:</b>	1023 bp
<b>RefSeq ORF:</b>	315 bp
<b>Locus ID:</b>	51186
<b>UniProt ID:</b>	<u><a href="#">Q9UHQ7</a></u>
<b>Cytogenetics:</b>	Xq22.2
<b>Gene Summary:</b>	The globular WW domain is composed of 38 to 40 semiconserved amino acids shared by proteins of diverse functions including structural, regulatory, and signaling proteins. The domain is involved in mediating protein-protein interactions through the binding of polyproline ligands. This gene encodes a WW domain binding protein. This gene also encodes a domain with similarity to the transcription elongation factor A, SII-related family. Alternative splicing results in multiple transcript variants encoding a single isoform. [provided by RefSeq, Jul 2008]