

## Product datasheet for **RG203444**

### MID1IP1 (NM\_021242) Human Tagged ORF Clone

#### Product data:

**Product Type:** Expression Plasmids  
**Product Name:** MID1IP1 (NM\_021242) Human Tagged ORF Clone  
**Tag:** TurboGFP  
**Symbol:** MID1IP1  
**Synonyms:** G12-like; MIG12; S14R; STRAIT11499; THRSPL  
**Mammalian Cell Selection:** Neomycin  
**Vector:** pCMV6-AC-GFP (PS100010)  
**E. coli Selection:** Ampicillin (100 ug/mL)  
**ORF Nucleotide Sequence:** >RG203444 representing NM\_021242  
Red=Cloning site Blue=ORF Green=Tags(s)

TTTTGTAATACGACTCACTATAGGGCGCCGGGAATTCGTCGACTGGATCCGGTACCGAGGAGATCTGCC  
GCC**CGATCGCC**

ATGATGCAAACTGCGCACCTACAACCAGAAGCACTCGCTCTTTAACGCCATGAATCGCTTCATTGGCG  
CCGTGAACAACATGGACCAGACGGTGATGGTGCCAGCTTGCTGCGCGACGTGCCCTGGCTGACCCCGG  
GTTAGACAACGATGTTGGCGTGGAGGTAGGCGGCAGTGGCGGCTGCCTGGAGGAGCGCACCCCCAGTC  
CCCGACTCGGGAAGCGCAATGGCAGCTTTTTCGCGCCCTCTCGGACATGTACAGCCACTACGTGCTTC  
TCAAGTCCATCCGCAACGACATCGAGTGGGGGTCTGCACCAGCCGCCCTCCACCGGCTGGGAGCGAGGA  
GGGAGTGCCTGGAAGTCCAAGGACATCCTGGTGGACCTGGGCCACTGGAGGGTGGGACGCCGCGGAA  
GAAGACCTGGAACAGCAGTTCCTACTACCACCTGCGCGGGTGCACACTGTGCTCTCGAAACTCACGCGCA  
AAGCCAACATCCTCACTAACAGATAACAAGCAGGAGATCGGCTTCGGCAATTGGGGCCAC

**ACGCGT**ACGCGGCCGCTCGAG - GFP Tag - GTTTAA

**Protein Sequence:** >RG203444 representing NM\_021242  
Red=Cloning site Green=Tags(s)

MMQICDTYNQKHSLEFNAMNRFIVAVNNMDQTMVPSLLRDVPLADPGLDNDVGVVEVGGSGGLEERTPPV  
PDSGSANGSFFAPSRDMYSHYVLLKSIRNDIEWGVLHQPPPPAGSEEGSAWKS KDILVDLGHLEGADAGE  
EDLEQQFHYHLRGLHTVLSKLRKANILTNRYKQEIFGNWGH

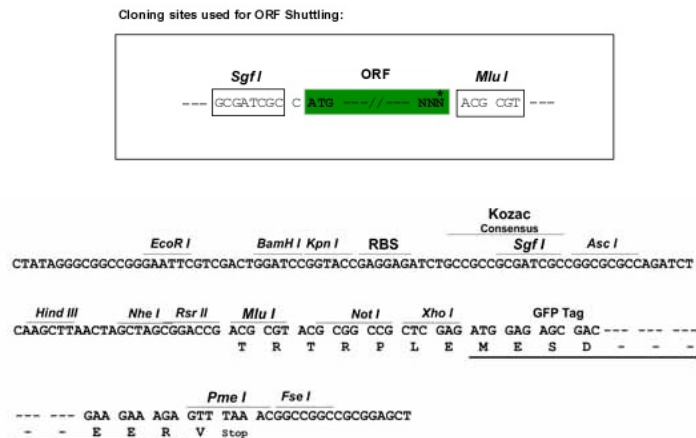
**TRTRPLE** - GFP Tag - V

**Restriction Sites:** Sgfl-MluI



[View online »](#)

## Cloning Scheme:



ACCN: NM\_021242

ORF Size: 549 bp

OTI Disclaimer: The molecular sequence of this clone aligns with the gene accession number as a point of reference only. However, individual transcript sequences of the same gene can differ through naturally occurring variations (e.g. polymorphisms), each with its own valid existence. This clone is substantially in agreement with the reference, but a complete review of all prevailing variants is recommended prior to use. [More info](#)

OTI Annotation: This clone was engineered to express the complete ORF with an expression tag. Expression varies depending on the nature of the gene.

Components: The ORF clone is ion-exchange column purified and shipped in a 2D barcoded Matrix tube containing 10ug of transfection-ready, dried plasmid DNA (reconstitute with 100 ul of water).

Reconstitution Method:

1. Centrifuge at 5,000xg for 5min.
2. Carefully open the tube and add 100ul of sterile water to dissolve the DNA.
3. Close the tube and incubate for 10 minutes at room temperature.
4. Briefly vortex the tube and then do a quick spin (less than 5000xg) to concentrate the liquid at the bottom.
5. Store the suspended plasmid at -20°C. The DNA is stable for at least one year from date of shipping when stored at -20°C.

RefSeq: [NM\\_021242.5](#)

RefSeq Size: 2372 bp

RefSeq ORF: 552 bp

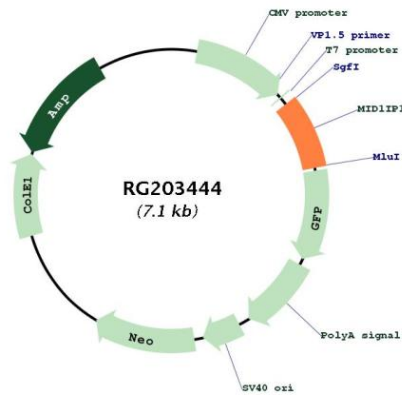
Locus ID: 58526

UniProt ID: [Q9NPA3](#)

Cytogenetics: Xp11.4

Gene Summary: Plays a role in the regulation of lipogenesis in liver. Up-regulates ACACA enzyme activity. Required for efficient lipid biosynthesis, including triacylglycerol, diacylglycerol and phospholipid. Involved in stabilization of microtubules (By similarity).[UniProtKB/Swiss-Prot Function]

### Product images:



Circular map for RG203444