

Product datasheet for **RG203440**

C2orf28 (ATRAID) (NM_016085) Human Tagged ORF Clone

Product data:

Product Type: Expression Plasmids
Product Name: C2orf28 (ATRAID) (NM_016085) Human Tagged ORF Clone
Tag: TurboGFP
Symbol: C2orf28
Synonyms: APR--3; APR-3; APR3; C2orf28; HSPC013; p18; PRO240
Mammalian Cell Selection: Neomycin
Vector: pCMV6-AC-GFP (PS100010)
E. coli Selection: Ampicillin (100 ug/mL)
ORF Nucleotide Sequence: >RG203440 representing NM_016085
 Red=Cloning site Blue=ORF Green=Tags(s)

TTTTGTAATACGACTCACTATAGGGCGGCCGGAATTCGTCGACTGGATCCGGTACCGAGGAGATCTGCC
 GCC**CGATCGCC**

ATGCTGCATGCCGTTGCTGCCTGAATCAGAAGGGCACCATCTTGGGGCTGGATCTCCAGAACTGTTCTC
 TGGAGGACCCTGGTCCAAACTTTTCATCAGGCACATACCACTGTCATCATAGACCTGCAAGCAAACCCCT
 CAAAGGTGACTTGGCCAACACCTTCCGTGGCTTTACTCAGCTCCAGACTCTGATACTGCCACAACATGTC
 AACTGCTCCTGGAGGAATTAATGCCTGGAATACTATCACCTTTATATAGACAACCAAATCTGTCAAGGGC
 AAAAGAACCTTTGCAATAACACTGGGGACCCAGAAATGTGTCCTGAGAATGGATCTTGTGTACCTGATGG
 TCCAGGTCTTTTGCAGTGTGTTTGTGCTGATGGTTTCCATGGATACAAGTGTATGCGCCAGGGCTCGTTC
 TCACTGCTTATGTTCTTCGGGATTCTGGGAGCCACCACCTATCCGTCTCCATTCTGCTTTGGGGACCC
 AGCGCCGAAAAGCCAAGACTTCA

ACGCGTACGCGGGCCGCTCGAG - GFP Tag - GTTTAA

Protein Sequence: >RG203440 representing NM_016085
 Red=Cloning site Green=Tags(s)

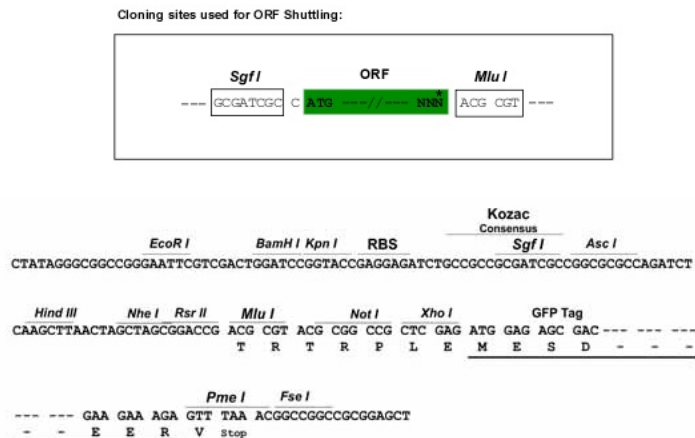
MLHARCLNQGKTIILGLDLQNCLEDPGNFHAHTTVIIDLQANPLKGDLANFRGFTQLQTLILPQHV
 NCPGGINAWNTITSYIDNQICQGQKNLCNNTGDPMECPENGSCVPDGPGLLQCVCADGFHGYKCMRQGSF
 SLLMFFGILGATLSVSIILLWATQRRKAKTS

TRTRPLE - GFP Tag - V

Restriction Sites: Sgfl-MluI



[View online >](#)

Cloning Scheme:


ACCN: NM_016085

ORF Size: 513 bp

OTI Disclaimer: The molecular sequence of this clone aligns with the gene accession number as a point of reference only. However, individual transcript sequences of the same gene can differ through naturally occurring variations (e.g. polymorphisms), each with its own valid existence. This clone is substantially in agreement with the reference, but a complete review of all prevailing variants is recommended prior to use. [More info](#)

OTI Annotation: This clone was engineered to express the complete ORF with an expression tag. Expression varies depending on the nature of the gene.

Components: The ORF clone is ion-exchange column purified and shipped in a 2D barcoded Matrix tube containing 10ug of transfection-ready, dried plasmid DNA (reconstitute with 100 ul of water).

Reconstitution Method:

1. Centrifuge at 5,000xg for 5min.
2. Carefully open the tube and add 100ul of sterile water to dissolve the DNA.
3. Close the tube and incubate for 10 minutes at room temperature.
4. Briefly vortex the tube and then do a quick spin (less than 5000xg) to concentrate the liquid at the bottom.
5. Store the suspended plasmid at -20°C. The DNA is stable for at least one year from date of shipping when stored at -20°C.

RefSeq: [NM_016085.5](#)

RefSeq Size: 1417 bp

RefSeq ORF: 516 bp

Locus ID: 51374

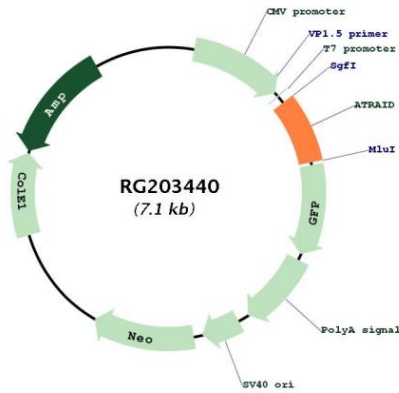
UniProt ID: [Q6UW56](#)

Cytogenetics: 2p23.3

Protein Families: Druggable Genome, Transmembrane

Gene Summary: This gene is thought to be involved in apoptosis, and may also be involved in hematopoietic development and differentiation. The use of alternative splice sites and promoters result in multiple transcript variants encoding different isoforms.[provided by RefSeq, Dec 2009]

Product images:



Circular map for RG203440