

Product datasheet for **RG203439**

Hsp75 (TRAP1) (NM_016292) Human Tagged ORF Clone

Product data:

Product Type:	Expression Plasmids
Product Name:	Hsp75 (TRAP1) (NM_016292) Human Tagged ORF Clone
Tag:	TurboGFP
Symbol:	Hsp75
Synonyms:	HSP 75; HSP75; HSP90L; TRAP-1
Mammalian Cell Selection:	Neomycin
Vector:	pCMV6-AC-GFP (PS100010)
E. coli Selection:	Ampicillin (100 ug/mL)



[View online »](#)

ORF Nucleotide Sequence:

>RG203439 representing NM_016292
 Red=Cloning site Blue=ORF Green=Tags(s)

TTTTGTAATACGACTCACTATAGGGCGGCCGGAATTCGTCGACTGGATCCGGTACCGAGGAGATCTGCC
 GCC**CGGATCGCC**

ATGGCGCGGAGCTGCGGGCGTCTGCTGTGGGGCCCGCCTGCGGCCTTTGCTGCGGGCGCCGGCGC
 TGGCGGCCGTGCCGGGAGGAAAACCAATTCTGTGTCTCGGAGGACCACAGCCCAGTTGGGCCCCAGGCG
 AAACCCAGCCTGGAGCTTGCAGGCAGGACGACTGTTCCAGCACGCAGACCCCGAGGACAAGGAGGAACCC
 CTGCACTCGATTATCAGCAGCACAGAGAGCGTGCAGGGTTCCTACTTCAAACATGAGTTCAGGCCGAGA
 CAAAGAAGCTTTTGGACATTGTTGCCCGTCCCTGTACTCAGAAAAAGAGGTGTTTATACGGGAGCTGAT
 CTCCAATGCCAGCGATGCCTTGGAAAACTGCGTCACAACTGGTGTCTGACGGCCAAGCACTGCCAGAA
 ATGGAGATTCACTGCAGACCAATGCCGAGAAAGGCACCATCACCATCCAGGATACTGGTATCGGGATGA
 CACAGGAAGAGCTGGTGTCCAACCTGGGACGATTGCCAGATCGGGGTCAAAGGCCTTCTGGATGCTCT
 GCAGAACCAGGCTGAGGCCAGCAGCAAGATCATCGGCCAGTTTGGAGTGGTTTTCTACTCAGCTTTCATG
 GTGGCTGACAGAGTGGAGTCTATTCGCCCTCGGCAGCCCCGGGAGCCTGGGTTACCAAGTGGCTTTCAG
 ATGGTTCTGGAGTGTGAAATCGCCGAAGCTTCGGGAGTTAGAACCAGGACAAAATATCATCCACCT
 GAAATCCGACTGCAAGGAGTTTTCCAGCGAGGCCCGGGTGCAGATGTGGTAACGAAGTACAGCAACTTC
 GTCAGCTTCCCCTTGTACTTGAATGGAAGGCGGATGAACACCTTCAGGCCATCTGGATGATGGACCCCA
 AGGATGTCGTGAGTGGCAACATGAGGAGTCTACCGCTACGTCGCGCAGGCTCACGACAAGCCCCGCTA
 CACCCTGCACTATAAGACGGACGACCGCTCAACATCCGACGATCTTCTACGTGCCGACATGAAACCG
 TCCATGTTGATGTGAGCCGGGAGCTGGCTCCAGCGTTCAGCTGTACAGCCGAAAGTCCCTCATCCAGA
 CCAAGGCCACGGACATCCTGCCAAGTGGCTGCGCTTCCATCCGAGGTGTGGTGGACAGTGGAGACATTC
 CCTGAACCTCAGCCGGGAGCTGCTGCAGGAGAGCGCACTCATCAGGAAACTCCGGGACGTTTTACAGCAG
 AGGCTGATCAAATCTTTCATTGACCAGAGTAAAAAAGATGCTGAGAAGTATGCAAAGTTTTTTGAAGATT
 ACGGCCTGTTTCATGCGGGAGGGCATTGTGACCGCCACCGAGCAGGAGGTCAAGGAGGACATAGCAAAGCT
 GCTGCGCTACGAGTCTCGGCGCTGCCCTCCGGGAGCTAACCAGCCTCTCAGAAACGCCAGCCGATG
 CGGGCCGGCACCCGCAACATCTACTACCTGTGCGCCCCAACCGTCACTGGCAGAGCACTACCCTACT
 ATGAGGCCATGAAGAAGAAAGACACAGAGGTTCTCTTCTGCTTTGAGCAGTTTGTGAGCTCACCCTGCT
 GCACCTTCGTGAGTTTGACAAGAAGAAGCTGATCTCTGTGGAGACGGACATAGTCGTGGATCACTACAAG
 GAGGAGAAGTTTGAGGACAGTCCCAGCCGCGAGTGCCTATCAGAGAAGGAGACGGAGGAGCTCATGG
 CCTGGATGAGAAATGTGCTGGGGTGCCTGTACCAACGTGAAGGTGACCCTCCGACTGGACACCCACCC
 TGCCATGGTCACCGTGTGGAGATGGGGCTGCCCGCCACTTCTGCGCATGCAGCAGCTGGCCAAGACC
 CAGGAGGAGCGCGCACAGCTCCTGCAGCCACGCTGGAGATCAACCCAGGCACGCGCTCATCAAGAAGC
 TGAATCAGCTGCGCGCAAGCAGCCTGGCTGGCTCAGCTGCTGGTGGATCAGATATACGAGAACGCCAT
 GATTGCTGCTGGACTTGTGACGACCCTAGGGCCATGGTGGGCCGCTTGAATGAGCTGCTTGTCAAGGCC
 CTGGAGCGACAC

ACGCGTACGCGGCCGCTCGAG – GFP Tag – GTTTAA

Protein Sequence: >RG203439 representing NM_016292
 Red=Cloning site Green=Tags(s)

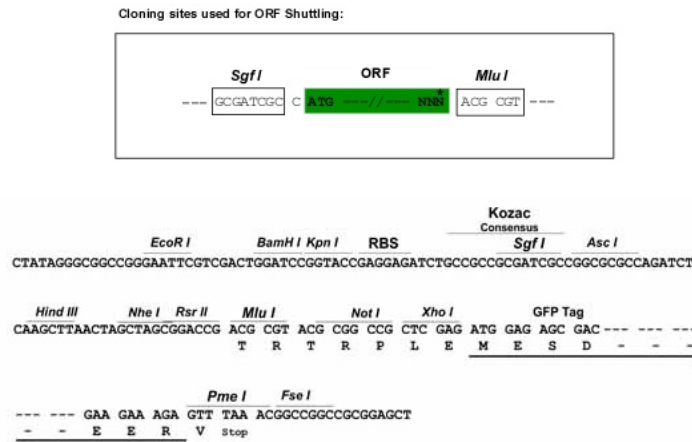
MARELRALLLWGRRLRPLLAPALAAVPGGKPILCPRRTTAQLGPRRNPAWSLQAGRLFSTQTAEDKEEP
 LHSIISSTESVQGSTSKHEFQAETKLLDIVARSLYSEKEVFIRELISNASDALEKLRHKLVSDDGQALPE
 MEIHLQTNAEKGTITIQDTGIGMTQEELVSNLGTIARSGSKAFDALQNQAEASSKIIGQFVGFYSAFM
 VADRVVYSRSAAPGSLGYQWLSDGSVFEIAEASGVRTGKIIHLKSDCKEFSSEARVRDVVTKYSNF
 VSFPLYLNGRRMNTLQAIWMMPKDVREWQHEEFYRYVAQAHDKPRYTLHYKTDAPLNIRSFYVPMKP
 SMFDVSRELGSSVALYSRKVLIQTKATDILPKWLRFIRGVVDEDIPLNLSRELLQESALIRKLRDVLQQ
 RLKIFFIDQSKKDAEKYAKFFEDYGLFMREGIVTATEQEVKEDIAKLLRYESSALPSGQLTSLSEYASRM
 RAGTRNIYYLCAPNRHLAEHSPYEAAMKKKDTEVLCFEQFDEL TLLHLREFDKKLLISVETDIVVDHYK
 EEKFEDRSPAACLSEKETEELMAWMNRNLGSRVTNVKVTLRDLTHPAMVTVLEMGAAHRFLRMQQLAKT
 QEERAQLLOPTLEINPRHALIKKLNQLRASEPGLAQLLVDQIYENAMIAAGLVDDPRAMVGRLNELLVKA
 LERH

TRTRPLE - GFP Tag - V

Restriction Sites:

SgfI-MluI

Cloning Scheme:

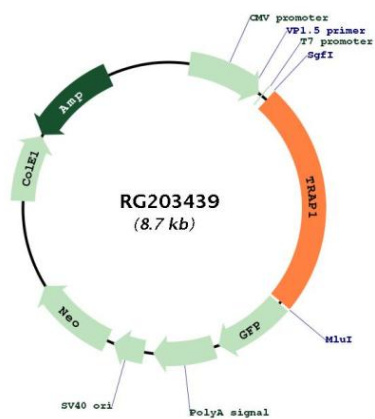


ACCN: NM_016292

ORF Size: 2112 bp

OTI Disclaimer:	<p>Due to the inherent nature of this plasmid, standard methods to replicate additional amounts of DNA in E. coli are highly likely to result in mutations and/or rearrangements. Therefore, OriGene does not guarantee the capability to replicate this plasmid DNA. Additional amounts of DNA can be purchased from OriGene with batch-specific, full-sequence verification at a reduced cost. Please contact our customer care team at custsupport@origene.com or by calling 301.340.3188 option 3 for pricing and delivery.</p> <p>The molecular sequence of this clone aligns with the gene accession number as a point of reference only. However, individual transcript sequences of the same gene can differ through naturally occurring variations (e.g. polymorphisms), each with its own valid existence. This clone is substantially in agreement with the reference, but a complete review of all prevailing variants is recommended prior to use. More info</p>
OTI Annotation:	This clone was engineered to express the complete ORF with an expression tag. Expression varies depending on the nature of the gene.
Components:	The ORF clone is ion-exchange column purified and shipped in a 2D barcoded Matrix tube containing 10ug of transfection-ready, dried plasmid DNA (reconstitute with 100 ul of water).
Reconstitution Method:	<ol style="list-style-type: none"> 1. Centrifuge at 5,000xg for 5min. 2. Carefully open the tube and add 100ul of sterile water to dissolve the DNA. 3. Close the tube and incubate for 10 minutes at room temperature. 4. Briefly vortex the tube and then do a quick spin (less than 5000xg) to concentrate the liquid at the bottom. 5. Store the suspended plasmid at -20°C. The DNA is stable for at least one year from date of shipping when stored at -20°C.
RefSeq:	NM_016292.3
RefSeq Size:	2225 bp
RefSeq ORF:	2115 bp
Locus ID:	10131
UniProt ID:	Q12931
Cytogenetics:	16p13.3
Domains:	HSP90, HATPase_c
Protein Families:	Druggable Genome
Gene Summary:	This gene encodes a mitochondrial chaperone protein that is member of the heat shock protein 90 (HSP90) family. The encoded protein has ATPase activity and interacts with tumor necrosis factor type I. This protein may function in regulating cellular stress responses. Alternate splicing results in multiple transcript variants. [provided by RefSeq, Jan 2013]

Product images:



Circular map for RG203439