

Product datasheet for **RG203428**

BRMS1 (NM_015399) Human Tagged ORF Clone

Product data:

Product Type: Expression Plasmids
Product Name: BRMS1 (NM_015399) Human Tagged ORF Clone
Tag: TurboGFP
Symbol: BRMS1
Mammalian Cell Selection: Neomycin
Vector: pCMV6-AC-GFP (PS100010)
E. coli Selection: Ampicillin (100 ug/mL)
ORF Nucleotide Sequence: >RG203428 representing NM_015399
Red=Cloning site Blue=ORF Green=Tags(s)

TTTTGTAATACGACTCACTATAGGGCGGCCGGGAATTCGTCGACTGGATCCGGTACCGAGGAGATCTGCC
GCC**CGATCGCC**

ATGCCTGTCCAGCCTCAAGCAAAGACACAGAAGAGATGGAAGCAGAGGGTGATTCTGCTGCTGAGATGA
ATGGGGAGGAGGAAGAGAGTGAGGAGGAGCGGAGCGGCAGCCAGACAGAGTCAGAAGAGGAGAGCTCCGA
GATGGATGATGAGGACTATGAGCGACGCCCGCAGCGAGTGTGTGAGTGTGCTGGACCTAGAGAAGCAG
TTCTCGGAGCTAAAGGAGAAGTTGTTTACAGGAACGACTGAGTCACTGCGGTTGCGGTTGGAGGAAGTGG
GGGCTGAGAGAGCCCTGAATACACGGAGCCCTTGGGGGGCTGCAGCGGAGCCTCAAGATTCGCATTCA
GGTGGCAGGGATCTACAAGGGCTTCTGTCTGGATGTGATCAGGAATAAGTACGAATGTGAGCTGCAGGGA
GCCAAACAGCACCTGGAGAGTGAGAAGCTGCTGCTCTATGACACGCTGCAGGGGGAGCTGCAGGAGCGGA
TCCAGAGGCTGGAGGAGGACCGCCAGAGCCTGGATCTCAGCTCTGAATGGTGGGACGACAACTGCACGC
CAGAGGCAGCTCCAGGTCTTGGGACTCCCTGCCGCCAGCAAGAGGAAGAAGGCACCTCTGGTTTCTGGC
CCATACATCGTGTACATGCTTCAAGAGATCGACATCCTGGAGGACTGGACAGCCATCAAAAAGGCTAGGG
CAGCTGTGTCCCCTCAGAAGAGAAAATCGGATGGACCT

ACGCGTACGCGGCCGCTCGAG - GFP Tag - GTTTAA

Protein Sequence: >RG203428 representing NM_015399
Red=Cloning site Green=Tags(s)

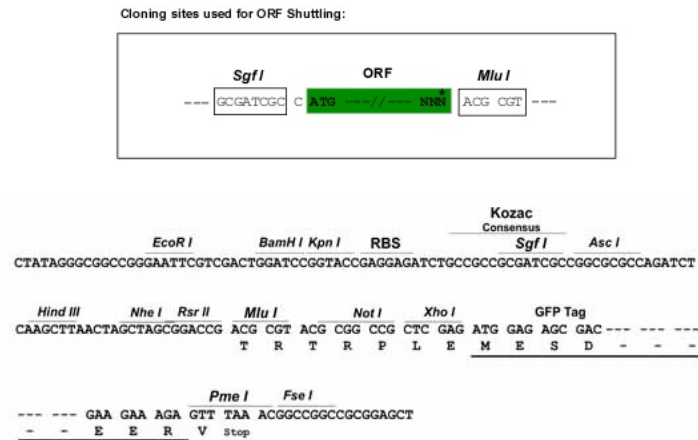
MPVQPPSKDTEEMAEAGDSAAEMNGEEEESEERSGSQTESEESSEMDDYERRRSECVSEMLDLEKQ
FSELKEKLFRRERLSQLRLRLLEEVAERAPEYTEPLGGLQRSLKIRIQVAGIYKGFCLDVIRNKYECQLQ
AKQHLESEKLLL YDTLQGELQERIQRLEEDRQSLDL SSEWDDKLHARGSSRSWDSLPPSKRKKAPLVSG
PYIVYMLQEIDILEDWTAIKKARAAVSPQKRKSDGP

TRTRPLE - GFP Tag - V



Restriction Sites: SgfI-MluI

Cloning Scheme:



ACCN: NM_015399

ORF Size: 738 bp

OTI Disclaimer: The molecular sequence of this clone aligns with the gene accession number as a point of reference only. However, individual transcript sequences of the same gene can differ through naturally occurring variations (e.g. polymorphisms), each with its own valid existence. This clone is substantially in agreement with the reference, but a complete review of all prevailing variants is recommended prior to use. [More info](#)

OTI Annotation: This clone was engineered to express the complete ORF with an expression tag. Expression varies depending on the nature of the gene.

Components: The ORF clone is ion-exchange column purified and shipped in a 2D barcoded Matrix tube containing 10ug of transfection-ready, dried plasmid DNA (reconstitute with 100 ul of water).

Reconstitution Method:

1. Centrifuge at 5,000xg for 5min.
2. Carefully open the tube and add 100ul of sterile water to dissolve the DNA.
3. Close the tube and incubate for 10 minutes at room temperature.
4. Briefly vortex the tube and then do a quick spin (less than 5000xg) to concentrate the liquid at the bottom.
5. Store the suspended plasmid at -20°C. The DNA is stable for at least one year from date of shipping when stored at -20°C.

Note: Plasmids are not sterile. For experiments where strict sterility is required, filtration with 0.22um filter is required.

RefSeq: [NM_015399.3](#), [NP_056214.1](#)

RefSeq Size: 1455 bp

RefSeq ORF: 741 bp

Locus ID: 25855

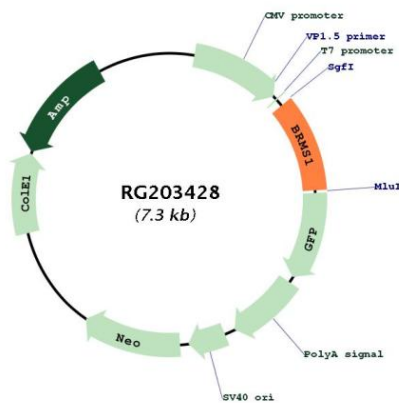
UniProt ID: [Q9HCU9](#)

Cytogenetics: 11q13.2

Protein Families: Druggable Genome

Gene Summary: This gene reduces the metastatic potential, but not the tumorigenicity, of human breast cancer and melanoma cell lines. The protein encoded by this gene localizes primarily to the nucleus and is a component of the mSin3a family of histone deacetylase complexes (HDAC). The protein contains two coiled-coil motifs and several imperfect leucine zipper motifs. Alternative splicing results in two transcript variants encoding different isoforms. [provided by RefSeq, Jul 2008]

Product images:



Circular map for RG203428