

## Product datasheet for **RG203411**

### **RDH14 (NM\_020905) Human Tagged ORF Clone**

#### Product data:

**Product Type:** Expression Plasmids  
**Product Name:** RDH14 (NM\_020905) Human Tagged ORF Clone  
**Tag:** TurboGFP  
**Symbol:** RDH14  
**Synonyms:** PAN2; SDR7C4  
**Mammalian Cell Selection:** Neomycin  
**Vector:** pCMV6-AC-GFP (PS100010)  
**E. coli Selection:** Ampicillin (100 ug/mL)  
**ORF Nucleotide Sequence:** >RG203411 representing NM\_020905  
**Red=Cloning site Blue=ORF Green=Tags(s)**

TTTTGTAATACGACTCACTATAGGGCGGCCGGAATTCGTCGACTGGATCCGGTACCGAGGAGATCTGCC  
GCC**CGATCGCC**

ATGGCAGTGGCCACTGCGCGCCAGTACTGGCCGCTCTGGGCGGGCGCTGTGGCTGGCGGCCCGCCGGT  
TCGTGGGGCCAGGGTCCAGCGGCTGCGCAGAGGCGGGACCCCGCCTCATGCACGGGAAGACTGTGCT  
GATCACCGGGGCGAACAGCGGCTGGGCCGCGCCACGGCCCGGAGCTACTGCGCCTGGGAGCGCGGGT  
ATCATGGGCTGCCGGGACCGCGCGCGCCGAGGAGCGGGTGTGAGTCCGCCGAGCTCCGCCAGG  
CCGCGGAGTGCAGCCAGAGCCTGGCGTCAGCGGGTGGGCGAGCTCATAGTCCGGGAGCTGGACCTCGC  
CTCGCTGCGCTCGGTGCGCGCCTTCTGCCAGGAAATGCTCCAGGAAGAGCCTAGGCTGGATGTCTTGATC  
AATAACGCAGGGATCTTCCAGTGCCTTACATGAAGACTGAAGATGGGTTTGAGATGCAGTTCGGAGTGA  
ACCATCTGGGGCACTTTCTACTACCAATCTTCTCCTTGGACTCCTCAAAGTTTCAAGTCCCAGCAGGAT  
TGTGGTAGTTTCTTCAAACCTTATAAATACGGAGACATCAATTTTGTGACTTGAACAGTGAACAAAGC  
TATAATAAAAGCTTTTGTATAGCCGGAGCAAACCTGGCTAACATCTTTTTACCAGGGAAGTACCCCGCC  
GCTTAGAAGGCACAAATGTCACCGTCAATGTGTGCATCCTGGTATTGTACGGACAAATCTGGGGAGGCA  
CATACACATTCCACTGTTGGTCAAACACTCTTCAATTTGGTGTGATGGGCTTTTTTCAAACCTCCAGTA  
GAAGGTGCCAGACTTCCATTTATTTGGCCTCTCACCTGAGGTAGAAGGAGTGTGAGGAGGATCTTTG  
GGGATGTAAAGAGGAAGAACTGTTGCCAAAGCTATGGATGAATCTGTTGCAAGAAAACCTCTGGGATAT  
CAGTGAAGTGATGGTTGGCCTGCTAAAA

**ACGCGTACGCGGCCGCTCGAG - GFP Tag - GTTTAA**



[View online »](#)

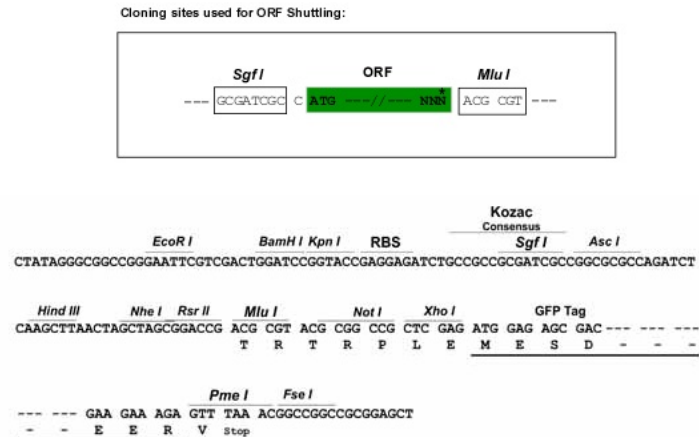
**Protein Sequence:** >RG203411 representing NM\_020905  
 Red=Cloning site Green=Tags(s)

MAVATAAAVLAALGGALWLAARRFVGPVQRLRRGGDPGLMHGKTVLITGANSGLGRATAAELLRLGARV  
 IMGCRDRARAEAAAGQLRRELQAAECGPEPGVSGVVELIVRELDLASLRSVRAFQEMLQEEPRLDVL I  
 NNAGIFQCPYMKTEDGFEMQFGVNHLLGHFLLTNLLLGLLKSAPSRIVVVSSKL YKYGDINFDLNLSEQS  
 YNKSFCYSRSLANILFTRELARRLEGTNVTNVLHPGIVRTNLGRHIHIPLLVKPLFNLVSWAFFKTPV  
 EGAQTSIYLASSPEVEGVSGRYFGDCKEEELLPKAMDES VARKLWDI SEVMVGLLK

TRTRPLE - GFP Tag - V

**Restriction Sites:** SgfI-MluI

**Cloning Scheme:**



**ACCN:** NM\_020905

**ORF Size:** 1008 bp

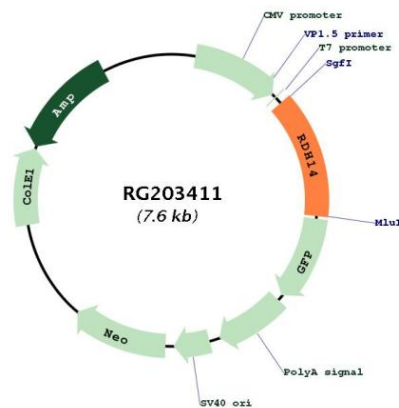
**OTI Disclaimer:** The molecular sequence of this clone aligns with the gene accession number as a point of reference only. However, individual transcript sequences of the same gene can differ through naturally occurring variations (e.g. polymorphisms), each with its own valid existence. This clone is substantially in agreement with the reference, but a complete review of all prevailing variants is recommended prior to use. [More info](#)

**OTI Annotation:** This clone was engineered to express the complete ORF with an expression tag. Expression varies depending on the nature of the gene.

**Components:** The ORF clone is ion-exchange column purified and shipped in a 2D barcoded Matrix tube containing 10ug of transfection-ready, dried plasmid DNA (reconstitute with 100 ul of water).

<b>Reconstitution Method:</b>	<ol style="list-style-type: none"><li>1. Centrifuge at 5,000xg for 5min.</li><li>2. Carefully open the tube and add 100ul of sterile water to dissolve the DNA.</li><li>3. Close the tube and incubate for 10 minutes at room temperature.</li><li>4. Briefly vortex the tube and then do a quick spin (less than 5000xg) to concentrate the liquid at the bottom.</li><li>5. Store the suspended plasmid at -20°C. The DNA is stable for at least one year from date of shipping when stored at -20°C.</li></ol>
<b>RefSeq:</b>	<a href="#">NM_020905.4</a>
<b>RefSeq Size:</b>	1538 bp
<b>RefSeq ORF:</b>	1011 bp
<b>Locus ID:</b>	57665
<b>UniProt ID:</b>	<a href="#">Q9HBH5</a>
<b>Cytogenetics:</b>	2p24.2
<b>Domains:</b>	adh_short
<b>Protein Families:</b>	Druggable Genome, Transmembrane
<b>Gene Summary:</b>	Retinol dehydrogenase with a clear preference for NADP. Displays high activity towards 9-cis, 11-cis and all-trans-retinol. Shows a very weak activity towards 13-cis-retinol. Has no activity towards steroid.[UniProtKB/Swiss-Prot Function]

### Product images:



Circular map for RG203411