

Product datasheet for **RG203391**

ASCC2 (NM_032204) Human Tagged ORF Clone

Product data:

Product Type:	Expression Plasmids
Product Name:	ASCC2 (NM_032204) Human Tagged ORF Clone
Tag:	TurboGFP
Symbol:	ASCC2
Synonyms:	ASC1p100; p100
Mammalian Cell Selection:	Neomycin
Vector:	pCMV6-AC-GFP (PS100010)
E. coli Selection:	Ampicillin (100 ug/mL)



[View online »](#)

ORF Nucleotide Sequence:

>RG203391 representing NM_032204
 Red=Cloning site Blue=ORF Green=Tags(s)

TTTTGTAATACGACTCACTATAGGGCGGCCGGAATTCGTGACTGGATCCGGTACCGAGGAGATCTGCC
 GCC**GCGATCGCC**

ATGCCAGTCTGCCCTGGACCACTCCAGATCACCCACAAGGACCCGAAGACAGGAAAGCTGAGGACTT
 CACCAGCGCTGCACCCCGAGCAGAAGGCAGACCGGTATTTTGTGTTATACAAACCGCCCTAAAGACAA
 CATTCCCGCCCTAGTGGAGGAGTACCTGGAACGCGCCACCTTCGTAGCCAATGACCTCGACTGGCTCCTG
 GCCTTGCCTCACGATAAATTCTGGTGCCAGGTGATCTTTGACGAGACTCTACAGAAGTGCCTGGACTCCT
 ACCTGCGCTATGTCCCGCAAATTCGACGAGGGGGTGGCCTCAGCCCTGAGGTTGTTGACATGCAGAA
 GCGCCTCCATCGAAGTGTTCCTCACCTTCTCCGCATGTCCACTCACAAGGAATCCAAAGATCACTTC
 ATTTCCCTTCTGCGTTTGGAGAAATCCTCTACAATAACTTCTCTTTGACATTCCAAAGATCCTGGACC
 TCTGCGTCTTTGGAAAAGGCAACTCACCAGTCTCCAGAAGATGATAGGAAACATCTTACACAGCA
 GCCAAGTTACTACAGTGCCTGGATGAAACCTGCCTACCATCCTCAGGTCTTCAGCAATATCCTCCAG
 CACTGTGGTTTGAAGGGGACGGGGCAATACCACACCCAGAAGCTTGAGGAGAGGGGGCGGATTGACCC
 CCAAGTGCATGCCTCTCCTGGAATTAAGGACATTGTTCTCTACCTTTGTGATACCTGCACCACACTTTG
 GCCTTTCTGGATATCTCCCTTTGGCTTGCCAGACCTTCAGAAAGCAGACTTTTGTACAGACTAGCT
 TCCTTCTACGAAGCAGCAATCCCGAAATGGAGTCTGCAATTAAGAAGAGGAGGCTTGAAGATAGCAAGC
 TTCTTGGTGACCTGTGGCAGAGGCTCTCCCATTCAGGAAGAAGCTAATGGAGATTTTCCACATCATCT
 GAACAGATCTGCCTCCTCCCATCCTAGAAAGCAGCTGTGACAACATTCAGGGCTTCATCGAAGAGTTC
 CTTAGATCTTCAGCTCCTTGTGCAGGAGAAGAGGTTCTCCGGGACTATGATGCACTTCCCCGTGG
 CCGAAGACATCAGCTTGTGCAGCAGGCTCATCAGTCTTGGACGAGACGCGGACTGCCTACATCCTCCA
 GGCAGTCGAGAGTGCATGGGAAGGGTGGACAGACGGAAGCCACAGATGCTAAAGACCCATCGGTGATT
 GAGGAGCCTAATGGGAGCCTAACGGGGTACGGTGACAGCAGAGGCAGTCAGTCAAGCATCATCACATC
 CGGAGAACTCGGAGGAAGAGGAGTGCATGGGAGCAGCCGCGCTGTGGCCCTGCCATGTGTGGGTGGA
 ACTGGACTCTCATCTCCAAGTGAAGGACCTGCTGCCAGACCTTGGTGGGGCTTCATCCTGGCCTGC
 CTGGAGTACTACCACTACGACCCAGAGCAGGTGATCAACAATATCCTGGAGGAGCGGCTGGCCCCACCC
 TCAGCCAGCTGGACCGCAACCTAGACAGAGAAATGAAACCAGACCCTACACCCCTGCTGACGTCTCGCCA
 CAACGTCTCCAGAATGACGAGTTTGTGTGTTGAGCAGGACTCAGTAGACCTGAGCCGGGTGCACAAG
 GGCAAGAGCACCAGGAAGGAGGAAAACACGCGGAGTTTGTGTAACGACAAGCGTGCAGTGGCGGCACAGC
 GGCAGCGCTACGAGCAGTACAGCGTGGTGGTGGAGGAGTGCCTGCAGCCAGGCGAGAGCCTGCCCTA
 CCACAGTGTCTACTACGAGGATGAGTACGATGACACATACGATGGCAACCAGGTGGGCGCCAATGATGCA
 GACTCTGATGACGAGCTCATCAGCCGAGGCCATTACCATCCCTCAGGTGCTGAGAACCAAGTGCCTA
 GAGAAGGGCAGGAGGAGGATGACGACGATGAGGAAGACGATGCTGACGAGGAGGCTCCCAAGCCGACCA
 TTTTGTTCAGGACCTGCAGTGTGAGAGAGAAGGCAGAAAGCCAGGCGCATGGCCTTCTCGCAAGAAA
 GGGTACCGGCATGACAGCTCAACAGCAGTGGCCGGCAGCCCCGAGGCCATGGGCAGAGCCGCGAGACAA
 CCCAGGAACGCAGGAAGAAGGAAGCCAAACAGGCGACAAGAGCCAACCAACCGGAGAACCATGGCCGA
 CCGCAAGAGGAGCAAAGGCATGATCCCATCC

ACGCGTACGCGGCCGCTCGAG - GFP Tag - GTTTAA

Protein Sequence: >RG203391 representing NM_032204
 Red=Cloning site Green=Tags(s)

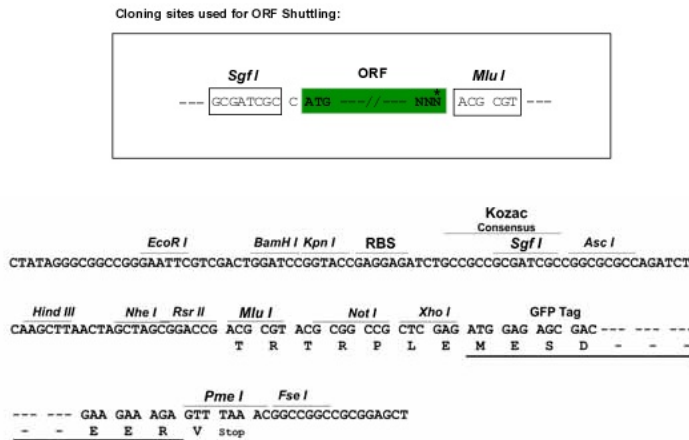
```

MPALPLDQLQITHKDPKTKGLRTSPALHPEQKADRYFVLKPPPKDNIPALVEEYLERATFVANDLDWLL
ALPHDKFWCQVIFDETLQKCLDSYLRYVPRKFDEGVASAPEVVDQMQRHLRSVFLTFLRMSTHKESKDH
ISPSAFGEILYNNFLFDIPKILDLCVLFKGNPPLLQKMGIGNIFTQQPSYSDLDELPTILQVFSNIIQ
HCGLQGDGANTTPQKLEERGRTPSDMPLELKDIVLYLCDTCTTLWAFLDIFPLACQTFQKHDFCYRLA
SFYEAAIPEMESAIKRRLEDSKLLGDLWQRLSHSRKKLMEIFHIILNQICLLPILESSCDNIQGFIEEF
LQIFSSLLQEKRFLRDYDALFPVAEDISLLQQASSVLDERTAYILQAVESAWEGVDRRKATDAKDP
SVIEEPNGEPNGVTVAEAVSQASSHPENSEEEEECMGAAAAVGPAMCGVELDSLISQVKDLLPDLGEGF
ILACLEYYHYDPEQVINNIIEERLAPTLSQLDRNLDREMKPDPPTLLTSRHNVFQNFDFVFSRDSV
DLRSVHKGKSTRKEENTRSLNDRKRAVAAQRQRYEQYSVVVEEVPLQPGESLPYHSVYVEDEYDDT
YDGNQV GANDA DSDDELISRRPFTIPQVLR TKVPREGQEEDDDDEEDDADEEAPKPDHFVQDP
AVLREKAEARRMAFLAKKGYRHDSS TAVAGSPRGHGQSRETTQERRKKEANKATRANHNRRTMADR
KRSKGMIP
  
```

TRTRPLE - GFP Tag - V

Restriction Sites: SgfI-MluI

Cloning Scheme:



ACCN: NM_032204

ORF Size: 2271 bp

OTI Disclaimer: The molecular sequence of this clone aligns with the gene accession number as a point of reference only. However, individual transcript sequences of the same gene can differ through naturally occurring variations (e.g. polymorphisms), each with its own valid existence. This clone is substantially in agreement with the reference, but a complete review of all prevailing variants is recommended prior to use. [More info](#)

OTI Annotation: This clone was engineered to express the complete ORF with an expression tag. Expression varies depending on the nature of the gene.

Components: The ORF clone is ion-exchange column purified and shipped in a 2D barcoded Matrix tube containing 10ug of transfection-ready, dried plasmid DNA (reconstitute with 100 ul of water).

Reconstitution Method:

1. Centrifuge at 5,000xg for 5min.
2. Carefully open the tube and add 100ul of sterile water to dissolve the DNA.
3. Close the tube and incubate for 10 minutes at room temperature.
4. Briefly vortex the tube and then do a quick spin (less than 5000xg) to concentrate the liquid at the bottom.
5. Store the suspended plasmid at -20°C. The DNA is stable for at least one year from date of shipping when stored at -20°C.

RefSeq: [NM_032204.5](#)

RefSeq Size: 2799 bp

RefSeq ORF: 2274 bp

Locus ID: 84164

UniProt ID: [Q9H118](#)

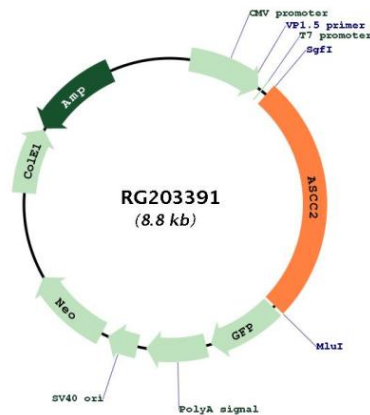
Cytogenetics: 22q12.2

Domains: CUE

Protein Families: Druggable Genome, Transcription Factors

Gene Summary: Plays a role in DNA damage repair as component of the ASCC complex. Recruits ASCC3 and ALKBH3 to sites of DNA damage by binding to polyubiquitinated proteins that have 'Lys-63'-linked polyubiquitin chains (PubMed:29144457). Part of the ASC-1 complex that enhances NF-kappa-B, SRF and AP1 transactivation (PubMed:12077347).[UniProtKB/Swiss-Prot Function]

Product images:



Circular map for RG203391