

## Product datasheet for **RG203386**

### INT11 (CPSF3L) (NM\_017871) Human Tagged ORF Clone

#### Product data:

Product Type:	Expression Plasmids
Product Name:	INT11 (CPSF3L) (NM_017871) Human Tagged ORF Clone
Tag:	TurboGFP
Symbol:	INT11
Synonyms:	CPSF3L; CPSF73L; INT11; RC-68; RC68
Mammalian Cell Selection:	Neomycin
Vector:	pCMV6-AC-GFP (PS100010)
E. coli Selection:	Ampicillin (100 ug/mL)



[View online »](#)

**ORF Nucleotide Sequence:**

>RG203386 representing NM\_017871  
 Red=Cloning site Blue=ORF Green=Tags(s)

TTTTGTAATACGACTCACTATAGGGCGGCCGGGAATTCGTCGACTGGATCCGGTACCGAGGAGATCTGCC  
 GCC**CGGATCGCC**

ATGCCTGAGATCAGAGTCACGCCCTTGGGGCCGCCAGGACGTGGGCCGAAGCTGCATCCTGGTCTCCA  
 TTGCGGGCAAGAATGTCATGCTGGACTGTGGAATGCACATGGGCTTCAATGACGACCGACGCTTCCCTGA  
 CTTCTCCTACATACCCAGAACGCCCGCTAACAGACTTCTGGACTGTGTGATCATTAGCCACTCCAC  
 CTGGACCACTGCGGGCACTCCCCTACTTCAGCGAGATGGTGGGCTACGACGGCCCCATCTACATGACTC  
 ACCCCACCCAGGCCATCTGCCCATCTTCTGGAGGACTACCGCAAGATCGCCGTAGACAAGAAGGGCGA  
 GGCCAACCTTCTCACCTCCAGATGATCAAGACTGCATGAAGAAGGTGGTGGCTGTCCACCTCCACCAG  
 ACGGTCCAGGTAGATGATGAGCTGGAGATCAAGGCCTACTATGCAGGCCACGTGCTGGGGCAGCCATGT  
 TCCAGATTAAGTGGGCTCAGAGTCTGTGGTCTACACGGGTGATTATAACATGACCCAGACCGACTT  
 AGGAGCTGCCTGGATTGACAAGTCCCGCCCACTGCTCATCACAGAGTCCACGTACGCCACGACCATC  
 CGTGAATCCAAGCGCTGCCGGGAGCGAGACTTCTGAAGAAAGTCCACGAGACCGTGGAGCGTGGTGGGA  
 AGGTGCTGATACCTGTGTTTCGCGCTGGGCCGCGCCAGGAGCTCTGCATCCTCCTGGAGACCTTCTGGGA  
 GCGCATGAACCTGAAGGTGCCATCTACTTCTCCACGGGGCTGACCGAGAAGGCCAACCACTACTACAAG  
 CTGTTTCATCCCCTGGACCAACCAAGAATCCGCAAGACTTTTGTGCAGAGGAACATGTTTGTGTTCAAGC  
 ACATCAAGGCCTTCGACCGGGCTTTTGTGACAACCCAGGACCGATGGTTGTGTTGCCACGCCAGGAAT  
 GCTGCACGCTGGGCACTCCCTGCAGATCTCCGAAATGGGCCGAAACGAAAAGAACATGGTTCATCATG  
 CCCGGCTACTGCTGCAGGGCACCGTCCGCCACAAGATCCTCAGCGGGCAGCGGAAGCTCGAGATGGAGG  
 GGCGGCAGGTGCTGGAGGTCAAGATGCAGGTGGAGTACATGTCTTTCAGCGCACACGCGCAAGCCAAAGGG  
 CATCATGCAGCTGGTGGGCCAGGCAGAGCCGAGAGCGTCTGCTGGTGCATGGCGAGGCCAAGAAGATG  
 GAGTTCCTGAAGCAGAAGATCGAGCAGGAGCTCCGGGTCAACTGCTACATGCCGGCCAATGGCGAGACGG  
 TGACGCTGCCACAAGCCCCAGCATCCCGTAGGCATCTCGTGGGGCTGCTGAAGCGGGAGATGGCGCA  
 GGGGCTGCTCCCTGAGGCCAAGAAGCCTCGGCTCCTGCACGGCACCTGATCATGAAGGACAGCAACTTC  
 CGGCTGGTGTCTCAGAGCAAGCCCTCAAAGAGCTGGGTCTGGCTGAGCACCAGCTGCGTTCACCTGCC  
 GCGTGCACCTGCATGACACACGCAAGGAGCAGGAGACGGCATTGCGCGTCTACAGCCACCTAAGAGCGT  
 CCTGAAGGACCACTGTGTGCAGCACCTCCCGACGGCTCTGTGACTGTGGAGTCCGTCTCTCCAGGCC  
 GCCGCCCTTCTGAGGACCCAGGCACCAAGGTGCTGCTGGTCTCCTGGACCTACCAGGACGAGGAGCTGG  
 GGAGTTCCTCACATCTCTGCTGAAGAAGGGCCTCCCCAGGCCCCAGC

**ACGCGTACGCGGCCGCTCGAG** – GFP Tag – GTTTAA

**Protein Sequence:**

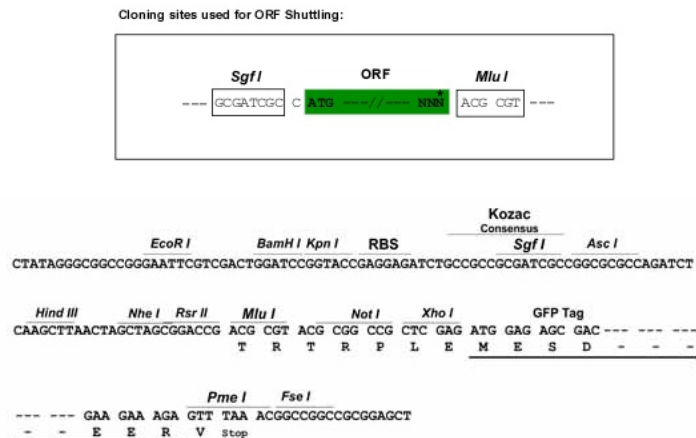
>RG203386 representing NM\_017871  
 Red=Cloning site Green=Tags(s)

MPEIRVTPLAGQDVGRSCILVSIAGKNVMLDCGMHMGFNDRRFPDFSYITQNGRLTDFLDCVIIISHFH  
 LDHCGALPYFSEMVGYDGPIMTHPTQAIPIILLEDYRKAIVDKKGEANFFTSQMIKDCMKKVVAVHLHQ  
 TVQVDELEIKAYYAGHVLGAAMFQIKVGSSEVVYTGDNMTPDRHLGAAWIDKCRPNLLITESTYATTI  
 RDSKRRCRERDFLKKVHETVERGGKVLIPVFALGRAQELCILLETFWERMNLKVPYIFSTGLTEKANHYK  
 LFIPWTNQKIRKTFVQRNMFQKHIKAFDRAFDNPGPMVVFATPGMLHAGQSLQIFRWAGNEKNMVMIM  
 PGYCVQGTVGHKILSGQRKLEMEGRQVLEVKMQVEYMSFSAHADAKGIMQLVGQAEPESVLLVHGEAKKM  
 EFLKQKIEQELRVNCPANGETVTLPTSPSIPVGISLGLLKREMAQGLLPEAKKPRLLHGTLIMKDSNF  
 RLVYSEQALKELGLAEHQLRFTCRVHLHDTRKEQETALRVYSHLKSVLKDHCVQHLPDGSVTVESVLLQA  
 AAPSEDPGTVKLLVSWTYQDEELGSFLTSLKGLPQAPS

**TRTRPLE** – GFP Tag – V

**Restriction Sites:**

SgfI-MluI

**Cloning Scheme:**


**ACCN:** NM\_017871

**ORF Size:** 1800 bp

**OTI Disclaimer:** The molecular sequence of this clone aligns with the gene accession number as a point of reference only. However, individual transcript sequences of the same gene can differ through naturally occurring variations (e.g. polymorphisms), each with its own valid existence. This clone is substantially in agreement with the reference, but a complete review of all prevailing variants is recommended prior to use. [More info](#)

**OTI Annotation:** This clone was engineered to express the complete ORF with an expression tag. Expression varies depending on the nature of the gene.

**Components:** The ORF clone is ion-exchange column purified and shipped in a 2D barcoded Matrix tube containing 10ug of transfection-ready, dried plasmid DNA (reconstitute with 100 ul of water).

**Reconstitution Method:**

1. Centrifuge at 5,000xg for 5min.
2. Carefully open the tube and add 100ul of sterile water to dissolve the DNA.
3. Close the tube and incubate for 10 minutes at room temperature.
4. Briefly vortex the tube and then do a quick spin (less than 5000xg) to concentrate the liquid at the bottom.
5. Store the suspended plasmid at -20°C. The DNA is stable for at least one year from date of shipping when stored at -20°C.

**RefSeq:** [NM\\_017871.3](#), [NP\\_060341.2](#)

**RefSeq Size:** 2147 bp

**RefSeq ORF:** 1803 bp

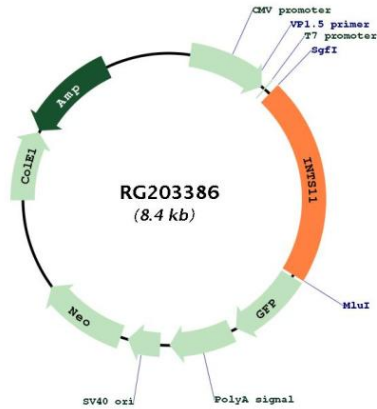
**Locus ID:** 54973

**UniProt ID:** [Q5TA45](#)

**Cytogenetics:** 1p36.33

**Gene Summary:**

The Integrator complex contains at least 12 subunits and associates with the C-terminal domain of RNA polymerase II large subunit (POLR2A; MIM 180660) and mediates the 3-prime end processing of small nuclear RNAs U1 (RNU1; MIM 180680) and U2 (RNU2; MIM 180690). INTS11, or CPSF3L, is the catalytic subunit of the Integrator complex (Baillat et al., 2005 [PubMed 16239144]).[supplied by OMIM, Mar 2008]

**Product images:**


Circular map for RG203386