

Product datasheet for **RG203380**

DUS3L (NM_020175) Human Tagged ORF Clone

Product data:

Product Type:	Expression Plasmids
Product Name:	DUS3L (NM_020175) Human Tagged ORF Clone
Tag:	TurboGFP
Symbol:	DUS3L
Synonyms:	DUS3
Mammalian Cell Selection:	Neomycin
Vector:	pCMV6-AC-GFP (PS100010)
E. coli Selection:	Ampicillin (100 ug/mL)



[View online »](#)

ORF Nucleotide Sequence:

>RG203380 representing NM_020175
 Red=Cloning site Blue=ORF Green=Tags(s)

TTTTGTAATACGACTCACTATAGGGCGGCCGGAATTCGTCGACTGGATCCGGTACCGAGGAGATCTGCC
 GCC**CGATCGCC**

ATGGCGGAGGGAACGGCGGAGGCTCCTCTAGAGAATGGTGGTGGTGGCGACTCGGGAGCCGAGCTTTGG
 AACGAGGAGTGGCGCCATTAAGCGTCAATACCTCACCACCAAGGAGCAGTTTCACCAATTCCTGGAAGC
 CAAAGGGCAGGAGAAGACTTGCCGGGAAACCGAGGTAGGAGACCCTGCTGGCAATGAGCTGGCTGAGCCT
 GAGGCTAAGCGGATCCGACTGGAGGATGGACAGACGGCGGACGGGACAGCGGAGGAGGCAGCAGAGCCCG
 GGGAGCAGCTACAGACTCAGAAGAGGGCCCGGGGACAAAACAAGGGCCGGCCCATGTGAAGCCACGAA
 CTACGACAAGAACAGGCTGTGTCCCTCCCTAATCCAGGAGTGGCTGCTAAGTGTTCCTCGGTGATCGC
 TGCCGCTTTCTGCACGACGTGGGGCGCTACCTGGAGACCAAGCCGGCCGACCTGGGCCCCCGCTGCGTGC
 TCTTCGAGACCTTCGGCCGGTCCCCTACGGCGTGACCTGCCGCTTCGCTGGGGCCACCTGGGGCCGA
 GGGACAGAACCTGGTGCAGGAGGAGTTGGCGGCCCGGGACCCAGCCCCGTCATCCGCAACGGCCTG
 GACAAAGCCCTGCAGCAGCAGCTGCGGAAGCGCGAGGTCCGCTTCGAGCGAGCTGAGCAGGCCCTGCGCC
 GGTTTCAGCCAGGGCCCCACACCCGCTGCCGCTGTCCCGAGGGCACGGCAGCCGAGGGCGCTCCCAGGCA
 GGAAAACCTGTGGTGGCCAGCAGTCCCCGAGGGCCGGGCACTAGCACCCCTCCCAGCAGCCCGTGC
 ACCTGCGGGCCCTGACGGATGAGGACGTGGTCAAGGCTGCCGCTGTGAGAAGAAGCGGCTGGACATCC
 GTGGCAAACCTTACCTGGCCCCCTCACACGTGTGGAACTGCCCTCCGACGGATCTGCAAGCGCTT
 CGGGGCGGATGTGACATGTGGAGAGATGGCCGTCTGCACCAACCTGCTGCAGGGCCAGATGTCCGAGTGG
 GCCCTACTCAAACGCCACCAGTGTGAGGACATCTTTGGCGTCCAGCTGGAGGGCGCCTCCCCGACACCA
 TGACCAAGTGTCCGAGCTGCTGAGCCGACCGTGGAGGTGGACTTTGTGGACATCAACGTCGGCTGCC
 CATCGACCTCGTGTACAAGAAGGTGGGGCTGTGCCCTCATGAATCGCTCCACCAAGTTCAGCAGATC
 GTCCTGGCATGAACCAGGTGCTGGATGTGCCGCTGACTGTGAAGATCCGCACAGGCGTCCAGGAGCGTG
 TGAACCTGGCGCACCGCCTGCTGCCGAGCTGCCGGACTGGGGCGTGGCACTCGTACGCTCCACGGCCG
 CTCTCGGGAGCAGCGCTACACCAAGCTAGCTGACTGGCAGTACATCGAGGAGTGGTGCAGGCCGCCAGC
 CCCATGCCCTGTTCCGAAATGGGGACATCTTGTCAATTTGAGGATGCCAACCGGCCATGCAGACTGGT
 TCACCGGATCATGATTGCCCGTGGCGCCTGCTCAAGCCGTGGCTTTCACGGAGATCAAGGAGCAGCG
 GCACTGGGACATCTCGTGTCCGAGCGCCTGGACATCCTGCGGGACTTACCAACTACGGCTGGAGCAC
 TGGGGCTCGGACACGCAGGGCGTGGAGAAGACCGGGCGCTTCTGCTCGAGTGGTGTCTTCTGTGCC
 GGTACGTGCCCGTGGGGCTGCTGGAGCGGCTCCCACAGAGGATCAACGAGCGGCCCCCTACTACCTGGG
 CCGCGACTACCTGGAGACGCTGATGGCCAGCCAGAAGGCAGCCGACTGGATCCGCATCAGCGAGATGCTC
 CTTGGGCCAGTCCCCCAGCTTCGCTTCTTGGCGAAGCACAAAGGCCAACGCGTACAAG

AG**CGGACCG**ACGCGTACGCGGCCGCTCGAG – GFP Tag – GTTTAA

Protein Sequence:

>RG203380 representing NM_020175
 Red=Cloning site Green=Tags(s)

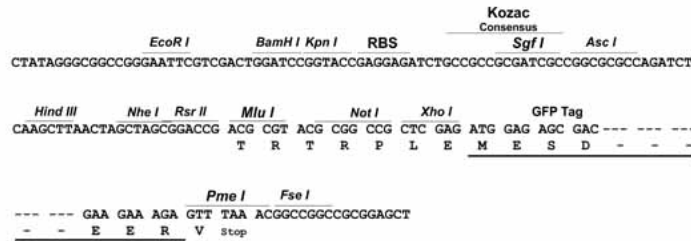
MAEGTAEAPLENGGGDSGAGALERGVAPIKRQYLTTKEQFHQFLEAKGQEKTCRETEVGDPAAGNELAEP
 EAKRIRLEDGQTADGQTEEAEPGEQLQTQKRARGQNKGRPHVKPTNYDKNRLCPSLIQESAAKCFGDR
 CRFLHDVGRYLETKPADLGPRLVLFETFGRCPYGVTCRFAGAHLPGEQNLVQEELAARGTQPPSIRNGL
 DKALQQQLRKREVRFERAEQALRRFSQGPPTAAAVPEGTAAGAPRQENCGAQQVPAGPGTSTPPSSPVR
 TCGPLTDEDVVRPCEKKRLDIRGKLYLAPLTTGNNLPFRRICKRFADVTGEMAVCTNLLQGMSEW
 ALLKRHQCEDIFGVQLEGAFPDMTKCAELL SRTVEVDFVDINVGCPIDLVYKGGGKCALMNRSTKFQOI
 VRGMNQVLDVPLTVKIRTGVQERVNL AHRLLPELRDVGVALVTLHGRSREQRYTKLADWQYIEECVQAAS
 PMPLFGNGDILSFEDANRAMQTGVTGIMIARGALLKPLWFTEIKEQRHWDISSERLDILRDFNTYGLEH
 WGSDTQGVKTRRFLLEWL SFLCRYVPVGLLERLPQRINERPPYYLGRDYLETLMASQKAADWIRISEML
 LGPVPPSFAFLPKHKANAYK

SGP**TRRRLE** – GFP Tag – V

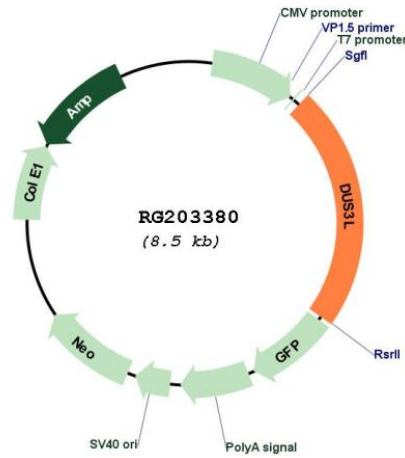
Restriction Sites: SgfI-RsrII

Cloning Scheme:

Cloning sites used for ORF Shuttling:



Plasmid Map:



ACCN: NM_020175

ORF Size: 1950 bp

OTI Disclaimer:	The molecular sequence of this clone aligns with the gene accession number as a point of reference only. However, individual transcript sequences of the same gene can differ through naturally occurring variations (e.g. polymorphisms), each with its own valid existence. This clone is substantially in agreement with the reference, but a complete review of all prevailing variants is recommended prior to use. More info
OTI Annotation:	This clone was engineered to express the complete ORF with an expression tag. Expression varies depending on the nature of the gene.
Components:	The ORF clone is ion-exchange column purified and shipped in a 2D barcoded Matrix tube containing 10ug of transfection-ready, dried plasmid DNA (reconstitute with 100 ul of water).
Reconstitution Method:	<ol style="list-style-type: none">1. Centrifuge at 5,000xg for 5min.2. Carefully open the tube and add 100ul of sterile water to dissolve the DNA.3. Close the tube and incubate for 10 minutes at room temperature.4. Briefly vortex the tube and then do a quick spin (less than 5000xg) to concentrate the liquid at the bottom.5. Store the suspended plasmid at -20°C. The DNA is stable for at least one year from date of shipping when stored at -20°C.
RefSeq:	NM_020175.1 , NP_064560.1
RefSeq Size:	2078 bp
RefSeq ORF:	1953 bp
Locus ID:	56931
UniProt ID:	Q96G46
Cytogenetics:	19p13.3
Domains:	zf-CCCH, Dus
Gene Summary:	Catalyzes the synthesis of dihydrouridine, a modified base found in the D-loop of most tRNAs.[UniProtKB/Swiss-Prot Function]