

Product datasheet for **RG203378**

BIN3 (NM_018688) Human Tagged ORF Clone

Product data:

Product Type: Expression Plasmids
Product Name: BIN3 (NM_018688) Human Tagged ORF Clone
Tag: TurboGFP
Symbol: BIN3
Mammalian Cell Selection: Neomycin
Vector: pCMV6-AC-GFP (PS100010)
E. coli Selection: Ampicillin (100 ug/mL)
ORF Nucleotide Sequence: >RG203378 representing NM_018688
 Red=Cloning site Blue=ORF Green=Tags(s)

TTTTGTAATACGACTCACTATAGGGCGGCCGGAATTCGTCGACTGGATCCGGTACCGAGGAGATCTGCC
 GCC**CGATCGCC**

ATGAGTTGGATTCCTTTTAAGATTGGGCAGCCCAAGAAACAGATTGTGCCAAAACAGTGGAGAGAGACT
 TTGAAAGGGAGTATGGAAAACCTCAGCAGCTGGAAGAGCAGACCCGGAGGCTGCAGAAAGACATGAAGAA
 GAGCACCAGCGCAGACCTGGCCATGTCAAATCTGCCGTGAAGATATCCTTGGACTTACTCTCCAATCCC
 CTCTGTGAGCAAGACCAGGACCTTCTGAACATGGTGACGGCCCTGGACACGGCCATGAAGCGGATGGATG
 CCTTCAATCAGGAAAAGGTGAACCAGATCCAGAAGACTGTGATCGAGCCCTTAAAAAAGTTCGGCAGTGT
 CTTCCCGAGCCTCAACATGGCTGTGAAGAGCGGGAACAGGCCTTGCAGGACTACAGGAGGCTGCAGGCC
 AAGGTGGAGAAGTATGAGGAAAAGGAGAAGACGGGCCAGTGCTGGCCAAGCTCCACCAGGCACGAGAGG
 AGCTGCGGCTGTGCGGGAGGACTTTGAAGCCAAGAACAGGCAGCTGCTGGAGGAGATGCCGCGCTTCTA
 CGGCAGCCGCTCGACTACTTCCAGCCAGCTTTGAGTCCCTCATCCGAGCTCAGGTTGTGTACTACTCG
 GAAATGCACAAGATCTTTGGAGACCTGTCCATCAGCTTGACCAGCCAGGCCACTCCGATGAGCAGCGGG
 AGCGGGAGAACGAGGCCAAACTCAGTGAGCTCCGGCCCTCTCCATTGTGGCCGATGAC

ACGCGTACGCGGCCGCTCGAG - GFP Tag - GTTTAA

Protein Sequence: >RG203378 representing NM_018688
 Red=Cloning site Green=Tags(s)

MSWIPFKIGQPKKQIVPKTVERDFEREYKLLQLEEQTRRLQKDMKKSTADLAMSksAVKISLDLLSNP
 LCEQDQDLLNMVTALDTAMKRMDAFNQEKVNIQKTVIEPLKKGFSVFPslNMAVKRREQALQDYRRLQA
 KVEKYEEKETGPVLAkLHQAREELRPVREDFEAKNRQLLEEMPRFYGSRLDYFQPSFESLIRAQVYYYS
 EMHKIFGDLShQLDQPGHSDEQRERENEAKLSELRALSIvADD

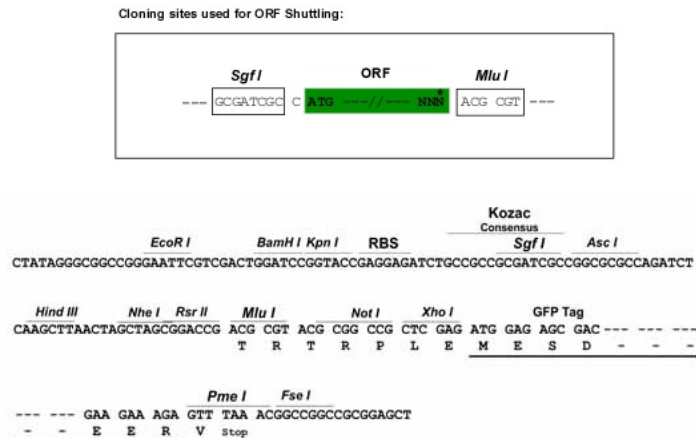
TRTRPLE - GFP Tag - V



[View online »](#)

Restriction Sites: SgfI-MluI

Cloning Scheme:



ACCN: NM_018688

ORF Size: 759 bp

OTI Disclaimer: The molecular sequence of this clone aligns with the gene accession number as a point of reference only. However, individual transcript sequences of the same gene can differ through naturally occurring variations (e.g. polymorphisms), each with its own valid existence. This clone is substantially in agreement with the reference, but a complete review of all prevailing variants is recommended prior to use. [More info](#)

OTI Annotation: This clone was engineered to express the complete ORF with an expression tag. Expression varies depending on the nature of the gene.

Components: The ORF clone is ion-exchange column purified and shipped in a 2D barcoded Matrix tube containing 10ug of transfection-ready, dried plasmid DNA (reconstitute with 100 ul of water).

Reconstitution Method:

1. Centrifuge at 5,000xg for 5min.
2. Carefully open the tube and add 100ul of sterile water to dissolve the DNA.
3. Close the tube and incubate for 10 minutes at room temperature.
4. Briefly vortex the tube and then do a quick spin (less than 5000xg) to concentrate the liquid at the bottom.
5. Store the suspended plasmid at -20°C. The DNA is stable for at least one year from date of shipping when stored at -20°C.

RefSeq: [NM_018688.3](#), [NP_061158.1](#)

RefSeq Size: 1863 bp

RefSeq ORF: 762 bp

Locus ID: 55909

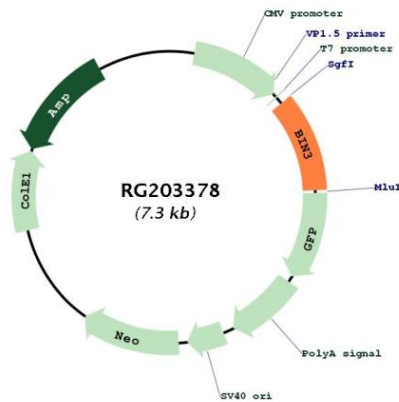
UniProt ID: [Q9NQY0](#)

Cytogenetics: 8p21.3

Domains: BAR, BAR

Gene Summary: The product of this gene is a member of the BAR domain protein family. The encoded protein is comprised solely of a BAR domain which is predicted to form coiled-coil structures and proposed to mediate dimerization, sense and induce membrane curvature, and bind small GTPases. BAR domain proteins have been implicated in endocytosis, intracellular transport, and a diverse set of other processes. [provided by RefSeq, Jul 2008]

Product images:



Circular map for RG203378