

## Product datasheet for **RG203364**

### ACSS3 (NM\_024560) Human Tagged ORF Clone

#### Product data:

Product Type:	Expression Plasmids
Product Name:	ACSS3 (NM_024560) Human Tagged ORF Clone
Tag:	TurboGFP
Symbol:	ACSS3
Mammalian Cell Selection:	Neomycin
Vector:	pCMV6-AC-GFP (PS100010)
E. coli Selection:	Ampicillin (100 ug/mL)



[View online »](#)

**ORF Nucleotide Sequence:**

>RG203364 representing NM\_024560  
 Red=Cloning site Blue=ORF Green=Tags(s)

TTTTGTAATACGACTCACTATAGGGCGGCCGGAATTCGTCGACTGGATCCGGTACCGAGGAGATCTGCC  
 GCC**CGCATCGCC**

ATGAAACCGTCTTGGCTGCAGTGTCTGTAAGTACCAGCGCCGGGGGCTCGGAGGGCCCTGCCTGGT  
 CCTCTCCGGCCCGGGAGCCGGTGCAGCCCTCAGGGCTTTAGTGGTCCCGGGCCCGGGGCGGTCTCGG  
 GGGCCGGGATGCAGGGCACTGTCTCCGGCAGTGGCAGCGAGTACAAGACCCACTTCGACGCTCGGTG  
 ACCGACCCGAGAGGTTCTGGGGCAAAGCTGCCGAGCAGATCAGCTGGTACAAGCCCTGGACAAAACGC  
 TGGAGAACAACACTCGCCCTCTACCAGGTGGTTGTGGAAGGAATGCTTAACATTTGTTACAATGCCGT  
 TGATCGTCATATTGAAAATGGTAAAGGGGATAAGATTGCTATCATCTATGACAGTCTGTTACAACACT  
 AAAGCAACCTTTACCTATAAAGAAGTTCTGGAGCAGGTCTCCAAGCTGGTGGTGTCTTGGTCAAGCATG  
 GCATCAAGAAAGGTGACTGTGGTTATCTACATGCCTATGATCCACAGGCGATGATACCATGTTGGC  
 ATGTGCAAGGATAGGTGCCATCCACAGTCTCATATTTGGAGGATTTGCTCCAAAGAACTAAGTAGTCGC  
 ATTGATCATGTAAAGCCCAAGGTGGTTGTACAGCATCATTTGGCATTGAACCTGGAAGGAGGGTAGAGT  
 ACGTACCCTTGTAGAAGAAGCGCTAAAAATAGGACAACAAAACAGACAAAATTTCTATTATATATCG  
 TCCAAATATGGAGGCGGTTCTTTGGCTCCCGGTCTGTGACCTTGATTGGGATGAAGAGATGGCAAAAGCC  
 CAGTCACATGACTGTGTTCTGTTCTTTGAGAACCCACTGTATTTCTTTACACATCTGGCACAACGG  
 GGTACCTAAGGGTGTGATTAGGCCACTGGGGGATACGCTGTGCTGCTACACTGGTCAATGTCTTCCAT  
 ATACGGACTTCAACCCGAGAGGTGTGGTGGCAGCTTCTGACTTAGGCTGGGTTGTTGGACATTCCTAT  
 ATCTGCTATGGACCTCTTCTTTCATGGGAACACAACAGTTTTATATGAGGGGAAGCCTGTGGGAACACCAG  
 ATGCTGGCGCTTATTTCCGTGTGCTTGCAGAGCATGGAGTAGTGCCTTGTGTTACAGCACCAACTGCAAT  
 TAGAGCAATCCGTCAACAGGACCCTGGGCAGCTTTGGGGAAGCAGTACTCTGACAAGGTTCAAACA  
 TTTTTGTGGCTGGAGAACGATGTGATGTAGAGCCCTGGAATGGTCCAAAAATGTCTTCAGAGTACCTG  
 TCTTAGACCATTGGTGGCAAACTGAGACTGGATCTCCAATTACTGCGTCATGTGTTGGATTAGGCAATTC  
 TAAAACACCTCCACCAGGCAAGCAGGAAAAAGCGTCCCAGGATACAATGTTATGATTTTGGATGACAAC  
 ATGCAAAAACCTGAAGGCTCGGTGTTTAGGAAATATTGGTAAAGTTACCATTGCCACCTGGGGCTTTTT  
 CAGGACTCTGGAAGAATCAGGAAGCATTCAAGCATTATACTTTGAAAAATTTCTGGATATTATGATAC  
 CATGGATGCTGGTTACATGGATGAAGAAGGCTATTTGTATGTTATGTCTCGAGTGGATGATGTAATAAT  
 GTTGCAGGTCACAGAATTTCTGCAGGCGCCATTGAAGAGTCAATCCTTTCCCATGGTACCGTGGCAGACT  
 GTGCTGTTGTTGCAAGGAAGATCCCTTAAAAGGTCATGTCCCCTTAGCACTCTGTGATTGAGAAAAGA  
 TATAAATGCAACAGAGGAGCAAGTTTTGGAAGAAATTGTGAAACACGTTAGACAGAACATTGGCCCTGTG  
 GCTGCTTTTCGAAATGCAGTGTGTTGTCAAACAGCTACCCAAAACAGATCTGGCAAGATCCCCGATCAG  
 CTTTATCTGCCATTGTCAATGGCAAGCCATACAAGATAACTTCTACAATTGAAGACCCAGCATTTTGG  
 CCACGTAGAAGAAATGCTGAAGCAAGCA

**ACGCGT**ACGCGGCCGCTCGAG - GFP Tag - GTTTAA

**Protein Sequence:** >RG203364 representing NM\_024560  
Red=Cloning site Green=Tags(s)

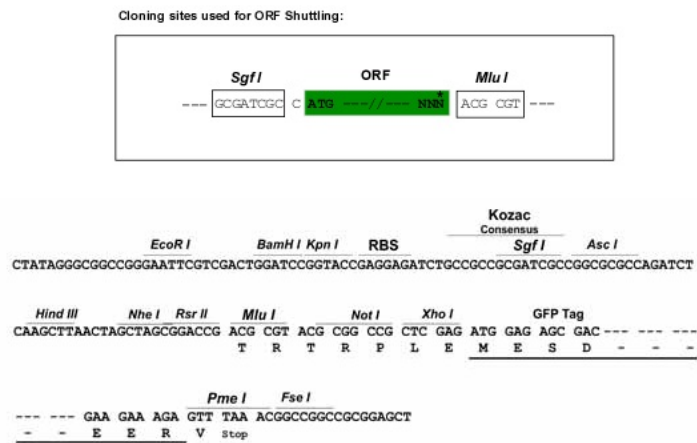
```

MKPSWLQCRKVTSAAGLGGPLPGSSPARGAGAALRALVVPGRGGLGGRGCRALSSGSGSEYKTHFAASV
TDPERFWGKAAEQISWYKPWTKLTENKHPSTRWFVEGMLNICYNAVDRHIENKGDKIAIIYDSPVTNT
KATFTYKEVLEQVSKLAGVLVKHGIIKGDVVIYMPMIPQAMYTMLACARIGAIHSLIFGGFASKELSSR
IDHVKPKVVVVTASFGEIPGRRVEYVPLVEEALKIGQHDPDKILIYNRPNMEAVPLAPGRDLWDDEEMAKA
QSHDCVPVLSHEPLYILYTSGTTGLPKGVIRPTGGYAVMLHWSMSSIYGLQPGEVWVAASDLGWVVGHSY
ICYGPLLHGNTTVLYEGKPVGTPDAGAYFRVLAEHGVAALFTAPTAIRAIRQQDPGAALGKQYSLTRFKT
LFVAGERCDVETLEWSKNVFRVPLDHWVQTTETGSPITASCVGLGNSKTPPPGQAGKSVPGYNVMILDDN
MQKLRKARLGNIVVKLPLPPGAFSGLWKNQEAFKHLYFEKFPGYDTMDAGYMDEEGYLVMRSRVDVIVN
VAGHRISAGAIIEESILSHGTVADCAVVGKEDPLKGHVPLALCVALRKDINATEEQVLEEIVKHVRQNIQPV
AAFRNAVFKQLPKTRSGKIPRSALSAIVNGPKYKITSTIEDPSIFGHVEEMLKQA
    
```

TRTRPLE - GFP Tag - V

**Restriction Sites:** SgfI-MluI

**Cloning Scheme:**



**ACCN:** NM\_024560

**ORF Size:** 2058 bp

**OTI Disclaimer:** The molecular sequence of this clone aligns with the gene accession number as a point of reference only. However, individual transcript sequences of the same gene can differ through naturally occurring variations (e.g. polymorphisms), each with its own valid existence. This clone is substantially in agreement with the reference, but a complete review of all prevailing variants is recommended prior to use. [More info](#)

**OTI Annotation:** This clone was engineered to express the complete ORF with an expression tag. Expression varies depending on the nature of the gene.

**Components:** The ORF clone is ion-exchange column purified and shipped in a 2D barcoded Matrix tube containing 10ug of transfection-ready, dried plasmid DNA (reconstitute with 100 ul of water).

**Reconstitution Method:**

1. Centrifuge at 5,000xg for 5min.
2. Carefully open the tube and add 100ul of sterile water to dissolve the DNA.
3. Close the tube and incubate for 10 minutes at room temperature.
4. Briefly vortex the tube and then do a quick spin (less than 5000xg) to concentrate the liquid at the bottom.
5. Store the suspended plasmid at -20°C. The DNA is stable for at least one year from date of shipping when stored at -20°C.

**RefSeq:** [NM\\_024560.4](#)

**RefSeq Size:** 3033 bp

**RefSeq ORF:** 2061 bp

**Locus ID:** 79611

**UniProt ID:** [Q9H6R3](#)

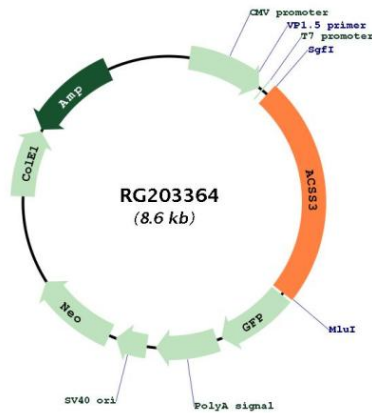
**Cytogenetics:** 12q21.31

**Domains:** AMP-binding

**Protein Pathways:** Metabolic pathways, Propanoate metabolism

**Gene Summary:** Activates acetate so that it can be used for lipid synthesis or for energy generation. [UniProtKB/Swiss-Prot Function]

**Product images:**



Circular map for RG203364