

Product datasheet for **RG203362**

ASAM (CLMP) (NM_024769) Human Tagged ORF Clone

Product data:

Product Type:	Expression Plasmids
Product Name:	ASAM (CLMP) (NM_024769) Human Tagged ORF Clone
Tag:	TurboGFP
Symbol:	ASAM
Synonyms:	ACAM; ASAM; CSBM; CSBS
Mammalian Cell Selection:	Neomycin
Vector:	pCMV6-AC-GFP (PS100010)
E. coli Selection:	Ampicillin (100 ug/mL)
ORF Nucleotide Sequence:	>RG203362 representing NM_024769 Red=Cloning site Blue=ORF Green=Tags(s)

TTTTGTAATACGACTCACTATAGGGCGGCCGGAATTCGTCGACTGGATCCGGTACCGAGGAGATCTGCC
GCC**CGATCGCC**

ATGTCCCTCCTCCTTCTCCTCTTGCTAGTTTCCTACTATGTTGGAACCTTGGGACTCACACTGAGATCA
AGAGAGTGGCAGAGGAAAAGGTCACTTTGCCCTGCCACCATCAACTGGGGCTTCCAGAAAAAGACTCT
GGATATTGAATGGCTGCTCACCATAATGAAGGGAACCAAAAAGTGGTGATCACTTACTCCAGTCGTCAT
GTCTACAATAACTTGACTGAGGAACAGAAGGGCCGAGTGGCCTTTGCTTCCAATTTCTGGCAGGAGATG
CCTCCTTGACAGATTGAACCTCTGAAGCCAGTGATGAGGGCCGGTACACCTGTAAGGTTAAGAATTCAGG
GCGCTACGTGTGGAGCCATGTCATCTTAAAAGTCTTAGTGAGACCATCCAAGCCCAAGTGTGAGTTGGAA
GGAGAGCTGACAGAAGGAAGTGACCTGACTTTGCAGTGTGAGTCATCCTCTGGCAGAGGCCATTGTGT
ATTACTGGCAGCGAATCCGAGAGAAAGAGGGAGAGGATGAACGTCTGCCTCCCAAATCTAGGATTGACTA
CAACCACCTGGACGAGTTCTGCTGCAGAACTTACCATGTCTACTCTGGACTGTACCAGTGCACAGCA
GGCAACGAAGCTGGGAAGGAAAGCTGTGTGGTGGAGTAACTGTACAGTATGTACAAAGCATCGGCATGG
TTGCAGGAGCAGTGACAGGCATAGTGGCTGGAGCCCTGCTGATTTTCTCTTGGTGTGGCTGCTAATCCG
AAGGAAAGACAAAGAAAGATATGAGGAAGAAGAGACCTAATGAAATTCGAGAAGATGCTGAAGCTCCA
AAAGCCCGTCTTGTGAAACCCAGCTCCTTCTCAGGCTCTCGGAGCTCAGCTCTGGTTCTTCCCTCCA
CTCGTCCACAGCAAATAGTGCCTCACGACGCCAGCGGACACTGTCAACTGACGCAGCACCCAGCCAGG
GCTGGCCACCCAGGCATACAGCCTAGTGGGGCCAGAGGTGAGAGTTTCTGAACCAAGAAAGTCCACCAT
GCTAATCTGACCAAAGCAGAAACACACCCAGCATGATCCCAGCCAGAGCAGAGCCTTCCAACGGTC

ACGGTACGCGGCCGCTCGAG - GFP Tag - GTTTAA



[View online »](#)

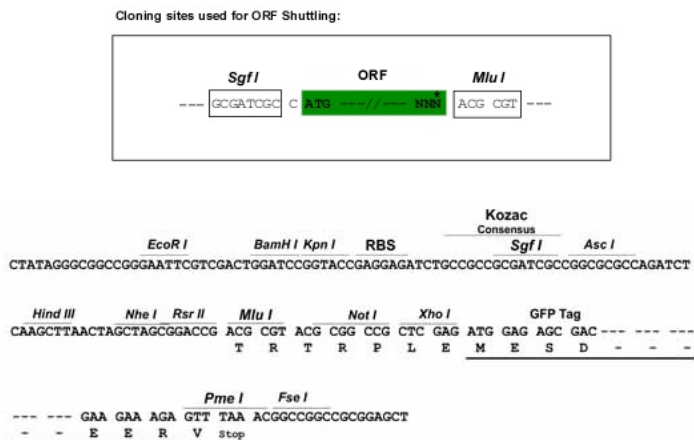
Protein Sequence: >RG203362 representing NM_024769
Red=Cloning site Green=Tags(s)

MSLLLLLLLLVSYVGTGLGTHTEIKRVAEEKVTLPCHHQLGLPEKDTLDIEWLLTDNEGNQKVITYSSRH
 VYNNL TEEQKGRVAFASNFLAGDASLQIEPLKPSDEGRYTCVKNSGRYVWSHVILKVLVRPSKPKCELE
 GELTEGSDLTLQCESSSGTEPIVYYWQRIREKEGEDERLPPKSRIDYNHPGRVLLQNL TMSY SGL YQCTA
 GNEAGKESCVRVTVQYVQSIGMVAGAVTGIVAGALLIFLLVWLLIRRKDKERYEEEEERPN EIREDAEAP
 KARLVKPSSSSSSRSSRS SSTRSTANSASRSQRTLSTDAAPQPLATQAYSLVGPEVRGSEP KKVHH
 ANLTKAETTPSMIP SQSRA FQTV

TRTRPLE - GFP Tag - V

Restriction Sites: SgfI-MluI

Cloning Scheme:



ACCN: NM_024769

ORF Size: 1119 bp

OTI Disclaimer: The molecular sequence of this clone aligns with the gene accession number as a point of reference only. However, individual transcript sequences of the same gene can differ through naturally occurring variations (e.g. polymorphisms), each with its own valid existence. This clone is substantially in agreement with the reference, but a complete review of all prevailing variants is recommended prior to use. [More info](#)

OTI Annotation: This clone was engineered to express the complete ORF with an expression tag. Expression varies depending on the nature of the gene.

Components: The ORF clone is ion-exchange column purified and shipped in a 2D barcoded Matrix tube containing 10ug of transfection-ready, dried plasmid DNA (reconstitute with 100 ul of water).

Reconstitution Method:

1. Centrifuge at 5,000xg for 5min.
2. Carefully open the tube and add 100ul of sterile water to dissolve the DNA.
3. Close the tube and incubate for 10 minutes at room temperature.
4. Briefly vortex the tube and then do a quick spin (less than 5000xg) to concentrate the liquid at the bottom.
5. Store the suspended plasmid at -20°C. The DNA is stable for at least one year from date of shipping when stored at -20°C.

RefSeq: [NM_024769.5](#)

RefSeq Size: 2645 bp

RefSeq ORF: 1122 bp

Locus ID: 79827

UniProt ID: [Q9H6B4](#)

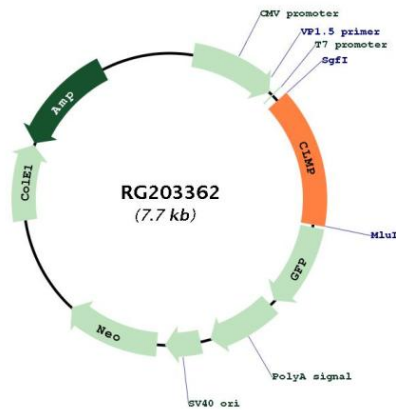
Cytogenetics: 11q24.1

Domains: ig, IGv, IGc2, IG

Protein Families: Transmembrane

Gene Summary: This gene encodes a type I transmembrane protein that is localized to junctional complexes between endothelial and epithelial cells and may have a role in cell-cell adhesion. Expression of this gene in white adipose tissue is implicated in adipocyte maturation and development of obesity. This gene is also essential for normal intestinal development and mutations in the gene are associated with congenital short bowel syndrome. [provided by RefSeq, Aug 2015]

Product images:



Circular map for RG203362