

Product datasheet for **RG203358**

MYO19 (NM_025109) Human Tagged ORF Clone

Product data:

Product Type:	Expression Plasmids
Product Name:	MYO19 (NM_025109) Human Tagged ORF Clone
Tag:	TurboGFP
Symbol:	MYO19
Synonyms:	MYOHD1
Mammalian Cell Selection:	Neomycin
Vector:	pCMV6-AC-GFP (PS100010)
E. coli Selection:	Ampicillin (100 ug/mL)



[View online »](#)

ORF Nucleotide Sequence:

>RG203358 representing NM_025109
 Red=Cloning site Blue=ORF Green=Tags(s)

TTTTGTAATACGACTCACTATAGGGCGGCCGGAATTCGTCGACTGGATCCGGTACCGAGGAGATCTGCC
 GCC**CGCATCGCC**

ATGCTCCAGCAGGTCAATGGCCACAATCCGGGGTCTGATGGCCAAGCCAGGGAGTACCTCAGAGAAGACC
 TGCAGGAGTTCCTGGGTGGGAGGTCTGCTGTACAAACTGGATGACCTACCAGGGTGAATCCTGTGAC
 ACTAGAGACAGTCTGAGGTGCCTGCAGGCCCGGTACATGGCAGACACATTCTACACCAATGCTGGCTGC
 ACCCTGGTAGCCTTGAACCCCTCAAGCCTGTTCTCAGCTCTACTCGCCCGAGCTAATGAGAGAGTACC
 ATGCTGCGCCTCAGCCCCAGAACTGAAGCCCCATGTGTTCACTGTGGTGAACAGACCTACAGGAATGT
 CAAGAGCCTGATTGAACCACTCAACCACTATTGTTGTCAGTGGAGAGAGTGGTCTGGAAGACATGG
 ACGTCTCGCTGCCTAATGAAGTCTATGCTGTGGTGGCCACCTCACCTGCATCTGGGAGAGCCACAAGA
 TTGCAGAGAGGATAGAACAGAGGATCCTGAACCTCAACCTGTCCATGGAAGCTTTGGGAATGCGTGTAC
 ACTGAGGAATAACAACAGCAGTCGCTTTGGGAAGTTCATCCAGCTCCAGCTGAACAGGGCTCAGCAATG
 ACTGGAGCCGAGTCCAGACCTACCTCCTAGAGAAAACCTCGAGTGGCCTGCCAGGCTTCCAGTGAGAGGA
 ACTTCCACATCTTCTATCAGATTTGCAAAGGAGCCAGTGAGGACGAGAGGCTCCAGTGGCACCTTCTGA
 GGGAGCTGCCTTCTCCTGGCTGCCAACCCAGAGAGGAGCTTAGAAGAGGATTGTTTTGAGGTGACCAGA
 GAGGCCATGCTCCATTTGGGCATTGACACCCCTACCCAGAACAACATCTTTAAGGTCTAGCTGGACTGC
 TGCACCTTGGCAATATCCAGTTTGTCTGCCCTCCGAGGATGAAGCCAGCCCTGCCAGCCGATGGATGATGC
 CAAGTACTCTGTGAGGACGGCAGCCTCGCTGCTGGGGCTCCAGAGGACGTGCTGCTGGAGATGGTGCAG
 ATTAGAACCATCAGGGCAGGCAGACAGCAGGTGTTCCGGAAGCCCTGCGCCCGAGCCGAGTGTGACA
 CCCGTAGAGACTGCCTGGCCAACTGATCTATGCGCGGTTGTTGACTGGCTGGTATCAGTGATCAACAG
 CAGCATCTGTGCAGACACCGACTCGTGGACCCTTTCATAGGCCTGCTGGATGTGTATGGATTTGAATCA
 TTTCTGACAACAGTCTGGAACAGTTGTGCATCAACTACGCCAATGAGAAGCTGCAGCTGGAGGCCCTGTG
 GCCTCGTGGAGACCATCCATATCAGTGTGCTGGCTTCCCATCCGGGTCTCTCACCGAACTTTGTAGA
 ACGATACAAGTTACTAAGAAGGCTTCACTCTGCACATCCTCTGGCCCCGACAGCCCATATCCTGCCAAA
 GGGCTCCCTGAATGGTGTCCACACAGCGAGGAAGCCACGCTTGAACCTCTCATCCAGGACATTCTCCACA
 CTCTGCCGGTCTAACTCAGGCAGCAGCCATAACTGGTACTCGGCTGAGGCCATGCCAGCCCCATGCA
 CTGTGGCAGGACCAAGGTGTTGACTGACTCTATGCTGGAGCTTCTGGAATGTGGCGTGGCCGGGTG
 CTGGAGCAGTGTGCCCGCTGCATCCAGGTTGGCTGGAGGGCAGACCCGGCAGGAGCAGGAGCGGCAGT
 GCGGGGCCGTATGCTCATCCAGGCAGCCATTCGTTCTGGTTAACTCGGAAACACATCCAGAGGCTGCA
 TGAGCTGCCACAGTCAATCAAGCGTGCATGGCAGAAAGTGAGAATCAGAATGGCCTGCCTTGTGCTAAA
 GAGCTGGATGGTGTGGAAGAAAAACTTCTCTCAAGCTCCCTGTTCCCTGAGCACCTCGCCGCTGCAGA
 CCAGGCTCCTGGAGGCAATAATCCGCTCTGGCCCTGGGACTGGTCTGGCCAAACCGCTATGGGTGT
 AGGCAGCTTTAGAGGAAATTAGTGGTCTGGGCTTGCCTCCAGCTCCCAGGGGCAGCCCCAGTAGCTAC
 ACTGTCCAGACAGCACAAGACCAGGCTGGTGTACGTCCATCCGAGCGCTGCCTCAGGGATCGATAAAGT
 TTCCTGCAGAAAGTCTCACTGCGGTATGCTGACATCGCCCTGAACCTTACCCTACAGCATTACAGG
 CTTAATCAGATTCTGCTGGAAGACACAGGCTGATCCACGTGACCTTCTGCTTCACTGGGCTGGGG

ACGCGTACGCGGCCGCTCGAG – GFP Tag – GTTTAA

Protein Sequence: >RG203358 representing NM_025109
 Red=Cloning site Green=Tags(s)

```

MLQQVNGHNPGSDGQAREYLREDLQEFLGGEVLLYKLDDLTRVNPVTLETVLRCLQARYMADTFYTNAGC
TLVALNPFKPVPLYSPELMREYHAAPQPQKLKPHVFTVGEQTYRNVKSLIEPVNQSIIVSGESGAGKTW
TSRCLMKFYAVVATSPASWESHKIAERIEQRILNSNPVMEAFGNACTLRNNSSRFGKFIQLQLNRAQQM
TGAAVQTYLLEKTRVACQASSERNFHIFYQICKGASEDERLQWHLPEGAASFSLPNPERSLEEDCFEVTR
EAMLHLGIDTPTQNNIFKVLAGLLHLGNIQFAASEDEAQPCQPMDDAKYSVRTAASLLGLPEDVLLVMVQ
IRTIRAGRQQQVFRKPCARAECDDRRDCLAKLIYARLFDWLVSVINSSICADTDSWTTFIGLLDVYGFES
FPDNSLEQLCINYANEKLEACGLVETIHISAAGFPIRVSHRNVERYKLLRRLHPCTSSGPDSPYPAK
GLPEWCPHSEEATLEPLIQDILHTLPVLTQAAAITGDSAEAMPAMHCGRTKVFMTDSMLELLECGRARV
LEQCARCIOGGWRRHRHREQERQWRAVMLIQAAIRSWLTKHIQRLHAAATVIKRAWQKWRIRMACLAAK
ELDGVEEKHFSQAPCSLSTPLQTRLLEAIIRLWPLGLVLANTAMGVGSFQRKLVVWACLQLPRGSPSSY
TVQTAQDQAGVTSIRALPQGSIKFHCRKSPLRYADICPEPSPYSITGFNQILLERHRLIHVTSSAFTGLG
  
```

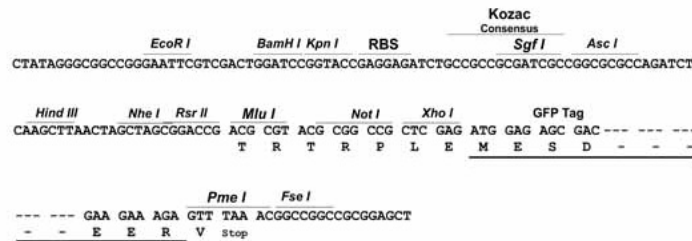
TRTRPLE - GFP Tag - V

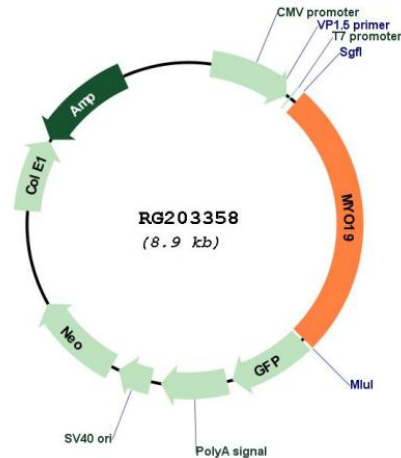
Restriction Sites:

SgfI-MluI

Cloning Scheme:

Cloning sites used for ORF Shutting:



Plasmid Map:


ACCN: NM_025109

ORF Size: 2310 bp

OTI Disclaimer: The molecular sequence of this clone aligns with the gene accession number as a point of reference only. However, individual transcript sequences of the same gene can differ through naturally occurring variations (e.g. polymorphisms), each with its own valid existence. This clone is substantially in agreement with the reference, but a complete review of all prevailing variants is recommended prior to use. [More info](#)

OTI Annotation: This clone was engineered to express the complete ORF with an expression tag. Expression varies depending on the nature of the gene.

Components: The ORF clone is ion-exchange column purified and shipped in a 2D barcoded Matrix tube containing 10ug of transfection-ready, dried plasmid DNA (reconstitute with 100 ul of water).

Reconstitution Method:

1. Centrifuge at 5,000xg for 5min.
2. Carefully open the tube and add 100ul of sterile water to dissolve the DNA.
3. Close the tube and incubate for 10 minutes at room temperature.
4. Briefly vortex the tube and then do a quick spin (less than 5000xg) to concentrate the liquid at the bottom.
5. Store the suspended plasmid at -20°C. The DNA is stable for at least one year from date of shipping when stored at -20°C.

RefSeq: [NM_025109.3](#)

RefSeq Size: 3258 bp

RefSeq ORF: 2313 bp

Locus ID: 80179

UniProt ID: [Q96H55](#)

Cytogenetics: 17q12

Domains: IQ, myosin_head

Gene Summary: Actin-based motor molecule with ATPase activity that localizes to the mitochondrion outer membrane (PubMed:19932026, PubMed:23568824, PubMed:25447992). Motor protein that moves towards the plus-end of actin filaments (By similarity). Required for mitochondrial inheritance during mitosis (PubMed:25447992). May be involved in mitochondrial transport or positioning (PubMed:23568824).[UniProtKB/Swiss-Prot Function]