

Product datasheet for **RG203334**

RSU1 (NM_012425) Human Tagged ORF Clone

Product data:

Product Type:	Expression Plasmids
Product Name:	RSU1 (NM_012425) Human Tagged ORF Clone
Tag:	TurboGFP
Symbol:	RSU1
Synonyms:	RSP-1
Mammalian Cell Selection:	Neomycin
Vector:	pCMV6-AC-GFP (PS100010)
E. coli Selection:	Ampicillin (100 ug/mL)
ORF Nucleotide Sequence:	>RG203334 representing NM_012425 Red=Cloning site Blue=ORF Green=Tags(s)

TTTTGTAATACGACTCACTATAGGGCGGCCGGAATTCGTCGACTGGATCCGGTACCGAGGAGATCTGCC
GCC**CGATCGCC**

ATGTCCAAGTCTCTGAAGAAGTTGGTGGAGGAGAGCCGGGAGAAGAACCAGCCCGAGGTGGACATGAGTG
ACCGGGGCATCTCCAACATGCTGGATGTCAACGGCCTCTTTACCTTATCCCATATCACACAACTGGTCCT
CAGCCATAACAAGCTAACAATGGTGCCACCGAACATCGCAGAAGTGAAGAATTTGGAGGTGCTCAACTTT
TTTAATAACCAAATCGAGGAGCTGCCACACAGATCAGTAGCCTTCAGAACTCAAACACCTGAACCTTG
GCATGAACAGGCTGAACACTTTGCCACGAGGCTTCGGCTCCCTGCCAGCTCTTGAGGTTCTGGACTTGAC
GTACAACAACTTGAGCGAAAATCTCTTCTGGAACTTCTTCTACCTGACCACCCTGCGTGCACCTCTAT
CTAAGTGACAACGATTTTGAAATCCTGCCGCCAGATATTGGGAAGCTCACAAAGTTGCAGATACTCAGCC
TTAGGGATAACGACCTGATCTCGCTGCCTAAGGAAATCGGGGAGCTTACCCAGCTTAAAGAGCTCCACAT
TCAGGGGAACCGCCTCACCGTTCTGCCCCAGAAGTGGAACTTGGATTTAACTGGCCAGAAGCAGGTA
TTCAAAGCAGAGAACAATCCCTGGGTGACCCCATTCAGACCAGTTCAGCTTGGCGTGTCCCATGTTT
TTGAGTATATCCGTTCTGAGACATACAAATACCTCTACGGCAGACACATGCAGGCCAACCCAGAACCACC
GAAGAAGAATAATGACAAATCGAAAAAGATCAGCCGAAACCCCTGGCAGCCAAGAACAGA

ACGCGTACGCGGCCGCTCGAG - GFP Tag - GTTTAA



[View online »](#)

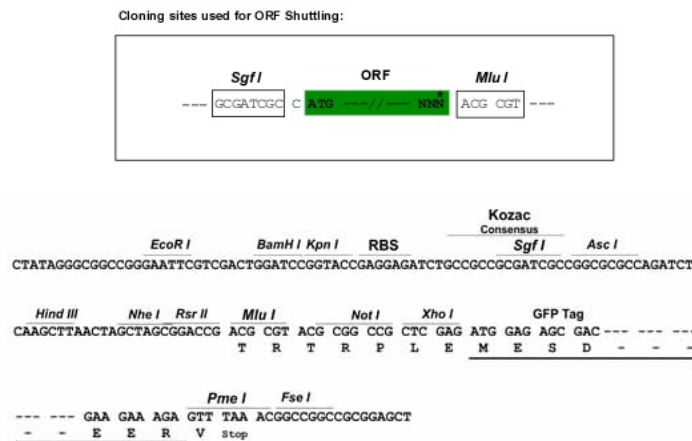
Protein Sequence: >RG203334 representing NM_012425
 Red=Cloning site Green=Tags(s)

MSKSLKKLVEESREKNQPEVDMSDRGISNMLDVNGLFTLSHITQLVL SHNKL TMVPPNIAELKNLEVLNF
 FNNQIEELPTQISSLQKLKHLNLMGNRLNTPRFGSLPALEVLDTYNNLSENPLGNFFYL TTLRALY
 LSDNDFEILPPDIGLTKLQILSLRDNDLISLPKEIGELTQLKELHIQGNRLTVLPPELGNLDTGQKQV
 FKAENNPWVTPADQFQLGVSHVFEYIRSETYKYL YGRHMQANPEPPKKNNDKSKKISRKPLAAKNR

TRTRPLE - GFP Tag - V

Restriction Sites: SgfI-MluI

Cloning Scheme:



ACCN: NM_012425

ORF Size: 831 bp

OTI Disclaimer: The molecular sequence of this clone aligns with the gene accession number as a point of reference only. However, individual transcript sequences of the same gene can differ through naturally occurring variations (e.g. polymorphisms), each with its own valid existence. This clone is substantially in agreement with the reference, but a complete review of all prevailing variants is recommended prior to use. [More info](#)

OTI Annotation: This clone was engineered to express the complete ORF with an expression tag. Expression varies depending on the nature of the gene.

Components: The ORF clone is ion-exchange column purified and shipped in a 2D barcoded Matrix tube containing 10ug of transfection-ready, dried plasmid DNA (reconstitute with 100 ul of water).

Reconstitution Method:

1. Centrifuge at 5,000xg for 5min.
2. Carefully open the tube and add 100ul of sterile water to dissolve the DNA.
3. Close the tube and incubate for 10 minutes at room temperature.
4. Briefly vortex the tube and then do a quick spin (less than 5000xg) to concentrate the liquid at the bottom.
5. Store the suspended plasmid at -20°C. The DNA is stable for at least one year from date of shipping when stored at -20°C.

RefSeq: [NM_012425.4](#)

RefSeq Size: 3769 bp

RefSeq ORF: 834 bp

Locus ID: 6251

UniProt ID: [Q15404](#)

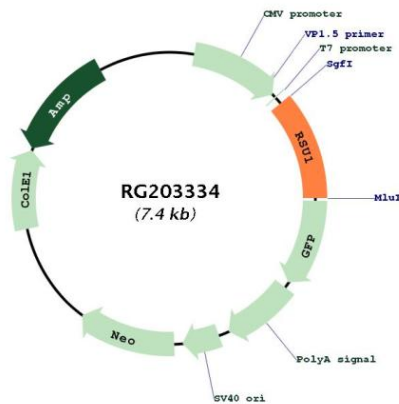
Cytogenetics: 10p13

Domains: LRR, LRR_TYP, LRR_PS

Protein Families: Druggable Genome

Gene Summary: This gene encodes a protein that is involved in the Ras signal transduction pathway, growth inhibition, and nerve-growth factor induced differentiation processes, as determined in mouse and human cell line studies. In mouse, the encoded protein was initially isolated based on its ability to inhibit v-Ras transformation. Multiple alternatively spliced transcript variants for this gene have been reported; one of these variants was found only in glioma tumors. [provided by RefSeq, Jul 2008]

Product images:



Circular map for RG203334