

Product datasheet for **RG203324**

CIP29 (SARNP) (NM_033082) Human Tagged ORF Clone

Product data:

Product Type: Expression Plasmids
Product Name: CIP29 (SARNP) (NM_033082) Human Tagged ORF Clone
Tag: TurboGFP
Symbol: CIP29
Synonyms: CIP29; HCC1; HSPC316; THO1
Mammalian Cell Selection: Neomycin
Vector: pCMV6-AC-GFP (PS100010)
E. coli Selection: Ampicillin (100 ug/mL)
ORF Nucleotide Sequence: >RG203324 representing NM_033082
 Red=Cloning site Blue=ORF Green=Tags(s)

TTTTGTAATACGACTCACTATAGGGCGGCCGGAATTCGTCGACTGGATCCGGTACCGAGGAGATCTGCC
 GCC**CGATCGCC**

ATGGCGACCGAGACGGTGGAGCTCCATAAGCTAAAGCTTGCCGAAGCAAGAATGTCTTGCTCGTG
 GTTTGGAGACCAAGGGAATAAGCAAGATCTTATCCAGACTCCAGGCATATCTGAAGAACATGCTGA
 AGAGGAGGCAAAATGAAGAAGATGTACTGGGAGATGAAACAGAGGAAGAAGAAACAAAGCCATTGAGCTC
 CCTGTCAAAGAGGAAGAACCCCTGAAAAAAGTGTGATGTGCCAGCAGAGAAGAAAGTGGTGAATAA
 CATCTGAAATACCACAGACTGAGAGAATGCAGAAGAGGGCTGAACGATTCATGTACCTGTGAGCTTGA
 GAGTAAGAAAGCTGCTCGGCAGCTAGGTTTGGGATTTCTTCAGTTCCAACAAAAGGTCTGTCATCTGAT
 AACAAACCTATGGTAACTTGGATAAGCTGAAGGAAAGAGCTCAAAGATTTGGTTGAATGTCTCTTCAA
 TCTCCAGAAAGTCTGAAGATGATGAGAACTGAAAAAGAGGAAGGAGCGATTTGGGATTGTCACAAGTTC
 AGCTGGAAGTGAACACAGAGGATACAGAGGCAAGAAGAGGAAAGAGCAGAGCGCTTTGGGATTGCC

ACGCGTACGCGGCCGCTCGAG - GFP Tag - GTTTAA

Protein Sequence: >RG203324 representing NM_033082
 Red=Cloning site Green=Tags(s)

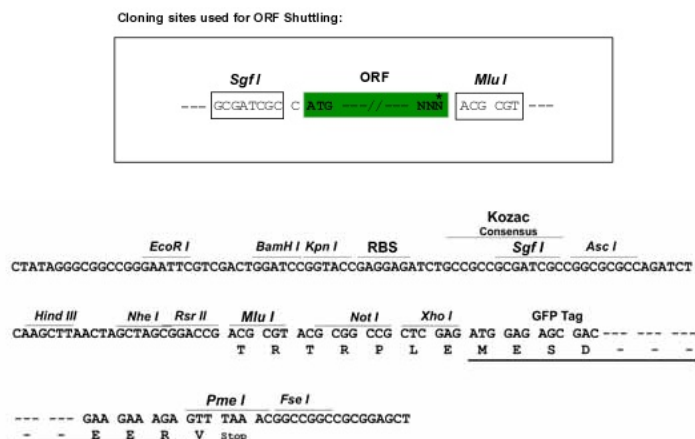
MATETVELHKLKLAELKQECLARGLETGKIKQDLIHRLQAYLEEHAEENEEDVLGDETEEEETKPIEL
 PVKEEPEKTVDAEKKVVKITSEIPQTERMQKRAERFNPVLSLESKKAARAARFGISSVPTKGLSSD
 NKPMVNLDKLKERARFGLNVSSISRKSEDEKLKKRERFIVTSSAGTGTTEDEAKKRKRAERFGIA

TRTRPLE - GFP Tag - V

Restriction Sites: Sgfl-MluI



[View online »](#)

Cloning Scheme:


ACCN: NM_033082

ORF Size: 630 bp

OTI Disclaimer: The molecular sequence of this clone aligns with the gene accession number as a point of reference only. However, individual transcript sequences of the same gene can differ through naturally occurring variations (e.g. polymorphisms), each with its own valid existence. This clone is substantially in agreement with the reference, but a complete review of all prevailing variants is recommended prior to use. [More info](#)

OTI Annotation: This clone was engineered to express the complete ORF with an expression tag. Expression varies depending on the nature of the gene.

Components: The ORF clone is ion-exchange column purified and shipped in a 2D barcoded Matrix tube containing 10ug of transfection-ready, dried plasmid DNA (reconstitute with 100 ul of water).

Reconstitution Method:

1. Centrifuge at 5,000xg for 5min.
2. Carefully open the tube and add 100ul of sterile water to dissolve the DNA.
3. Close the tube and incubate for 10 minutes at room temperature.
4. Briefly vortex the tube and then do a quick spin (less than 5000xg) to concentrate the liquid at the bottom.
5. Store the suspended plasmid at -20°C. The DNA is stable for at least one year from date of shipping when stored at -20°C.

RefSeq: [NM_033082.4](#)

RefSeq Size: 923 bp

RefSeq ORF: 633 bp

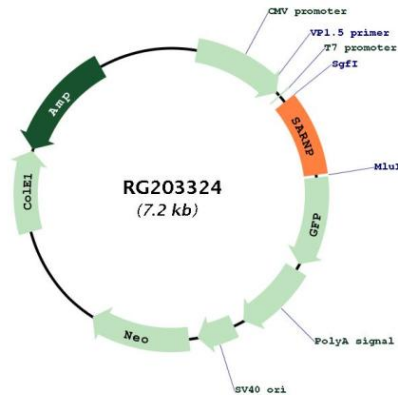
Locus ID: 84324

UniProt ID: [P82979](#)

Cytogenetics: 12q13.2

Gene Summary:

This gene encodes a protein that is upregulated in response to various cytokines. The encoded protein may play a role in cell cycle progression. A translocation between this gene and the myeloid/lymphoid leukemia gene, resulting in expression of a chimeric protein, has been associated with acute myelomonocytic leukemia. Pseudogenes exist on chromosomes 7 and 8. Alternatively spliced transcript variants have been described. [provided by RefSeq, Feb 2009]

Product images:

Circular map for RG203324