

Product datasheet for **RG203308**

CISD1 (NM_018464) Human Tagged ORF Clone

Product data:

Product Type: Expression Plasmids
Product Name: CISD1 (NM_018464) Human Tagged ORF Clone
Tag: TurboGFP
Symbol: CISD1
Synonyms: C10orf70; MDS029; mitoNEET; ZCD1
Mammalian Cell Selection: Neomycin
Vector: pCMV6-AC-GFP (PS100010)
E. coli Selection: Ampicillin (100 ug/mL)
ORF Nucleotide Sequence: >RG203308 representing NM_018464
Red=Cloning site **Blue**=ORF **Green**=Tags(s)

TTTTGTAATACGACTCACTATAGGGCGGCCGGAATTCGTCGACTGGATCCGGTACCGAGGAGATCTGCC
GCC**CGATCGCC**

ATGAGTCTGACTTCCAGTTCAGCGTACGAGTTGAATGGATCGCAGCAGTTACCATTGCTGCTGGGACAG
CTGCAATTGGTTATCTAGCTTACAAAAGATTTTATGTTAAAGATCATCGAAATAAGCTATGATAAACCT
TCACATCCAGAAAGACAACCCCAAGATAGTACATGCTTTTGACATGGAGGATTTGGGAGATAAAGCTGTG
TACTGCCGTTGTTGGAGGTCCAAAAGTCCCATTCTGTGATGGGGCTCACACAAAACATAACGAAGAGA
CTGGAGACAATGTGGCCCTCTGATCATCAAGAAAAAGAACT

ACGCGTACGCGGCCGCTCGAG - GFP Tag - GTTTAA

Protein Sequence: >RG203308 representing NM_018464
Red=Cloning site **Green**=Tags(s)
MSLTSSSSVRVEWIAAVTIAAGTAAIGYLAYKRFYVKDHRNKAMINLHIQKDNPKIVHAFDMEDLGDKAV
YCRCWRSKKFPFCDAHTKHNEETGDNVGPLIIKKET

TRTRPLE - GFP Tag - V

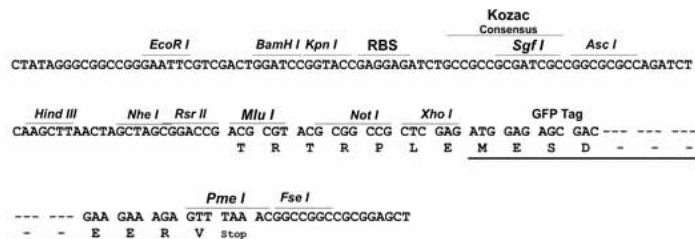
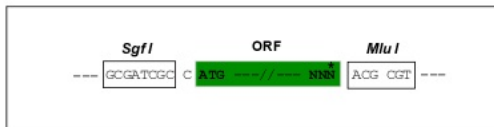
Restriction Sites: Sgfl-MluI



[View online »](#)

Cloning Scheme:

Cloning sites used for ORF Shutting:



ACCN: NM_018464

ORF Size: 324 bp

OTI Disclaimer: The molecular sequence of this clone aligns with the gene accession number as a point of reference only. However, individual transcript sequences of the same gene can differ through naturally occurring variations (e.g. polymorphisms), each with its own valid existence. This clone is substantially in agreement with the reference, but a complete review of all prevailing variants is recommended prior to use. [More info](#)

OTI Annotation: This clone was engineered to express the complete ORF with an expression tag. Expression varies depending on the nature of the gene.

Components: The ORF clone is ion-exchange column purified and shipped in a 2D barcoded Matrix tube containing 10ug of transfection-ready, dried plasmid DNA (reconstitute with 100 ul of water).

Reconstitution Method:

1. Centrifuge at 5,000xg for 5min.
2. Carefully open the tube and add 100ul of sterile water to dissolve the DNA.
3. Close the tube and incubate for 10 minutes at room temperature.
4. Briefly vortex the tube and then do a quick spin (less than 5000xg) to concentrate the liquid at the bottom.
5. Store the suspended plasmid at -20°C. The DNA is stable for at least one year from date of shipping when stored at -20°C.

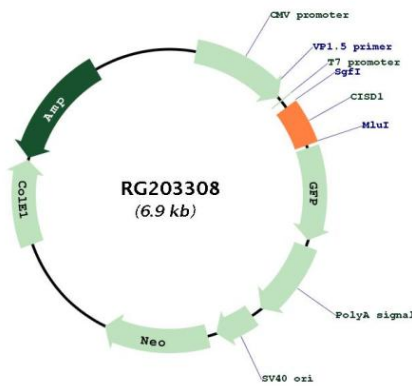
RefSeq: [NM_018464.5](#)

RefSeq Size: 925 bp

RefSeq ORF: 327 bp

Locus ID: 55847
UniProt ID: [Q9NZ45](#)
Cytogenetics: 10q21.1
Domains: ZnF_CDGSH
Protein Families: Transmembrane
Gene Summary: This gene encodes a protein with a CDGSH iron-sulfur domain and has been shown to bind a redox-active [2Fe-2S] cluster. The encoded protein has been localized to the outer membrane of mitochondria and is thought to play a role in regulation of oxidation. Genes encoding similar proteins are located on chromosomes 4 and 17, and a pseudogene of this gene is located on chromosome 2. [provided by RefSeq, Feb 2012]

Product images:



Circular map for RG203308