

## Product datasheet for **RG203281**

### **C20orf114 (BPIFB1) (NM\_033197) Human Tagged ORF Clone**

#### **Product data:**

Product Type:	Expression Plasmids
Product Name:	C20orf114 (BPIFB1) (NM_033197) Human Tagged ORF Clone
Tag:	TurboGFP
Symbol:	BPIFB1
Synonyms:	C20orf114; LPLUNC1
Mammalian Cell Selection:	Neomycin
Vector:	pCMV6-AC-GFP (PS100010)
E. coli Selection:	Ampicillin (100 ug/mL)



[View online »](#)

**ORF Nucleotide Sequence:**

>RG203281 representing NM\_033197  
 Red=Cloning site Blue=ORF Green=Tags(s)

TTTTGTAATACGACTCACTATAGGGCGGCCGGGAATTCGTCGACTGGATCCGGTACCGAGGAGATCTGCC  
 GCC**CGGATCGCC**

ATGGCCGGCCCGTGGACCTTACCCCTTCTGTGGTTTGTGGCAGCCACCTTGATCCAAGCCACCCTCA  
 GTCCACTGCAGTTCTCATCCTCGGCCAAAAGTCATCAAAGAAAAGCTGACACAGGAGCTGAAGGACCA  
 CAACGCCACCAGCATCCTGCAGCAGCTGCCGCTGCTCAGTGCCATGCGGGAAAAGCCAGCCGGAGGCATC  
 CCTGTGCTGGGCAGCCTGGTGAACACCGTCTGAAGCAGTCATCTGGCTGAAGGTCATCACAGTAACA  
 TCCTCCAGCTGCAGGTGAAGCCCTCGGCCAATGACCAGGAGCTGTAGTCAAGATCCCCCTGGACATGGT  
 GGCTGGATTCAACACGCCCTGGTCAAGACCATCGTGGAGTTCACATGACGACTGAGGCCCAAGCCACC  
 ATCCGCATGGACACCAGTGAAGTGGCCCCACCCGCTGGTCTCAGTGACTGTGCCACCAGCCATGGGA  
 GCCTGCGCATCCAACCTGCTGCATAAGCTCTCCTTCTGGTGAACGCCTTAGCTAAGCAGGTCATGAACCT  
 CCTAGTGCCATCCCTGCCAATCTAGTAAAAACCAGCTGTGTCCCGTATCGAGGCTTCCCTCAATGGC  
 ATGTATGCAGACCTCTGCAGCTGGTGAAGGTGCCATTTCCCTCAGCATTGACCGTCTGGAGTTTGACC  
 TTCTGTATCCTGCCATCAAGGGTGACACCATTAGCTCTACCTGGGGCCAAGTTGTTGGACTCACAGGG  
 AAAGGTGACCAAGTGGTCAATAACTCTGCAGCTTCCCTGACAATGCCACCCTGGACAACATCCCGTTC  
 AGCCTCATCGTGAGTCAGGACGTGGTGAAGCTGCAGTGGCTGCTGTGCTCTCTCCAGAAGAATTATGG  
 TCCTGTTGGACTCTGTGCTTCTGAGAGTGCCATCGGCTGAAGTCAAGCATCGGCTGATCAATGAAAA  
 GGCTGCAGATAAGCTGGGATCTACCCAGATCGTGAAGTCCCTAACTCAGGACACTCCCGAGTTTTTATA  
 GACCAAGGCCATGCCAAGGTGGCCAACTGATCGTGTGGAAGTGTTCCTCCAGTGAAGCCCTCCGCC  
 CTTTGTTCACCCCTGGGCATCGAAGCCAGCTCGGAAGCTCAGTTTTACACCAAAGGTGACCAACTTACT  
 CAACTGAATAACATCAGCTCTGATCGGATCCAGCTGATGAACTCTGGGATTGGCTGTTCCAACCTGAT  
 GTTCTGAAAAACATCACTGAGATCATCCACTCCATCCTGCTGCCGAACCAGAATGGCAAATTAAGAT  
 CTGGGGTCCCAGTGTATTGGTGAAGGCCTTGGGATTCGAGGCAGCTGAGTCTCACTGAGCAAGGATGC  
 CCTTGTGCTTACTCCAGCCTCCTGTGGAAACCCACCTCTCCTGTCTCCAG

**ACGCGTACGCGGCCGCTCGAG** – GFP Tag – GTTTAA

**Protein Sequence:**

>RG203281 representing NM\_033197  
 Red=Cloning site Green=Tags(s)

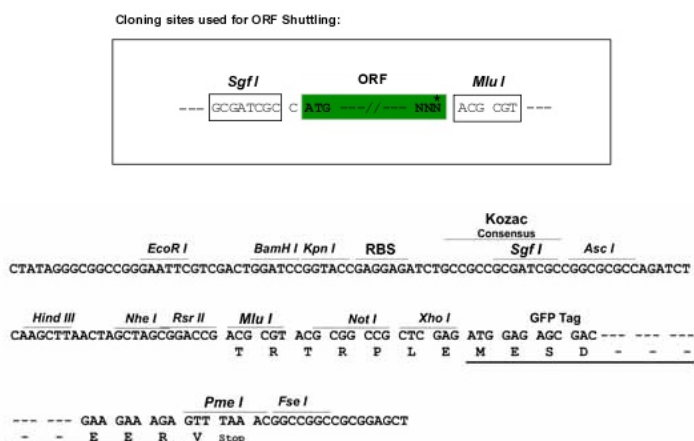
MAGPWTFTLLCGLLAATLIQATLSPTAVLILGPKVIKEKLTQELKDNATSILQQLPLL SAMREKPAGGI  
 PVLGSLVNTVLKHVIWLKVITANILQLQVKPSANDQELLVKIPLDMVAGFNTPLVKTIVEFHMTTEAQAT  
 IRMDTSASGPTLVLSDCATSHGSLRIQLLHKL SFLVNALAKQVMNLLVPSLPNLVKNQLCPVIEASFNG  
 MYADLLQLVKVPISLSIDRLEFDLLYPAIKGDTIQLYLGAKL LDSQGKVTWKFNNASAASLTMPTLDNIPF  
 SLIVSQDVVKA AVAVLSPEEFMVLLDSVLPESAHRLKSSIGLINEKAADKLGSTQIVKILTQDTPEFFI  
 DQGHAKVAQLIVLEVFPSEALRPLFTLGIEASSEAQFYTKGDQLILNLNNISSDRIQLMNSGIGWFQPD  
 VLKNIITEIIHSILLPNQNGKLRSVPSLVKALGFEAAESSLSKDALVLTASLWKPTSPVSQ

**TRTRPLE** – GFP Tag – V

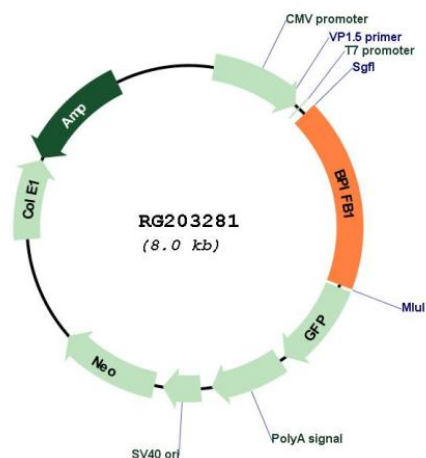
**Restriction Sites:**

Sgfl-MluI

**Cloning Scheme:**



**Plasmid Map:**



- ACCN:** NM\_033197
- ORF Size:** 1452 bp
- OTI Disclaimer:** The molecular sequence of this clone aligns with the gene accession number as a point of reference only. However, individual transcript sequences of the same gene can differ through naturally occurring variations (e.g. polymorphisms), each with its own valid existence. This clone is substantially in agreement with the reference, but a complete review of all prevailing variants is recommended prior to use. [More info](#)
- OTI Annotation:** This clone was engineered to express the complete ORF with an expression tag. Expression varies depending on the nature of the gene.
- Components:** The ORF clone is ion-exchange column purified and shipped in a 2D barcoded Matrix tube containing 10ug of transfection-ready, dried plasmid DNA (reconstitute with 100 ul of water).

**Reconstitution Method:**

1. Centrifuge at 5,000xg for 5min.
2. Carefully open the tube and add 100ul of sterile water to dissolve the DNA.
3. Close the tube and incubate for 10 minutes at room temperature.
4. Briefly vortex the tube and then do a quick spin (less than 5000xg) to concentrate the liquid at the bottom.
5. Store the suspended plasmid at -20°C. The DNA is stable for at least one year from date of shipping when stored at -20°C.

**RefSeq:** [NM\\_033197.1](#)

**RefSeq Size:** 1734 bp

**RefSeq ORF:** 1455 bp

**Locus ID:** 92747

**UniProt ID:** [Q8TDL5](#)

**Cytogenetics:** 20q11.21

**Protein Families:** Druggable Genome, Secreted Protein, Transmembrane

**Gene Summary:** The protein encoded by this gene may be involved in the innate immune response to bacterial exposure in the mouth, nasal cavities, and lungs. The encoded protein is secreted and is a member of the BPI/LBP/PLUNC protein superfamily. This gene is found with other members of the superfamily in a cluster on chromosome 20. [provided by RefSeq, Jul 2008]