

Product datasheet for **RG203226**

Inhibin beta A (INHBA) (NM_002192) Human Tagged ORF Clone

Product data:

Product Type:	Expression Plasmids
Product Name:	Inhibin beta A (INHBA) (NM_002192) Human Tagged ORF Clone
Tag:	TurboGFP
Symbol:	Inhibin beta A
Synonyms:	EDF; FRP
Mammalian Cell Selection:	Neomycin
Vector:	pCMV6-AC-GFP (PS100010)
E. coli Selection:	Ampicillin (100 ug/mL)
ORF Nucleotide Sequence:	>RG203226 representing NM_002192 Red=Cloning site Blue=ORF Green=Tags(s)

TTTTGTAATACGACTCACTATAGGGCGGCCGGAATTCGTCGACTGGATCCGGTACCGAGGAGATCTGCC
GCC**CGATCGCC**

ATGCCCTTGCTTTGGCTGAGAGGATTTCTGTTGGCAAGTTGCTGGATTATAGTGAGGAGTCCCCACCC
CAGGATCCGAGGGGCACAGCGCGCCCGGACTGTCCGTCCTGTGCGCTGGCCGCCCTCCCAAAGGATGT
ACCCAACCTCTCAGCCAGAGATGGTGGAGCCGTCAGAAGCACATTTTAAACATGCTGCACTTGAAGAAG
AGACCCGATGTCACCCAGCCGGTACCCAAGCGCGCTTCTGAACGCGATCAGAAAGCTTCATGTGGCA
AAGTCGGGAGAACGGGTATGTGGAGATAGAGGATGACATTGGAAGGAGGGCAGAAATGAATGAACTTAT
GGAGCAGACCTCGGAGATCATCACGTTTCCGAGTCAGGAACAGCCAGGAAGACGCTGCACTTCGAGATT
TCCAAGGAAGGCAGTGACCTGTCAGTGGTGGAGCGTGCAGAACTGGCTCTTCCCTAAAAGTCCCAAGG
CCAACAGGACCAGGACCAAAGTACCATCCGCCTCTCCAGCAGCAGAAGCACCCGAGGGCAGCTTGGGA
CACAGGGGAGAGGGCCGAGGAAGTGGGCTTAAAGGGGAGAGGAGTGAAGTGTGCTCTCTGAAAAAGTA
GTAGACGCTCGGAAGAGCACCTGGCATGTCTTCCCTGTCTCCAGCAGCATCCAGCGGTTGCTGGACCAGG
GCAAGAGCTCCCTGGACGTTCCGATTGCCTGTGAGCAGTGCCAGGAGAGTGGCGCCAGCTTGGTTCTCT
GGGCAAGAAGAAGAAGAAGAAGAGGAGGGGGAAGGAAAAAAGAGGGCGGAGGTGAAGGTGGGGCAGGA
GCAGATGAGGAAAAGGAGCAGTCGCACAGACCTTTCCTCATGCTGCAGGCCCGGAGTGAAGACCACC
CTCATCGCCGGCGTCGGCGGGGCTTGGAGTGTGATGGCAAGGTCAACATCTGCTGTAAAGAACAGTTCTT
TGTCAGTTTCAAGGACATCGGCTGGAATGACTGGATCATTGCTCCCTCTGGCTATCATGCCAACTACTGC
GAGGGTGAAGTGCCGAGCCATATAGCAGGCACGTCGGGTCTCACTGTCTTCCACTCAACAGTCATCA
ACCACTACCGCATGCGGGGCCATAGCCCTTTGCCAACCTCAAATCGTGTGTGTGCCACCAAGCTGAG
ACCCATGTCCATGTTGTACTATGATGATGGTCAAACATCATCAAAAAGGACATTCAGAACATGATCGTG
GAGGAGTGTGGGTGCTCA

ACGCGTACGCGGCCGCTCGAG - GFP Tag - GTTTAA



[View online »](#)

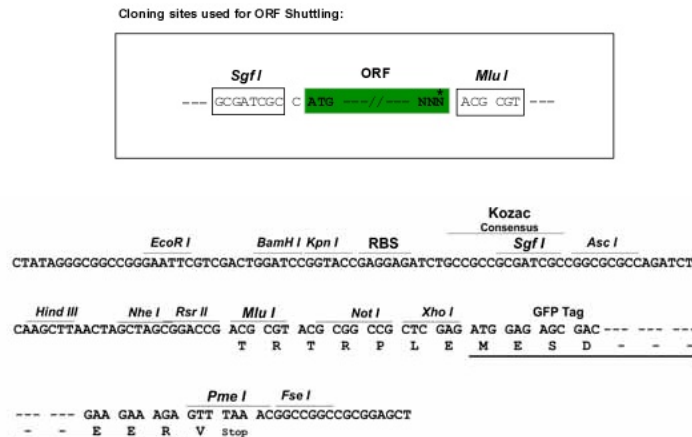
Protein Sequence: >RG203226 representing NM_002192
 Red=Cloning site Green=Tags(s)

MPLLWLRGFLASCWIIVRSSPTPGSEGHSAAPDCPSCALALPKDVPNSQPEMVEAVKKHILNMLHLKK
 RPDVTQVPVKAALLNAIRKLVHGKVGGENGYVEIEDDIGRRAEMNELMEQTSEIITFAESGTARKTLHFEI
 SKEGSDLVVERAEVWFLFKVPKANRTRTKVTIRLFQQQKHPQGLDGTGEEAAEEVGLKGERSELLSEKV
 VDARKSTWHVFPVSSSIQRLLDQKSSLDVRIACEQCQESGASLVLLGKKKKKEEGEGKKKGGGEGGAG
 ADEEKEQSHRPFLMLQARQSEDHPHRRRRRGLECDGKVNICCKKQFFVFSFKDIGWNDWIIAPSGYHANYC
 EGECPSHIAGTSGSSLSFHSTVINHYMRGHSPFANLKSCCVPTKLRPMSMLYDDGQNIKKDIQNMIV
 EECGCS

TRTRPLE – GFP Tag – V

Restriction Sites: SgfI-MluI

Cloning Scheme:



ACCN: NM_002192

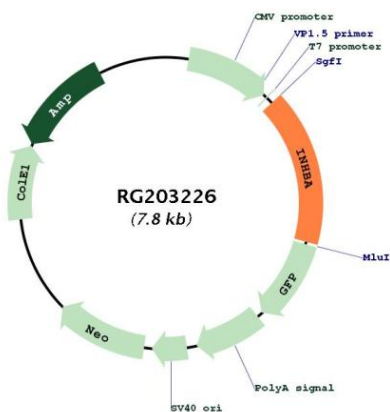
ORF Size: 1278 bp

OTI Disclaimer: Due to the inherent nature of this plasmid, standard methods to replicate additional amounts of DNA in E. coli are highly likely to result in mutations and/or rearrangements. Therefore, OriGene does not guarantee the capability to replicate this plasmid DNA. Additional amounts of DNA can be purchased from OriGene with batch-specific, full-sequence verification at a reduced cost. Please contact our customer care team at custsupport@origene.com or by calling 301.340.3188 option 3 for pricing and delivery.

The molecular sequence of this clone aligns with the gene accession number as a point of reference only. However, individual transcript sequences of the same gene can differ through naturally occurring variations (e.g. polymorphisms), each with its own valid existence. This clone is substantially in agreement with the reference, but a complete review of all prevailing variants is recommended prior to use. [More info](#)

OTI Annotation:	This clone was engineered to express the complete ORF with an expression tag. Expression varies depending on the nature of the gene.
Components:	The ORF clone is ion-exchange column purified and shipped in a 2D barcoded Matrix tube containing 10ug of transfection-ready, dried plasmid DNA (reconstitute with 100 ul of water).
Reconstitution Method:	<ol style="list-style-type: none">1. Centrifuge at 5,000xg for 5min.2. Carefully open the tube and add 100ul of sterile water to dissolve the DNA.3. Close the tube and incubate for 10 minutes at room temperature.4. Briefly vortex the tube and then do a quick spin (less than 5000xg) to concentrate the liquid at the bottom.5. Store the suspended plasmid at -20°C. The DNA is stable for at least one year from date of shipping when stored at -20°C.
RefSeq:	NM_002192.4
RefSeq Size:	2175 bp
RefSeq ORF:	1281 bp
Locus ID:	3624
UniProt ID:	P08476
Cytogenetics:	7p14.1
Domains:	TGFb_propeptide, TGF-beta
Protein Families:	Druggable Genome, Secreted Protein
Protein Pathways:	Cytokine-cytokine receptor interaction, TGF-beta signaling pathway
Gene Summary:	This gene encodes a member of the TGF-beta (transforming growth factor-beta) superfamily of proteins. The encoded preproprotein is proteolytically processed to generate a subunit of the dimeric activin and inhibin protein complexes. These complexes activate and inhibit, respectively, follicle stimulating hormone secretion from the pituitary gland. The encoded protein also plays a role in eye, tooth and testis development. Elevated expression of this gene may be associated with cancer cachexia in human patients. [provided by RefSeq, Aug 2016]

Product images:



Circular map for RG203226