

## Product datasheet for **RG203224**

### RNF166 (NM\_178841) Human Tagged ORF Clone

#### Product data:

**Product Type:** Expression Plasmids  
**Product Name:** RNF166 (NM\_178841) Human Tagged ORF Clone  
**Tag:** TurboGFP  
**Symbol:** RNF166  
**Mammalian Cell Selection:** Neomycin  
**Vector:** pCMV6-AC-GFP (PS100010)  
**E. coli Selection:** Ampicillin (100 ug/mL)  
**ORF Nucleotide Sequence:** >RG203224 representing NM\_178841  
 Red=Cloning site Blue=ORF Green=Tags(s)

TTTTGTAATACGACTCACTATAGGGCGGCCGGAATTCGTCGACTGGATCCGGTACCGAGGAGATCTGCC  
 GCC**CGATCGCC**

ATGGCTATGTTCCGCAGCCTGGTGGCCTCGGCTCAGCAGCGGCAGCCGCCGGCCGGGCGGGCGGGCGGGC  
 ACAGCGGCCTGGAGGCGCAGTACACCTGCCCATCTGCCTGGAGGTCTATCACCGGCCGTGGCCATCGG  
 CAGCTGCGGCCACACGTTCTGCGGGGAGTGTCTCCAGCCCTGCCTGCAGGTGCCATCCCCGCTGTGCCCA  
 CTGTGCCGCTGCCCTTCGACCCCAAGAAGGTGGACAAGGCCACCCACGTGGAGAAGCAGCTCTCATCCT  
 ACAAAAGCCCTGTCGAGGCTGCAACAAAAAGGTGACCCTGGCAAAGATGAGAGTGCACATTTTCGTCCTG  
 CCTGAAGTCCAGGAGCAGATGGCCAAGTCCCAAGTTCGTCGCCGTGGTGGCCACATCACAGCCTATC  
 CCCAGCAACATCCCAACAGGTCCACCTTCGCCTGCCCGTACTGTGGTGGCCGCAACCTGGACCAGCAGG  
 AGCTGGTGAAGCACTGTGTGAAAGCCACCGCAGCGACCCCAACCGGTGGTGTGCCCATCTGCTCGGC  
 AATGCCCTGGGGGACCCAGCTACAAGAGCGCAACTTCCTGCAGCACCTGCTTACCAGACACAAGTTC  
 TCCTACGACACCTTTGTGGACTACAGTATTGACGAGGAGGCCGCTTCCAGGCTGCTCTGGCCCTGTCTC  
 TCTCTGAGAAC

**ACGCGTACGCGGCCGCTCGAG** - GFP Tag - GTTTAA

**Protein Sequence:** >RG203224 representing NM\_178841  
 Red=Cloning site Green=Tags(s)

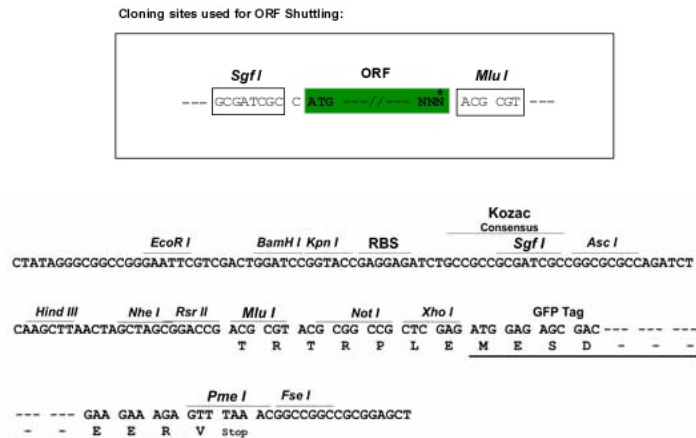
MAMFRSLVASAQQRQPPAGPAGGDSGLEAQYTCPICLEVYHRPVAIGSCGHTFCGECLQPCLQVPSPLCP  
 LCRLPFDPKKVDKATHVEKQLSSYKAPCRGCNKKVTLAKMRVHISCLKVQEQMANCPKFVPVPTSQPI  
 PSNIPNRSTFACPYCGARNLDQQLVKHCVESHRSDPNRVVCPICAMPWGDPSYKSANFLQHLLHRHKF  
 SYDTFVDYSIDEEAAFQAALALSLEN

**TRTRPLE** - GFP Tag - V



**Restriction Sites:** SgfI-MluI

**Cloning Scheme:**



**ACCN:** NM\_178841

**ORF Size:** 711 bp

**OTI Disclaimer:** The molecular sequence of this clone aligns with the gene accession number as a point of reference only. However, individual transcript sequences of the same gene can differ through naturally occurring variations (e.g. polymorphisms), each with its own valid existence. This clone is substantially in agreement with the reference, but a complete review of all prevailing variants is recommended prior to use. [More info](#)

**OTI Annotation:** This clone was engineered to express the complete ORF with an expression tag. Expression varies depending on the nature of the gene.

**Components:** The ORF clone is ion-exchange column purified and shipped in a 2D barcoded Matrix tube containing 10ug of transfection-ready, dried plasmid DNA (reconstitute with 100 ul of water).

**Reconstitution Method:**

1. Centrifuge at 5,000xg for 5min.
2. Carefully open the tube and add 100ul of sterile water to dissolve the DNA.
3. Close the tube and incubate for 10 minutes at room temperature.
4. Briefly vortex the tube and then do a quick spin (less than 5000xg) to concentrate the liquid at the bottom.
5. Store the suspended plasmid at -20°C. The DNA is stable for at least one year from date of shipping when stored at -20°C.

**RefSeq:** [NM\\_178841.2](#), [NP\\_849163.1](#)

**RefSeq Size:** 1895 bp

**RefSeq ORF:** 714 bp

**Locus ID:** 115992

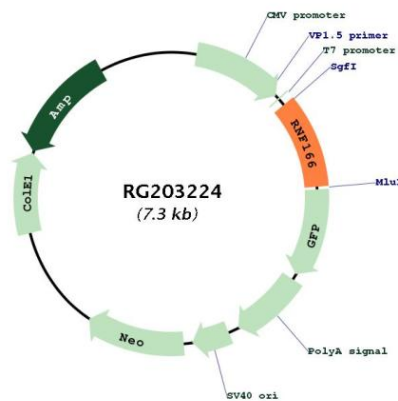
**UniProt ID:** [Q96A37](#)

Cytogenetics: 16q24.2-q24.3

Protein Families: Druggable Genome

Gene Summary: E3 ubiquitin-protein ligase that promotes the ubiquitination of different substrates (PubMed:27880896). In turn, participates in different biological processes including interferon production or autophagy (PubMed:26456228, PubMed:27880896). Plays a role in the activation of RNA virus-induced interferon-beta production by promoting the ubiquitination of TRAF3 and TRAF6 (PubMed:26456228). Plays also a role in the early recruitment of autophagy adapters to bacteria (PubMed:27880896). Mediates 'Lys-29' and 'Lys-33'-linked ubiquitination of SQSTM1 leading to xenophagic targeting of bacteria and inhibition of their replication (PubMed:27880896).[UniProtKB/Swiss-Prot Function]

### Product images:



Circular map for RG203224