

Product datasheet for **RG203214**

SQSTM1 (NM_003900) Human Tagged ORF Clone

Product data:

Product Type:	Expression Plasmids
Product Name:	SQSTM1 (NM_003900) Human Tagged ORF Clone
Tag:	TurboGFP
Symbol:	SQSTM1
Synonyms:	A170; DMRV; FTDALS3; NADGP; OSIL; p60; p62; p62B; PDB3; ZIP3
Mammalian Cell Selection:	Neomycin
Vector:	pCMV6-AC-GFP (PS100010)
E. coli Selection:	Ampicillin (100 ug/mL)
ORF Nucleotide Sequence:	>RG203214 representing NM_003900 Red=Cloning site Blue=ORF Green=Tags(s)

TTTTGTAATACGACTCACTATAGGGCGGCCGGAATTCGTCGACTGGATCCGGTACCGAGGAGATCTGCC
GCC**CGATCGCC**

ATGGCGTCGCTCACCGTGAAGGCCTACCTTCTGGGCAAGGAGGACGCGGCGCGGAGATTCGCCGCTTCA
GCTTCTGCTGCAGCCCCGAGCCTGAGGCGGAAGCCGAGGCTGCGGCGGGTCCGGGACCCTGCGAGCGGCT
GCTGAGCCGGGTGGCCGCCCTGTCCCCGCGTGGCCCTGGCGGCTCCAGGCGCACTACCGCGATGAG
GACGGGGACTTGGTTGCCTTTCCAGTGACGAGGAATTGACAATGGCCATGTCCTACGTGAAGGATGACA
TCTTCCGAATCTACATTAAGAGAAAAAGAGTGCCGGCGGGACCACCGCCACCGTGTGCTCAGGAGGC
GCCCGCAACATGGTGCACCCCAATGTGATCTGCGATGGCTGCAATGGGCTGTGGTAGGAACCCGCTAC
AAGTGCAGCGTCTGCCAGACTACGACTTGTGTAGCGTCTGCGAGGAAAAGGGCTTGACCCGGGGCACA
CCAAGCTCGCATTCCCCAGCCCCCTCGGGCACCTGTCTGAGGGCTTCTCGCACAGCCGCTGGCTCCGGAA
GGTGAACACGGACACTTCGGGTGGCCAGGATGGGAAATGGGTCCACCAGGAAACTGGAGCCACGTCCT
CCTCGTGCAGGGGAGGCCCGCCCTGGCCCCACGGCAGAATCAGCTTCTGGTCCATCGGAGGATCCGAGTG
TGAATTTCTGAAGAACGTTGGGGAGAGTGTGGCAGCTGCCCTTAGCCCTCTGGGCATTGAAGTTGATAT
CGATGTGGAGCACGGAGGGAAAAGAAGCCGCTGACCCCGTCTCTCCAGAGAGTTCAGCACAGAGGAG
AAGAGCAGCTCACAGCCAAGCAGCTGCTGCTGATCCCAGCAAGCCGGTGGGAATGTTGAGGGCGCCA
CGCAGTCTTGGCGGAGCAGATGAGAAAGATCGCCTTGGAGTCCGAGGGCGCCCTGAGGAACAGATGGA
GTCGGATAAAGTTCAGGAGGAGATGATGACTGGACCCATCTGTCTTCAAAGAAGTGGACCCGCTTACA
GGTGAAGTCCAGTCCCTACAGATGCCAGAATCCGAAGGGCCAAGCTCTCTGGACCCTCCAGGAGGGAC
CCACAGGGCTGAAGGAAGCTGCCTTGTACCCACATCTCCCGCCAGAGGCTGACCCGCGGCTGATTGAGTC
CCTCTCCAGATGCTGTCCATGGCTTCTCTGATGAAGGCGGCTGGCTACCAGGCTCCTGCAGACCAAG
AACTATGACATCGGAGCGGCTCTGGACACCATCCAGTATTCAAAGCATCCCCCGCGTTG

ACGCGTACGCGGCCGCTCGAG - GFP Tag - GTTTAA



[View online >](#)

Protein Sequence: >RG203214 representing NM_003900
Red=Cloning site Green=Tags(s)

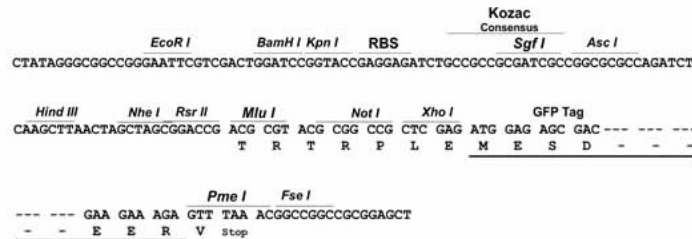
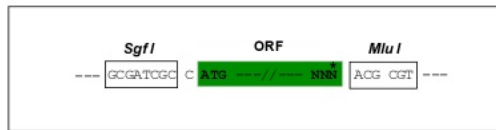
MASLTVKAYLLGKEDAAREIRRFSCCSPEPEAEAEAAAGPGPCERLLSRVAALFPALRPGGFQAHYRDE
 DGDLVAFSSDEELTMAMSYVKDDIFRIYIKEKKECRRDHRPPCAQEAPRNMVHPNVICDGCNGPVVTRY
 KCSVCPDYDLCSVCEGKGLHRGHTKLAFSPFGHLSEGFSHSRWLKVKHGHFGWPGWEMGPPGNWSPRP
 PRAGEARPGPTAESASGPPSEDPVNFKNVGESVAAAL SPLGIEVDIDVEHGGKRSRLTPVSPESSSTEE
 KSSSQPSSCCSDPSKPGGNVEGATQSLAEQMRKIALESEGRPEEQMESDNCSGGDDDWTHLSSKEVDPST
 GELQSLQMPSESGPSSLDPSQEGPTGLKEAALYPHLPPEADPRLIESLSQMLSMGFSDEGGWLTRLLQTK
 NYDIGAALDTIQYSKHPPL

TRTRPLE – GFP Tag – V

Restriction Sites: SgfI-MluI

Cloning Scheme:

Cloning sites used for ORF Shuttling:



ACCN: NM_003900

ORF Size: 1320 bp

OTI Disclaimer: The molecular sequence of this clone aligns with the gene accession number as a point of reference only. However, individual transcript sequences of the same gene can differ through naturally occurring variations (e.g. polymorphisms), each with its own valid existence. This clone is substantially in agreement with the reference, but a complete review of all prevailing variants is recommended prior to use. [More info](#)

OTI Annotation: This clone was engineered to express the complete ORF with an expression tag. Expression varies depending on the nature of the gene.

Components: The ORF clone is ion-exchange column purified and shipped in a 2D barcoded Matrix tube containing 10ug of transfection-ready, dried plasmid DNA (reconstitute with 100 ul of water).

Reconstitution Method:

1. Centrifuge at 5,000xg for 5min.
2. Carefully open the tube and add 100ul of sterile water to dissolve the DNA.
3. Close the tube and incubate for 10 minutes at room temperature.
4. Briefly vortex the tube and then do a quick spin (less than 5000xg) to concentrate the liquid at the bottom.
5. Store the suspended plasmid at -20°C. The DNA is stable for at least one year from date of shipping when stored at -20°C.

RefSeq: [NM_003900.2](#)

RefSeq Size: 2868 bp

RefSeq ORF: 1323 bp

Locus ID: 8878

UniProt ID: [Q13501](#)

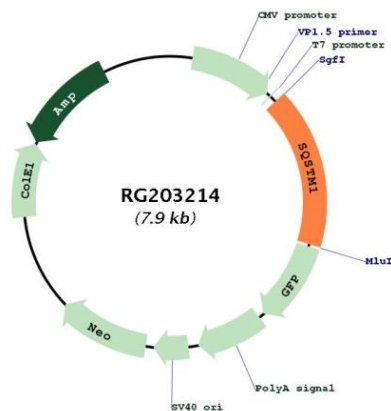
Cytogenetics: 5q35.3

Domains: PB1, ZnF_ZZ, UBA

Protein Families: Druggable Genome, Transcription Factors

Gene Summary: This gene encodes a multifunctional protein that binds ubiquitin and regulates activation of the nuclear factor kappa-B (NF-κB) signaling pathway. The protein functions as a scaffolding/adaptor protein in concert with TNF receptor-associated factor 6 to mediate activation of NF-κB in response to upstream signals. Alternatively spliced transcript variants encoding either the same or different isoforms have been identified for this gene. Mutations in this gene result in sporadic and familial Paget disease of bone. [provided by RefSeq, Mar 2009]

Product images:



Circular map for RG203214