

## Product datasheet for **RG203202**

### EEF1D (NM\_001960) Human Tagged ORF Clone

#### Product data:

Product Type:	Expression Plasmids
Product Name:	EEF1D (NM_001960) Human Tagged ORF Clone
Tag:	TurboGFP
Symbol:	EEF1D
Synonyms:	EF-1D; EF1D; FP1047
Mammalian Cell Selection:	Neomycin
Vector:	pCMV6-AC-GFP (PS100010)
E. coli Selection:	Ampicillin (100 ug/mL)



[View online »](#)

**ORF Nucleotide Sequence:**

>RG203202 representing NM\_001960  
 Red=Cloning site Blue=ORF Green=Tags(s)

TTTTGTAATACGACTCACTATAGGGCGGCCGGGAATTCGTCGACTGGATCCGGTACCGAGGAGATCTGCC  
 GCC**CGGATCGCC**

ATGAGGAGCGGGAAGGCCTCCTGCACCCTGGAGACCGTGTGGAAGACAAGCACAAGTATGAGGAGGCC  
 AGCGGCGCTTCTACGAACACGAGGCCACACAGGCGGCCGCTCCGCCAGCAGCTGCCAGCCGAGGGGCC  
 AGCCATGAATGGGCCCGCCAGGACGACCTGAGGACGCTGATGAGGCGGAAGCCCTGACGGCGGACG  
 AGGCGTGATCCCAGGAAGAGCCAGGACAGCAGGAAGCCCTGCAGAAAAAGAGGAAGCGCTCCCCAAGA  
 GCGGGCTCGGCCCGGACCTGGCCCTCTGGCCTCTCGGCCGAACGTGTGTGGCTGGACAAGTCACT  
 TTTGACCAGGCAGAGAGCTCTACGCCAGAAGCTGGCAGATGTGGCTGCCAGGCAGCCTGGCCTCT  
 GCCTTGGCCCTTGGGGTCTCTGCACCCATGGAACCAGGTGGCCTGCCACCACGTGACCTGGGGATCT  
 GGGTCAACAAGTCTCTTCGACCAGGCTGAGCGGGCTTCGTGGAGTGGTCTCAGGCCCTGTTGCTGGC  
 CCCGAGGGCAGCCGAGGAGGGACTCCCAACACAGGCCAGCAGGTGGCCGCTCCCGACTGGCCAC  
 CAGCCCAGCCACCGGTCAATGGCCAGCCCCGCTGGGCAGCCTGCAGGCACTGGTTCGGGAGGTGTGGC  
 TGGAGAAGCCCCGTATGATGCAGCCGAGAGGGGCTTCTACGAGGCCCTGTTTGACGGCCATCCCCAGG  
 GAAGGTGCCTGCAAGAGCGAGCCGGCCTGGCCGAGGGTGCCTGGCGGGGCCGAGAGACCGCGGGGC  
 CGCAACATCTTAGGGAACAAGCGGGCCGGCTGCGACGGGCCGATGGGGAGGCCCTCTGCCTTGCCT  
 ACTGTTACTTCTGCAGAAGGATGCAGAGGCCCTGGCTCAGCAAGCTGCCTACGACAGCGCCGAGTG  
 CCGCCACCACGCTGCCGAGGCCCTGCGTGTGGCCTGGTGCCTCGAAGTGCCTCCCTGTCTACCGACCC  
 GGTCTCGGTCTGGCCTGCTCCGTGTCCAGCCTGAGACCAACAGAAAAATGGCTACAAACTTCTAGCAC  
 ATGAGAAGATCTGGTTCGACAAGTTCAAATATGACGACGCAGAAAGGAGATTCTACGAGCAGATGAACGG  
 GCCTGTGGCAGGTGCCTCCCGCCAGGAGAACGGCGCCAGCGTGATCCTCGGTGACATTGCGAGAGCCAGA  
 GAGAACATCCAGAAATCCCTGGCTGGAAGCTCAGGCCCGGGGCTCCAGCGGCACCAGCGGAGACCAG  
 GTGAGCTCGTCCGGATTGCCAGTCTGGAAGTGGAGAACCAGAGTCTGCGTGGCGTGGTACAGGAGCT  
 GCAGCAGGCCATCTCAAGCTGGAGGCCGGCTGAACGTGCTGGAGAAGAGCTCGCTGGCCACCGGGCC  
 ACGGCCCCACAGACCAGCAGTATCTCCATGCGCCAAGTGGAGCCCCAGCCAAGAAGCCAGCCACAC  
 CAGCAGAGGATGACGAGGATGATGACATTGACCTGTTTGGCAGTGACAATGAGGAGGAGGACAAGGAGGC  
 GGCACAGCTGCGGAGGAGCGGCTACGGCAGTACGCGGAGAAGAAGGCCAAGAAGCTGCACTGGTGGCC  
 AAGTCTCCATCCTGCTGGATGTCAAGCCTTGGGATGATGAGACGGACATGGCCAGCTGGAGGCCTGTG  
 TGCCTCTATCCAGCTGGACGGGCTGGTCTGGGGGCTTCCAAGCTGGTGCCTGGGCTACGGTATCCG  
 GAAGCTACAGATTCAAGTGTGGTGGAGGACGACAAGGTGGGGACAGACTTGTGGAGGAGGAGATCACC  
 AAGTTTGGAGGACAGTGCAGAGTGTGCATATCGCAGCTTTCAACAAGATC

**ACGCGT**ACGCGGCCGCTCGAG - GFP Tag - GTTTAA

**Protein Sequence:**

>RG203202 representing NM\_001960  
 Red=Cloning site Green=Tags(s)

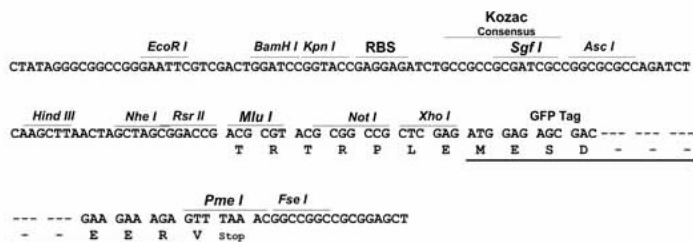
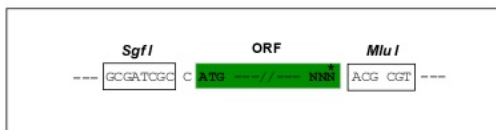
MRSKGASCTLETVWEDKHKYEAEERRFYEHEATQAAASAQQLPAEGPAMNGPGQDDPEDADEAEAPDGGG  
 RRDPRKSQDSRKPLQKKRKRSPKSLGPADLALLGLSAERVWLDKSLFDQAESSYRQKLADVAAQAAWPP  
 ALAPWGLCTHGNQVACHHVTWGIWVNSQDFQAERAFVEVSAQALLLAPEGSRRQGTPTNTGQQVAVPDLAH  
 QPSPVNGQPPLGSLQALVREVLKPRYDAAERGFYEALFDGHPGKVRQLQERAGLAEGARRRRDRRG  
 RNILGNKRAGLRRADGEAPSALPYCYFLQKDAEAPWLSKPAYDSACRHHAAEALRVAWCLEAASLSHRP  
 GPRSGLSVSSLRPNRKMATNFLAHEKIFWDFKYDDAERRFYEQMNGPVAGASRQENGASVILRDIARAR  
 ENIQKSLAGSSGPGASSGTSGDHGELVVRIASLEVENQSLRGVVQELQQAI SKLEARLNVLKSSPGHRA  
 TAPQTQHVSPMRQVEPPAKPATPAEDDEDDIDLFGSDNEEDKEAAQLREERLRQYAEKKAKKALVA  
 KSSILLDVKPWDETDMAQLEACVRSIQLDGLVWGASKLVPVGYGIRKLQIQCVVEDDKVGTDLLEEIIT  
 KFEHVQSVDIAAFNKI

**TRTRPLE** - GFP Tag - V

Restriction Sites: SgfI-MluI

Cloning Scheme:

Cloning sites used for ORF Shutting:



ACCN: NM\_001960

ORF Size: 1941 bp

OTI Disclaimer: The molecular sequence of this clone aligns with the gene accession number as a point of reference only. However, individual transcript sequences of the same gene can differ through naturally occurring variations (e.g. polymorphisms), each with its own valid existence. This clone is substantially in agreement with the reference, but a complete review of all prevailing variants is recommended prior to use. [More info](#)

OTI Annotation: This clone was engineered to express the complete ORF with an expression tag. Expression varies depending on the nature of the gene.

Components: The ORF clone is ion-exchange column purified and shipped in a 2D barcoded Matrix tube containing 10ug of transfection-ready, dried plasmid DNA (reconstitute with 100 ul of water).

Reconstitution Method:

1. Centrifuge at 5,000xg for 5min.
2. Carefully open the tube and add 100ul of sterile water to dissolve the DNA.
3. Close the tube and incubate for 10 minutes at room temperature.
4. Briefly vortex the tube and then do a quick spin (less than 5000xg) to concentrate the liquid at the bottom.
5. Store the suspended plasmid at -20°C. The DNA is stable for at least one year from date of shipping when stored at -20°C.

RefSeq: [NM\\_001960.2](#), [NP\\_001951.2](#)

RefSeq Size: 994 bp

RefSeq ORF: 846 bp

Locus ID: 1936

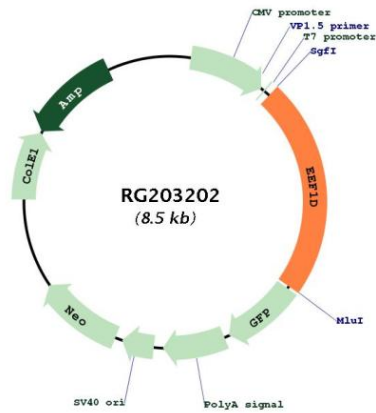
UniProt ID: [P29692](#)

Cytogenetics: 8q24.3

Domains: EF1BD

**Gene Summary:** This gene encodes a subunit of the elongation factor-1 complex, which is responsible for the enzymatic delivery of aminoacyl tRNAs to the ribosome. This subunit, delta, functions as guanine nucleotide exchange factor. It is reported that following HIV-1 infection, this subunit interacts with HIV-1 Tat. This interaction results in repression of translation of host cell proteins and enhanced translation of viral proteins. Several alternatively spliced transcript variants encoding multiple isoforms have been found for this gene. Related pseudogenes have been defined on chromosomes 1, 6, 7, 9, 11, 13, 17, 19.[provided by RefSeq, Aug 2010]

## Product images:



Circular map for RG203202