

Product datasheet for **RG203195**

STK40 (NM_032017) Human Tagged ORF Clone

Product data:

Product Type:	Expression Plasmids
Product Name:	STK40 (NM_032017) Human Tagged ORF Clone
Tag:	TurboGFP
Symbol:	STK40
Synonyms:	SgK495; SHIK
Mammalian Cell Selection:	Neomycin
Vector:	pCMV6-AC-GFP (PS100010)
E. coli Selection:	Ampicillin (100 ug/mL)
ORF Nucleotide Sequence:	>RG203195 representing NM_032017 Red=Cloning site Blue=ORF Green=Tags(s)

TTTTGTAATACGACTCACTATAGGGCGGCCGGAATTCGTCGACTGGATCCGGTACCGAGGAGATCTGCC
GCC**CGATCGCC**

ATGAAGCGGAGAGCATCAGACAGAGGAGCTGGGAAACGTCGGCCAGGGCCAAGGCTCTAGGAAGTGGGA
TTTCTGGAATAATGCAAAGAGAGCTGGACCATTCATCCTTGGTCCCGTCTGGGCAACTCACCGGTGCC
AAGCATAGTGCAGTGTGGCGAGGAAAGATGGCAGGATGACTTCTATCAGCTGAAGATCTGACCCTG
GAGGAGAGGGGGACCAAGGCATAGAGAGCCAGGAAGAGCGGCAGGGCAAGATGCTGCTGCACACCGAGT
ACTCACTGCTGTCTCCTGCACACGCAGGATGGCGTGGTGCACCACCACGGCCTCTCCAGGACCGCAC
CTGTGAAATCGTTGAGGACACAGAATCCAGCCGATGGTTAAGAAGATGAAGAAGCGCATCTGCCTCGTC
CTGGACTGCCTCTGTGCTCATGACTTCAGCGATAAGACCGCTGACCTCATCAACCTGCAGCACTACGTCA
TCAAGGAGAAGAGGCTCAGCGAGAGGGAGACTGTGGTAATCTTCTACGACGTGGTCCGCGTGGTGGAGGC
CCTGCACCAGAAAAATATCGTGCACAGAGACCTGAAGCTGGGGAACATGGTGCTCAACAAGAGGACACAT
CGGATAACCATCACCAACTTCTGCCTCGGGAAGCATCTGGTGAGCGAGGGGGACCTGCTGAAGGACCAGA
GAGGGAGCCCTGCCTACATCAGTCCCGACGTGCTCAGCGCCGGCCGTACCGTGGCAAGCCAGTGACAT
GTGGCCCTGGGCGTGGTGTCTTACCATGCTGTATGGCCAGTCCCTTCTACGACAGCATCCCGCAG
GAGCTCTCCGCAAGATCAAGGCTGCCGAGTATACCATTCTGAGGATGGACGGGTTTCTGAGAACCACCG
TGTGTCTATCCGGAAGCTGCTGGTCTTGACCCAGCAGCGCCTGGCCGCGCCGACGTCTGGAGGC
CCTCAGTGCCATCATTGCATCATGGCAGTCCCTGTCTCTGAGTGGGCCTTTGCAAGTGGTTCCTGAC
ATTGATGACCAAATGAGCAATGCGGATAGCTCCCAGGAGGCGAAGGTGACGGAGGAGTGCTCCCAGTACG
AGTTTGAGAACTACATGCGTCAGCAGCTGCTGCTGGCCGAGGAGAAGAGCTCCATCCATGACGCCCGGAG
CTGGGTACCCAAGCGCAGTTCGGCAGCGCACCCGGTGCAGCGCTGGGCCACGACGCACAGCCCATG
ACCTCCTTGGACACGGCCATCCTGGCGCAGCGCTACCTGCGGAAA

ACGCGTACGCGGCCGCTCGAG - GFP Tag - GTTTAA



[View online »](#)

Protein Sequence: >RG203195 representing NM_032017
Red=Cloning site Green=Tags(s)

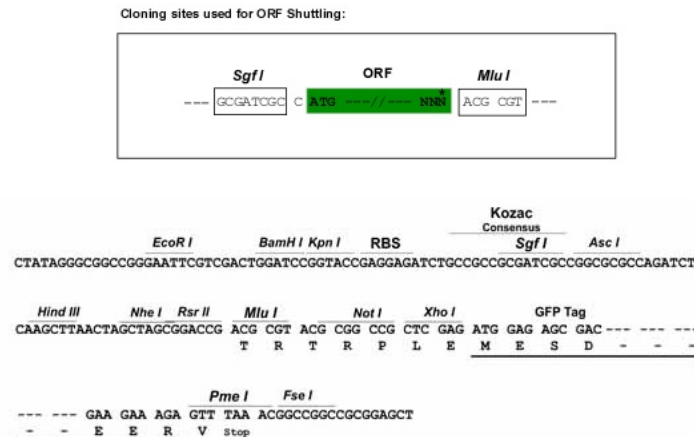
MKRRASDRGAGETSARAKALGSGISGNNAKRAGPFILGPRLGNSPVPVSIQCLARKDGTDDFYQLKILTL
 EERGDQGIESQEERQGMILLHTEYSLLSLLHTQDGVVHHHGLFQDRTCEIVEDTESSRMVKKMKRCLV
 LDCLCAHDFSDKTADLINLQHYYIKEKRLSERETVVIFYDVVRVVEALHQKNIVHRDLKLGNMVLNKRTH
 RITITNFCLGKHLVSEGDLKLDQQRGSPAYISPDVLSGRPYRGKPSDMWALGVVLF TMLYQGPFYDSIPQ
 ELFRKIKAAEYTIPE DGRVSENTVCLIRKLLVLDPQQLAAADVLEALSIIASWQSLSSLSGPLQVVPD
 IDDQMSNADSSQEAKVTEECSQYEFENYMRQQLLLAEKSSIHDARSWVPKRQFGSAPPVRRLLGHDAQPM
 TSLDTAILAQRYLK

TRTRPLE - GFP Tag - V

Restriction Sites:

SgfI-MluI

Cloning Scheme:



ACCN: NM_032017

ORF Size: 1305 bp

OTI Disclaimer: The molecular sequence of this clone aligns with the gene accession number as a point of reference only. However, individual transcript sequences of the same gene can differ through naturally occurring variations (e.g. polymorphisms), each with its own valid existence. This clone is substantially in agreement with the reference, but a complete review of all prevailing variants is recommended prior to use. [More info](#)

OTI Annotation: This clone was engineered to express the complete ORF with an expression tag. Expression varies depending on the nature of the gene.

Components: The ORF clone is ion-exchange column purified and shipped in a 2D barcoded Matrix tube containing 10ug of transfection-ready, dried plasmid DNA (reconstitute with 100 ul of water).

Reconstitution Method:

1. Centrifuge at 5,000xg for 5min.
2. Carefully open the tube and add 100ul of sterile water to dissolve the DNA.
3. Close the tube and incubate for 10 minutes at room temperature.
4. Briefly vortex the tube and then do a quick spin (less than 5000xg) to concentrate the liquid at the bottom.
5. Store the suspended plasmid at -20°C. The DNA is stable for at least one year from date of shipping when stored at -20°C.

RefSeq: [NM_032017.3](#)

RefSeq Size: 3863 bp

RefSeq ORF: 1308 bp

Locus ID: 83931

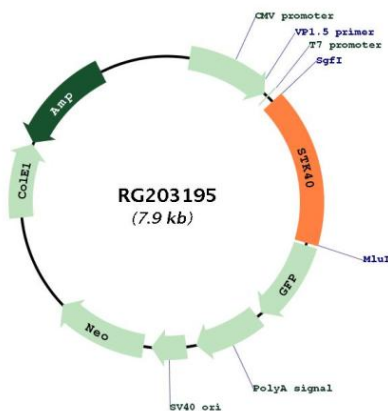
UniProt ID: [Q8N2I9](#)

Cytogenetics: 1p34.3

Protein Families: Druggable Genome, Protein Kinase

Gene Summary: May be a negative regulator of NF-kappa-B and p53-mediated gene transcription.
[UniProtKB/Swiss-Prot Function]

Product images:



Circular map for RG203195