

Product datasheet for **RG203175**

GAP43 (NM_002045) Human Tagged ORF Clone

Product data:

Product Type:	Expression Plasmids
Product Name:	GAP43 (NM_002045) Human Tagged ORF Clone
Tag:	TurboGFP
Symbol:	GAP43
Synonyms:	B-50; GAP-43; PP46
Mammalian Cell Selection:	Neomycin
Vector:	pCMV6-AC-GFP (PS100010)
E. coli Selection:	Ampicillin (100 ug/mL)
ORF Nucleotide Sequence:	>RG203175 representing NM_002045 Red=Cloning site Blue=ORF Green=Tags(s)

TTTTGTAATACGACTCACTATAGGGCGGCCGGAATTCGTCGACTGGATCCGGTACCGAGGAGATCTGCC
GCC**CGATCGCC**

ATGCTGTGCTGTATGAGAAGAACCAAACAGGTTGAAAAAATGATGACGACCAAAGATTGAACAAGATG
GTATCAAACCAGAAGATAAAGCTCATAAGGCCGCAACCAAATTCAGGCTAGCTTCCGTGGACACATAAC
AAGGAAAAGCTCAAAGGAGAGAAGAAGGATGATGTCCAAGCTGCTGAGGCTGAAGCTAATAAGAAGGAT
GAAGCCCCTGTTGCCGATGGGGTGGAGAAGAAGGAGAAGGCACCACTACTGCCGAAGCAGCCCCAGCCA
CTGGCTCCAAGCCTGATGAGCCCGCAAAGCAGGAGAACTCCTTCCGAGGAGAAGAAGGGGAGGGTGA
TGCTGCCACAGAGCAGGCAGCCCCCAGGCTCCTGCATCCTCAGAGGAGAAGGCCGGCTCAGCTGAGACA
GAAAGTGCCACTAAAGCTTCCACTGATAACTCGCCGTCCTCCAAGGCTGAAGATGCCCCAGCCAAGGAGG
AGCCTAAACAAGCCGATGTGCCTGCTGCTGCTCACTGCTGCTGCCACCACCCCTGCCGAGAGGATGC
TGCTGCCAAGGCAACAGCCAGCCTCCAACGGAGACTGGGGAGAGCAGCCAAGCTGAAGAGAACATAGAA
GCTGTAGATGAAACCAACCTAAGGAAAGTGCCCGGCAGGACGAGGGTAAAGAAGAGGAACCTGAGGCTG
ACCAAGAACATGCC

ACGCGTACGCGGCCGCTCGAG - GFP Tag - GTTTAA



[View online »](#)

Protein Sequence: >RG203175 representing NM_002045
 Red=Cloning site Green=Tags(s)

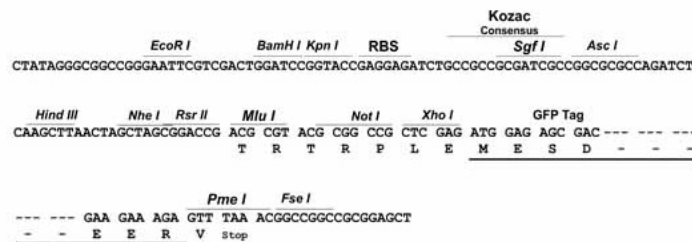
MLCCMRRTKQVEKNDQKIEQDGIKPEDKAHKAATKIQASFRGHITRKKLKGEKKDDVQAAEAEANKKD
 EAPVADGVEKKGEGTTTAEAAPATGSKPDEPGKAGETPSEEKKGEGDAATEQAAPQAPASSEKAGSAET
 ESATKASTDNSSKAEDAPAKEEPKQADVPAAVTAAAAATTPAEDAAAKATAQPPTETGESSQAEENIE
 AVDETKPKESARQDEGKEEEPEADQEHA

TRTRPLE – GFP Tag – V

Restriction Sites: SgfI-MluI

Cloning Scheme:

Cloning sites used for ORF Shuttling:



ACCN: NM_002045

ORF Size: 714 bp

OTI Disclaimer: The molecular sequence of this clone aligns with the gene accession number as a point of reference only. However, individual transcript sequences of the same gene can differ through naturally occurring variations (e.g. polymorphisms), each with its own valid existence. This clone is substantially in agreement with the reference, but a complete review of all prevailing variants is recommended prior to use. [More info](#)

OTI Annotation: This clone was engineered to express the complete ORF with an expression tag. Expression varies depending on the nature of the gene.

Components: The ORF clone is ion-exchange column purified and shipped in a 2D barcoded Matrix tube containing 10ug of transfection-ready, dried plasmid DNA (reconstitute with 100 ul of water).

Reconstitution Method:

1. Centrifuge at 5,000xg for 5min.
2. Carefully open the tube and add 100ul of sterile water to dissolve the DNA.
3. Close the tube and incubate for 10 minutes at room temperature.
4. Briefly vortex the tube and then do a quick spin (less than 5000xg) to concentrate the liquid at the bottom.
5. Store the suspended plasmid at -20°C. The DNA is stable for at least one year from date of shipping when stored at -20°C.

RefSeq: [NM_002045.4](#)

RefSeq Size: 1225 bp

RefSeq ORF: 717 bp

Locus ID: 2596

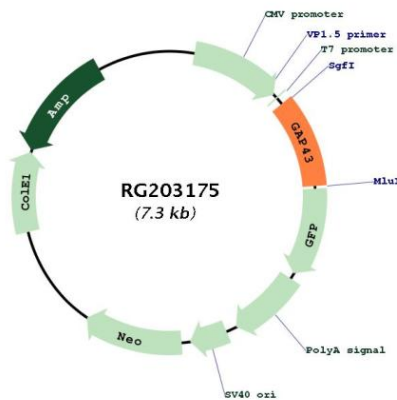
UniProt ID: [P17677](#)

Cytogenetics: 3q13.31

Domains: IQ

Gene Summary: The protein encoded by this gene has been termed a 'growth' or 'plasticity' protein because it is expressed at high levels in neuronal growth cones during development and axonal regeneration. This protein is considered a crucial component of an effective regenerative response in the nervous system. Alternatively spliced transcript variants encoding distinct isoforms have been found for this gene. [provided by RefSeq, Jul 2008]

Product images:



Circular map for RG203175