

Product datasheet for **RG203164**

SCLY (NM_016510) Human Tagged ORF Clone

Product data:

Product Type:	Expression Plasmids
Product Name:	SCLY (NM_016510) Human Tagged ORF Clone
Tag:	TurboGFP
Symbol:	SCLY
Synonyms:	hSCL; SCL
Mammalian Cell Selection:	Neomycin
Vector:	pCMV6-AC-GFP (PS100010)
E. coli Selection:	Ampicillin (100 ug/mL)



[View online »](#)

ORF Nucleotide Sequence:

>RG203164 representing NM_016510
 Red=Cloning site Blue=ORF Green=Tags(s)

TTTTGTAATACGACTCACTATAGGGCGGCCGGGAATTCGTCGACTGGATCCGGTACCGAGGAGATCTGCC
 GCC**GCGATCGCC**

ATGGAGGCGGCCGTGGCCCGGGGAGGGATGCGCCGGCACCCCGCGCGAGTCAGCCAGCGGCTGCGGGA
 AACACAACCTCGCCGAGAGGAAAAGTTTATATGGACTATAATGCAACGACTCCCCTGGAGCCAGAAGTTAT
 CCAGGCCATGACCAAGGCCATGTGGGAAGCCTGGGAAAATCCCAGCAGCCCGTATTCAGCAGGAAGAAAG
 GCCAAGGATATTATAATGCAGCTCGGGAAGCCTCGGAAGATGATAGGGGGAAAACCTCAAGATATAA
 TCTTCACTCCGGGGGACTGAGTCAAATAATTTAGTAATCCATTCTGTGGTGAACATTTCCACGCAAA
 CCAGACCTCAAAGGGACACACAGGTGGCACCACAGCCAGTGAAGGGGGCAAGCCCCATTTCACTACT
 TCCTCGGTGGAACAGACTCCATCCGGTGCCTCGGAGCACCTGGTGAAGAACAAGTGGCAGCGGTCA
 CCTTTGTCCCGGTGCCAAGGTGAGCGGGCAGACAGAGGTGGACGACATCCTCGCGGCAGTCCGCCCGAC
 CACACGCCTCGTACCATCATGTGGCCAACAATGAGACTGGCATTGTCATGCCTGTCCCTGAAATCAGT
 CAGCGCATTAAAGCCCTGAACCAGGAACGGGTGGCAGCTGGGCTACCTCCCATCCTCGTGCACACGGATG
 CTGCACAGGCCTTGGGAAGCAGCGCGTGGATGTGGAGGACCTGGGCGTGGACTTCTTACAATCGTGGG
 GCACAAGTTTTATGGTCCAGGATTGGCGCACTTTATATACGAGGACTTGGTGAATTTACCCCTCTCTAC
 CCTATGCTATTTGGAGGTGGACAAGAACGGAAATTCAGGCCAGGGACAGAGAACACCCCAATGATTGCTG
 GCCTTGGGAAGGCCCGGAGCTGGTGACCCAGAAGTGGAGGCTTATGAGGCCACATGAGGGACGTCGG
 CGACTACCTGGAAGAGAGGCTGGAAGCTGAATTCGGTCAAGAGAATCCATCTGAATAGCCAGTTTCCA
 GGCACCCAGCGGCTTCCAATACCTGTAACCTTTCCATCCGGGGACCCCGGCTTCAAGGCCACGTGGTGC
 TTGCGCAGTGGCAGTGTGATGGCCAGTGTGGGGCGCGTGCCACTCGGACCACGGGGACCAGCCGTC
 CCCAGTGTGCTGAGCTACGGTGTCCCTTCGAGGTGGCCAGGAACGCGCTCCGGCTCAGCGTGGGCCGC
 AGCACCACCAGGCCGAGGTGGACCTCGTGTGACGACCTGAAGCAGGCCGTGGCGCAGCTGGAGGACC
 AGGCC

ACGCGTACGCGGCCGCTCGAG - GFP Tag - GTTTAA

Protein Sequence:

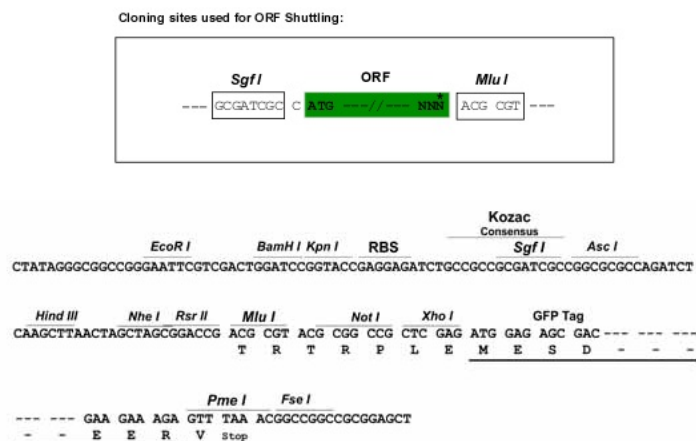
>RG203164 representing NM_016510
 Red=Cloning site Green=Tags(s)

MEAAVAPGRDAPAPAASQPSGCGKHNSPERKVYMDYNATTPLEPEVIQAMTKAMWEAWGNPSSPYSAGRK
 AKDIINAARESLAKMIGGKPDIIFTSGGTESNNLVIHSVVKHFHANQTSKGHTGGHSPVKGAKPHFIT
 SSVEHDSIRLPLEHLVEEQVAAVTFVPVSKVSGQTEVDDILAAVRPTTRLVTIMLANNETGIVMPVPEIS
 QRIKALNQERVAAGLPPILVHTDAAQALGKQRVDVEDLGVDFLTIVGHKFGPRIGALYIRGLGEFTPLY
 PMLFGGQERNFRPGTENTPMIAGLGKAAELVTQNCAYEAHMRDVRDYLEERLEAEFGQKRIHLNSQFP
 GTQRLPNTCNFSIRGPRLQGHVLAQCRVLMASVGAACHSDHGDQPSPVLLSYGVPPFDVARNALRLSVGR
 STTRAEVDLVVQDLKQAVAQLEDQA

TRTRPLE - GFP Tag - V

Restriction Sites:

Sgfl-MluI

Cloning Scheme:


ACCN: NM_016510

ORF Size: 1335 bp

OTI Disclaimer: The molecular sequence of this clone aligns with the gene accession number as a point of reference only. However, individual transcript sequences of the same gene can differ through naturally occurring variations (e.g. polymorphisms), each with its own valid existence. This clone is substantially in agreement with the reference, but a complete review of all prevailing variants is recommended prior to use. [More info](#)

OTI Annotation: This clone was engineered to express the complete ORF with an expression tag. Expression varies depending on the nature of the gene.

Components: The ORF clone is ion-exchange column purified and shipped in a 2D barcoded Matrix tube containing 10ug of transfection-ready, dried plasmid DNA (reconstitute with 100 ul of water).

Reconstitution Method:

1. Centrifuge at 5,000xg for 5min.
2. Carefully open the tube and add 100ul of sterile water to dissolve the DNA.
3. Close the tube and incubate for 10 minutes at room temperature.
4. Briefly vortex the tube and then do a quick spin (less than 5000xg) to concentrate the liquid at the bottom.
5. Store the suspended plasmid at -20°C. The DNA is stable for at least one year from date of shipping when stored at -20°C.

RefSeq: [NM_016510.3](#), [NP_057594.2](#)

RefSeq Size: 2496 bp

RefSeq ORF: 1338 bp

Locus ID: 51540

UniProt ID: [Q96L15](#)

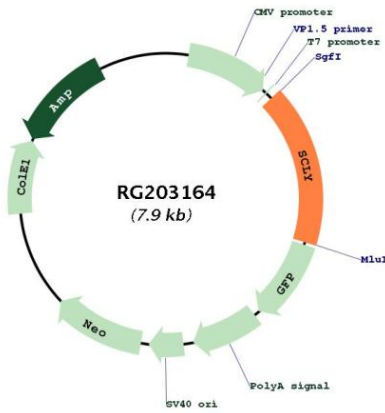
Cytogenetics: 2q37.3

Domains: aminotran_5

Protein Pathways: Metabolic pathways, Selenoamino acid metabolism

Gene Summary: Selenocysteine lyase (SCLY; EC 4.4.1.16) catalyzes the pyridoxal 5-prime phosphate-dependent conversion of L-selenocysteine to L-alanine and elemental selenium (Mihara et al., 2000 [PubMed 10692412]).[supplied by OMIM, Mar 2008]

Product images:



Circular map for RG203164