

Product datasheet for **RG203156**

BBOX1 (NM_003986) Human Tagged ORF Clone

Product data:

| | |
|---------------------------|---|
| Product Type: | Expression Plasmids |
| Product Name: | BBOX1 (NM_003986) Human Tagged ORF Clone |
| Tag: | TurboGFP |
| Symbol: | BBOX1 |
| Synonyms: | BBH; BBOX; G-BBH; gamma-BBH |
| Mammalian Cell Selection: | Neomycin |
| Vector: | pCMV6-AC-GFP (PS100010) |
| E. coli Selection: | Ampicillin (100 ug/mL) |
| ORF Nucleotide Sequence: | >RG203156 representing NM_003986 Red=Cloning site Blue=ORF Green=Tags(s) |

TTTTGTAATACGACTCACTATAGGGCGGCCGGAATTCGTCGACTGGATCCGGTACCGAGGAGATCTGCC
GCC**CGATCGCC**

ATGGCTTGTACCATCCAAAAGGCAGAAGCACTTGACGGGGCTCATTTGATGCAGATCCTCTGGTATGATG
AGGAAGAGTCTCTACCCAGCTGTATGGTTGAGAGACAAGTGTCCGTGCTCTGATTGCTACCTGGATTC
TGCAAAGCACGGAACTTCTAGTGAAGCTCTTGATGTGAACATTGGAATTAAGGCTTGATATTTGAC
AGAAAAAGGTGTACATCACATGGCCCGATGAGCATTACAGTGAATCCAGGCTGATTGGCTGAAGAAAA
GATGCTTTTCCAAGCAGGCCAGACAAAGCTCCAAAGAGAATTGTTTTTCCAGAATGCCAATACTGGGG
CTCAGAGCTCCAGCTACCCACTTTGGATTTTGAAGATGTTTTAAGATATGATGAACATGCATACAAGTGG
CTCTCCACCCTCAAGAAAGTAGGCATAGTAAGACTCACCGGAGCATCTGACAAACCAGGAGAAGTTTCAA
AACTTGGGAAAAGGATGGGTTTCTCTATCTCACATTTTATGGACATACTTGGCAAGTGCAAGACAAAAT
CGATGCAAACAATGTGGCTTACACAAGTGGGAAGCTAAGCTTTCACACTGATTATCCAGCCCTCCATCAT
CCACCTGGGGTTCAGCTTCTCACTGCATAAAGCAAACAGTCACAGGGGGTGATTGAGAAATTTAGATG
GGTTTAAATGTGTGCCAAAAACTAAAGAAAAATAATCCTCAGGCATTCCAGATTTTGTCTCTACCTTTGT
GGACTTTACAGACATTGGAGTGGATTACTGTGATTTTTCTGTACAATCAAACATAAAAATATAGAGTTA
GATGATAAAGGCCAAGTGGTTCGCATCACTTCAATAACGCAACTAGGGACACAATATTTGATGTACCTG
TTGAAAGAGTTTCAGCCTTTTTATGCTGCTCTGAAGGAGTTTGTGACCTCATGAACAGCAAAGAATCCAA
GTTTACCTTCAAGATGAATCCAGGTGATGTGATTACTTTTGATAACTGGCGCTTACTTCATGGCCGACGT
AGCTATGAAGCAGGAAGTGAATATCCCGCATCTAGAAGGAGCTTATGCTGACTGGGATGTGGTCATGT
CAAGGCTTCGTATCTTAAGGCAGAGGGTGGAGAATGAAAC

ACGCGTACGCGGCCGCTCGAG - GFP Tag - GTTTAA



[View online »](#)

Protein Sequence: >RG203156 representing NM_003986
 Red=Cloning site Green=Tags(s)

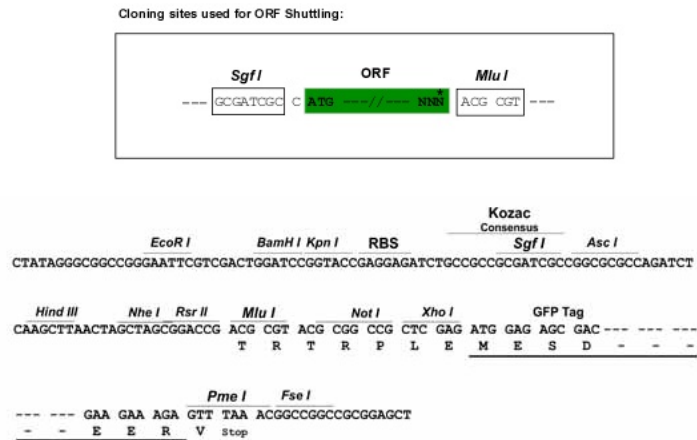
MACTIQKAEALDGAHLMQILWYDEEESLYPAVWLRDNCPCSDCYLDSAKARKLLVEALDVNIGIKGLIFD
 RKKVYITWPDEHYSEFQADWLKKRCFSKQARAKLQRELFPECCQYWGSELQLPTLDFEDVLRIDEHAYKW
 LSTLKKVGIIVRLTGASDKPGEVSKLGKRMGFLYLTFYGHWTQVQDKIDANNVAYTTGKLSFHTDYPALHH
 PPGVQLLHCIAKIQTVTGGDSEIVDGFNVQCQLKKNNPQAFQILSSTFVDFTDIGVDYCDFSVQSKHKIIEI
 DDKGQVVRINFNATRDITFDVPPERVQPFYAALKEFVDLMNSKESKFTFKMNPGDVITFDNWRLLHGRR
 SYEAGTEISRHLEGAYADWDVMSRLRILRQRVENGN

TRTRPLE - GFP Tag - V

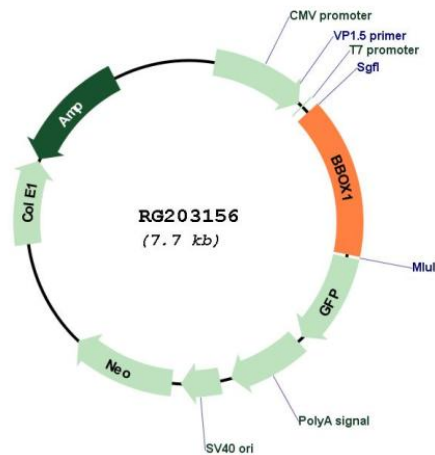
Restriction Sites:

Sgfl-MluI

Cloning Scheme:



Plasmid Map:



ACCN:

NM_003986

| | |
|-------------------------------|---|
| ORF Size: | 1161 bp |
| OTI Disclaimer: | The molecular sequence of this clone aligns with the gene accession number as a point of reference only. However, individual transcript sequences of the same gene can differ through naturally occurring variations (e.g. polymorphisms), each with its own valid existence. This clone is substantially in agreement with the reference, but a complete review of all prevailing variants is recommended prior to use. More info |
| OTI Annotation: | This clone was engineered to express the complete ORF with an expression tag. Expression varies depending on the nature of the gene. |
| Components: | The ORF clone is ion-exchange column purified and shipped in a 2D barcoded Matrix tube containing 10ug of transfection-ready, dried plasmid DNA (reconstitute with 100 ul of water). |
| Reconstitution Method: | <ol style="list-style-type: none">1. Centrifuge at 5,000xg for 5min.2. Carefully open the tube and add 100ul of sterile water to dissolve the DNA.3. Close the tube and incubate for 10 minutes at room temperature.4. Briefly vortex the tube and then do a quick spin (less than 5000xg) to concentrate the liquid at the bottom.5. Store the suspended plasmid at -20°C. The DNA is stable for at least one year from date of shipping when stored at -20°C. |
| RefSeq: | NM_003986.1 , NP_003977.1 |
| RefSeq Size: | 1901 bp |
| RefSeq ORF: | 1164 bp |
| Locus ID: | 8424 |
| UniProt ID: | O75936 |
| Cytogenetics: | 11p14.2 |
| Protein Pathways: | Lysine degradation |
| Gene Summary: | This gene encodes gamma butyrobetaine hydroxylase which catalyzes the formation of L-carnitine from gamma-butyrobetaine, the last step in the L-carnitine biosynthetic pathway. Carnitine is essential for the transport of activated fatty acids across the mitochondrial membrane during mitochondrial beta-oxidation. [provided by RefSeq, Jul 2008] |