

Product datasheet for **RG203140**

Lactoferrin (LTF) (NM_002343) Human Tagged ORF Clone

Product data:

Product Type:	Expression Plasmids
Product Name:	Lactoferrin (LTF) (NM_002343) Human Tagged ORF Clone
Tag:	TurboGFP
Symbol:	Lactoferrin
Synonyms:	GIG12; HEL110; HLF2; LF
Mammalian Cell Selection:	Neomycin
Vector:	pCMV6-AC-GFP (PS100010)
E. coli Selection:	Ampicillin (100 ug/mL)



[View online »](#)

ORF Nucleotide
Sequence:

>RG203140 representing NM_002343
Red=Cloning site Blue=ORF Green=Tags(s)

TTTTGTAATACGACTCACTATAGGGCGGCCGGAATTCGTCGACTGGATCCGGTACCGAGGAGATCTGCC
GCCGCGATCGCC

ATGAAACTTGCTTCCTCGTCTGCTGTTCTCGGGCCCTCGGACTGTGTCTGGCTGGCAGTAGGAGAA
GGAGTGTTCAGTGGTGCCTGATCCCAACCCGAGGCCACAAAATGCTTCCAATGGCAAAGGAATATGAG
AAAAGTGCCTGGCCCTCTGTGACGCTGCATAAAGAGAGACTCCCCATCCAGTGTATCCAGGCCATTGCG
GAAAACAGGGCCGATGCTGTGACCTTGTGGTGGTTTATATACGAGGCAGGCCGGCCCCCTACAAAAC
TGCGACCTGTAGCGGGGAAGTCTACGGGACCGAAAGACGCCACGAACTCACTATTATGCCGTGGCTGT
GGTGAAGAAGGGCGCAGCTTTCAGCTGAACGAACTGCAAGGTCTGAAGTCTGCCACACAGGCCTTCGC
AGGACCGCTGGATGGAATGTCCCTATAGGGACACTTCGTCATTCTTGAATTGGACGGTCCACCTGAGC
CCATTGAGGCAGCTGTGGCCAGGTTCTTCTCAGCCAGCTGTGTTCCCGGTCAGATAAAGGACAGTCCC
CAACCTGTGTCGCTGTGTCGGGGACAGGGGAAAACAAATGTGCCTTCTCCTCCAGGAACCGTACTTC
AGCTACTCTGGTGCCTTCAAGTGTCTGAGAGACGGGGCTGGAGACGTGGCTTTTATCAGAGAGAGCACAG
TGTTTGAGGACCTGTGACGAGGCTGAAAGGGACGAGTATGAGTTACTCTGCCACGACAACACTCGGAA
GCCAGTGGACAAGTTCAAAGACTGCCATCTGGCCCGGTCCTTCTCATGCCGTTGTGGCACGAAGTGTG
AATGGCAAGGAGGATGCCATCTGGAATCTTCTCCGCCAGGCACAGGAAAAGTTGGAAAGGACAAGTCCAC
CGAAATTCAGCTCTTTGGCTCCCTAGTGGGCAGAAAGATCTGCTGTTCAAGGACTCTGCCATTGGGTT
TTCGAGGGTGCCCCGAGGATAGATTCTGGGCTGTACCTGGCTCCGGCTACTTCACTGCCATCCAGAAC
TTGAGGAAAAGTGAGGAGGAAGTGGCTGCCCGGCTGCGCGGTCGTGTGGTGTGCGGTGGGCGAGCAGG
AGCTGCGCAAGTGAACCAAGTGGAGTGGCTTGGAGCAAGGCAGCGTGACCTGCTCCTCGGCCTCCACCAC
AGAGGACTGCATCGCCCTGGTGTCTGAAAGGAGAAGCTGATGCCATGAGTTTGGATGGAGGATATGTGTAC
ACTGCAGGCAAAATGTGGTTTGGTGCCTGTCTGGCAGAGAACTACAAATCCCAACAAAGCAGTGACCCTG
ATCCTAACTGTGTGGATAGACCTGTGGAAGGATATCTTACTGTGGCGGTGGTTAGGAGATCAGACACTAG
CCTTACCTGGAACCTGTGAAAGGCAAGAAGTCTGCCACACCGCCGTGGACAGGACTGCAGGCTGGAAT
ATCCCCATGGGCCTGCTCTTCAACCAGACGGGCTCCTGCAAAATTTGATGAATATTTCAAGTCAAAGCTGTG
CCCCTGGGTCTGACCCGAGATCTAATCTCTGTGCTCTGTGATTGGCGACGAGCAGGGTGAAGATAAGTG
CGAGCCCAACAGCAACGAGAGATACTACGGCTACACTGGGCTTTCGGTGCCTGGCTGAGAATGCTGGA
GACGTTGCATTTGTGAAAGATGTACTGTCTTGCAGAACTGATGGAAATAACAATGAGGCATGGGCTA
AGGATTTGAAGCTGGCAGACTTTGCGCTGCTGTGCCTCGATGGCAAACGGAAGCCTGTGACTGAGGCTAG
AAGCTGCCATCTTGCATGGCCCCGAATCATGCCGTGGTGTCTCGGATGGATAAGGTGGAACGCCTGAAA
CAGGTGCTGCTCCACCAACAGGCTAAATTTGGGAGAAATGGATCTGACTGCCCGGACAAGTTTTGCTTAT
TCCAGTCTGAAACCAAAAACCTTCTGTTCAATGACAACACTGAGTGTCTGGCCAGACTCCATGGCAAAAC
AACATATGAAAAATTTGGGGCCACAGTATGTCGCAGGCATTACTAATCTGAAAAAGTGTCAACCTCC
CCCCTCCTGGAAGCCTGTGAATTCCTCAGGAAG

ACGCGTACGCGGCCGCTCGAG - GFP Tag - GTTTAA

Protein Sequence: >RG203140 representing NM_002343
 Red=Cloning site Green=Tags(s)

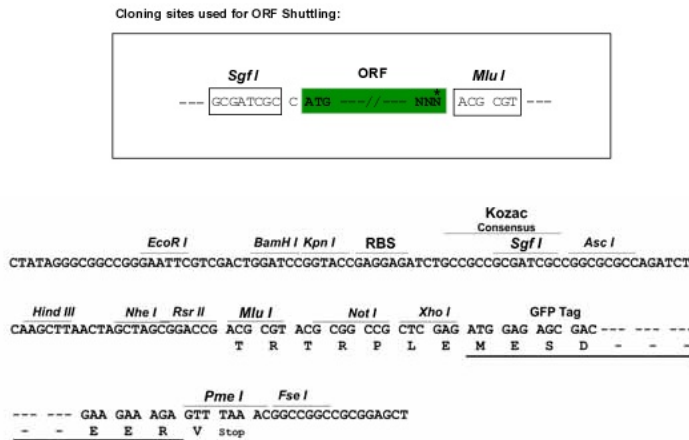
```

MKLVFLVLLFLGALGLCLAGSRRRSVQWCAVSQPEATKCFWQRNMRKVRGPPVSCIKRDSPIQCIQAI
ENRADAVTLDDGGFIYEAGLAPYKLRPVAAEVYGTQRPRTHYYAVAVVKKGGSFQLNELQGLKSCHTGLR
RTAGWNVPIGTLRPFLNWTGPPEPIEAAVARFFSASCVPADKGGQFPNLCRLCAGTGENKCAFSSQEPYF
SYSGAFKCLRDGAGDVAFIGESTVFEDLSDEAERDEYELLCPDNTRKPVDFKDCDLARVPSHAVVARSV
NGKEDAIWNLLRQAQEFKDKSPKQLFGSPSGQKDLLFKDSAIGFSRVPPRIDSGLYLGSGYFTAIQN
LRKSEEEVAARRARVVWCAVGEQELRKCNCQWSGLSEGSVTCSASTTEDICIALVLKGEADAMSLDGGYVY
TAGKCGLPVPLAENYKSSQSSDPDPCVDRPVEGYLTVAVVRRSDTSLTWNSVKGKKSCHTAVDRTAGWN
IPMGLLNFQTSCKFDEYFSQSCAPGSDPRSNLCALCIGDEQGENKCEPNSNERYGYTGAFRCLAENAG
DVAFVKDVTVLQNTDGNNEAWAKDLKADFALLCLDGKRKPVTEARSCHLAMAPNHAVSRMDKVERLK
QVLLHQQAKFGRNGSDCPDKFCLFQSETKNLLFNDNTECLARLHGKTTYEKYLGPOVYVAGITNLKKCSTS
PLLEACEFLRK
  
```

TRTRPLE - GFP Tag - V

Restriction Sites: SgfI-MluI

Cloning Scheme:



ACCN: NM_002343

ORF Size: 2133 bp

OTI Disclaimer: The molecular sequence of this clone aligns with the gene accession number as a point of reference only. However, individual transcript sequences of the same gene can differ through naturally occurring variations (e.g. polymorphisms), each with its own valid existence. This clone is substantially in agreement with the reference, but a complete review of all prevailing variants is recommended prior to use. [More info](#)

OTI Annotation: This clone was engineered to express the complete ORF with an expression tag. Expression varies depending on the nature of the gene.

Components: The ORF clone is ion-exchange column purified and shipped in a 2D barcoded Matrix tube containing 10ug of transfection-ready, dried plasmid DNA (reconstitute with 100 ul of water).

Reconstitution Method:

1. Centrifuge at 5,000xg for 5min.
2. Carefully open the tube and add 100ul of sterile water to dissolve the DNA.
3. Close the tube and incubate for 10 minutes at room temperature.
4. Briefly vortex the tube and then do a quick spin (less than 5000xg) to concentrate the liquid at the bottom.
5. Store the suspended plasmid at -20°C. The DNA is stable for at least one year from date of shipping when stored at -20°C.

RefSeq: [NM_002343.2](#), [NP_002334.2](#)

RefSeq Size: 2390 bp

RefSeq ORF: 2133 bp

Locus ID: 4057

UniProt ID: [P02788](#)

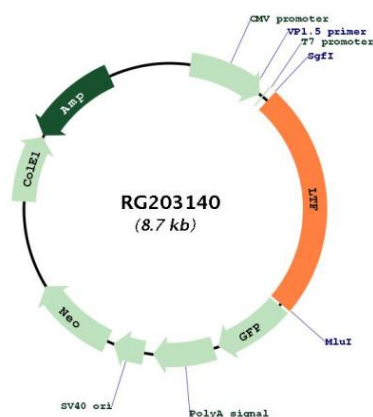
Cytogenetics: 3p21.31

Domains: TR_FER

Protein Families: Druggable Genome, Protease, Secreted Protein

Gene Summary: This gene is a member of the transferrin family of genes and its protein product is found in the secondary granules of neutrophils. The protein is a major iron-binding protein in milk and body secretions with an antimicrobial activity, making it an important component of the non-specific immune system. The protein demonstrates a broad spectrum of properties, including regulation of iron homeostasis, host defense against a broad range of microbial infections, anti-inflammatory activity, regulation of cellular growth and differentiation and protection against cancer development and metastasis. Antimicrobial, antiviral, antifungal and antiparasitic activity has been found for this protein and its peptides. Alternatively spliced transcript variants encoding different isoforms have been found for this gene. [provided by RefSeq, Sep 2014]

Product images:



Circular map for RG203140

