

Product datasheet for **RG203126**

VIP (NM_003381) Human Tagged ORF Clone

Product data:

Product Type: Expression Plasmids
Product Name: VIP (NM_003381) Human Tagged ORF Clone
Tag: TurboGFP
Symbol: VIP
Synonyms: PHM27
Mammalian Cell Selection: Neomycin
Vector: pCMV6-AC-GFP (PS100010)
E. coli Selection: Ampicillin (100 ug/mL)
ORF Nucleotide Sequence: >RG203126 representing NM_003381
 Red=Cloning site Blue=ORF Green=Tags(s)

TTTTGTAATACGACTCACTATAGGGCGGCCGGAATTCGTCGACTGGATCCGGTACCGAGGAGATCTGCC
 GCC**CGATCGCC**

ATGGACACCAGAAATAAGGCCAGCTCCTTGTGCTCCTGACTCTTCTCAGTGTGCTCTTCTCACAGACTT
 CGGCATGGCCTTTACAGGGCACCTTCTGCTCTCAGGTTGGGTGACAGAATACCCTTTGAGGGAGCAA
 TGAACCTGATCAAGTTTCATTAAGAAGACATTGACATGTTGCAAATGCATTAGCTGAAATGACACA
 CCCTATTATGATGTATCCAGAAATGCCAGGCATGCTGATGGAGTTTTACCAGTGACTTCAGTAACTCT
 TGGGTCAACTTTCTGCCAAAAGTACCTTGAGTCTTTATGGGAAACGTGTTAGTAACATCTCAGAAGA
 CCTGTACCAGTCAAACGTCAGTCACTGAGTCTTCACTGACAACTATACCCGCCTTAGAAAACAAATG
 GCTGTAAGAAATATTTGAACTCAATTCTGAATGGAAAGAGGAGCAGTGAGGGAGAATCTCCCGACTTTC
 CAGAAGAGTTAGAAAA

ACGCGTACGCGGCCGCTCGAG - GFP Tag - GTTTAA

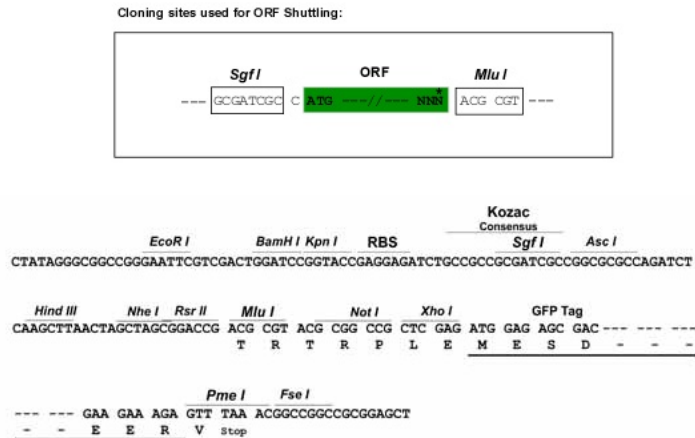
Protein Sequence: >RG203126 representing NM_003381
 Red=Cloning site Green=Tags(s)

MDTRNKAQLLVLLTLLSVLFSQTSAPWLYRAPSALRLGDRIPFEGANEPDQVSLKEDIDMLQNALAENDT
 PYYDVSRNARHADGVFTSDFSKLLGQLSAKKYLESLMGKRVSNI SEDPVPVKRHSDAVFTDNYTRLRQKM
 AVKKYLNSILNGKRSSEGESPDFPEELEK

TRTRPLE - GFP Tag - V

Restriction Sites: Sgfl-MluI



Cloning Scheme:


ACCN: NM_003381

ORF Size: 507 bp

OTI Disclaimer: The molecular sequence of this clone aligns with the gene accession number as a point of reference only. However, individual transcript sequences of the same gene can differ through naturally occurring variations (e.g. polymorphisms), each with its own valid existence. This clone is substantially in agreement with the reference, but a complete review of all prevailing variants is recommended prior to use. [More info](#)

OTI Annotation: This clone was engineered to express the complete ORF with an expression tag. Expression varies depending on the nature of the gene.

Components: The ORF clone is ion-exchange column purified and shipped in a 2D barcoded Matrix tube containing 10ug of transfection-ready, dried plasmid DNA (reconstitute with 100 ul of water).

- Reconstitution Method:**
1. Centrifuge at 5,000xg for 5min.
 2. Carefully open the tube and add 100ul of sterile water to dissolve the DNA.
 3. Close the tube and incubate for 10 minutes at room temperature.
 4. Briefly vortex the tube and then do a quick spin (less than 5000xg) to concentrate the liquid at the bottom.
 5. Store the suspended plasmid at -20°C. The DNA is stable for at least one year from date of shipping when stored at -20°C.

RefSeq: [NM_003381.2](#), [NP_003372.1](#)

RefSeq Size: 1618 bp

RefSeq ORF: 513 bp

Locus ID: 7432

UniProt ID: [P01282](#)

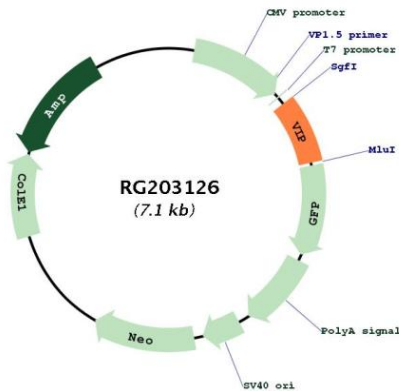
Cytogenetics: 6q25.2

Domains: GLUCA

Protein Families: Druggable Genome, Secreted Protein, Transmembrane

Gene Summary: The protein encoded by this gene belongs to the glucagon family. It stimulates myocardial contractility, causes vasodilation, increases glycogenolysis, lowers arterial blood pressure and relaxes the smooth muscle of trachea, stomach and gall bladder. The protein also acts as an antimicrobial peptide with antibacterial and antifungal activity. Alternative splicing occurs at this locus and two transcript variants encoding distinct isoforms have been identified. [provided by RefSeq, Nov 2014]

Product images:



Circular map for RG203126