

Product datasheet for **RG203105**

TSPAN31 (NM_005981) Human Tagged ORF Clone

Product data:

Product Type: Expression Plasmids
Product Name: TSPAN31 (NM_005981) Human Tagged ORF Clone
Tag: TurboGFP
Symbol: TSPAN31
Synonyms: SAS
Mammalian Cell Selection: Neomycin
Vector: pCMV6-AC-GFP (PS100010)
E. coli Selection: Ampicillin (100 ug/mL)
ORF Nucleotide Sequence: >RG203105 representing NM_005981
Red=Cloning site Blue=ORF Green=Tags(s)

TTTTGTAACTACGACTCACTATAGGGCGGCCGGAATTCGTCGACTGGATCCGGTACCGAGGAGATCTGCC
 GCCCGCATCGCC

ATGGTTTGTGGCGGCTTTGCCTGCTCCAAGAATGCGCTTTGCGCTCTCAACGTGGTCTACATGCTGGTGA
GCTTGTGCTCATTGGAGTGGCTGCTTGGGGCAAGGGCCTGGGTCTGGTGTCCAGCATCCACATCATCGG
CGGAGTCATTGCTGTGGGAGTCTTCCTTCTCCTTATTGCAGTGGCTGGACTGGTGGGTGCTGTCAACCAC
CACCAAGTCCTGCTGTTCTTTACATGATCATCCTTGGTTTGGTCTTCATCTTCAATTTGTAATCTCTT
GCTCATGTCTGGCTATTAACCGAAGCAAACAGACAGATGTCATCAATGCTTCTTGGTGGGTGATGAGCAA
CAAGACTCGGGATGAAGTGGAAAGAAGTTTGGATTGTTGGCTTATTCAACCTCACAACCTGTATCAA
CAAGATTATGATTCTGCACTGCAATCTGCAAGAGCCAGAGCCCCACATGCCAGATGTGTGGAGAAAAGT
TTCTTAAGCATTACAGACGAAGCCCTGAAAATCCTAGGGGGTGTGGACTCTTCTTTAGCTTTACAGAGAT
CCTTGGTGTGGCTAGCAATGAGATTTTGGGAATCAGAAGGATCCTAGAGCCAACCCAGTGCCTTTCTA

ACGCGTACGCGGCCGCTCGAG - GFP Tag - GTTTAA

Protein Sequence: >RG203105 representing NM_005981
Red=Cloning site Green=Tags(s)

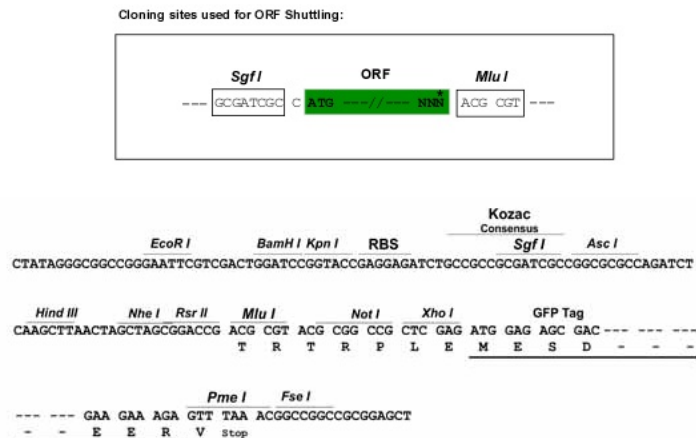
MVCGGFACSKNALCALNVVYMLVSLLLIGVAWGKGLGLVSSIIHIGGVIAVGVFLLLIAYAGLVGAVNH
 HQVLLFFYMIILGLVFIQFVISCCLAINRSKQTDVINASWVMSNKTRELFERSFDCCGLFNL TTYLQ
 QDYDFCTAICKSQSPTCQMCGEKFLKHSDEALKILGGVGLFFSFTEILGVWLMRFRNQKDPNPASFL

TRTRPLE - GFP Tag - V

Restriction Sites: SgfI-MluI



View online »

Cloning Scheme:


ACCN: NM_005981

ORF Size: 630 bp

OTI Disclaimer: The molecular sequence of this clone aligns with the gene accession number as a point of reference only. However, individual transcript sequences of the same gene can differ through naturally occurring variations (e.g. polymorphisms), each with its own valid existence. This clone is substantially in agreement with the reference, but a complete review of all prevailing variants is recommended prior to use. [More info](#)

OTI Annotation: This clone was engineered to express the complete ORF with an expression tag. Expression varies depending on the nature of the gene.

Components: The ORF clone is ion-exchange column purified and shipped in a 2D barcoded Matrix tube containing 10ug of transfection-ready, dried plasmid DNA (reconstitute with 100 ul of water).

Reconstitution Method:

1. Centrifuge at 5,000xg for 5min.
2. Carefully open the tube and add 100ul of sterile water to dissolve the DNA.
3. Close the tube and incubate for 10 minutes at room temperature.
4. Briefly vortex the tube and then do a quick spin (less than 5000xg) to concentrate the liquid at the bottom.
5. Store the suspended plasmid at -20°C. The DNA is stable for at least one year from date of shipping when stored at -20°C.

Note: Plasmids are not sterile. For experiments where strict sterility is required, filtration with 0.22um filter is required.

RefSeq: [NM_005981.5](#)

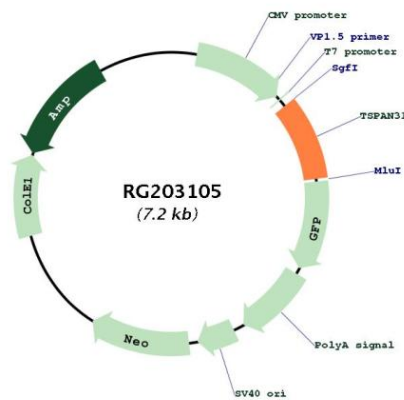
RefSeq Size: 1749 bp

RefSeq ORF: 633 bp

Locus ID: 6302

UniProt ID:	<u>Q12999</u>
Cytogenetics:	12q14.1
Domains:	transmembrane4
Protein Families:	Druggable Genome, Transmembrane
Gene Summary:	The protein encoded by this gene is a member of the transmembrane 4 superfamily, also known as the tetraspanin family. Most of these members are cell-surface proteins that are characterized by the presence of four hydrophobic domains. The proteins mediate signal transduction events that play a role in the regulation of cell development, activation, growth and motility. This encoded protein is thought to be involved in growth-related cellular processes. This gene is associated with tumorigenesis and osteosarcoma. [provided by RefSeq, Jul 2008]

Product images:



Circular map for RG203105